

MATERIALS PACK ...

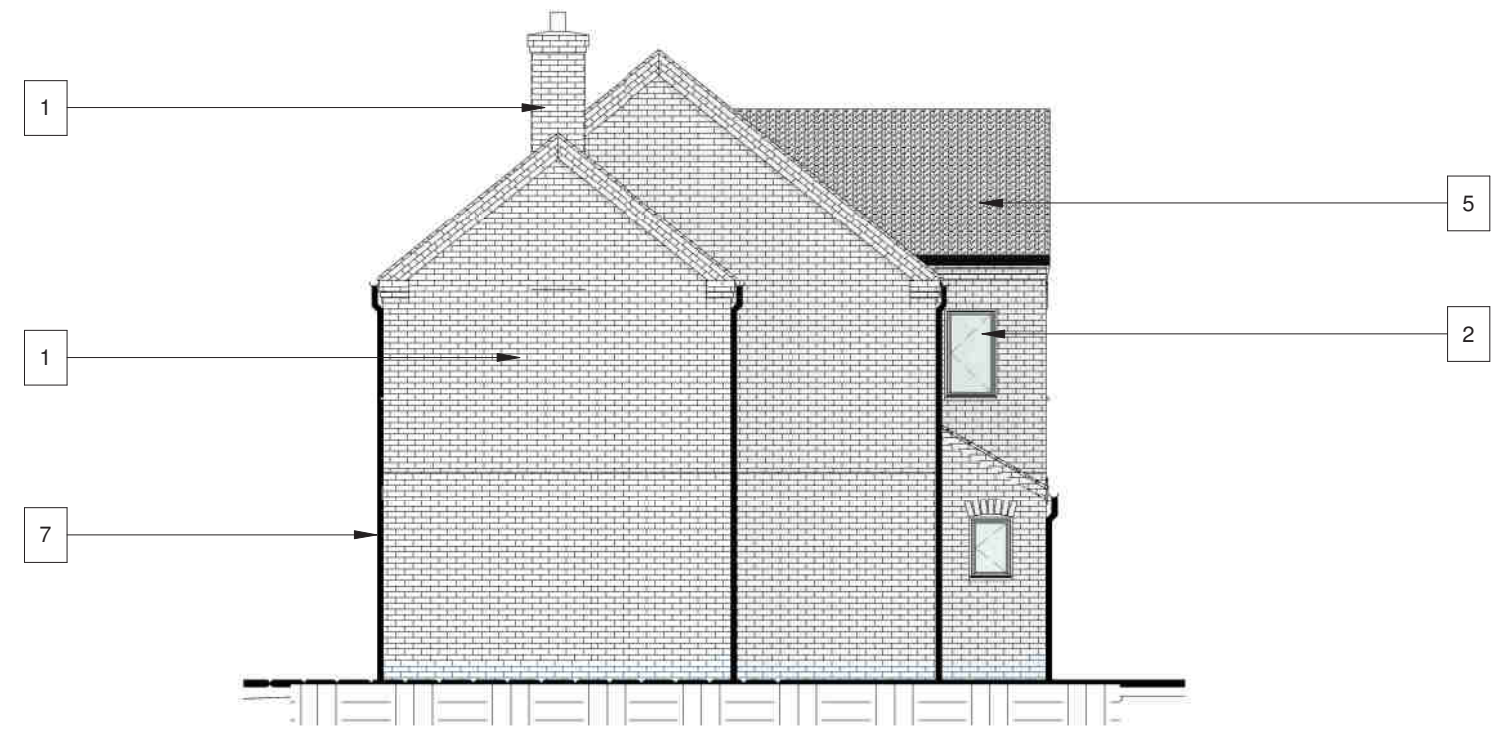
PLANNING CONDITION N°2 (REF: APP/A3010/A/04/1166956)

EAST DRAYTON, NOTTINGHAMSHIRE, DN22 0LN

**Materials Pack, House 1, Front Elevation**  
1 : 100



**Materials Pack, House 1, Elevation A**  
1 : 100



KEY

1	Facing Bricks
2	Windows
3.1	Composite Door
3.2	Sliding Door
5	Roof Tiles
6	Roof light
7	Rainwater Goods
8	Verges

Do not scale from drawing. AM2 Ltd accept no responsibility for any dimensions obtained by measuring or scaling from this drawing and no reliance should be placed on such dimensions. If no dimension is given, it is the responsibility of the recipient to obtain the dimension specifically from the author or by site measurement. The sizing of all structural and service elements must always be checked against the relevant engineer's drawings. No reliance should be placed upon sizing information shown on this drawing.

### Materials Pack, Rear Elevation

1 : 100



### Materials Pack, Elevation B

1 : 100



**KEY**

1	Facing Bricks
2	Windows
3.1	Composite Door
3.2	Sliding Door
5	Roof Tiles
6	Roof light
7	Rainwater Goods
8	Verges

Do not scale from drawing. AM2 Ltd accept no responsibility for any dimensions obtained by measuring or scaling from this drawing and no reliance should be placed on such dimensions. If no dimension is given, it is the responsibility of the recipient to obtain the dimension specifically from the author or by site measurement. The sizing of all structural and service elements must always be checked against the relevant engineer's drawings. No reliance should be placed upon sizing information shown on this drawing.

**House 2, Elevation A**  
1 : 100

**House 2, Elevation B**  
1 : 100



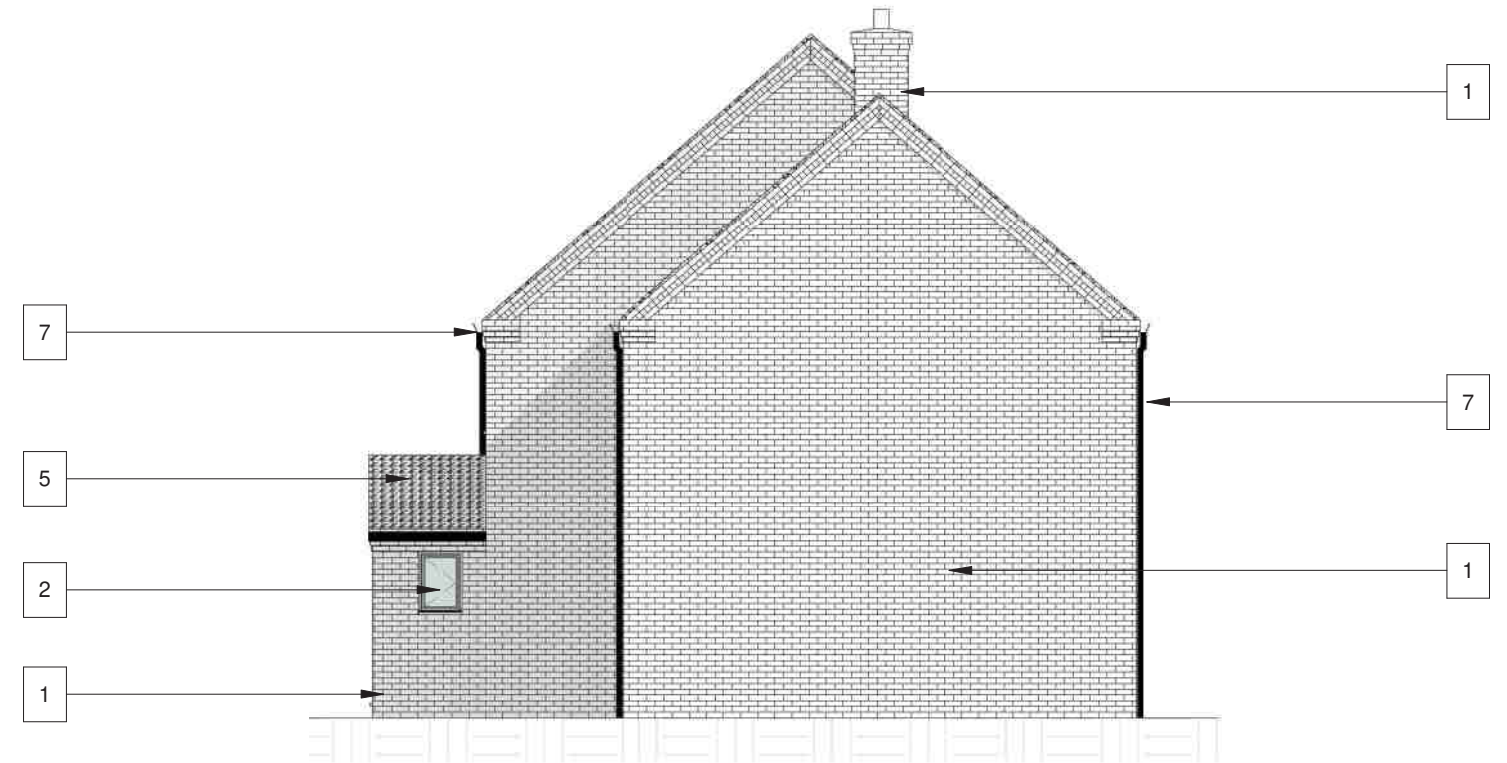
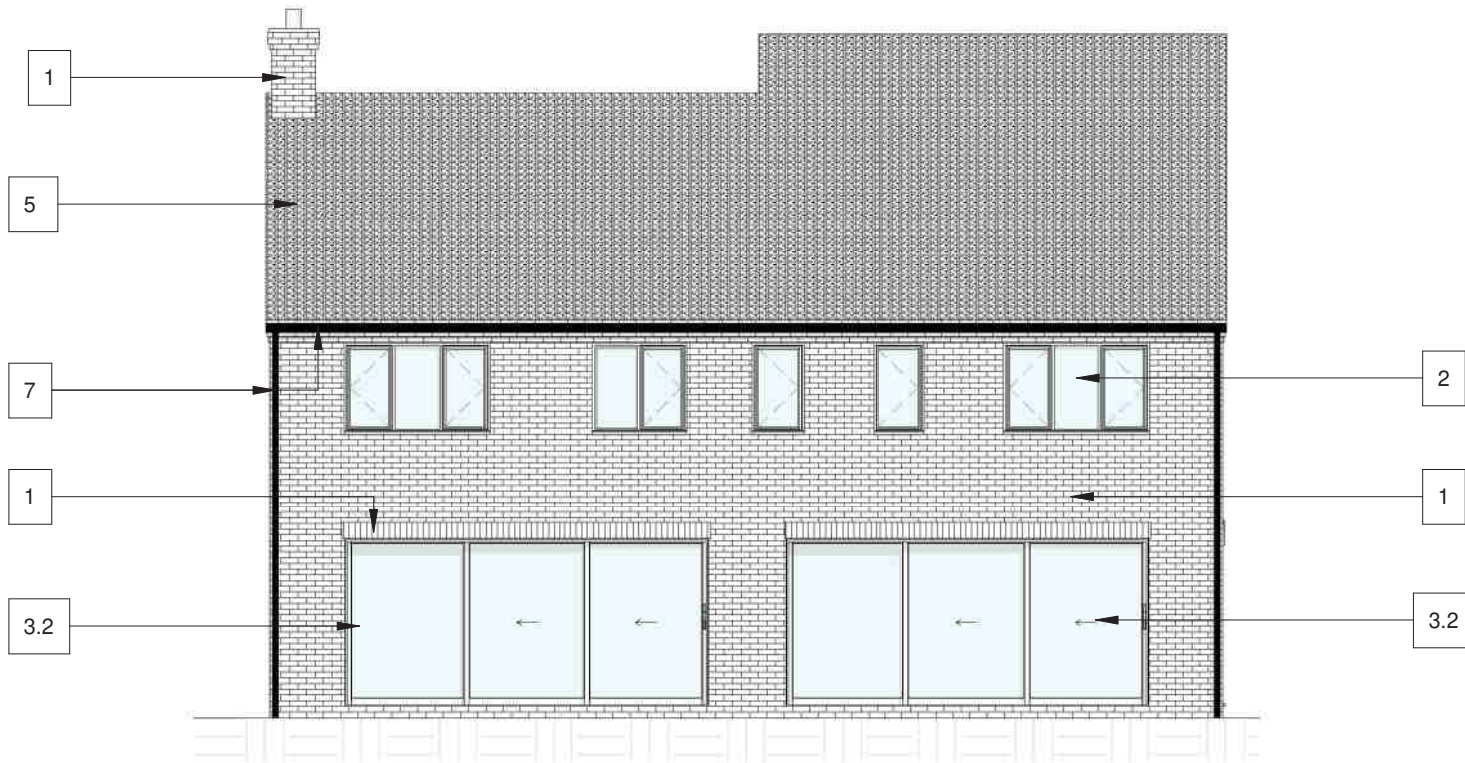
**KEY**

1	Facing Bricks
2	Windows
3.1	Composite Door
3.2	Sliding Door
5	Roof Tiles
6	Roof light
7	Rainwater Goods
8	Verges

Do not scale from drawing. AM2 Ltd accept no responsibility for any dimensions obtained by measuring or scaling from this drawing and no reliance should be placed on such dimensions. If no dimension is given, it is the responsibility of the recipient to obtain the dimension specifically from the author or by site measurement. The sizing of all structural and service elements must always be checked against the relevant engineer's drawings. No reliance should be placed upon sizing information shown on this drawing.

**House 2, Elevation C**  
1 : 100

**House 2, Elevation D**  
1 : 100



KEY

1	Facing Bricks
2	Windows
3.1	Composite Door
3.2	Sliding Door
5	Roof Tiles
6	Roof light
7	Rainwater Goods
8	Verges

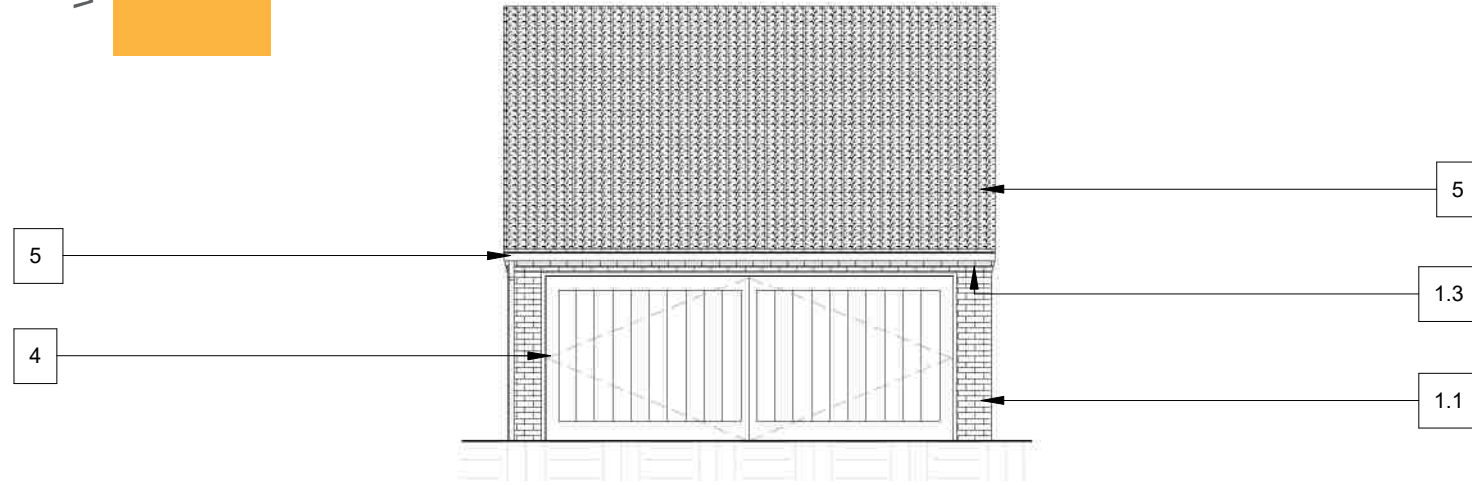
Do not scale from drawing. AM2 Ltd accept no responsibility for any dimensions obtained by measuring or scaling from this drawing and no reliance should be placed on such dimensions. If no dimension is given, it is the responsibility of the recipient to obtain the dimension specifically from the author or by site measurement. The sizing of all structural and service elements must always be checked against the relevant engineer's drawings. No reliance should be placed upon sizing information shown on this drawing.

PROPOSED NORTH & SOUTH ELEVATIONS

GARAGE

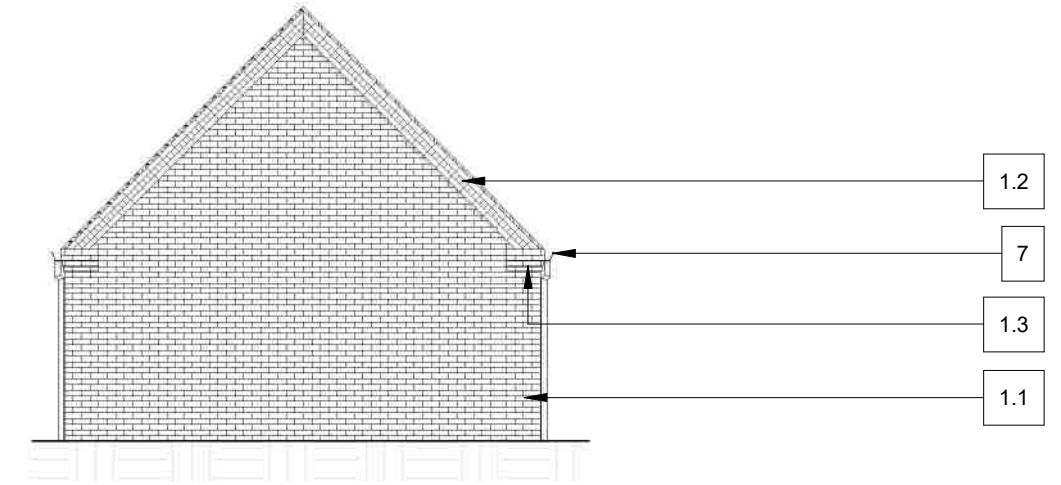
House 2 Garage, Elevation A

1 : 100



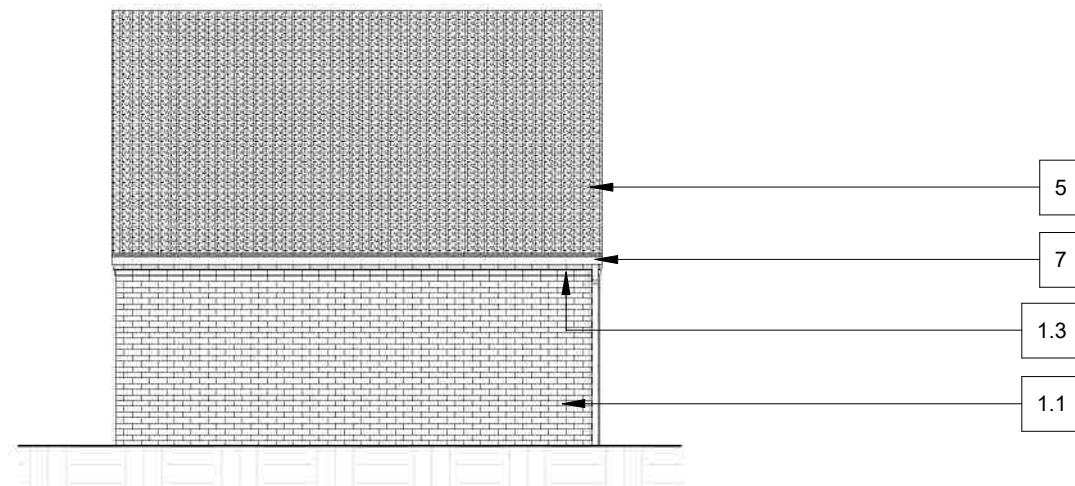
House 2 Garage, Elevation B

1 : 100



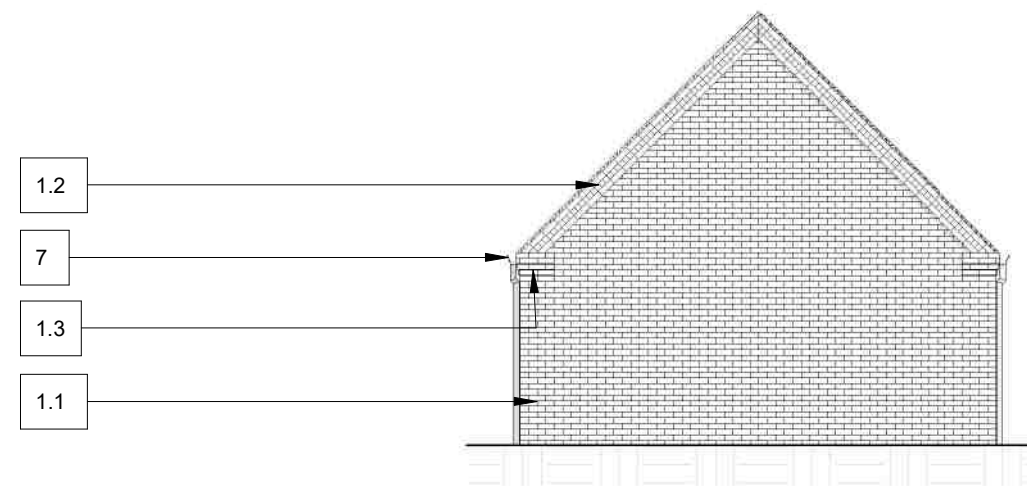
House 2 Garage, Elevation C

1 : 100



House 2 Garage, Elevation D

1 : 100



KEY

1	Facing Bricks	5	Roof Tiles
1.2	Feature Bricks	7	Rainwater Goods
4	Garage Door	8	Verge

Do not scale from drawing. AM2 Ltd accept no responsibility for any dimensions obtained by measuring or scaling from this drawing and no reliance should be placed on such dimensions. If no dimension is given, it is the responsibility of the recipient to obtain the dimension specifically from the author or by site measurement. The sizing of all structural and service elements must always be checked against the relevant engineer's drawings. No reliance should be placed upon sizing information shown on this drawing.

### House 03, Elevation A

1 : 100



### House 03, Elevation B

1 : 100



**KEY**

1	Facing Bricks	5	Roof Tiles
2	UPVC Windows	6	Roof windows
3.1	Composite single Door	7	Rainwater Goods
3.2	Composite sliding Door	8	Verges

Do not scale from drawing. AM2 Ltd accept no responsibility for any dimensions obtained by measuring or scaling from this drawing and no reliance should be placed on such dimensions. If no dimension is given, it is the responsibility of the recipient to obtain the dimension specifically from the author or by site measurement. The sizing of all structural and service elements must always be checked against the relevant engineer's drawings. No reliance should be placed upon sizing information shown on this drawing.

### House 03, Elevation C

1 : 100



### House 03, Elevation D

1 : 100



**KEY**

1	Facing Bricks	5	Roof Tiles
2	UPVC Windows	6	Roof windows
3.1	Composite single Door	7	Rainwater Goods
3.2	Composite sliding Door	8	Verges

Do not scale from drawing. AM2 Ltd accept no responsibility for any dimensions obtained by measuring or scaling from this drawing and no reliance should be placed on such dimensions. If no dimension is given, it is the responsibility of the recipient to obtain the dimension specifically from the author or by site measurement. The sizing of all structural and service elements must always be checked against the relevant engineer's drawings. No reliance should be placed upon sizing information shown on this drawing.



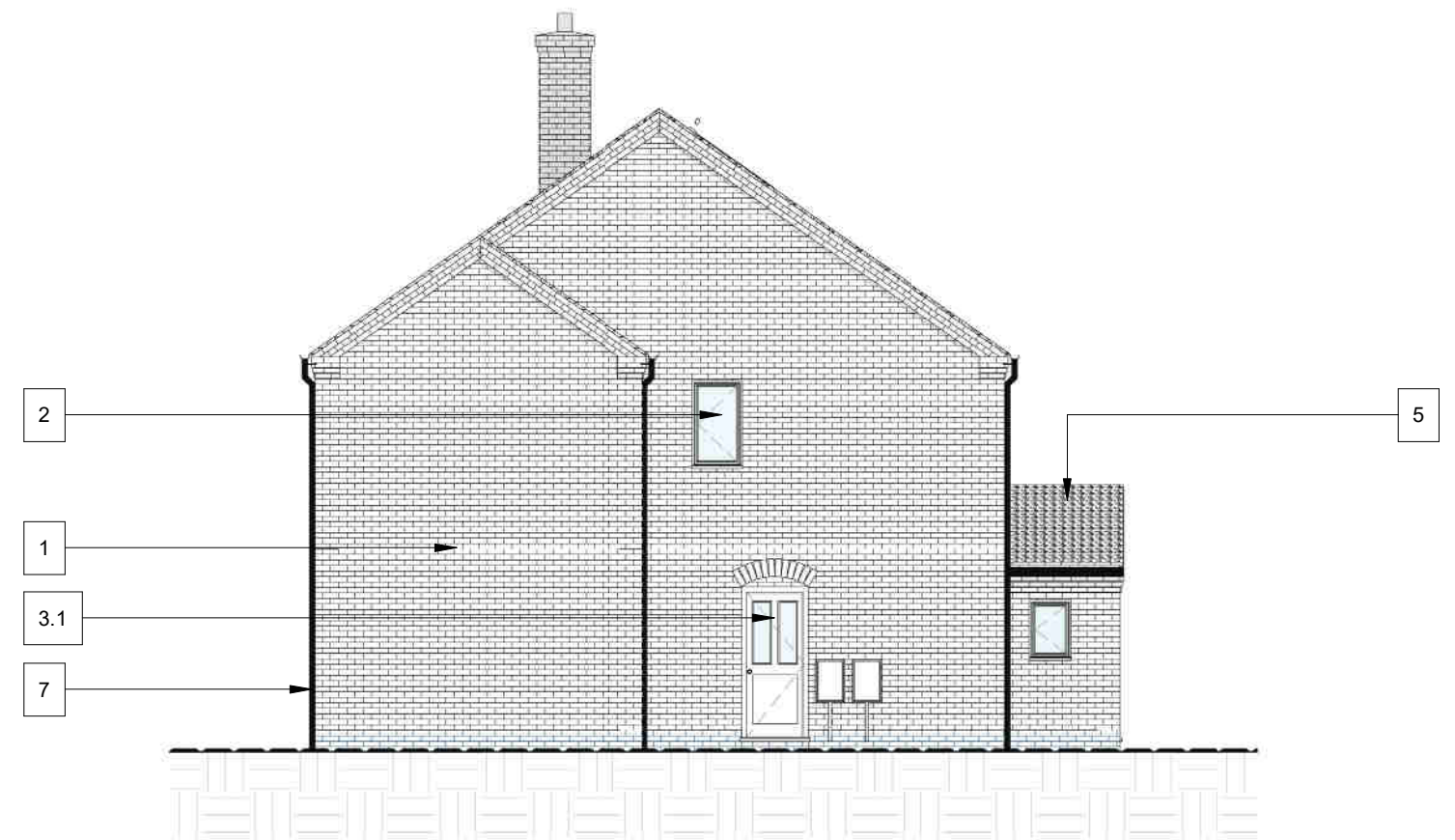
### House 04, Elevation A

1 : 100



### House 04, Elevation B

1 : 100



**KEY**

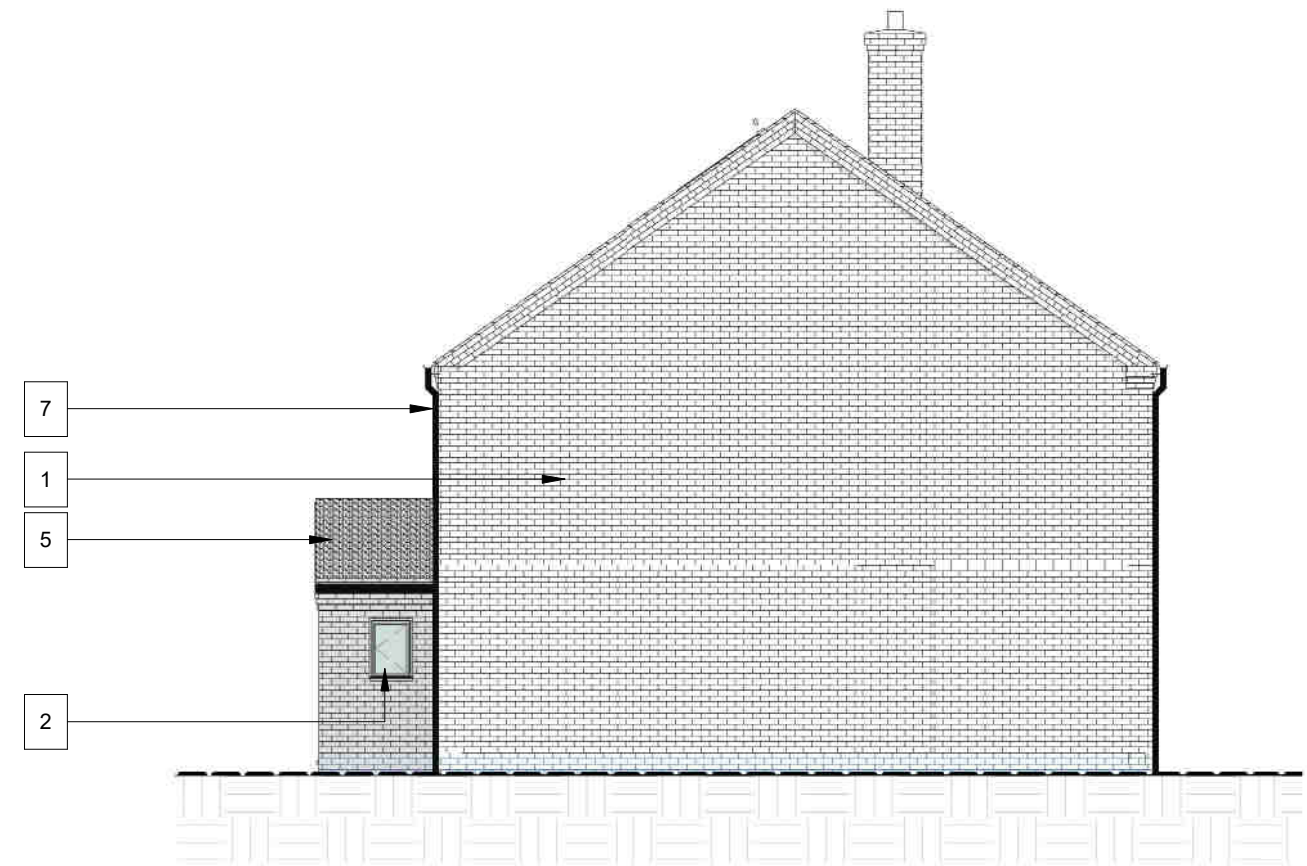
1	Facing Bricks	5	Roof Tiles
2	UPVC Windows	6	Roof windows
3.1	Composite single Door	7	Rainwater Goods
3.2	Composite sliding Door	8	Verges

Do not scale from drawing. AM2 Ltd accept no responsibility for any dimensions obtained by measuring or scaling from this drawing and no reliance should be placed on such dimensions. If no dimension is given, it is the responsibility of the recipient to obtain the dimension specifically from the author or by site measurement. The sizing of all structural and service elements must always be checked against the relevant engineer's drawings. No reliance should be placed upon sizing information shown on this drawing.

**House 04, Elevation C**  
1 : 100



**House 04, Elevation D**  
1 : 100



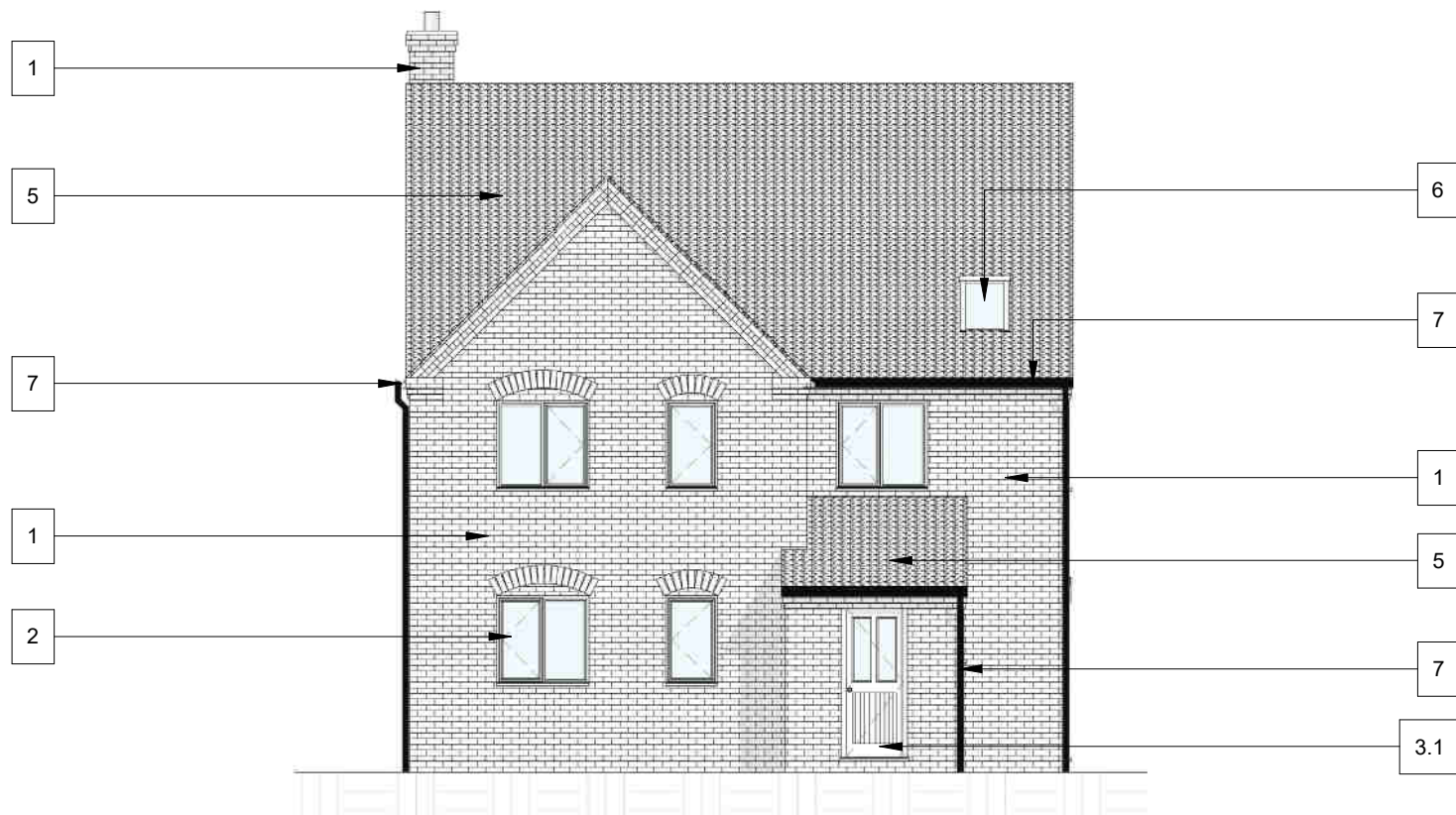
KEY

1	Facing Bricks	5	Roof Tiles
2	UPVC Windows	6	Roof windows
3.1	Composite single Door	7	Rainwater Goods
3.2	Composite sliding Door	8	Verges

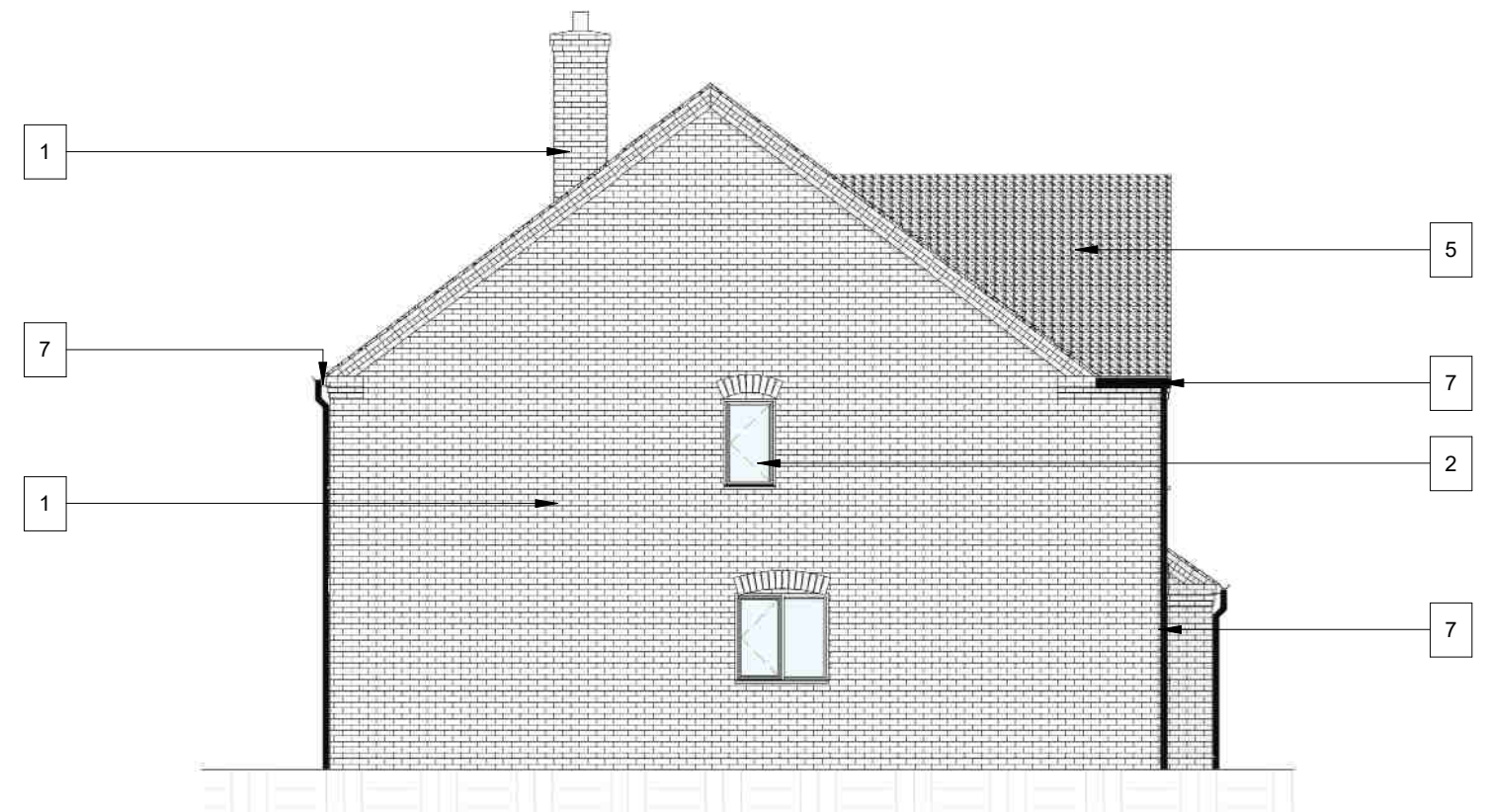
Do not scale from drawing. AM2 Ltd accept no responsibility for any dimensions obtained by measuring or scaling from this drawing and no reliance should be placed on such dimensions. If no dimension is given, it is the responsibility of the recipient to obtain the dimension specifically from the author or by site measurement. The sizing of all structural and service elements must always be checked against the relevant engineer's drawings. No reliance should be placed upon sizing information shown on this drawing.

PROPOSED NORTH & SOUTH ELEVATIONS  
HOUSE 05

**House 05, Elevation A**  
1 : 100



**House 05, Elevation B**  
1 : 100



KEY

1	Facing Bricks
2	UPVC Windows
3	Door
5	Roof Tiles
7	Rainwater Goods
8	Verges

Do not scale from drawing. AM2 Ltd accept no responsibility for any dimensions obtained by measuring or scaling from this drawing and no reliance should be placed on such dimensions. If no dimension is given, it is the responsibility of the recipient to obtain the dimension specifically from the author or by site measurement. The sizing of all structural and service elements must always be checked against the relevant engineer's drawings. No reliance should be placed upon sizing information shown on this drawing.

# PROPOSED NORTH & SOUTH ELEVATIONS HOUSE 05

## House 05, Elevation C 1 : 100



## House 05, Elevation D 1 : 100



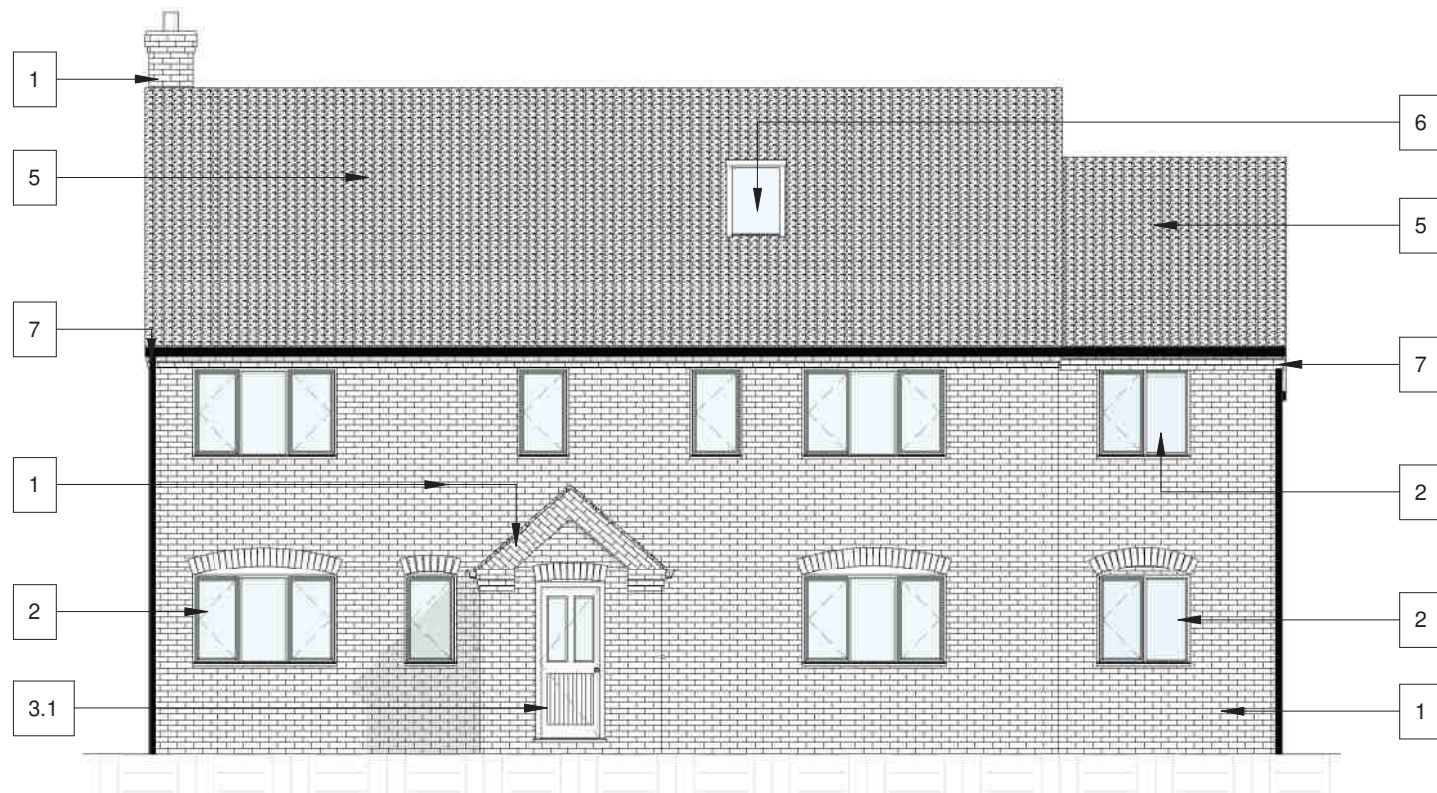
**KEY**

1	Facing Bricks
2	UPVC Windows
3	Door
5	Roof Tiles
7	Rainwater Goods
8	Verges

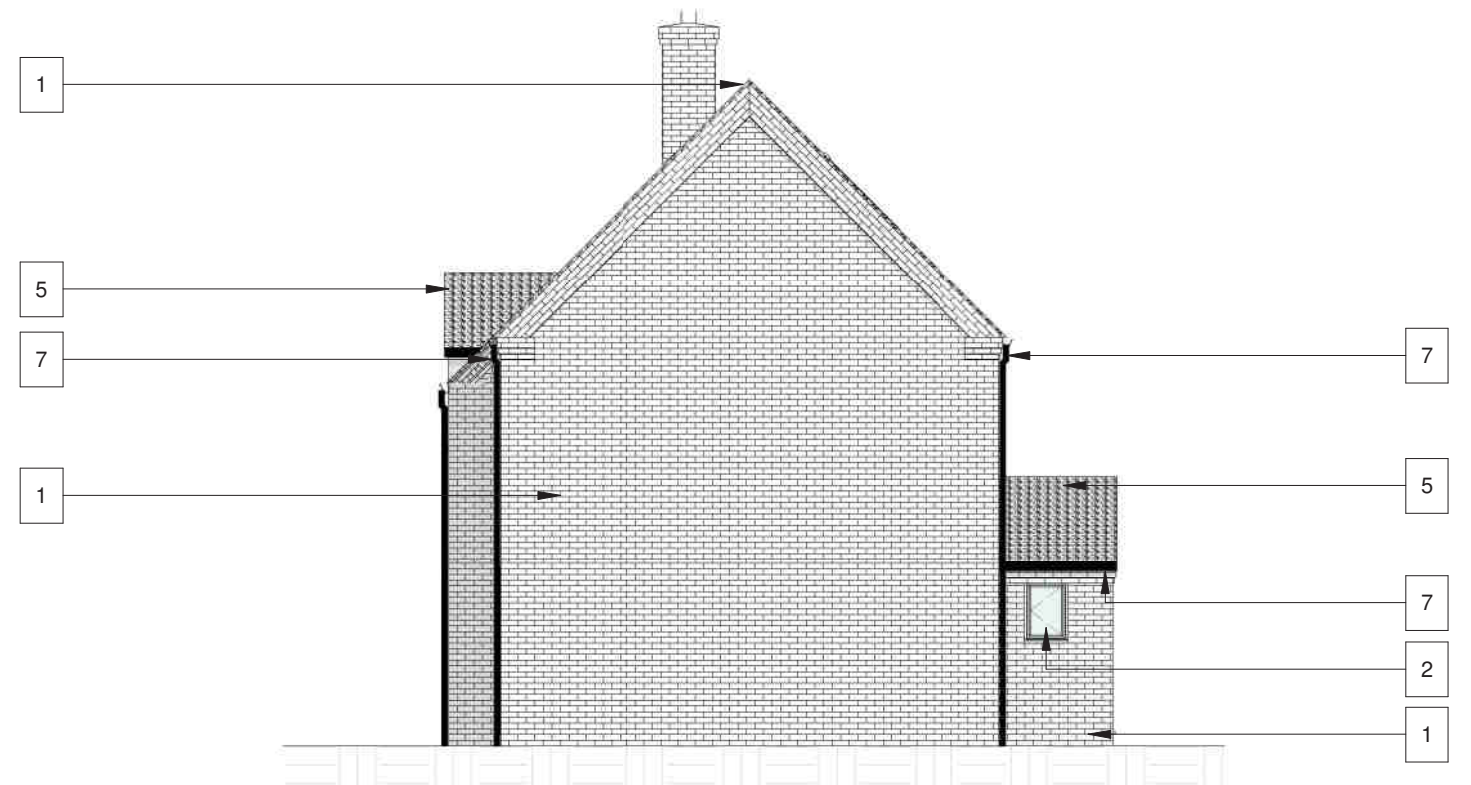
Do not scale from drawing. AM2 Ltd accept no responsibility for any dimensions obtained by measuring or scaling from this drawing and no reliance should be placed on such dimensions. If no dimension is given, it is the responsibility of the recipient to obtain the dimension specifically from the author or by site measurement. The sizing of all structural and service elements must always be checked against the relevant engineer's drawings. No reliance should be placed upon sizing information shown on this drawing.

PROPOSED NORTH & SOUTH ELEVATIONS  
HOUSE 06

**House 6, Elevation A**  
1 : 100



**House 6, Elevation B**  
1 : 100



KEY

1	Facing Bricks
2	Windows
3.1	Composite Door
3.2	Sliding Door
5	Roof Tiles
6	Roof light
7	Rainwater Goods
8	Verges

Do not scale from drawing. AM2 Ltd accept no responsibility for any dimensions obtained by measuring or scaling from this drawing and no reliance should be placed on such dimensions. If no dimension is given, it is the responsibility of the recipient to obtain the dimension specifically from the author or by site measurement. The sizing of all structural and service elements must always be checked against the relevant engineer's drawings. No reliance should be placed upon sizing information shown on this drawing.

### House 6, Elevation C

1 : 100



### House 6, Elevation D

1 : 100



**KEY**

1	Facing Bricks
2	Windows
3.1	Composite Door
3.2	Sliding Door
5	Roof Tiles
6	Roof light
7	Rainwater Goods
8	Verges

Do not scale from drawing. AM2 Ltd accept no responsibility for any dimensions obtained by measuring or scaling from this drawing and no reliance should be placed on such dimensions. If no dimension is given, it is the responsibility of the recipient to obtain the dimension specifically from the author or by site measurement. The sizing of all structural and service elements must always be checked against the relevant engineer's drawings. No reliance should be placed upon sizing information shown on this drawing.

# PROPOSED MATERIAL SPECIFICATIONS

## LEGEND

### 1. BRICKS

- Company: RGB Bricks and Stone Cladding
- Material: Facing bricks
- Type: Birkdale Blend
- Colour: Red
- Size: 65x102.5 mm
- \*Note: Bricks to have flush joint (Stretcher bond). Mortar type TBC

### 2. WINDOWS

- Company: Evolution or similar
- Material: UPVC (mock timber effect)
- Colour: Cream

### 3. DOORS

- TYPE 1:
- Company: Evolution or similar
  - Material: Composite (mock timber effect)
  - Colour: Cream
- TYPE 2:
- Company: Eximia
  - Material: UPVC (mock timber effect)
  - Colour: Cream
  - Type: Sliding Doors

### 4. GARAGE DOORS

- Company: Evolution or similar
- Material: Composite (mock timber effect)
- Colour: Cream

### 5. ROOF TILES

- Company: TBC
- Material: Natural Clay pantile
- Colour: Sandtoft Old english natural red
- \*Note: Non interlocking variety

### 6. ROOF LIGHTS

- Company: VELUX or similar
- Material: Aluminium
- Colour: TBC
- \*Note: Rooflights to be conservation style

### 7. RAINWATER GOODS

- Company: Brett Martin
- Material: UPVC cast iron look, half round rise and fall gutter and round pipe
- Colour: Black
- \*Note: Please, refer to Pre-Commencement Condition Details Pack for further information

### 8. VERGES

- Material: Mortar bedded verges

\* IMAGES INDICATIVE ONLY

1.1



1.2



2



4



5



6



7

