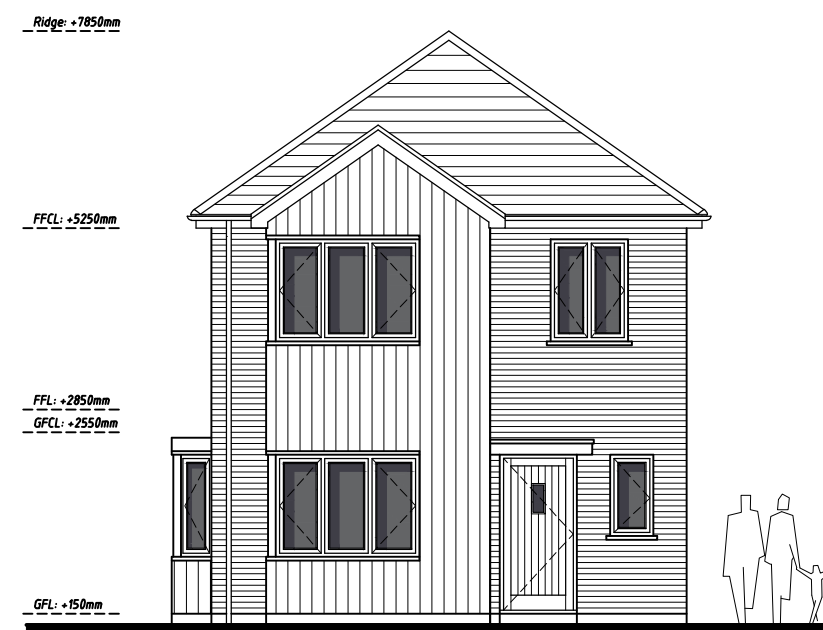


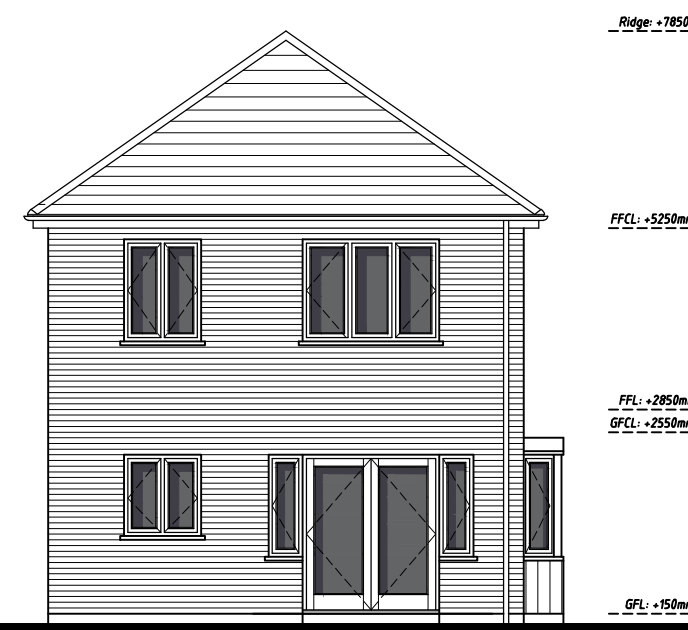
### Ground Floor Plan

Per Plot Approx. GIA - 49.0sqm (527sqft)



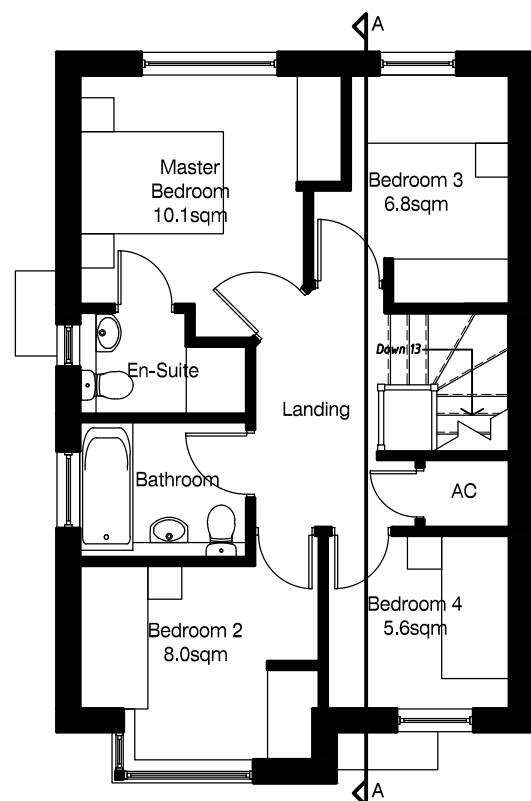
### Front Elevation

Scale 1:100



### Rear Elevation

Scale 1:100

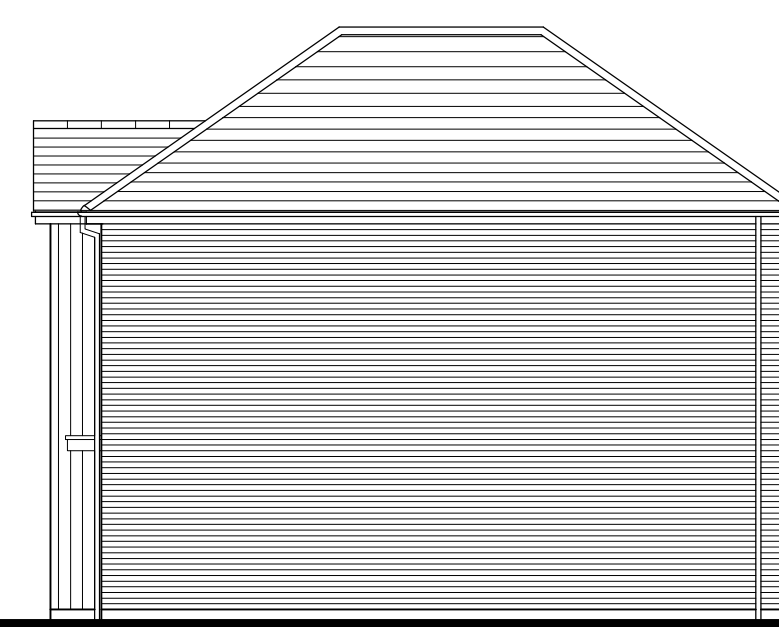


### First Floor Plan

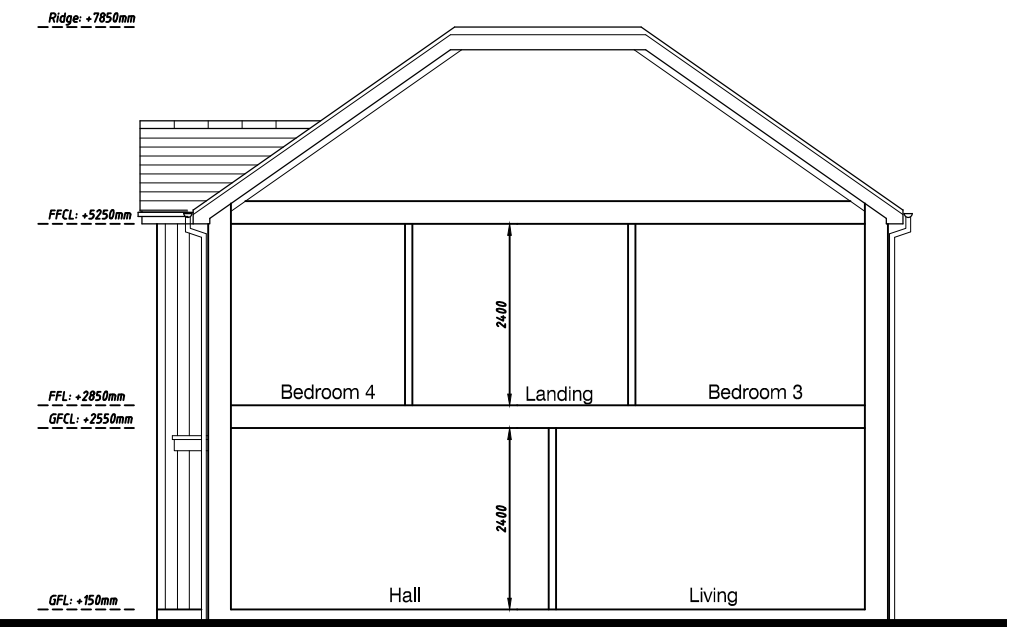
Per Plot Approx. GIA - 49.0sqm (527sqft)



### Side Elevation



### Side Elevation



### Section AA

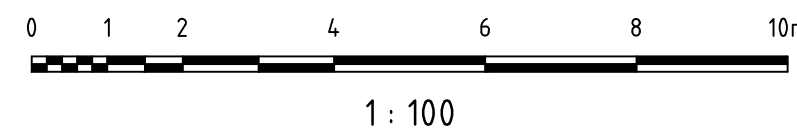
Plots - 3,6

Per Plot: 4B5P

GF Approx. GIA - 49.0sqm (527sqft)

FF Approx. GIA - 49.0sqm (527sqft)

Total Approx. GIA - 98.0sqm (1,054sqft)



B 03.12.20 Updated side bay window to urban design comments  
 A 22.10.20 Updated rear patio doors

JH  
 JH

rev.	date	drawn	chk'd

**Gould Singleton Architects** Tel: 0121 550 0359 Fax: 0121 550 800  
 Earls Way, Halesowen, West Midlands, B63 3HR e-mail: info@gould-singleton.co.uk

scales 1:100@A2  
 date 08.10.19  
 drawn JH checked GSA  
 Plans & Elevations - Plots 3 & 6 - Unit C/4B5P

This drawing and the building works depicted are the copyright of the Architects and may not be reproduced except by written permission. This drawing must be read and checked against any specialist drawings and information provided. Do not scale prints. Figured dimension only to be taken from this drawing.