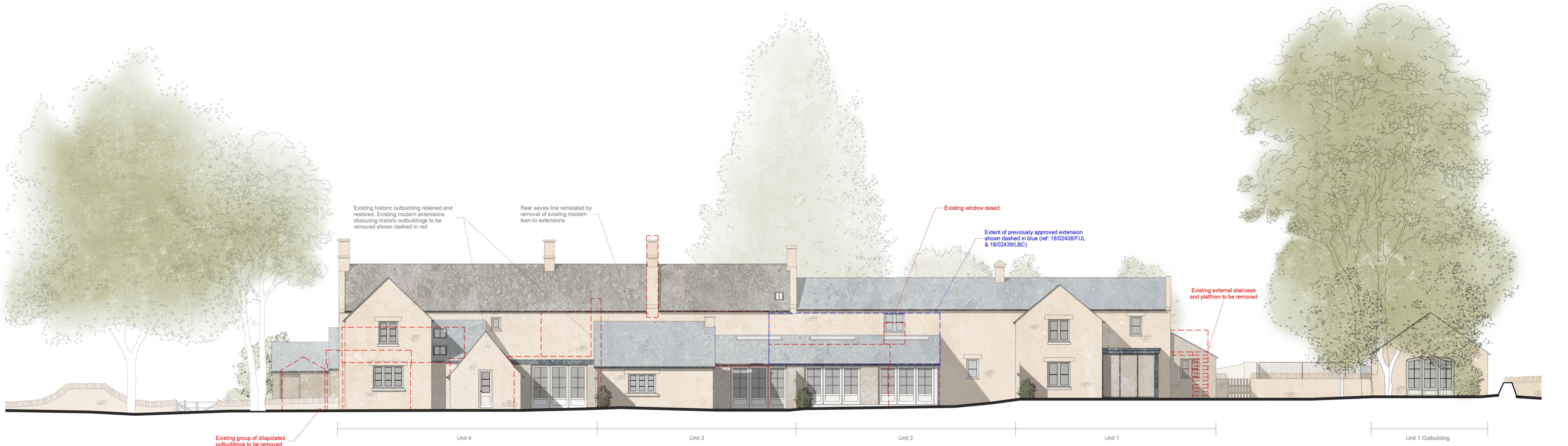


Materials
 Natural Stone
 Naturally silvered horizontal timber boarding
 Stone slate tiles
 Blue Slate tiles
 Single ply membrane roof in drak colour
 Traditional timber sash windows
 Flush timber casement windows
 Conservation style rooflights



Proposed South West



Proposed North East

Planning
 This drawing has been prepared for workstages up to planning application purposes only and is not intended for construction. The scale bar should only be used to check the drawing has been reproduced to the correct size. No responsibility can be accepted for errors made by others in scaling from this drawing.

Tyack Architects Ltd own copyright of the original design work in the drawings, documents and digital files which cannot be copied, loaned or disclosed without written agreement. Please refer to our Standard Terms of Business.

Key
 [Red dashed line] Proposed demolition
 [Blue dashed line] Previously approved extension ref: 18/02438/FUL & 18/02439/LBC



Tyack Architects Ltd
 The Mann Institute
 Moorlands March
 Stonehouse
 GLOS GL16 9LA
 T: 01628 655 490
 F: 01628 651 983
 E: info@tyackarchitects.com
 W: tyackarchitects.com

Planning
Proposed Elevations - SW & NE
 The Pusedown Inn, Compton Abdale
 The Sailsipre Partnership Ltd
 Scale: 1 : 100@A1 Date: May 2021
 Drawn/Checked: PS/DG Drg No: 2946-005 Rev:

Scale 1:100 5m

Copyright © Tyack Architects Ltd