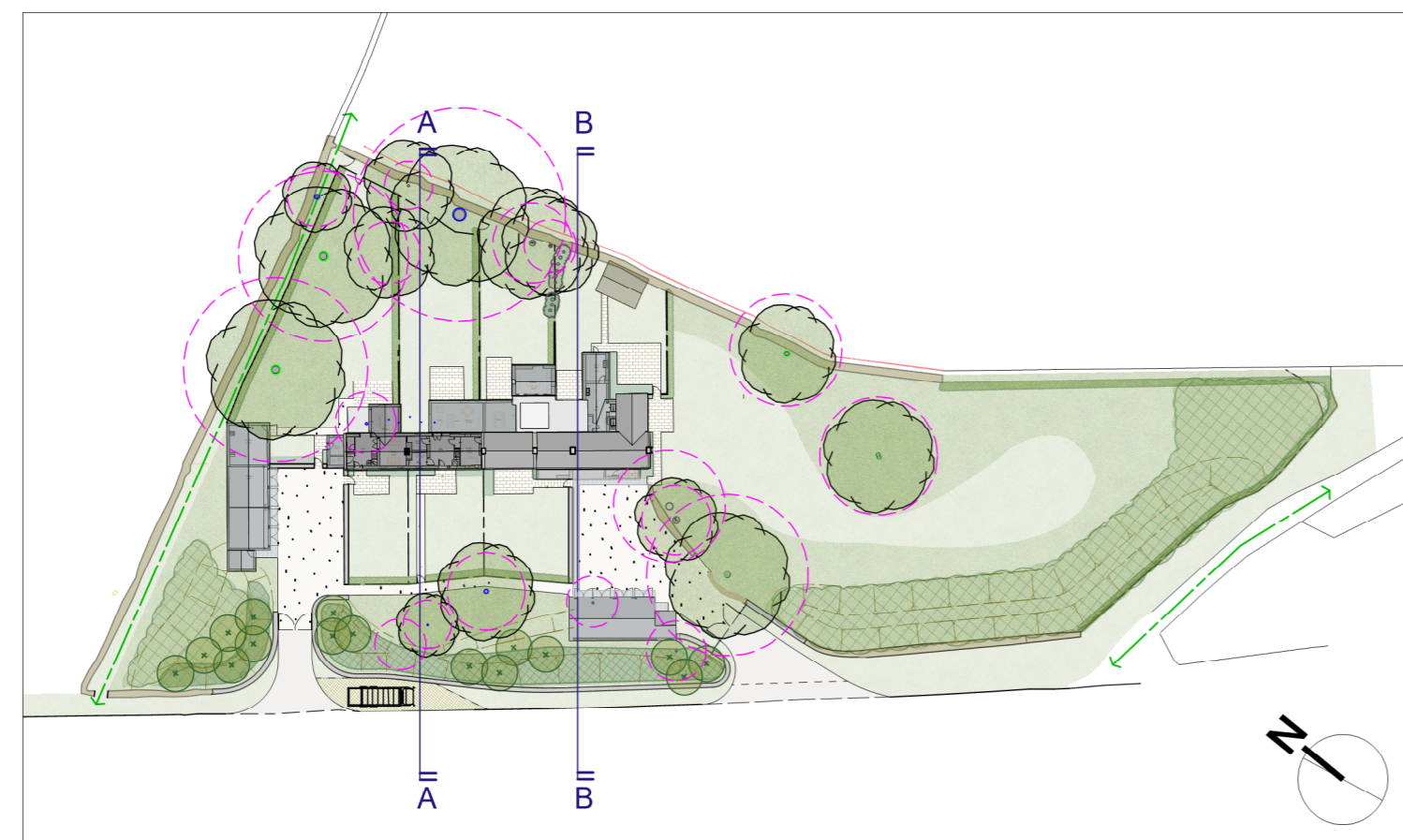


Section AA - 1:200



Section BB - 1:200



Key Plan - 1:1,000

Revisions:
 Rev - 30.04.2021 WIP draft first issued
 Rev A 18.05.2021 Final revs for planning

Portus + Whitton
 landscape architects
 Portus+Whitton LLP
 58 Ashcroft Road Cirencester
 Gloucestershire GL7 1QX
 T. 01285 644335 F. 01285 644336
 E. contact@portusandwhitton.co.uk

client						
Sailspire Partnership Limited						
project						
Puesdown Inn - Proposed Conversion						
drg						
Site Sections						
scale	scale at size	date	project no.	prefix	drg no.	rev
1:200	A2	April '21	1701	L	3	A
purpose of issue						
PLANNING						