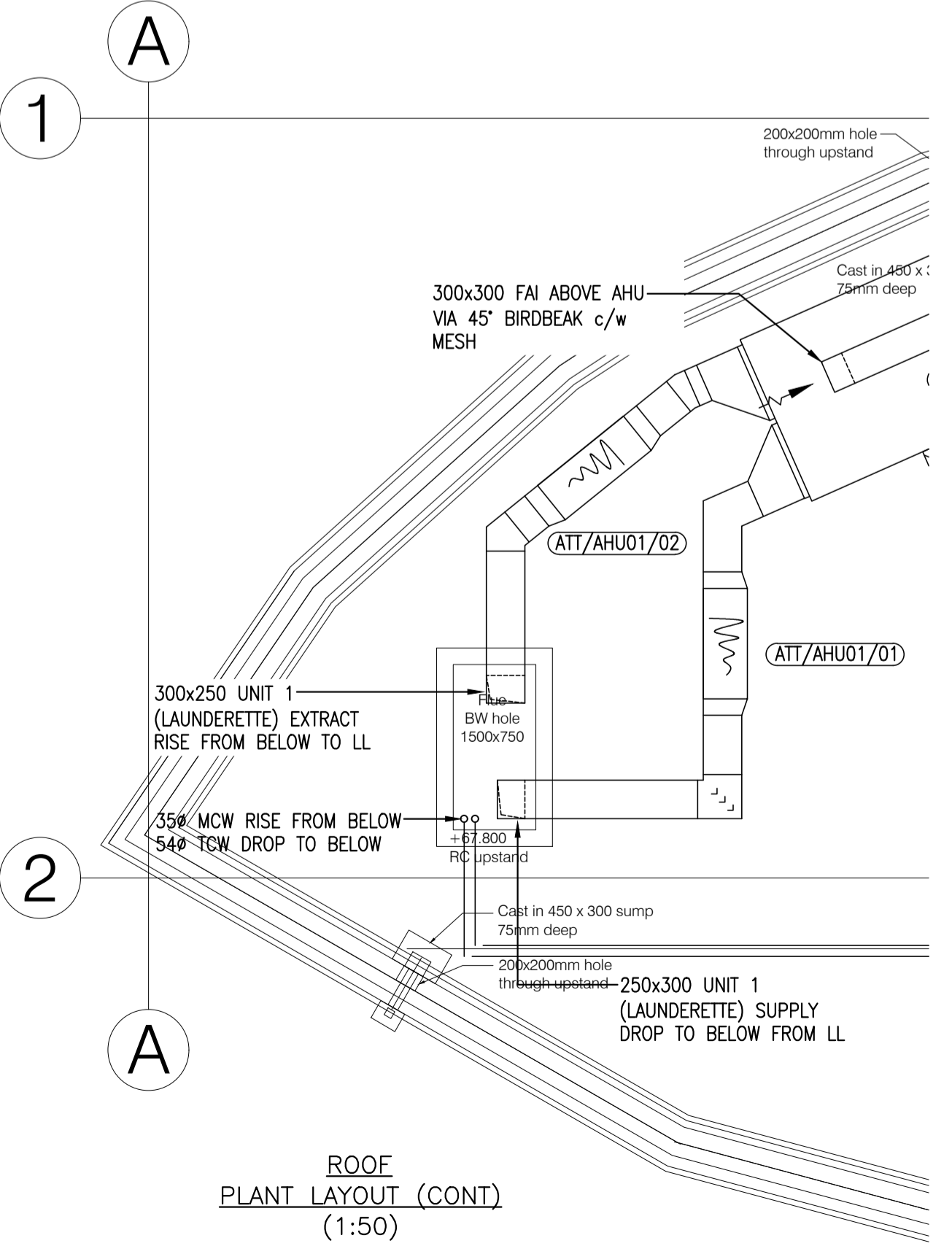
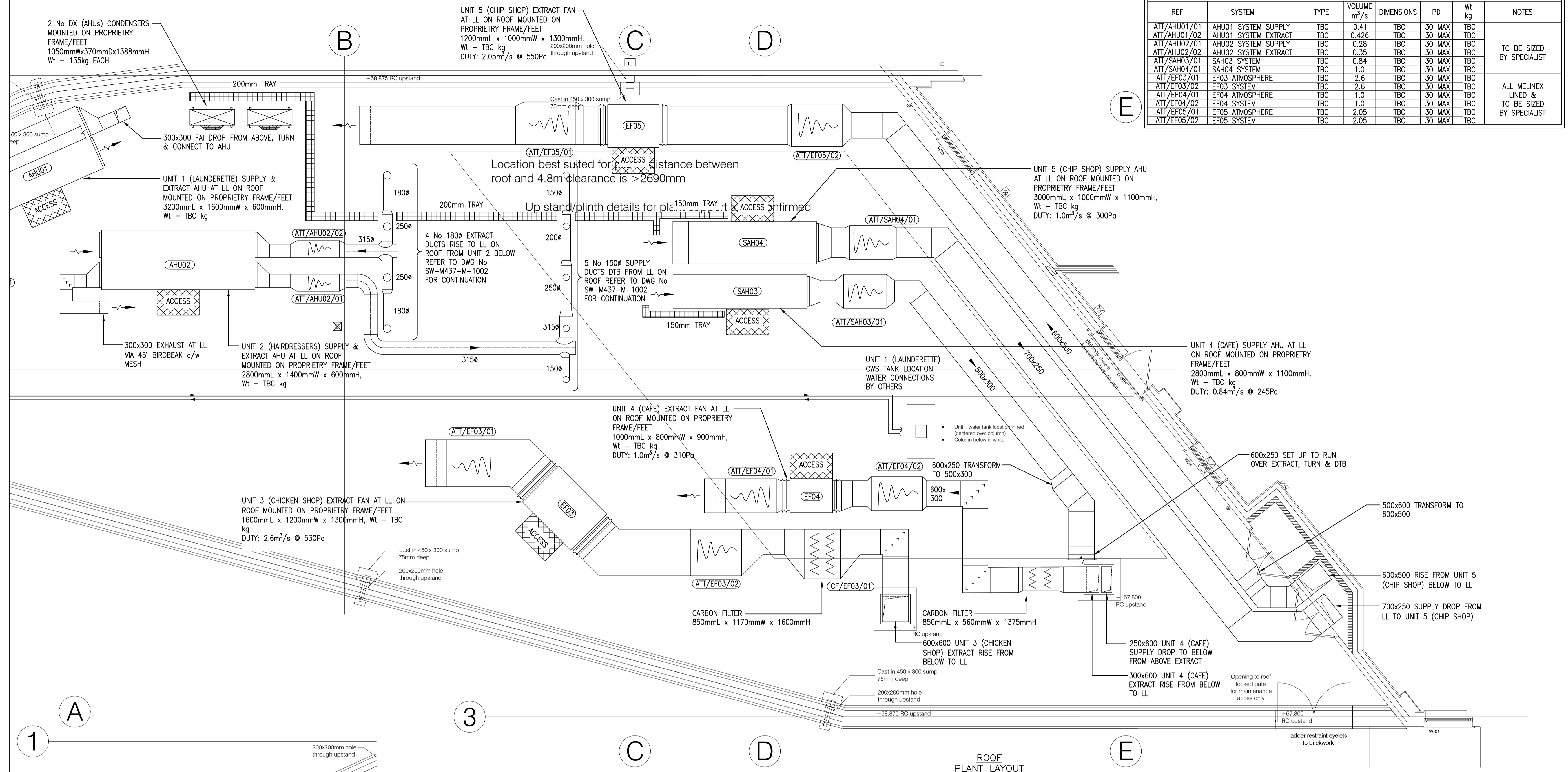


ATTENUATOR SCHEDULE - CAICE

REF	SYSTEM	TYPE	VOLUME m³/s	DIMENSIONS	PD	Wt kg	NOTES
ATT/AHU01/01	AHU01 SYSTEM SUPPLY	TBC	0.41	TBC	30 MAX	TBC	TO BE SIZED BY SPECIALIST
ATT/AHU01/02	AHU01 SYSTEM EXTRACT	TBC	0.426	TBC	30 MAX	TBC	
ATT/AHU02/01	AHU02 SYSTEM SUPPLY	TBC	0.28	TBC	30 MAX	TBC	
ATT/AHU02/02	AHU02 SYSTEM EXTRACT	TBC	0.35	TBC	30 MAX	TBC	
ATT/SAH03/01	SAH03 SYSTEM	TBC	0.84	TBC	30 MAX	TBC	
ATT/SAH04/01	SAH04 SYSTEM	TBC	1.0	TBC	30 MAX	TBC	ALL MELINEX LINED & TO BE SIZED BY SPECIALIST
ATT/EF03/01	EF03 ATMOSPHERE	TBC	2.6	TBC	30 MAX	TBC	
ATT/EF03/02	EF03 SYSTEM	TBC	2.6	TBC	30 MAX	TBC	
ATT/EF04/01	EF04 ATMOSPHERE	TBC	1.0	TBC	30 MAX	TBC	
ATT/EF04/02	EF04 SYSTEM	TBC	1.0	TBC	30 MAX	TBC	
ATT/EF05/01	EF05 ATMOSPHERE	TBC	2.05	TBC	30 MAX	TBC	
ATT/EF05/02	EF05 SYSTEM	TBC	2.05	TBC	30 MAX	TBC	



AIR HANDLING UNIT SCHEDULE - AIRCRAFT (01782 791545)

REF	AHU01	AHU02	SAH03	SAH04
AREA SERVED	LAUNDERETTE	HAIRDRESSERS	CAFE	CHIP SHOP
LENGTH (mm)	3200	2800	2800	3000
WIDTH (mm)	1600	1400	800	1000
HEIGHT (mm)	600	600	1100	1100
WEIGHT (kg)	TBC	TBC	TBC	TBC
DOUBLE STACKED Y/N	N	N	N/A	N/A
	SUPPLY	EXTRACT	SUPPLY	EXTRACT
AIR VOLUME (m³/s)	0.41	0.426	0.28	0.35
EXTERNAL STATIC (Pa)	280	300	300	245
MOTOR SIZE (kW)	3.0	3.0	3.0	2.4
RUN CURRENT (A)	4.8	4.8	4.8	3.8
ELECTRICAL SUPPLY (V)	400	400	400	400
FAN TYPE	EC PLUG	EC PLUG	EC PLUG	EC PLUG
FAN SPEED (RPM)	VARIABLE	VARIABLE	VARIABLE	VARIABLE
PRE-FILTER	PANEL G4	PANEL G4	PANEL G4	PANEL G4
SECONDARY RETURN	BAG F7	BAG F7	BAG F7	BAG F7
HEAT RECOVERY	CROSS FLOW (η = 50% MIN)	CROSS FLOW (η = 50% MIN)	N/A	N/A
PRE-HEATING COIL	N/A	N/A	ELEC	ELEC
AIR ON (°C)			-4	-4
AIR OFF (°C)			10	10
DUTY (kW)			15	18
HEATING COIL	ELEC	ELEC	DX	DX
AIR ON (°C)	12.5	12.5	-4	-4
AIR OFF (°C)	21	21	20	20
DUTY (kW)	6	6	12	14

FAN SCHEDULE - AIRCRAFT (01782 791545)

REF	SYSTEM	MANUFACTURER	TYPE	DUTY L/s @ Pa	POWER SUPPLY	DIMENSIONS	Wt kg	NOTES
EF03	CHICKEN SHOP	AIRCRAFT	PLUG	2.55 @ 530	400	1.6mLx1.2mWx1.3mH	TBC	
EF04	CAFE	AIRCRAFT	PLUG	1.0 @ 310	400	1.0mLx0.8mWx0.9mH	TBC	
EF05	FISH & CHIP SHOP	AIRCRAFT	PLUG	2.05 @ 550	400	1.2mLx1.0mWx1.3mH	TBC	

CONTROLS

- THE MECHANICAL SUB-CONTRACTOR SHALL ALLOW FOR ALL THE NECESSARY CONTROLS WITHIN A PANEL LOCATED IN AN APPROPRIATE LOCATION WITHIN THE COMMERCIAL UNITS. THE PANEL SHALL INCLUDE, AS A MINIMUM, THE FOLLOWING CONTROLS:
- SUPPLY FAN NEON RUN INDICATOR INCLUDING A FAULT LIGHT LINKED BACK TO THE FAN INVERTER
 - EXTRACT RUN LIGHT WITH FAULT INDICATOR LINKED BACK TO THE FAN INVERTER
 - FILTER DIRTY NEON INDICATORS WHERE APPLICABLE
 - FIRE ALARM INTERLOCK WITH NEON INDICATOR
 - GAS VALVE INTERLOCK WITH NEON INDICATOR (UNITS 3, 4 & 5)
 - ON/OFF SWITCH

VENTILATION INSTALLATION - TO BE READ IN CONJUNCTION WITH M+C SPECIFICATION:

- ALL DUCTWORK & FITTINGS TO BE MANUFACTURED & INSTALLED TO DW144 & DW172
- FLEXIBLE DUCTWORK SHALL NOT EXCEED 600mm IN LENGTH IN THE FULLY EXTENDED POSITION
- FLEXIBLE DUCTWORK SHALL NOT BE USED TO FORM 90° BENDS OR OFFSETS
- ALL DUCT BRANCHES OFF MAIN DUCTS SHALL BE SHOE TYPE
- ALL RECTANGULAR BENDS SHALL HAVE TURNING VANES
- ALL DUCTWORK SHALL BE FULLY THERMALLY INSULATED WITH THE EXCEPTION OF DIRTY EXTRACT SYSTEMS (UNLESS PART OF A SYSTEM WITH HEAT RECOVERY) IN ACCORDANCE WITH THE M+C SPECIFICATION
- PLENUM BOXES, DIFFUSERS & GRILLES SHALL BE INDEPENDENTLY SUPPORTED - NOT FROM THE CEILING
- BRANCH VCDs SHALL BE LOCATED AS FAR AWAY FROM GRILLES/DIFFUSERS AS POSSIBLE
- ALL PENETRATIONS SHALL BE FIRE STOPPED
- FIRE DAMPERS SHALL BE INSTALLED WHERE DUCTWORK PASSES THROUGH COMPARTMENT WALLS AND SHALL BE INSTALLED TO THE MANUFACTURERS INSTRUCTIONS WITH APPROPRIATE FRAME FOR THE WALL TYPE
- ACCESS DOORS SHALL BE INSTALLED AT ALL FIRE DAMPERS & VOLUME CONTROL DAMPERS

