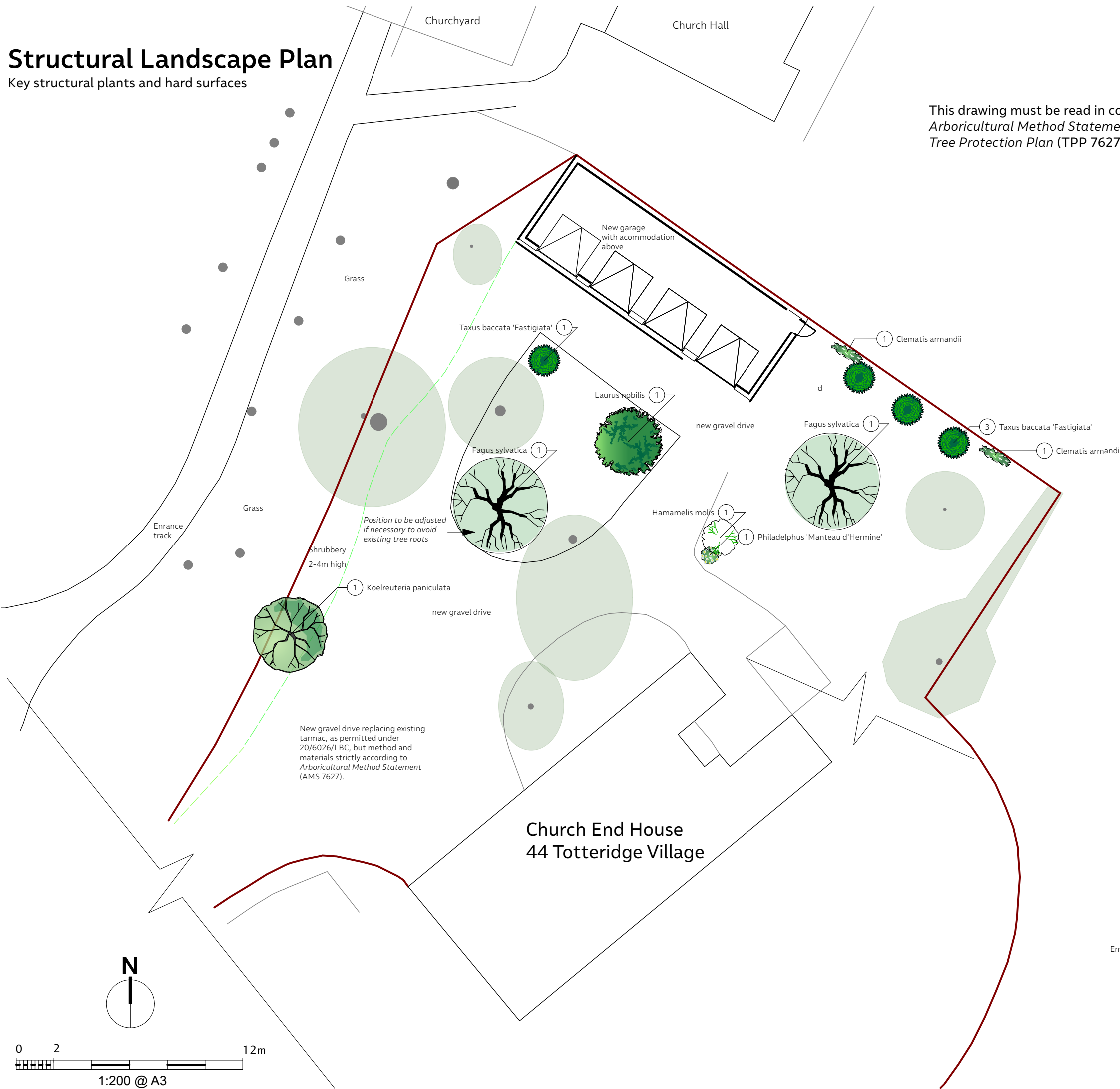


Structural Landscape Plan

Key structural plants and hard surfaces

This drawing must be read in conjunction with the *Arboricultural Method Statement (AMS 7627)* and *Tree Protection Plan (TPP 7627)*



- Boundary.
- Existing trees on site.
- Trunks of neighbouring trees.
- Replacement planting**
 - 2no. *Fagus sylvatica* (beech), min. 12-14cm girth at 1m, container grown.
 - 1no. *Laurus nobilis* (bay), min. 1.5-1.75m high, container grown.
- Sample enhancement planting**
 - 4no. *Taxus baccata* 'Fastigiata' (Irish yew), min. 1.2-1.4m high, container grown.
 - 1no. *Koelreuteria paniculata* (golden rain tree/pride of India), min. 12-14cm girth at 1m, container grown.
 - 1no. *Hamamelis mollis* (Chinese witch hazel), min. 1-1.25m tall, container grown.
 - 1no. *Philadelphus* 'Manteau d'Hermine' (dwarf mock orange), 2-3l container.
 - 2no. min. *Clematis armandii* (evergreen clematis), 3l min. container.

With other planting of owners' choice not shown



A mature *Taxus baccata* 'Fastigiata'



Emerging leaves of *Koelreuteria paniculata* in spring



Clematis armandii flowers

The Tree Bureau
 Old Warwick Studio
 2a Warwick Road
 St Albans Herts AL1 4DL
 01727 855006
 info@thetreebureau.co.uk

Title: Structural Landscape Plan

Drawing reference: LAND 7627

Scale 1:200 @ A3

Client: Fausto Furlotti

Site: 'Church End House', 44 Totteridge Village
 London N20 8PR

Date: 30 04 21

© The Tree Bureau 2021

