

PLANNING DRAWING - Proposed Signs

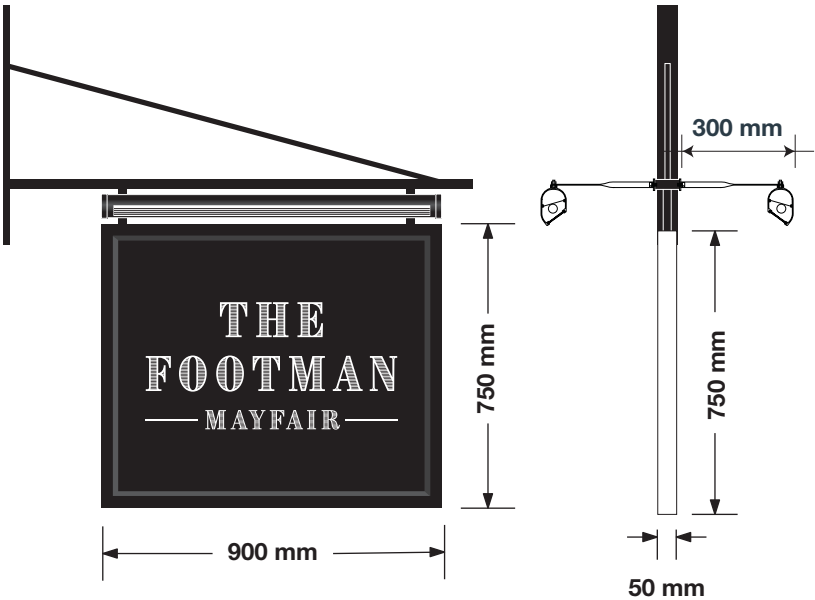
ITEM 01 (Qty 1)

Double sided pictorial sign & lighting.

Featuring:

- Timber panel and trim painted black
- 8mm Foamex letters finished White.
- Fixed to existing gibbet
- New LED trough lights finished RAL 9005.

Scale 1:20



HEIGHT ABOVE GROUND 4780mm

Sign Colour



Brand Typefaces

Primary : Brim Narrow Face Regular

Secondary : Brim Narrow Face Regular



Scale 1:20 @ A3

ITEM 02 (Qty 1)

Set of letters to the CURVED bay window.

Featuring:

- 19mm Foamex letters finished White.
- Applied black vinyl detail
- Brass locators.

Scale 1:20



HEIGHT ABOVE GROUND 3040mm

ITEM 04 (Qty 6)

Refurbish existing lanterns

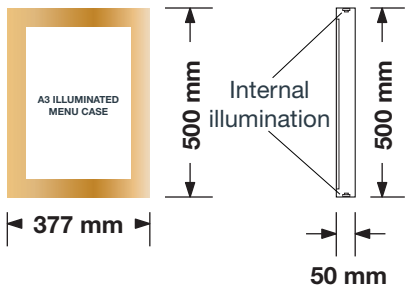
Featuring:

- Clean lenses
- Polish lantern bodies

ITEM 05 (Qty 1)

New internally illuminated  
A3 brass menu case

Scale 1:20



HEIGHT ABOVE GROUND 1275mm

ITEM 03 (Qty 01)

Replacement retractable awning.

Featuring:

- Printed white lettering to the valance.

Scale 1:20

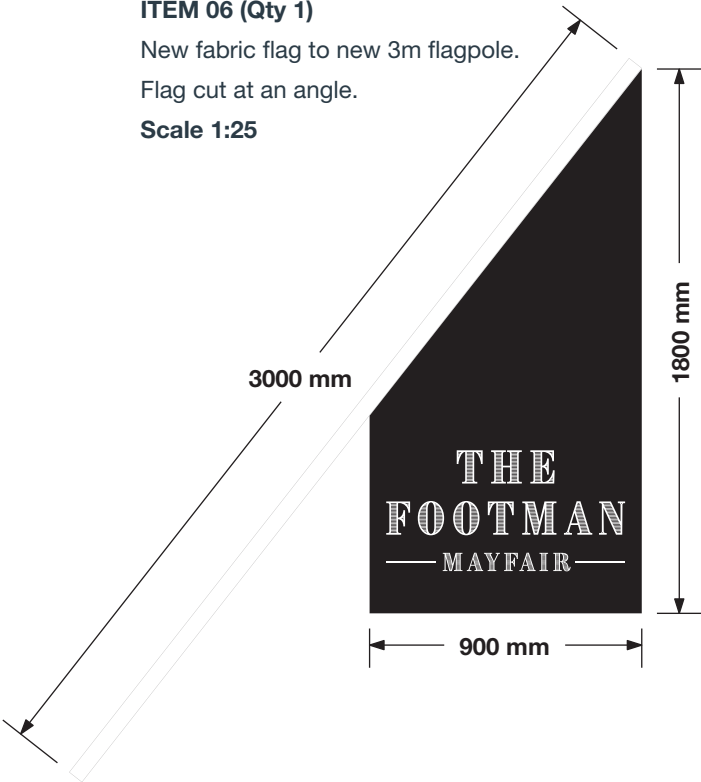


ITEM 06 (Qty 1)

New fabric flag to new 3m flagpole.

Flag cut at an angle.

Scale 1:25



ITEM 07 (Qty 2)

Replacement retractable awning.

Featuring:

- Printed white lettering to the valance.

Scale 1:20



GREENE KING  
BURY ST EDMUNDS

THE FOOTMAN.  
5 CHARLES STREET,  
MAYFAIR,  
LONDON  
W1J 5DF.

161119 (Rev F)  
07/06/21 - SRL

COPYRIGHT :  
THE ATTACHED DESIGNS AND ILLUSTRATIONS  
ARE INTENDED SOLELY FOR, AND SHOULD  
ONLY BE USED BY, THOSE TO WHOM THIS  
DESIGN SPECIFICATION IS ADDRESSED.

THE CONTENTS ARE STRICTLY  
PRIVATE AND CONFIDENTIAL.  
ANY FORM OF REPRODUCTION,  
DISSEMINATION, COPYING, DISCLOSURE,  
MODIFICATION OR DISTRIBUTION IS STRICTLY  
PROHIBITED WITHOUT THE PRIOR WRITTEN  
CONSENT OF ASHLEIGH SIGNS LTD  
(COMPANY NUMBER : 1325080)  
WHOSE REGISTERED ADDRESS IS:  
ASHLEIGH HOUSE, BECKBRIDGE ROAD,  
NORMANTON INDUSTRIAL ESTATE,  
NORMANTON. WF6 1TE

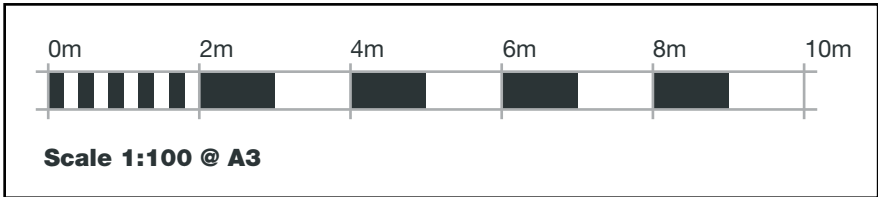


THE FOOTMAN.  
5 CHARLES STREET,  
MAYFAIR,  
LONDON  
W1J 5DF.

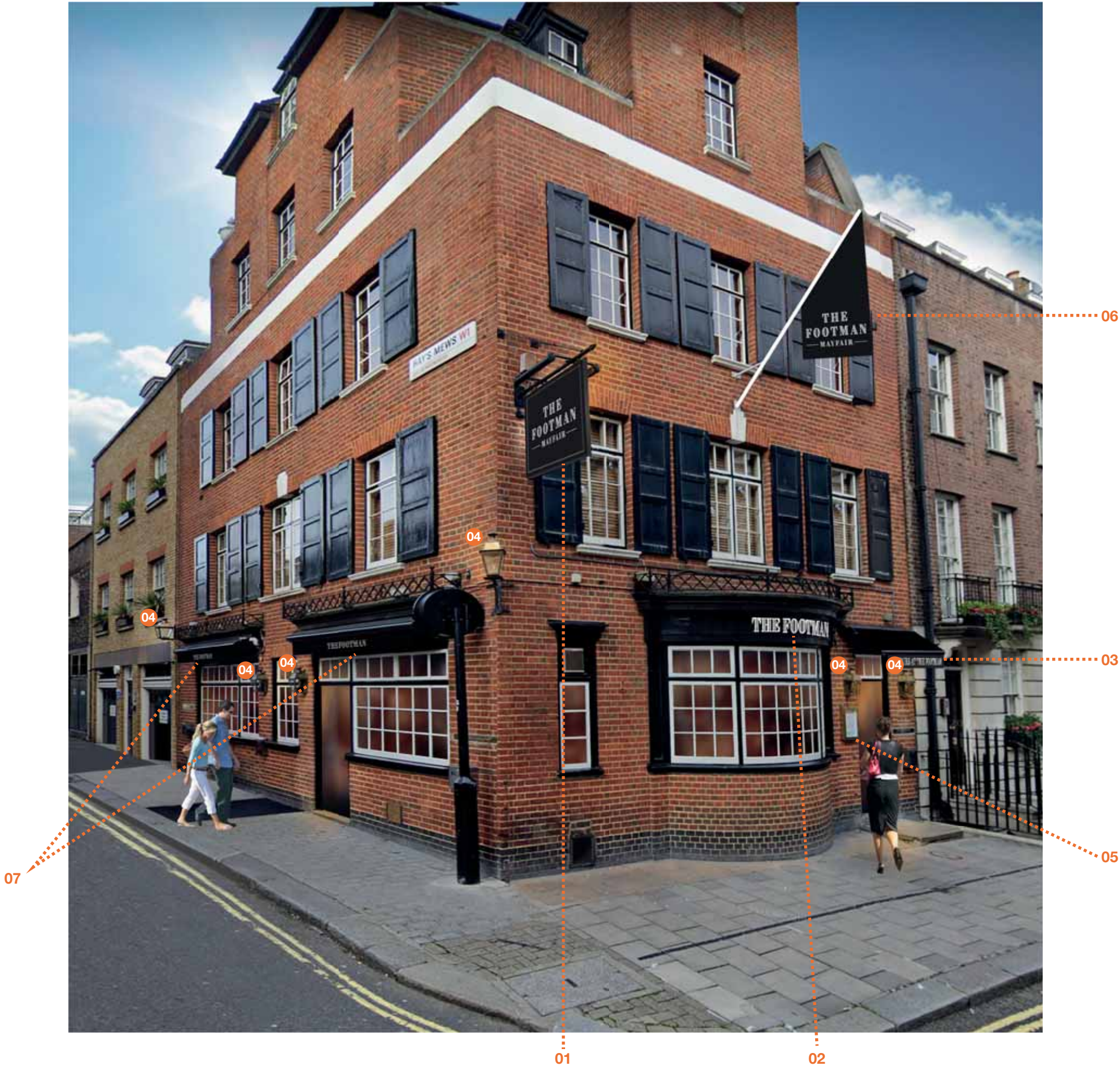
161119 (Rev F)  
07/06/21 - SRL

COPYRIGHT :  
THE ATTACHED DESIGNS AND ILLUSTRATIONS  
ARE INTENDED SOLELY FOR, AND SHOULD  
ONLY BE USED BY, THOSE TO WHOM THIS  
DESIGN SPECIFICATION IS ADDRESSED.

THE CONTENTS ARE STRICTLY  
PRIVATE AND CONFIDENTIAL.  
ANY FORM OF REPRODUCTION,  
DISSEMINATION, COPYING, DISCLOSURE,  
MODIFICATION OR DISTRIBUTION IS STRICTLY  
PROHIBITED WITHOUT THE PRIOR WRITTEN  
CONSENT OF ASHLEIGH SIGNS LTD  
(COMPANY NUMBER : 1325080)  
WHOSE REGISTERED ADDRESS IS:  
ASHLEIGH HOUSE, BECKBRIDGE ROAD,  
NORMANTON INDUSTRIAL ESTATE,  
NORMANTON. WF6 1TE







THE FOOTMAN.  
5 CHARLES STREET,  
MAYFAIR,  
LONDON  
W1J 5DF.

161119 (Rev F)  
07/06/21 - SRL

COPYRIGHT :  
THE ATTACHED DESIGNS AND ILLUSTRATIONS  
ARE INTENDED SOLELY FOR, AND SHOULD  
ONLY BE USED BY, THOSE TO WHOM THIS  
DESIGN SPECIFICATION IS ADDRESSED.

THE CONTENTS ARE STRICTLY  
PRIVATE AND CONFIDENTIAL.  
ANY FORM OF REPRODUCTION,  
DISSEMINATION, COPYING, DISCLOSURE,  
MODIFICATION OR DISTRIBUTION IS STRICTLY  
PROHIBITED WITHOUT THE PRIOR WRITTEN  
CONSENT OF ASHLEIGH SIGNS LTD  
(COMPANY NUMBER : 1325080)  
WHOSE REGISTERED ADDRESS IS:  
ASHLEIGH HOUSE, BECKBRIDGE ROAD,  
NORMANTON INDUSTRIAL ESTATE,  
NORMANTON. WF6 1TE

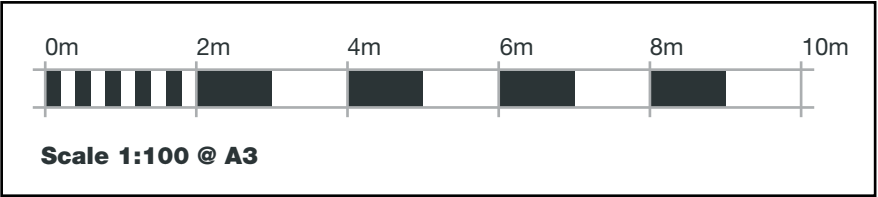




**HAYES MEWS ELEVATION**  
Scale 1:100 @ A3



**CHARLES STREET ELEVATION**  
Scale 1:100 @ A3



**THE FOOTMAN.**  
5 CHARLES STREET,  
MAYFAIR,  
LONDON  
W1J 5DF.

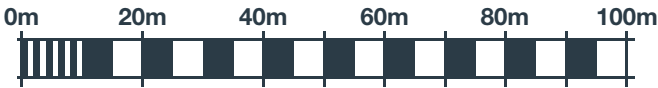
**161119 (Rev F)**  
07/06/21 - SRL

**COPYRIGHT :**  
THE ATTACHED DESIGNS AND ILLUSTRATIONS  
ARE INTENDED SOLELY FOR, AND SHOULD  
ONLY BE USED BY, THOSE TO WHOM THIS  
DESIGN SPECIFICATION IS ADDRESSED.

**THE CONTENTS ARE STRICTLY  
PRIVATE AND CONFIDENTIAL.**  
ANY FORM OF REPRODUCTION,  
DISSEMINATION, COPYING, DISCLOSURE,  
MODIFICATION OR DISTRIBUTION IS STRICTLY  
PROHIBITED WITHOUT THE PRIOR WRITTEN  
CONSENT OF ASHLEIGH SIGNS LTD  
(COMPANY NUMBER : 1325080)  
WHOSE REGISTERED ADDRESS IS:  
ASHLEIGH HOUSE, BECKBRIDGE ROAD,  
NORMANTON INDUSTRIAL ESTATE,  
NORMANTON. WF6 1TE







Scale 1:1250 @ A3



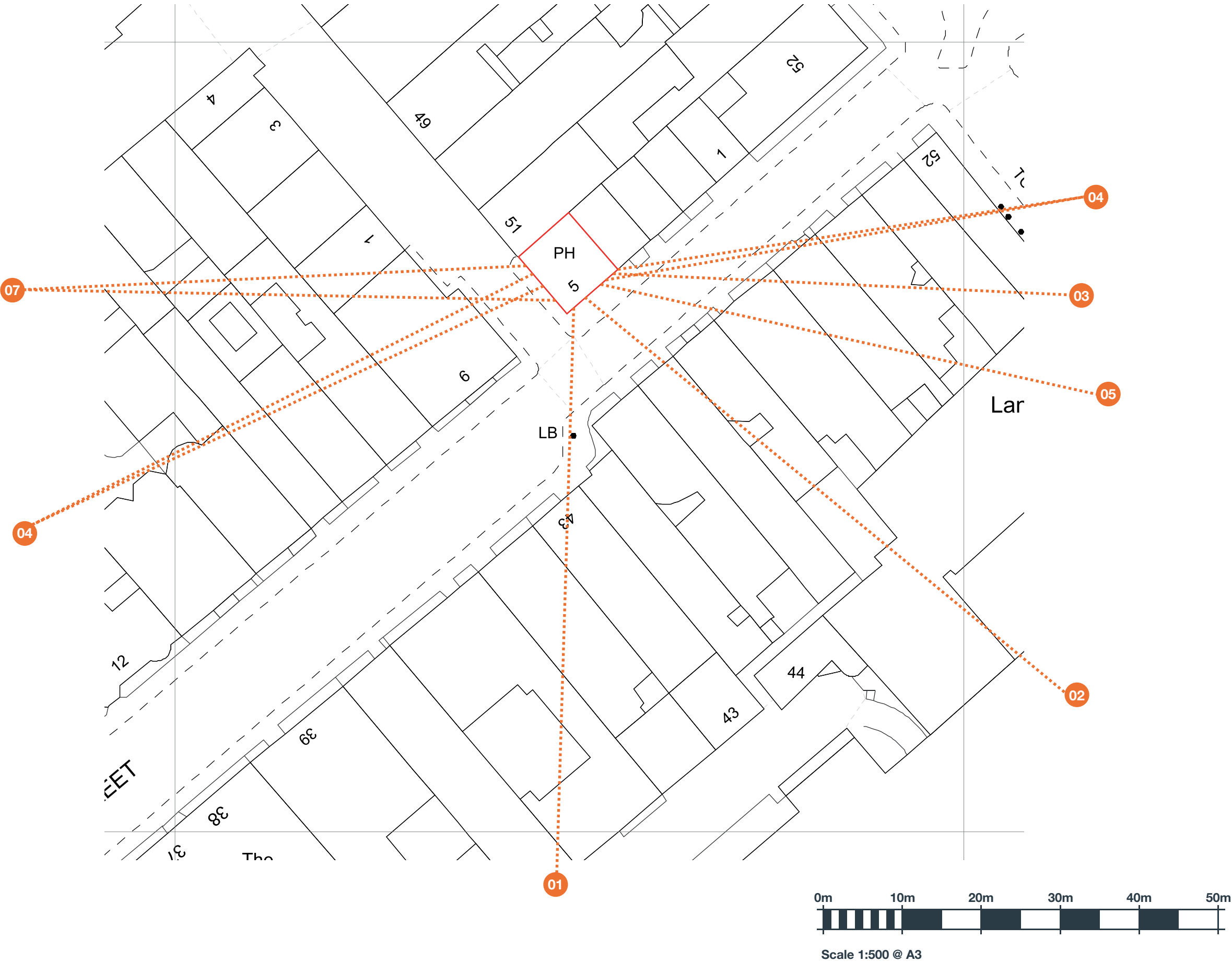
**THE FOOTMAN.**  
5 CHARLES STREET,  
MAYFAIR,  
LONDON  
W1J 5DF.

**161119 (Rev F)**  
07/06/21 - SRL

**COPYRIGHT :**  
THE ATTACHED DESIGNS AND ILLUSTRATIONS  
ARE INTENDED SOLELY FOR, AND SHOULD  
ONLY BE USED BY, THOSE TO WHOM THIS  
DESIGN SPECIFICATION IS ADDRESSED.

**THE CONTENTS ARE STRICTLY  
PRIVATE AND CONFIDENTIAL.**  
ANY FORM OF REPRODUCTION,  
DISSEMINATION, COPYING, DISCLOSURE,  
MODIFICATION OR DISTRIBUTION IS STRICTLY  
PROHIBITED WITHOUT THE PRIOR WRITTEN  
CONSENT OF ASHLEIGH SIGNS LTD  
(COMPANY NUMBER : 1325080)  
WHOSE REGISTERED ADDRESS IS:  
ASHLEIGH HOUSE, BECKBRIDGE ROAD,  
NORMANTON INDUSTRIAL ESTATE,  
NORMANTON. WF6 1TE





**THE FOOTMAN.**  
5 CHARLES STREET,  
MAYFAIR,  
LONDON  
W1J 5DF.

**161119 (Rev F)**  
07/06/21 - SRL

**COPYRIGHT :**  
THE ATTACHED DESIGNS AND ILLUSTRATIONS  
ARE INTENDED SOLELY FOR, AND SHOULD  
ONLY BE USED BY, THOSE TO WHOM THIS  
DESIGN SPECIFICATION IS ADDRESSED.

**THE CONTENTS ARE STRICTLY  
PRIVATE AND CONFIDENTIAL.**  
ANY FORM OF REPRODUCTION,  
DISSEMINATION, COPYING, DISCLOSURE,  
MODIFICATION OR DISTRIBUTION IS STRICTLY  
PROHIBITED WITHOUT THE PRIOR WRITTEN  
CONSENT OF ASHLEIGH SIGNS LTD  
(COMPANY NUMBER : 1325080)  
WHOSE REGISTERED ADDRESS IS:  
ASHLEIGH HOUSE, BECKBRIDGE ROAD,  
NORMANTON INDUSTRIAL ESTATE,  
NORMANTON. WF6 1TE