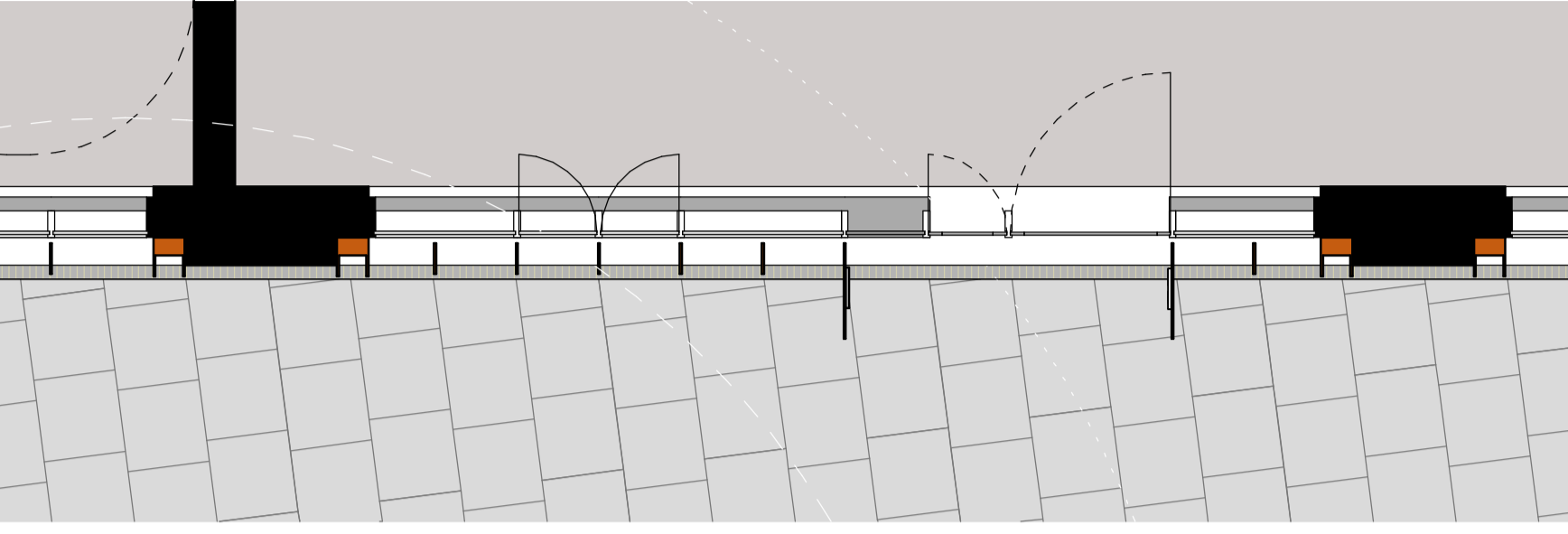


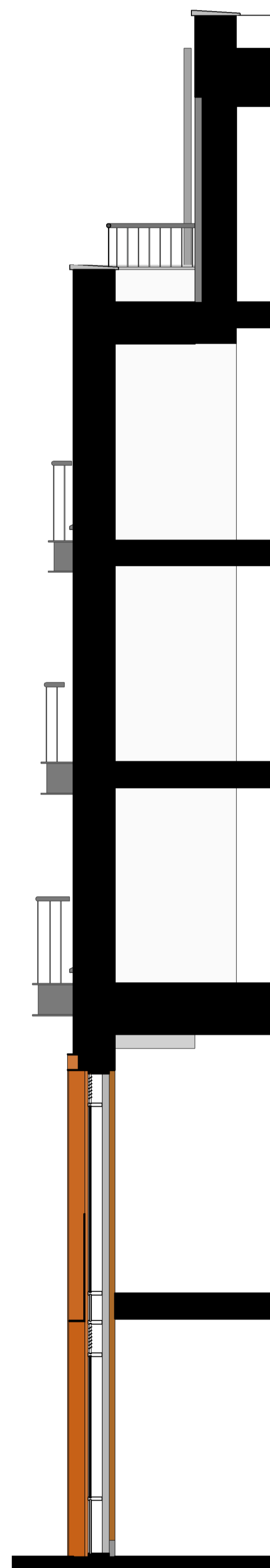
1 3D View



2 Plan  
1:50



4 Elevation  
1:50



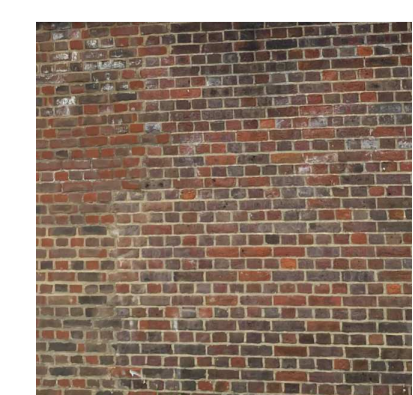
5 Section  
1:50



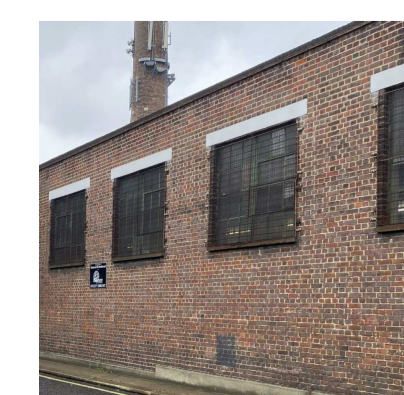
3 Elevation  
1:20

**MATERIAL PALETTE**

EXISTING FAÇADES



RED BRICK  
ENGLISH CROSS BOND



WHITE TOP OF WINDOWS

PRIMARY FAÇADE = RED BRICK



HURSTWOOD MULTI - UK BRICK  
Waterstruck long brick

SETBACK FAÇADE = DARK GREY BRICK



BLOCKLEYS  
SYNTHESIS S14  
DARK GREY MORTAR

METALWORK

CORTEN



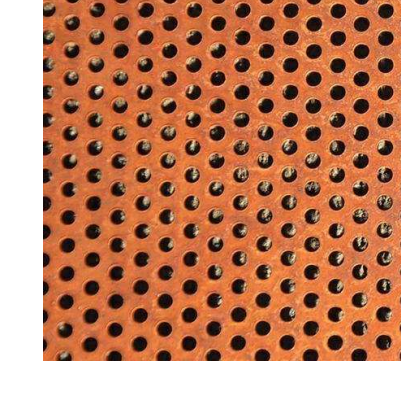
CORTEN

WINDOW FRAMES



RAL 7016  
BALCONY LIGHT  
RAL 7016

PERFORATED CORTEN PANELS



PERFORATED CORTEN  
PANELS

PORTICOS + NEW STREET FAÇADE

PORTICOS



GRC PANELS - white



GRC PANELS - white

1. Inward opening windows – RAL 7016
2. Sliding patio doors – RAL 7016
3. Steel balconies and balustrades – RAL 7016
4. Aluminium rainwater pipes – RAL 7016
5. Aluminium cills – RAL 7016
6. Precast concrete cills
7. Precast concrete capping
8. Red Brick façade – Hurstwood Multi
9. Dark Grey Brick façade – Brockleys Synthesis S14
10. Curtain walling - RAL 7016
11. Base Spandrel panel - RAL 7016
12. First floor glass spandrel
13. Louvres – RAL 7016
14. Solar shading – Corten steel
15. Facing panel – perforated Corten steel
16. Commercial entrance canopies – Corten steel
17. GRC panelling and entrance porticos
18. Retained façade – existing brick wall
19. Steel Portico – RAL 7016
20. Balcony divider - Steel framing, RAL 7016
21. Balcony light - RAL 7016
22. Column cladding - RAL 7016

| Rev | Description      | Date       | Dr | App |
|-----|------------------|------------|----|-----|
| C2  | Minor amendments | 01-06-2021 |    |     |
| C1  | First Issue      | 30-04-21   |    |     |
| TS  |                  | 30-04-2021 |    |     |



AHR London Ltd  
5-8 Handcock Street  
London  
EC1R 4EG  
United Kingdom  
T +44(0)20 78379769  
E london@ahr.co.uk  
www.ahr.co.uk

|  |                            |
|--|----------------------------|
| Client Name<br>Southern Housing Group                          |                            |
| Project<br>49 - 53 Glengall Road                               |                            |
| Drawing<br>Bay detail 04                                       |                            |
| Computer File<br>C:\Projects\49-53 Glengall\49-53_Glengall.dwg | Plot Date                  |
| Project Number<br>2020.000475.000                              | Scale<br>As indicated @ A0 |
| Drawing Number<br>GLE-AHR-B1-ZZ-DR-A-20904                     | Rev<br>C2                  |
| Issue Status<br>Info   |                            |

This drawing is to be used in conjunction with all related drawings. All dimensions must be checked and verified on site before commencing any work or producing shop drawings. The contractor should be notified immediately of any discrepancy. This drawing is copyright and remains the property of AHR.