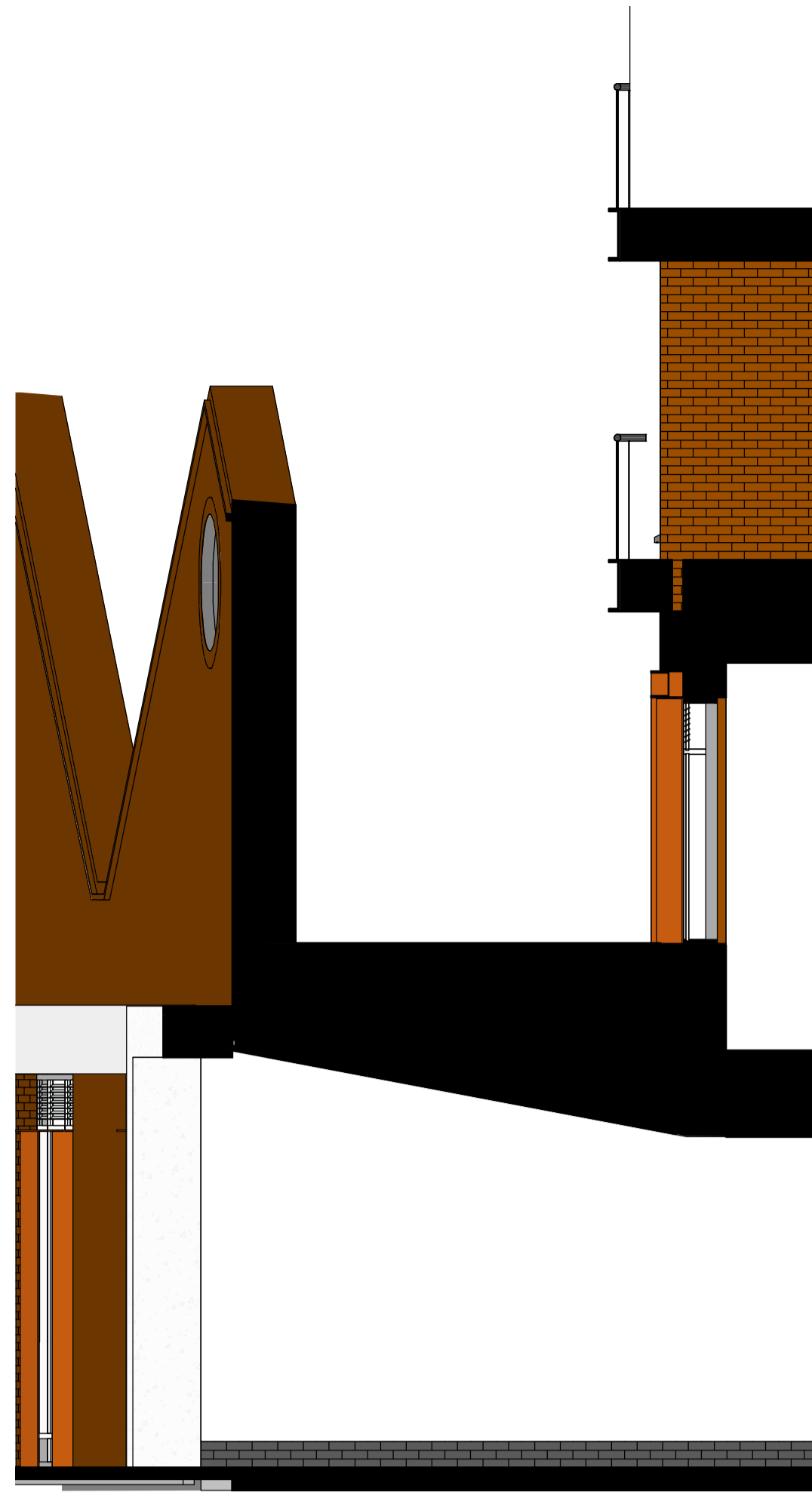
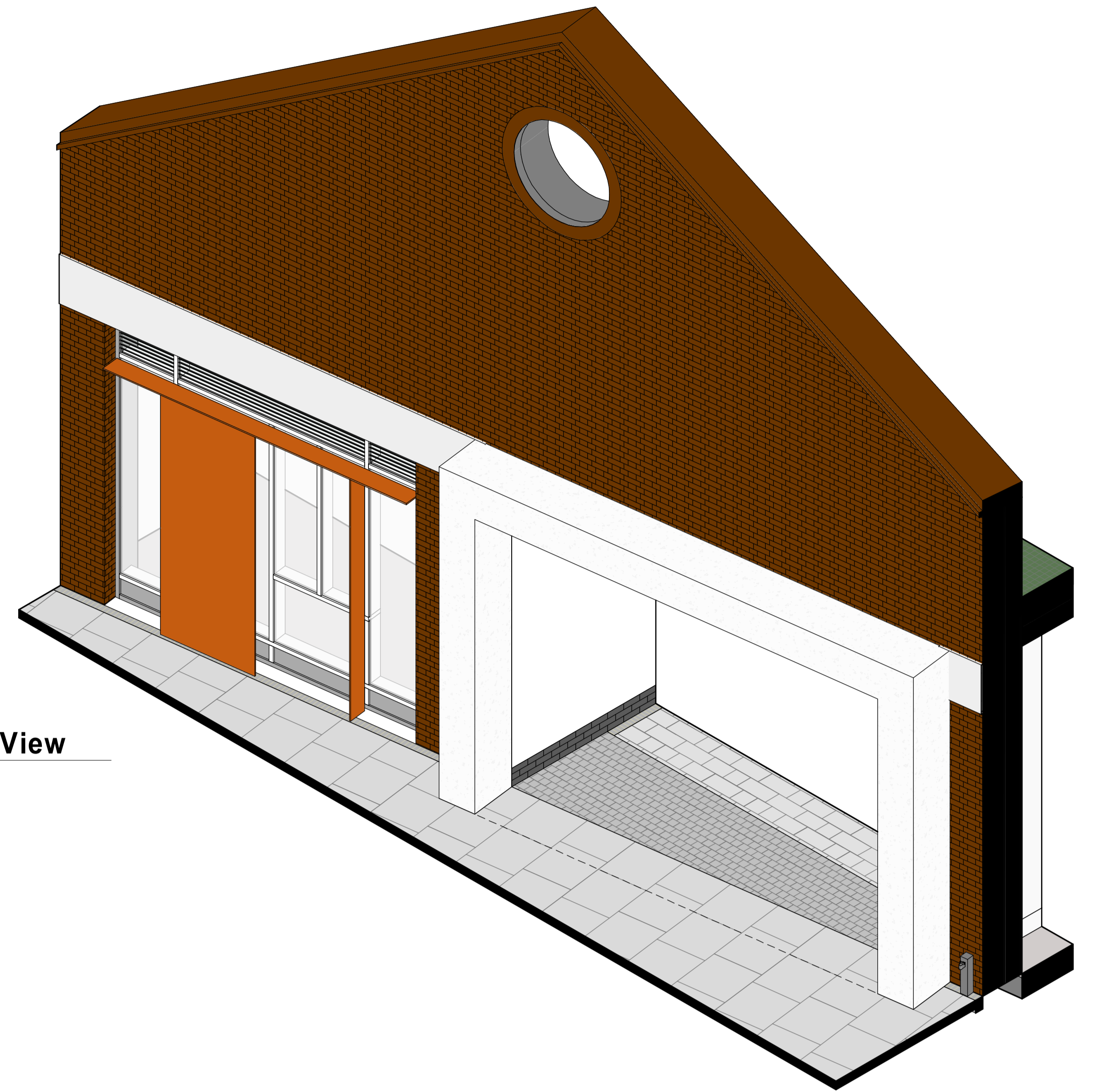


5 Plan  
1:50



1 Section  
1:50



4 3D View



3 Elevation  
1:50



2 Elevation  
1:20

### MATERIAL PALETTE

#### EXISTING FAÇADES



RED BRICK  
ENGLISH CROSS BOND



WHITE TOP OF WINDOWS

#### PRIMARY FAÇADE = RED BRICK



HURSTWOOD MULTI - LW BRICK  
WATERBUCK LONG BRICK

#### SETBACK FAÇADE = DARK GREY BRICK



BLOCKEYS  
SYNTHESIS S14  
DARK GREY MORTAR

#### METALWORK

##### CORTEN



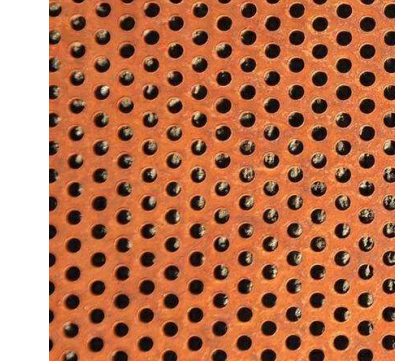
CORTEN

##### WINDOW FRAMES



RAL 7016

##### PERFORATED CORTEN PANELS



PERFORATED CORTEN  
PANELS

##### BALCONY LIGHT



BALCONY LIGHT  
RAL 7016

#### PORTICOS + NEW STREET FAÇADE

##### PORTICOS

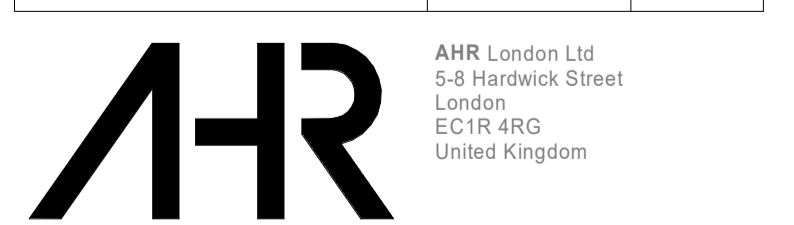


GRC PANELS - white



GRC PANELS - white

Rev	Description	Date	Dr	App
C2	Minor amendments	01-06-2021		
C1	First issue	30-04-21		
TS		30-04-2021		



Client name  
Southern Housing Group

Project  
49 - 53 Glengall Road

Drawing  
Bay detail 01

Computer file  
2020.000475.000

Drawing number  
GLE-AHR-B1-ZZ-DR-A-20901

This drawing is to be used in conjunction with all related drawings. All dimensions must be checked and verified on site before commencing any work or producing shop drawings. The copyright should be retained irrespective of any discrepancy. This drawing is copyright and remains the property of AHR.

- Inward opening windows - RAL 7016
- Sliding patio doors - RAL 7016
- Steel balconies and balustrades - RAL 7016
- Aluminium rainwater pipes - RAL 7016
- Aluminium cills - RAL 7016
- Precast concrete cills
- Precast concrete capping
- Red Brick façade - Hurstwood Multi
- Dark Grey Brick façade - Brockleys Synthesis S14
- Curtain walling - RAL 7016
- Base Spandrel panel - RAL 7016
- First floor glass spandrel
- Louvers - RAL 7016
- Solar shading - Corten steel
- Facing panel - perforated Corten steel
- Commercial entrance canopies - Corten steel
- GRC panelling and entrance porticos
- Retained façade - existing brick wall
- Steel Portico - RAL 7016
- Balcony divider - Steel framing, RAL 7016
- Balcony light - RAL 7016
- Column cladding - RAL 7016