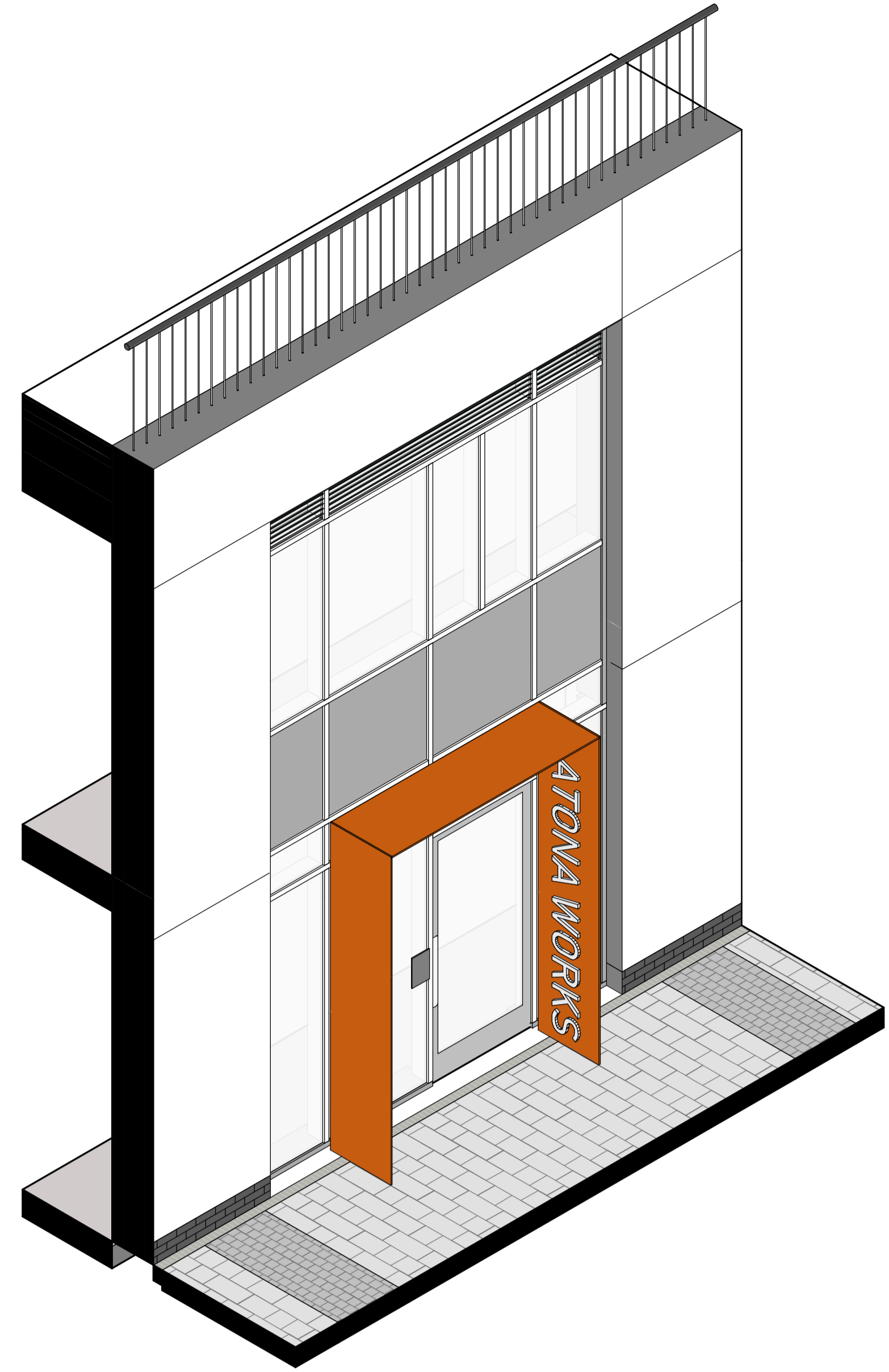


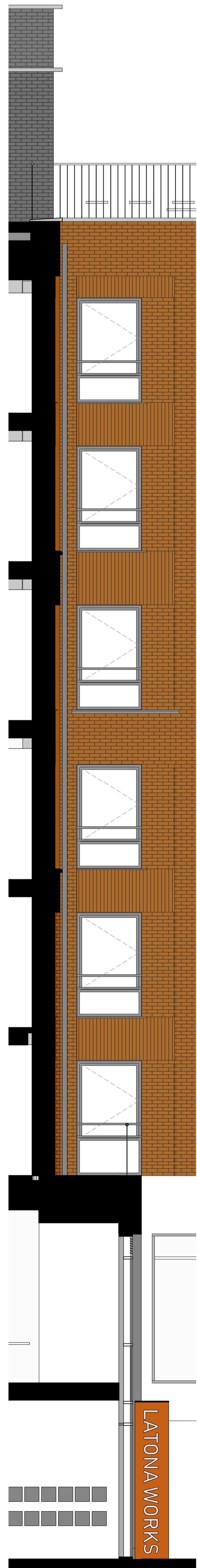
1 Plan  
1 : 50



2 3D View



4 Elevation  
1 : 50



5 Section  
1 : 50

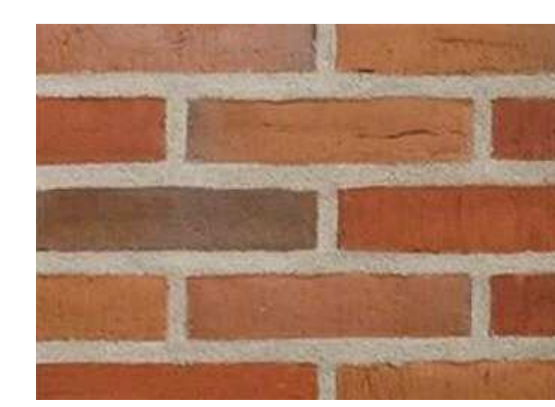


3 Elevation  
1 : 20

1. Inward opening windows – RAL 7016
2. Sliding patio doors – RAL 7016
3. Steel balconies and balustrades – RAL 7016
4. Aluminium rainwater pipes – RAL 7016
5. Aluminium cills – RAL 7016
6. Precast concrete cills
7. Precast concrete capping
8. Red Brick façade – Hurstwood Multi
9. Dark Grey Brick façade – Brockleys Synthesis S14
10. Curtain walling - RAL 7016
11. Base Spandrel panel - RAL 7016
12. First floor glass spandrel
13. Louvres – RAL 7016
14. Solar shading – Corten steel
15. Facing panel – perforated Corten steel
16. Commercial entrance canopies – Corten steel
17. GRC panelling and entrance porticos
18. Retained façade – existing brick wall
19. Steel Portico – RAL 7016
20. Balcony divider - Steel framing, RAL 7016
21. Balcony light - RAL 7016
22. Column cladding - RAL 7016

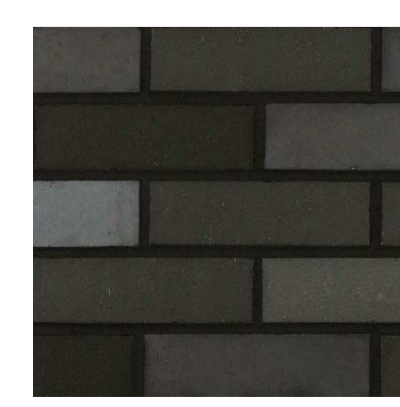
MATERIAL PALETTE

PRIMARY FAÇADE = RED BRICK



HURSTWOOD MULTI  
WARRICK KING BRICK

SETBACK FAÇADE = DARK GREY BRICK



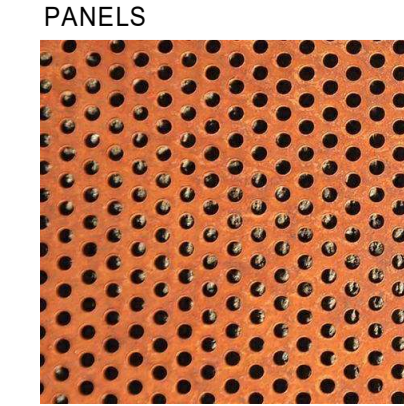
BROCKLEYS  
S14 MORTAR  
DARK GREY MORTAR

METALWORK

CORTEN



PERFORATED CORTEN  
PANELS



WINDOW FRAMES



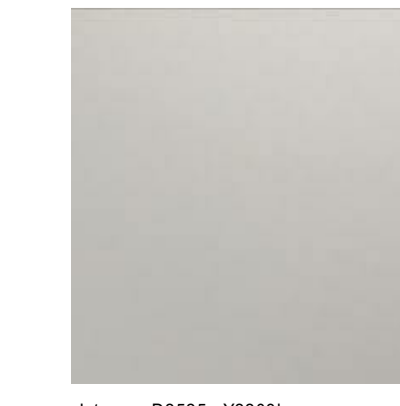
RAL 7016

PORTICOS + NEW STREET FAÇADE

GRC PANELS - white



SOFFITS



Interpon D2525 - Y22031  
Soft silver matt

Rev	Description	Date	Dr	App
C2	Minor amendments	01-06-2021		
C1	First Issue	30-04-21		
TS		30-04-2021		



AHR London Ltd  
5-8 Beakwall Street  
London  
EC1R 4EG  
United Kingdom  
T +44(0)20 78379769  
E london@ahr.co.uk  
www.ahr.co.uk

client name <b>Southern Housing Group</b>	
project <b>49 - 53 Glengall Road</b>	
drawing <b>Bay detail 07</b>	
computer file C:\projects\2020\000475\000_000000_000000.dwg	plot date
project number <b>2020.000475.000</b>	scale <b>As indicated@A0</b>
drawing number <b>GLE-AHR-B1-ZZ-DR-A-20907</b>	rev <b>C2</b>
	issue status <b>info</b>

This drawing is to be used in conjunction with all related drawings. All dimensions must be checked and verified on site before commencing any work or producing shop drawings. The copyright should be retained irrespective of any discrepancies. This drawing is copyright and remains the property of AHR.