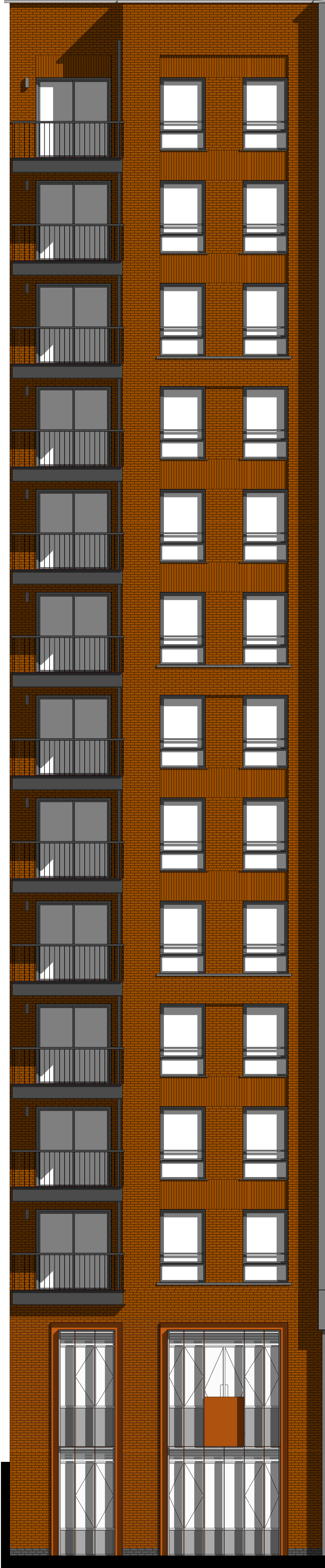
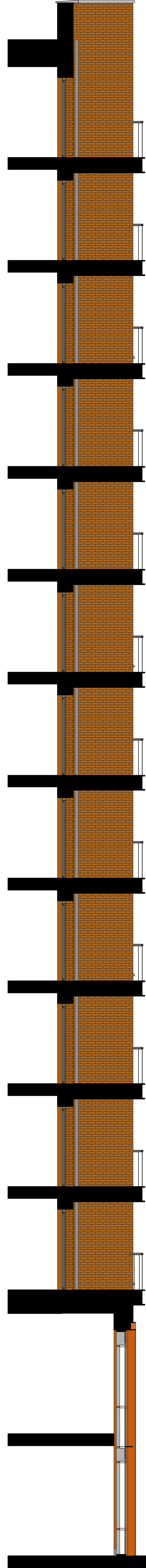


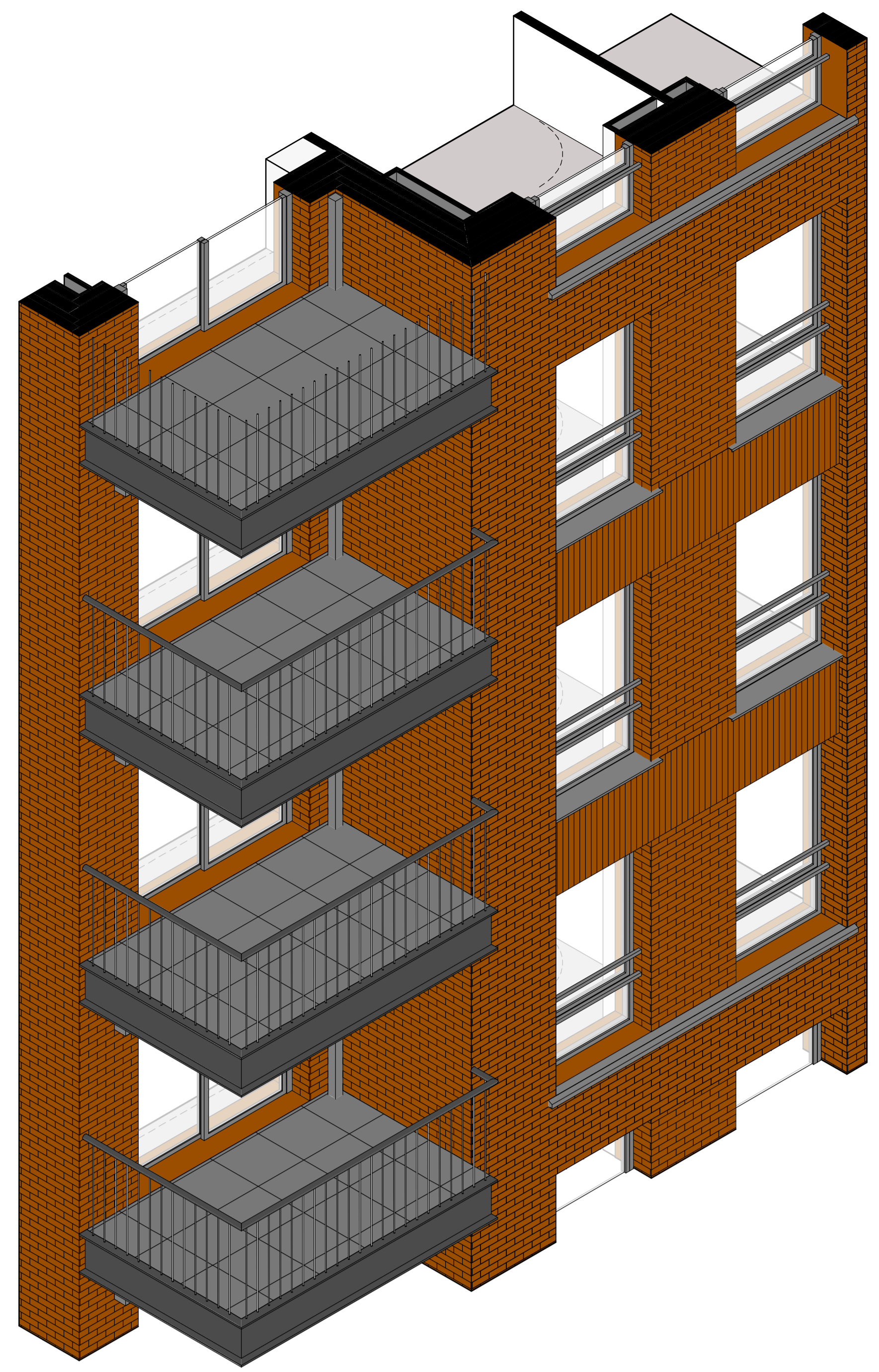
1 Plan
1 : 50



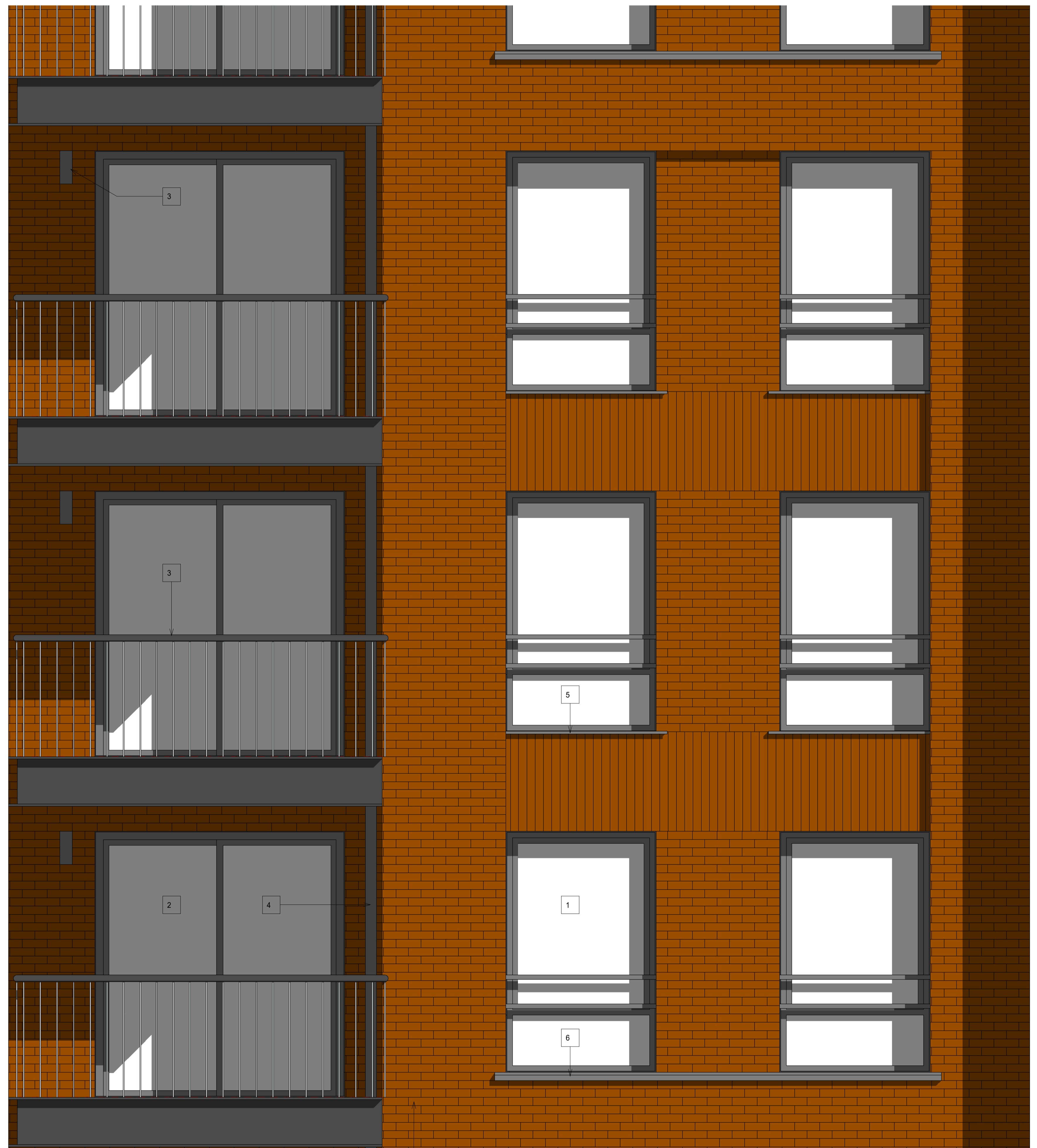
3 Elevation
1 : 50



4 Section
1 : 50



5 3D View

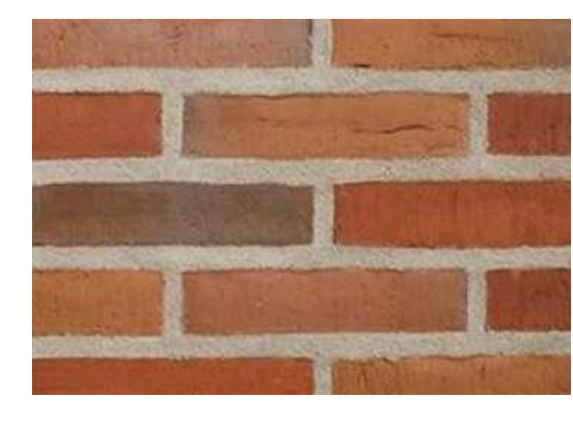


2 Elevation
1 : 20

1. Inward opening windows – RAL 7016
2. Sliding patio doors – RAL 7016
3. Steel balconies and balustrades – RAL 7016
4. Aluminium rainwater pipes – RAL 7016
5. Aluminium cills – RAL 7016
6. Precast concrete cills
7. Precast concrete capping
8. Red Brick façade – Hurstwood Multi
9. Dark Grey Brick façade – Brockleys Synthesis S14
10. Curtain walling - RAL 7016
11. Base Spandrel panel - RAL 7016
12. First floor glass spandrel
13. Louvres – RAL 7016
14. Solar shading – Corten steel
15. Facing panel – perforated Corten steel
16. Commercial entrance canopies – Corten steel
17. GRC panelling and entrance porcos
18. Retained façade – existing brick wall
19. Steel Portico – RAL 7016
20. Balcony divider - Steel framing, RAL 7016
21. Balcony light - RAL 7016
22. Column cladding - RAL 7016

MATERIAL PALETTE

PRIMARY FAÇADE = RED BRICK



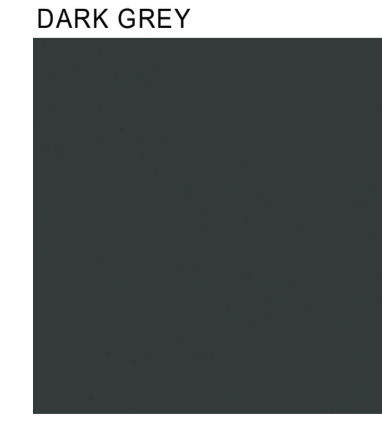
Hurstwood Multi - UK BRICK
Watermark facing side

SETBACK FAÇADE = DARK GREY BRICK



BROCKLEYS SYNTHESIS S14
DARK GREY MORTAR

METALWORK



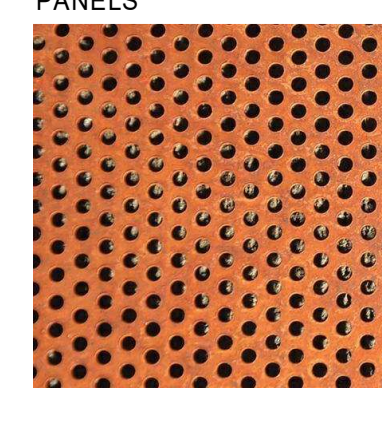
RAL 7016
BALCONY FASCIA
BALCONY FRAMES
BALUSTRADES

SOFFITS



Integron E2325 - Y2303
Soft-steel matt

PERFORATED CORTEN PANELS



BALCONY LIGHT



Rev	Description	Date	Dr	App
C2	Minor amendments	01-06-2021		
C1	First Issue	30-04-21		

created by	TS	checked by	KL
date issued	30-04-2021	approved by	



Southern Housing Group

49 - 53 Glengall Road

Bay detail 08

drawing number: 2020.000475.000
GLE-AHR-B1-ZZ-DR-A-20908

This drawing is to be used in conjunction with all related drawings. All dimensions must be checked and verified on site before commencing any work or producing shop drawings. The contractor should be notified immediately of any discrepancy. This drawing is copyright and remains the property of AHR.