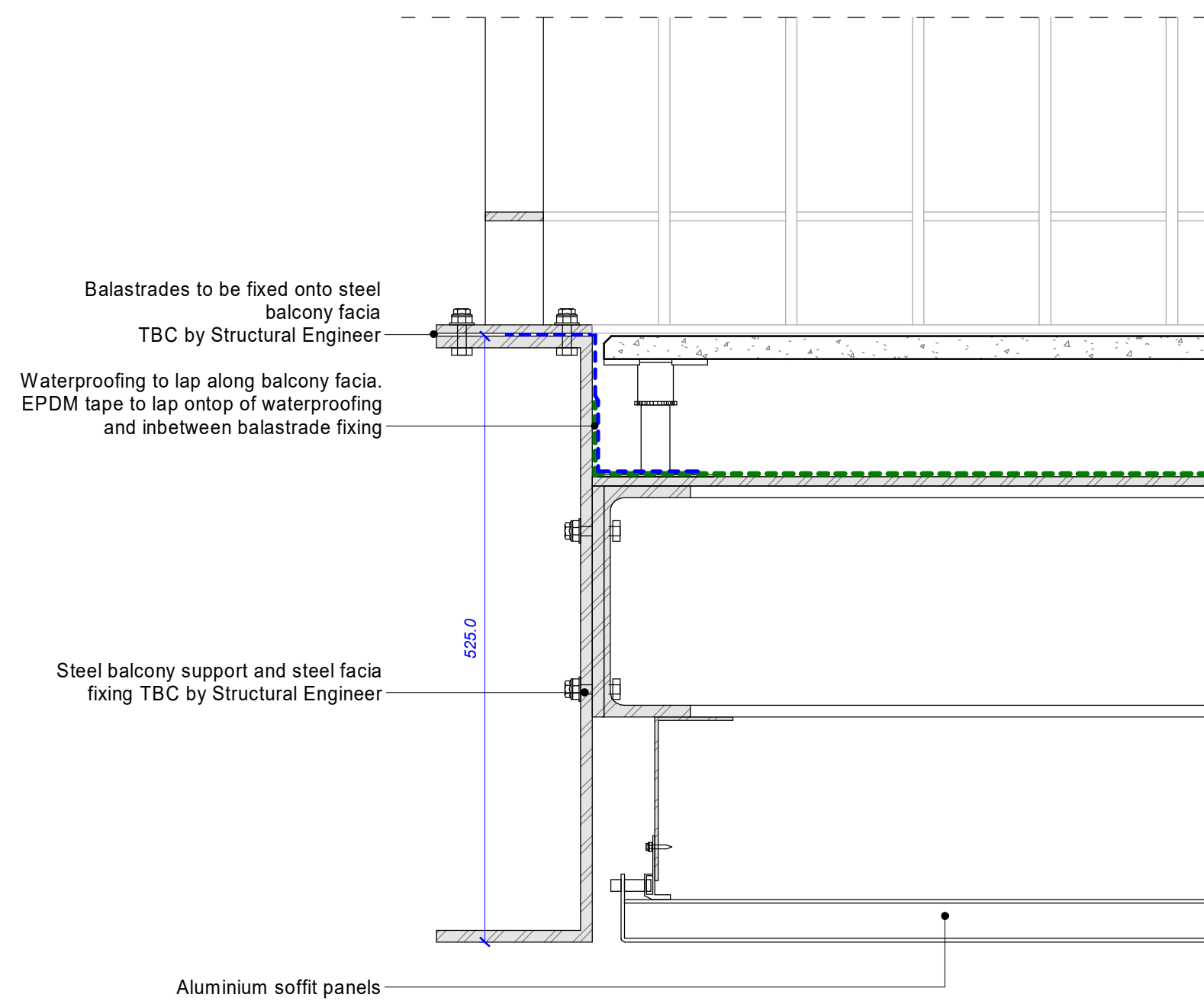
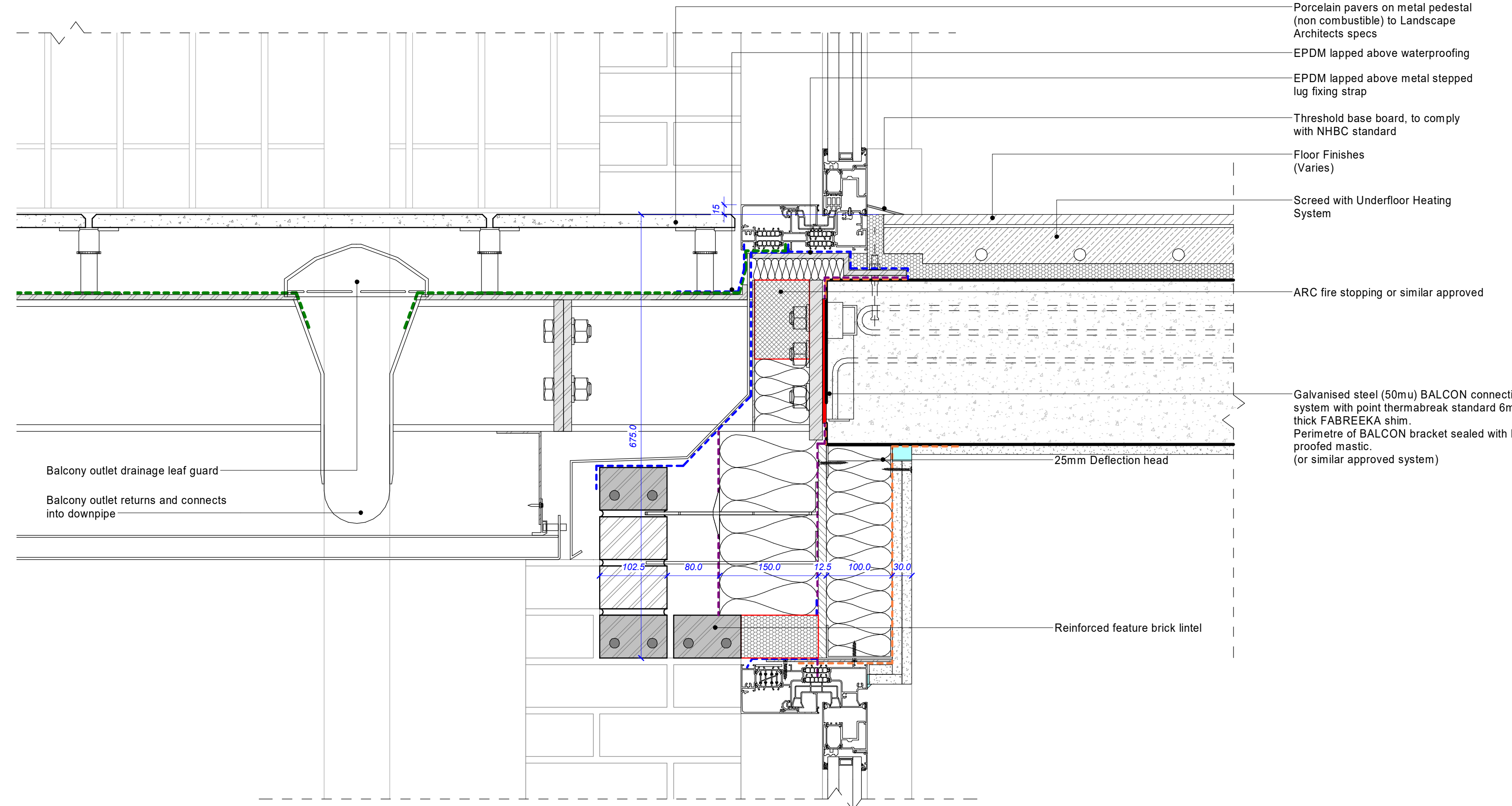
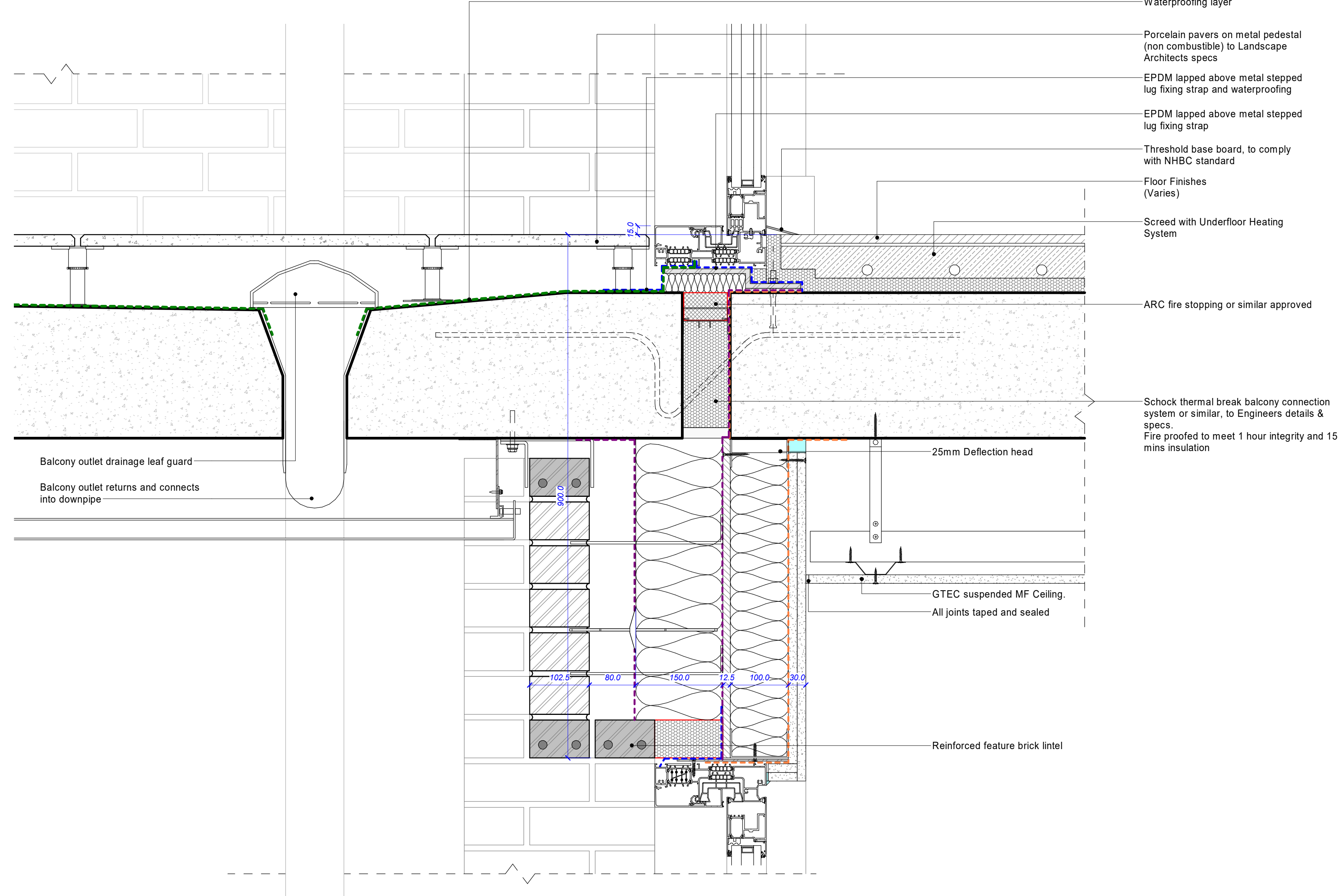


**Typical Concrete Balcony Type**  
(note, more brick courses occur to soffits of Level 5 & 6 balcony on cores A, B & C, as shown)



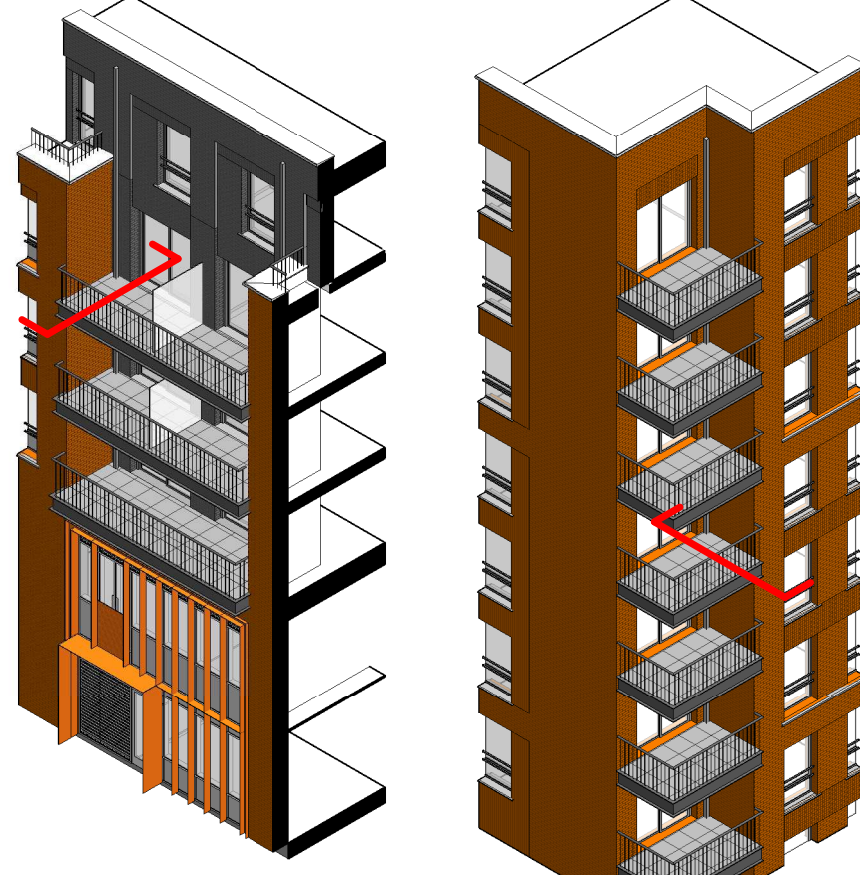
**Typical Steel Balcony Type**  
(note, more brick courses occur to soffits of Level 5 & 6 balcony on cores A, B & C)



**Disclaimer**

1. Do not scale from this drawing.
2. This drawing is to be printed in colour.
3. Figured dimensions are taken to structure unless indicated otherwise
4. All dimensions to be checked on site prior to commencement of work
5. Drawing to be read in conjunction with all other architect's drawings, consultant's construction notes, specifications and employer's requirements where applicable. Any discrepancy must be brought to the attention of AHR. In doubt, ask. Any modification to this drawing must be carried out by AHR. Please obtain permission before copying.
6. Where method of construction incorporates timber and / or light gauge steel frame, all elements of framing including stud locations, noggin, sheathing, lintels, trusses and wind bracing to be to manufacturer's design, details and specifications.
7. All structural elements are shown indicatively. For all elements of structure refer to structural engineer's and specialist sub-contractor/ fabricator's design, details and specifications.
8. All mechanical and electrical elements are shown indicatively. For M&E installations and services refer to building services engineer's and specialist subcontractor's design, detail and specifications

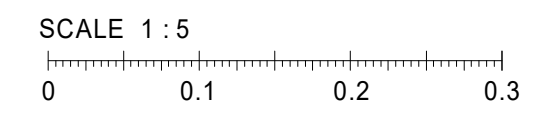
**Typical Location Key**



Core A location - Concrete Balcony Core D location - Steel Balcony

**Detail Legend**

- Breather Membrane Layer - Cortex 0220 FR Class A1 Breather membrane or similar approved
- Vapour Control Layer (VCL) - Cortex non combustible VCL or similar approved
- Waterproofing Layer - Bauderflex system or similar approved
- Vapour Control Layer (VCL) - Bauderflex system or similar approved
- EPDM Layer - Cortex 0500FR Class B EPDM or similar approved
- Water Flow Reducing Layer (WFRL)
- Fire Stop/Barrier
- Cavity Closure/Barrier



C1	Initial Issue	Date 1	TS	KL	
Rev	Description	Date	Dr	App	
original by	Author	date created	03/23/21	approved by	Approver

**AHR**

AHR London Ltd  
5-8 Hardwick Street  
London  
EC1R 4RG  
United Kingdom

T +44(0)20 78379789  
E london@ahr.co.uk  
www.ahr.co.uk

client name	Southern Housing Group		
project	Glengall Road		
drawing	Balcony Details		
computer file	C:\Rev\Projects\GLE-AHR-B1-ZZ-M3-A-2020_Building Model	plot date	30.04.2021
project number	2020.00475.002	scale	1 : 5 @A1
drawing number	GLE-AHR-B1-ZZ-DR-A-21105	rev	C1 Info

This drawing is to be read in conjunction with all related drawings. All dimensions must be checked and verified on site before commencing any work or producing shop drawings. The originator should be notified immediately of any discrepancy. This drawing is copyright and remains the property of AHR.