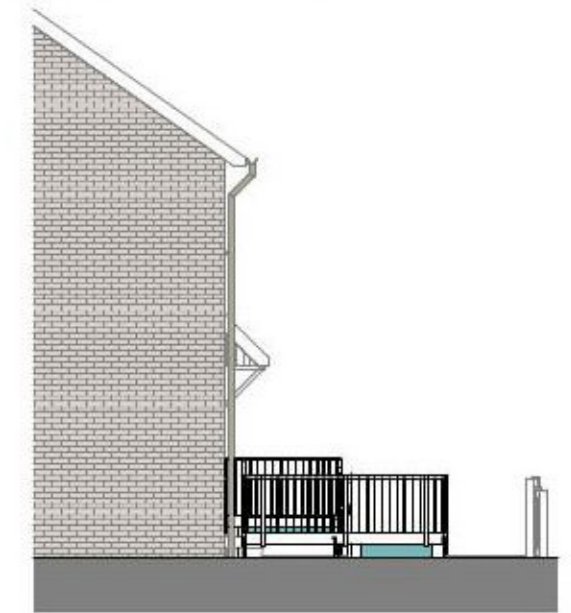




Revision Schedule

Number	Description	Date
A	Mid rail and flat bars either side omitted at plats	20210614

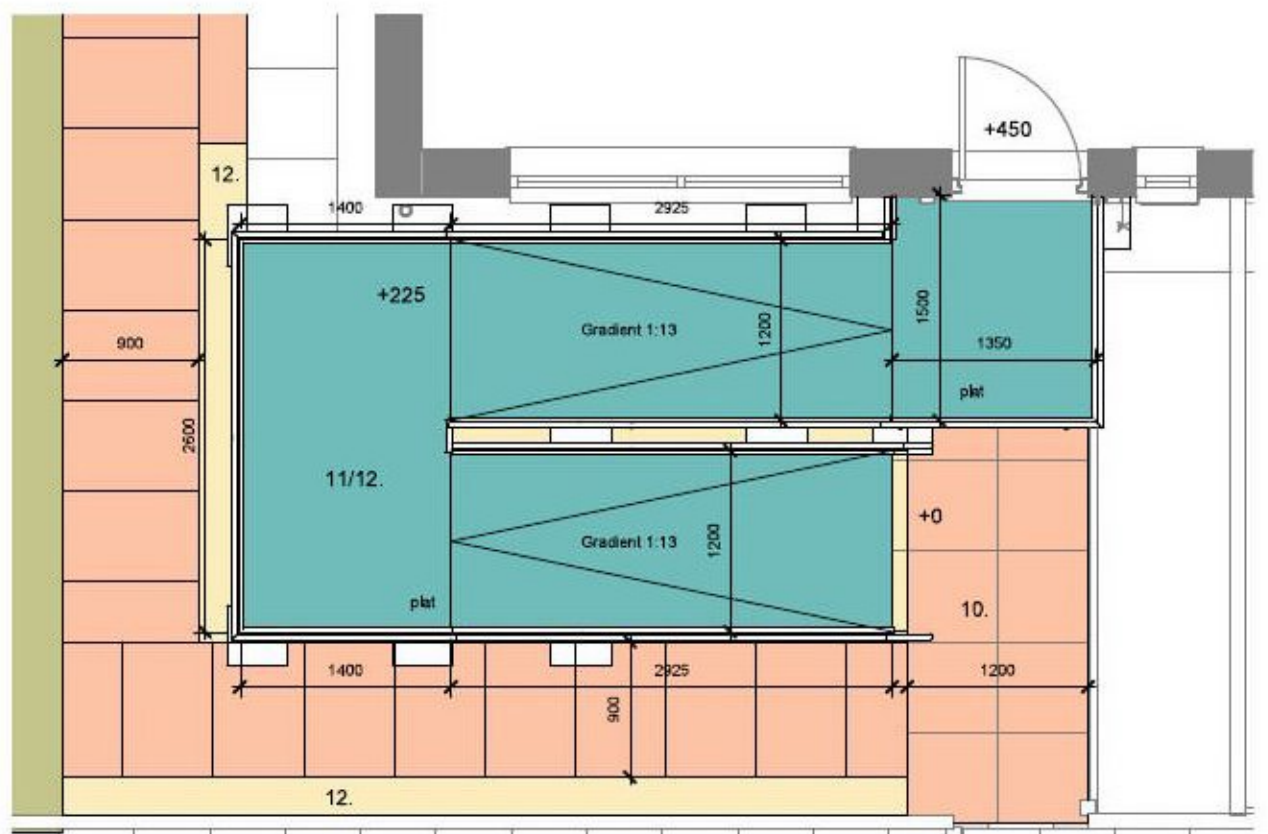
NOTES:
 Client and Occupational Therapist to be consulted and approval of the proposals obtained prior to the manufacture and purchase of any materials or components.
 Prior to any works or ordering of materials/components the effective clear opening width of the existing external door is to be checked on site to ensure it is wide enough to accommodate the clients current wheelchair.
 Tapered hardwood or proprietary metal threshold transition plates to be fitted as required.
 All levels shown are indicative only, contractor/blacksmith to confirm actual levels on site prior to the manufacture of ramps.



Proposed Part Gable Elevation
1 : 100



Proposed Front Elevation
1 : 50



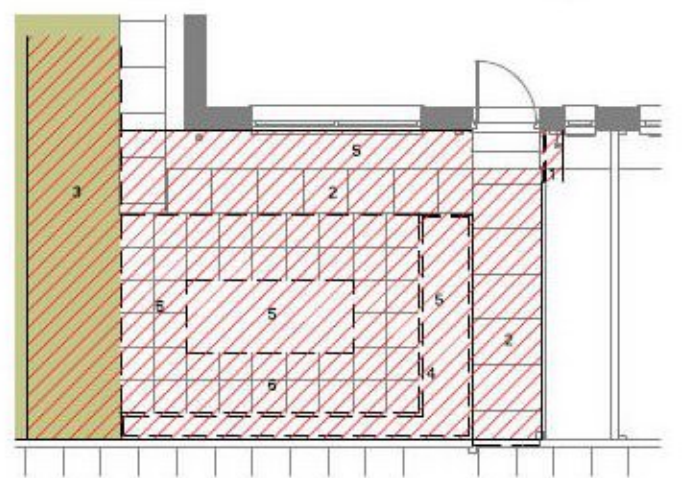
proposed part floor/garden plan
1 : 50

NOTES

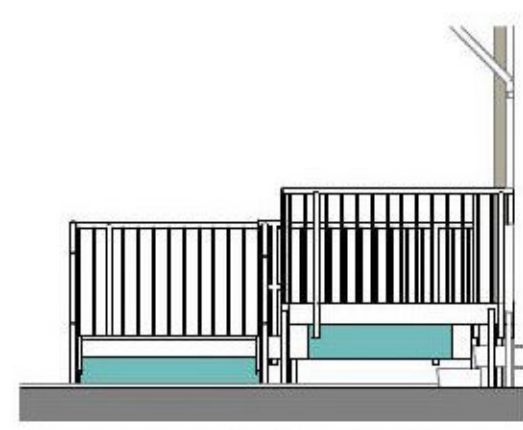
- Downtakings:
- Existing metal handrail at external door removed.
 - Existing p.c. concrete slabs at path removed.
 - Existing grass removed to allow for new ramp/decorative gravel.
 - Existing p.c. concrete pin kerbs removed.
 - Existing shrubs removed.
 - Existing p.c. concrete slabs removed in garden area.
 - Existing decorative gravel removed.

Proposed Works

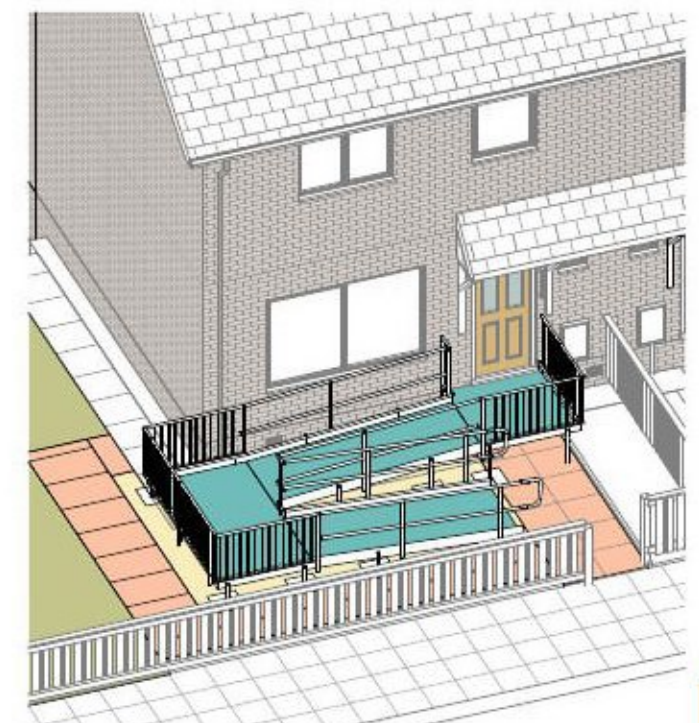
- Paths
Existing p.c. concrete slabs, or grass removed as per downtakings to be replaced with new p.c. concrete 600x600mm or 600x900mm paving slabs, on mortar bed with 8-10mm mortar joints. 25mm sand/cement bedding on 150mm min. well compacted Type 1 hardcore or decorative gravel below ramp as per note 12.
New slabs at bottom of ramp to form a 1200x1200mm min. landing.
- Ramp
New metal ramp (gradient 1:13).
Handrail & midrail - 600 & 475mm high, 40mm dia galvanised metal. Handrail to extend at least 300mm the top and bottom flight and have a scrolled or wreathed end.
Posts: 40mm dia galvanised metal at 1200mm cts, min. Posts welded to 150x60x10mm galvanised plates bolted to 150x60x10mm galvanised plates welded to galvanised metal support frame below flights/landings.
Flights/landings - 1600x1200x50mm min. clear effective width. Widths to be as shown. Anti-slip safety galvanised metal grating on galvanised metal support frame welded to 100mm high min. upstand. 50x6mm galvanised flat bar welded to upstand/above grating. Flights/landings supported on 40mm dia galvanised adjustable legs welded to metal plate and bolted to metal upstand and bottom plate secured to a level base. Existing solid bases to be inspected to ensure they are able to support the ramp and new bases in soft landscaped areas to be formed with 400x400x40mm concrete pads or p.c. concrete slabs as per note 10.
Protective Barriers - Stair, ramp, landing where there is a difference in level of 600mm or more the protective barrier is to be 1100mm high and 800mm high below 600mm. Barrier to be fitted at change of direction. 13x13mm solid MS rod vertical balusters at 100mm max. cts welded to handrail and 30x10mm MS flat bar at bottom.
Maximum gradient of flight Maximum length of flight Maximum rise
1 in 20 10m 500mm
1 in 15 5m 333mm
1 in 14 4m 286mm
1 in 13 3m 250mm
1 in 12 2m 167mm
Refer to Drg.No.1264-201 for details of standard ramp construction.
- Decorative Gravel
New decorative stone gravel (colour to be selected by client) on weed control layer below new ramp.



proposed part floor/garden plan - downtakings
1 : 100



Proposed Side Elevation (ramp)
1 : 50



3D view

planning

