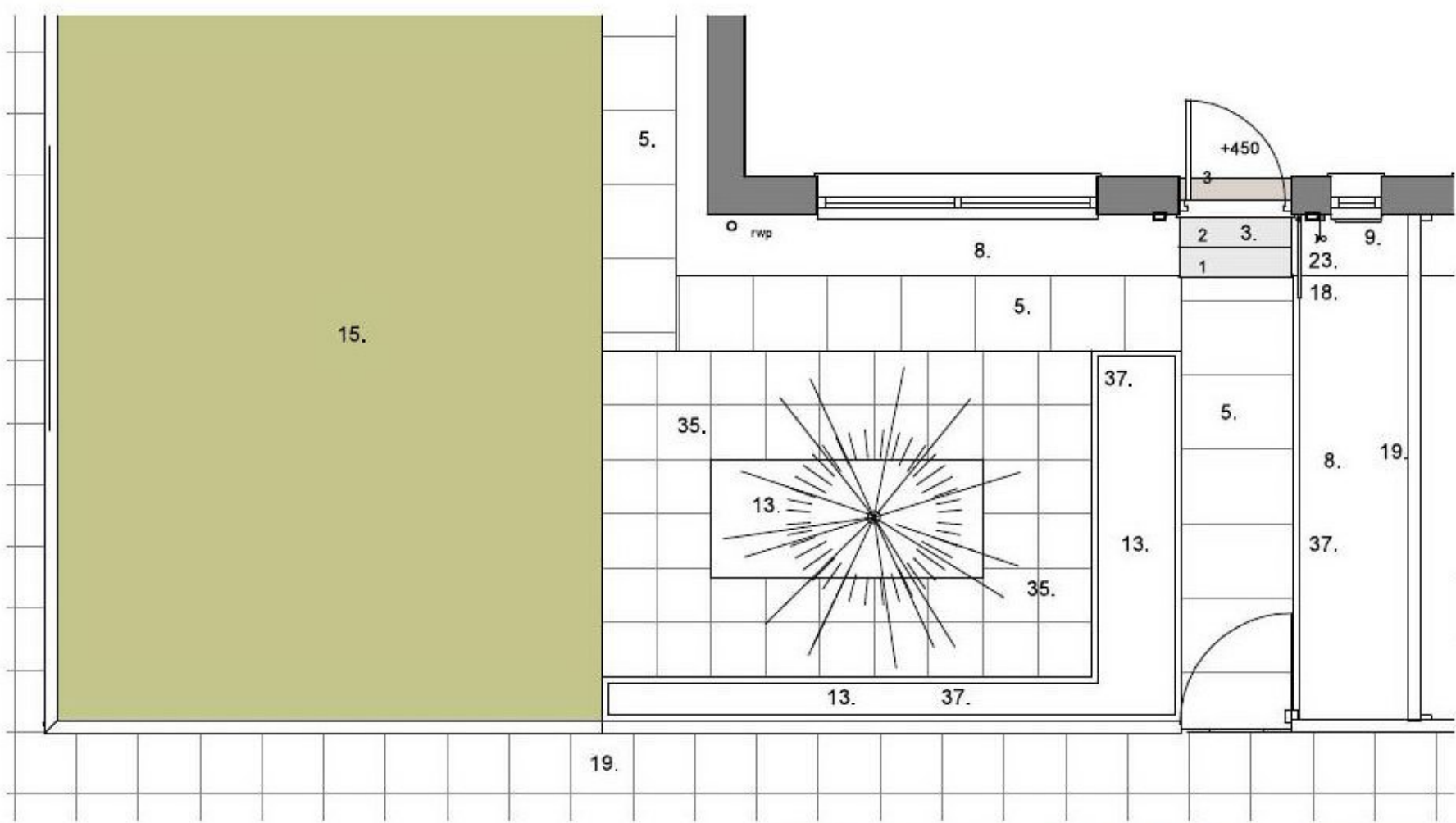




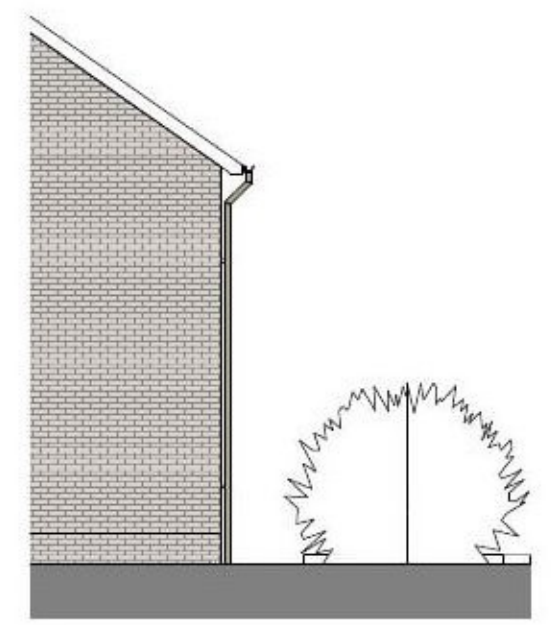
Revision Schedule

Number	Description	Date
--------	-------------	------



Existing Front Elevation

1:100



Existing Part Gable Elevation

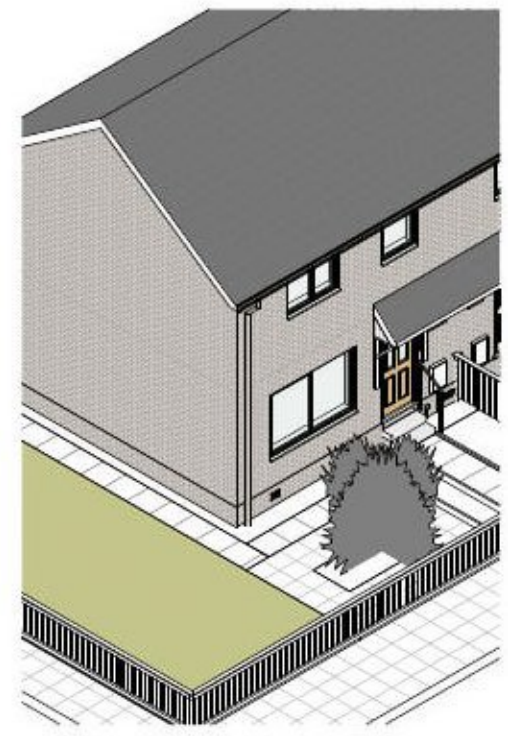
1:100

part ground floor/garden plan

1:50

NOTES:

- |  |  |
|--|--|
| 1. Two storey house  | 22. FAI  |
| 2. Single storey house   | 23. Cable TV/broadband                                 |
| 3. P.C. concrete step  | 24. External electrical socket                         |
| 4. P.C. conc. slab/facing brick step                           | 25. Rodding eye  |
| 5. 600x900mm p.c. concrete slabs                               | 26. Inspection chamber                                 |
| 6. 600x600mm p.c. slabs  | 27. Brick bin enclosure                                |
| 7. 400x400mm p.c. slabs  | 28. Wheelie Bin  |
| 8. Decorative stone chippings                                  | 29. Clothes pole                                       |
| 9. Gas meter   | 30. Hut  |
| 10. Electric meter   | 31. Greenhouse   |
| 11. Water loby   | 32. Lamppost   |
| 12. Air source heat pump                                       | 33. Block pavers                                       |
| 13. Shrubs/earth   | 34. External tap                                       |
| 14. Tree   | 35. 450x450mm p.c concrete slabs                       |
| 15. Grass  | 36. Whirlie gig  |
| 16. Tarmac   | 37. P.C. Concrete kerb                                 |
| 17. Concrete   | 38. Grab rail  |
| 18. Metal handrail   | 39. Timber edge board                                  |
| 19. 800mm approx. high vertical timber fence & timber posts.   | 40. Timber low level horizontal fence boards and posts |
| 20. 900mm approx. high horizontal timber fence & timber posts. | 41. 600x760mm p.c. conc. slabs                         |
| 21. 900mm approx. high vertical timber fence & timber posts.   | 42. Drainage gully                                     |



3D view

planning



project  
1264 - Ramps/Graded Steps at Various  
Addresses for DGHP

client  
DGHP/City Building

drawn by  
aw

date  
May 2021

scale @ A3  
As indicated

title  
9 Lochar Court, Dumfries - Existing Floor  
Plan, Elevation & 3D View

dwg. no.  
1264 - 355

rev.

J:\Company Shared Folders\Project Dwg\1264 - Porch Repairs Dumfries and Galloway for City Building\9. REVIT\Current\1264 - ramps - 9 Lochar Court, Dumfries - rev A.rvt