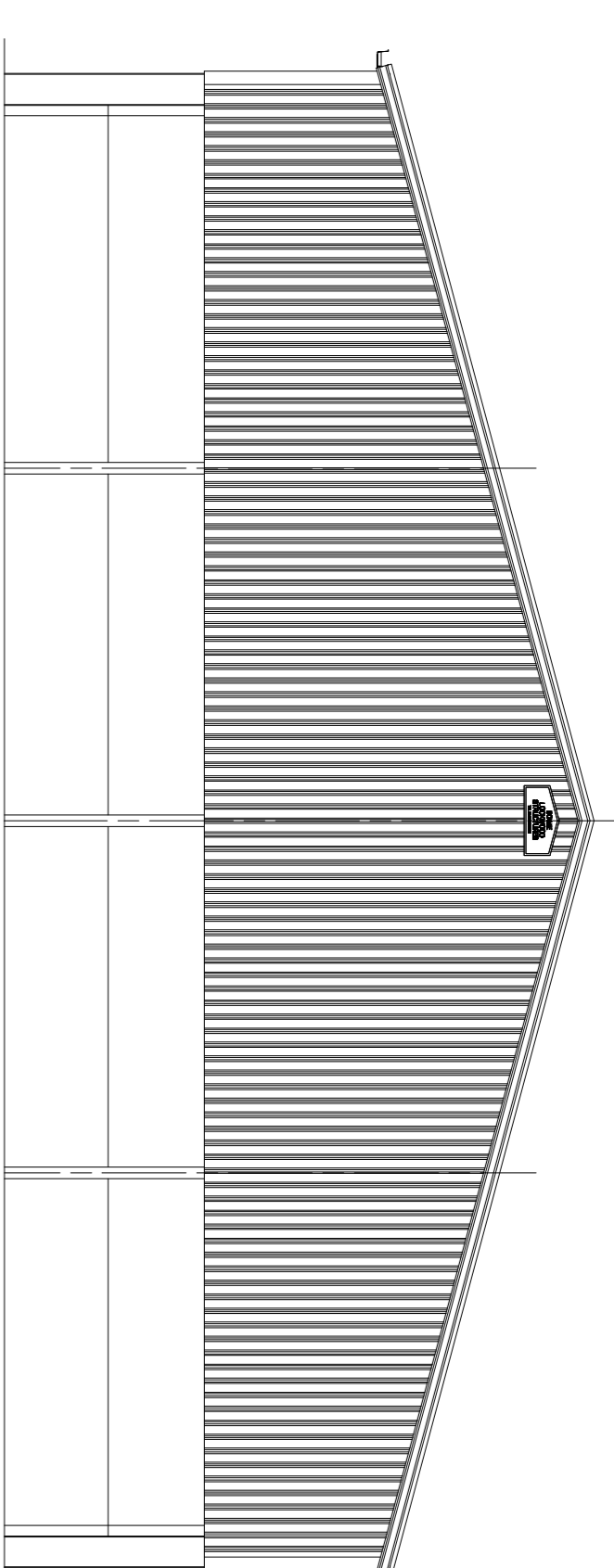
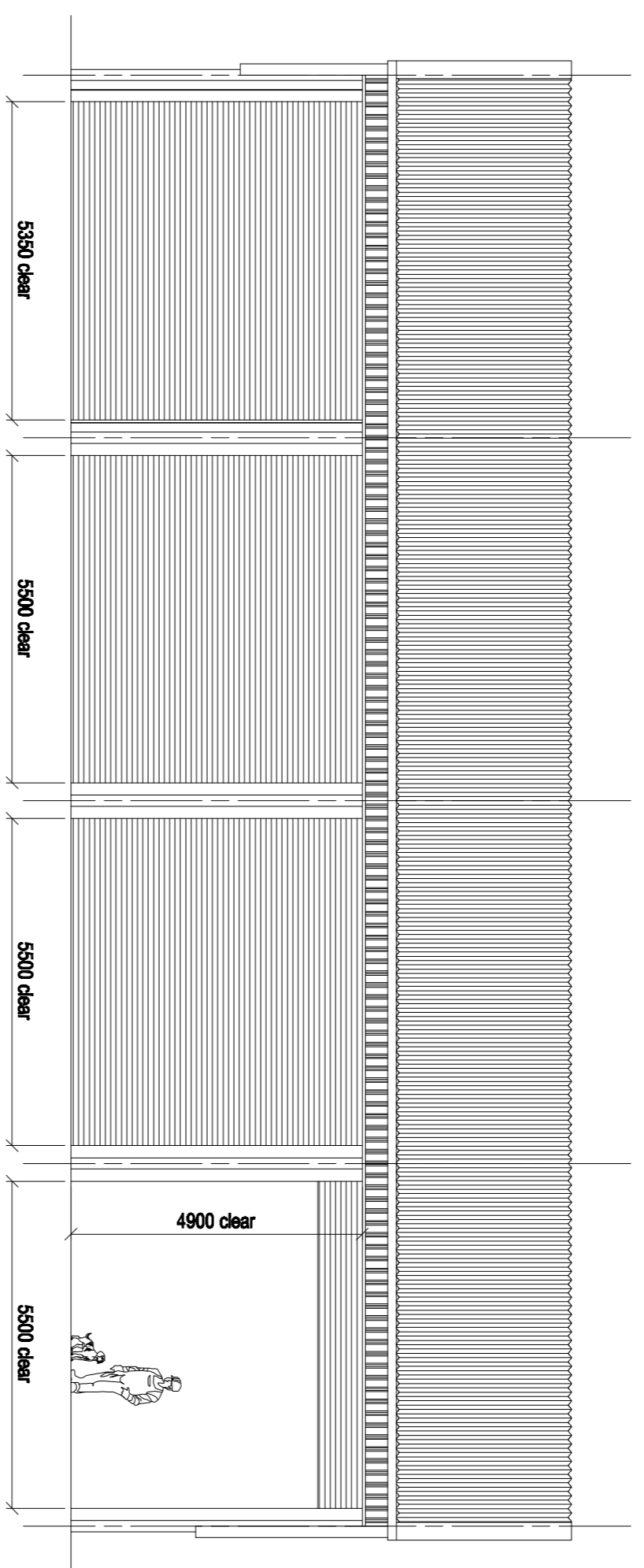




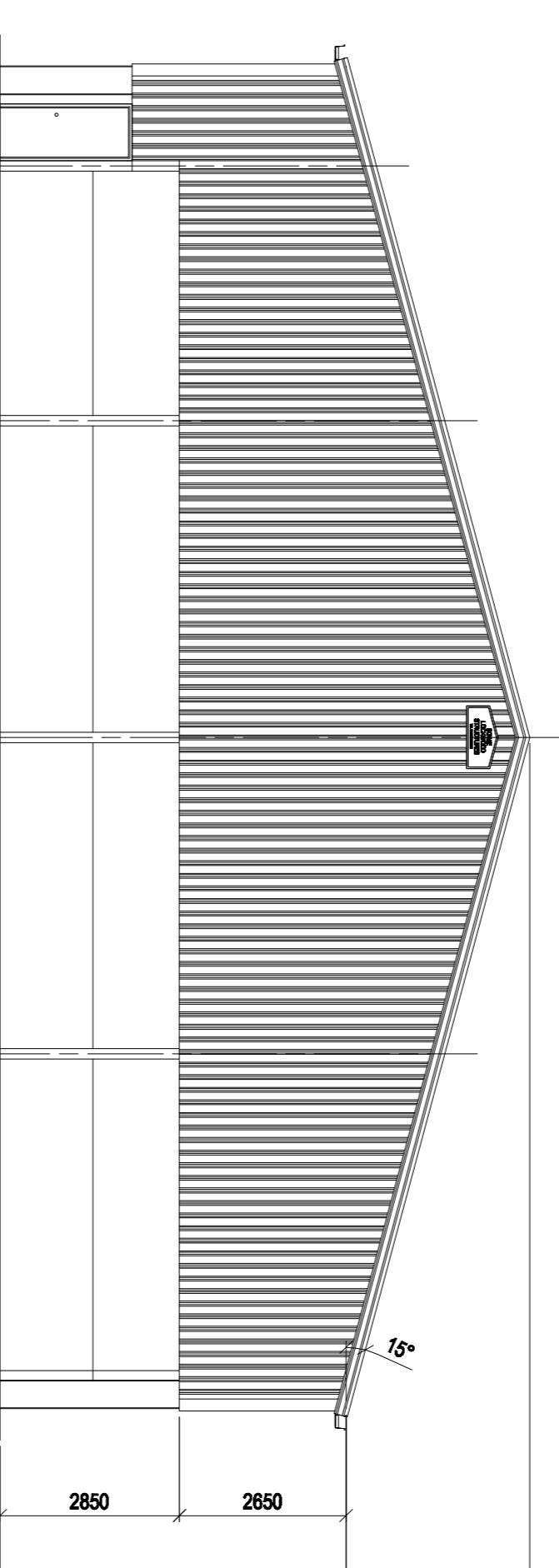
Elevation T'



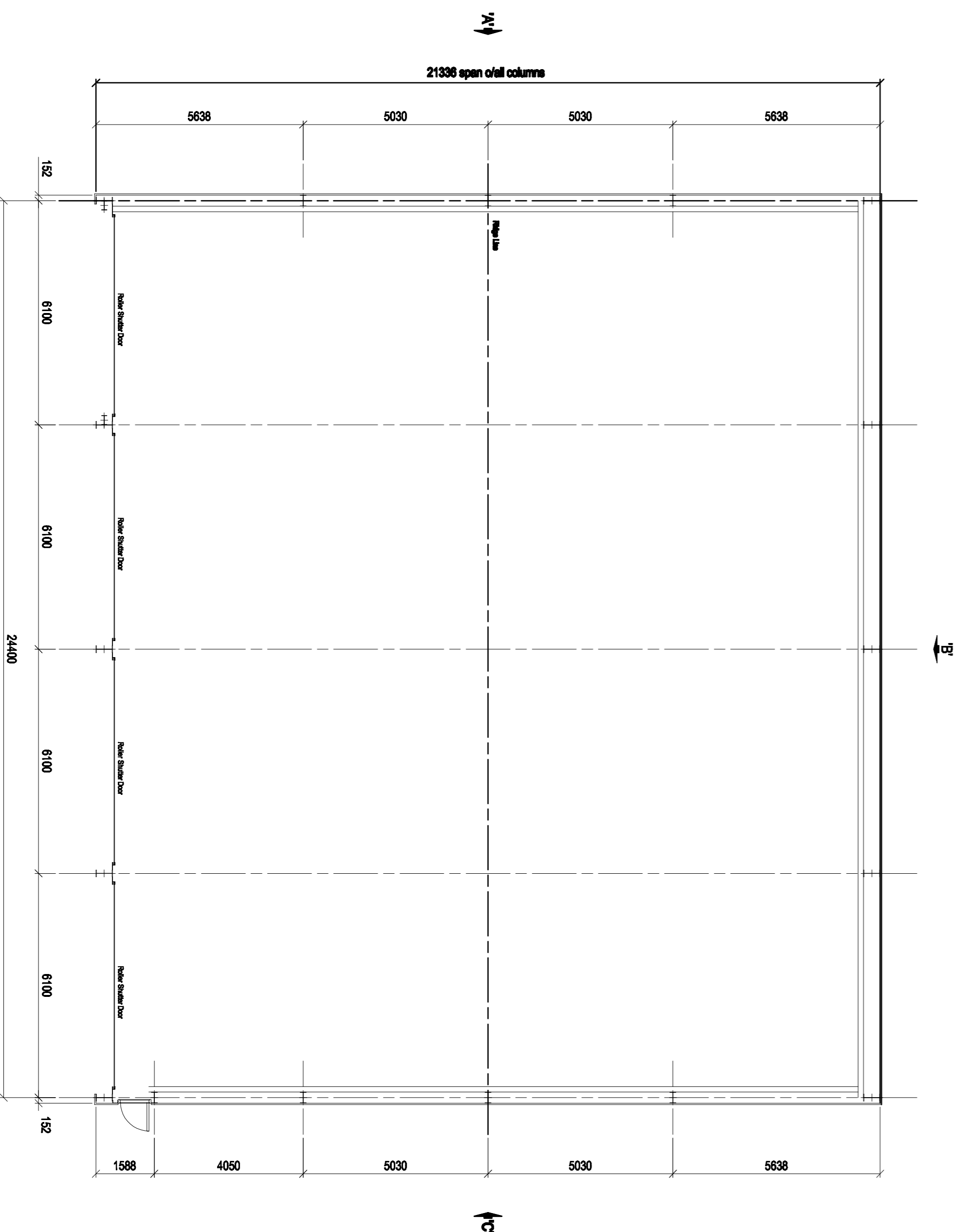
Elevation Y'



Elevation T''



Elevation C'



- Roof Cladding:-** Natural Grey Big Six fibre cement sheeting incorporating close fitting ridge, eaves tiles.
- Wall Cladding:-** Juniper Green 12B29 plastisol coated steel sheeting down to 2650mm below eaves.
- Wall Panels:-** 150mm thick pre-stressed concrete panels 3000mm high (2 x 1500). Inclined heavy duty galvanized steel spill flashing fitted between concrete panels and vertical cladding.
- Doors:-** 4 no. galvanized, electrically operated, roller shutter doors.
1 no. steel framed 10 point locking security / personnel door.
- RW Goods:-** 2 no. runs of 200mm (8") galvanized steel gutters, with 2 no. stacks of 150mm Ø PVC RWP per stretch.
- Steel Finish:-** Painted, dark green hi-build zinc phosphate primer, DF775J.



BOWIE LOCKWOOD STRUCTURES LTD
 FARM & INDUSTRIAL BUILDING SPECIALISTS
 Coombe Abbey Farm, Coombe Fields Road
 Billesley, Coventry CV3 2SX
 Phone: 0845 2572343
 Fax: 02476 456499
 e-mail: sales@bowielockwood.co.uk



Client: Richard Beldam Farms Ltd
 Sars Lodge Farm
 Broadway
 Worcestershire
 WR12 7NH

Project: Fertilizer & Machinery Store

Scale: 1:100
Drawn: BT
Check: BT
Date: 30-03-21

Job No.: 2143
Dwg. No.: 101
Rev.:

| Revision | Date |
|----------|------|
| | |

Details