

Materials

Acoustic Wall Panels

The acoustic panels specified are nominally 80mm thick. Each panel is a composite construction of 1.5mm thick galvanised sheet steel outer skin, with a 65kg/m3 density unfaced mineral wool acousitic absorbent infill and inner skin of 0.7mm thk 32% open area perforated galvanised sheet steel.

Ingress of moisture, oil mist or airbourne particles into the mineral wool infill is prevented using a 23 micron thick clear polyester membrane.

All materials used in construction of the acoustic hardware conform as appropriate, to the current British Standards.

Assembly

Panels are assembled together by means of fabricated panel joiners with a 3mm thick nitrile seal along all mating faces. Panel accessories are fixed in position by use of self tapping screws.

Personnel/Access Doors

The door thickness and construction shall be similar to that of the acoustic weather panels but with a 2mm solid inner and outer skins, complete with door frame, hinges and refrigeration type door handle with internal panic push release knob.

The acoustic sealing is provided by a soft bulb rubber around the perimeter of the door.

Enclosure Steelwork

All mildsteel section frames to be hot dipped galvanised after fabrication.

Fabricated Skid Unit

All mildsteel sections to have manual surface preparation to ST3 BS EN ISO 8501-1(2007) BS7079: Part A1 (1989), Zinc Phospahte Epoxy Primer to 75um DFT and a top coat finish of Arcrylic Urethane to 50um DFT.

Cladding

Cedral Click or Lap
Fibre cement weatherboard
Finish to be decided

Weather Roof Cladding & Flashings

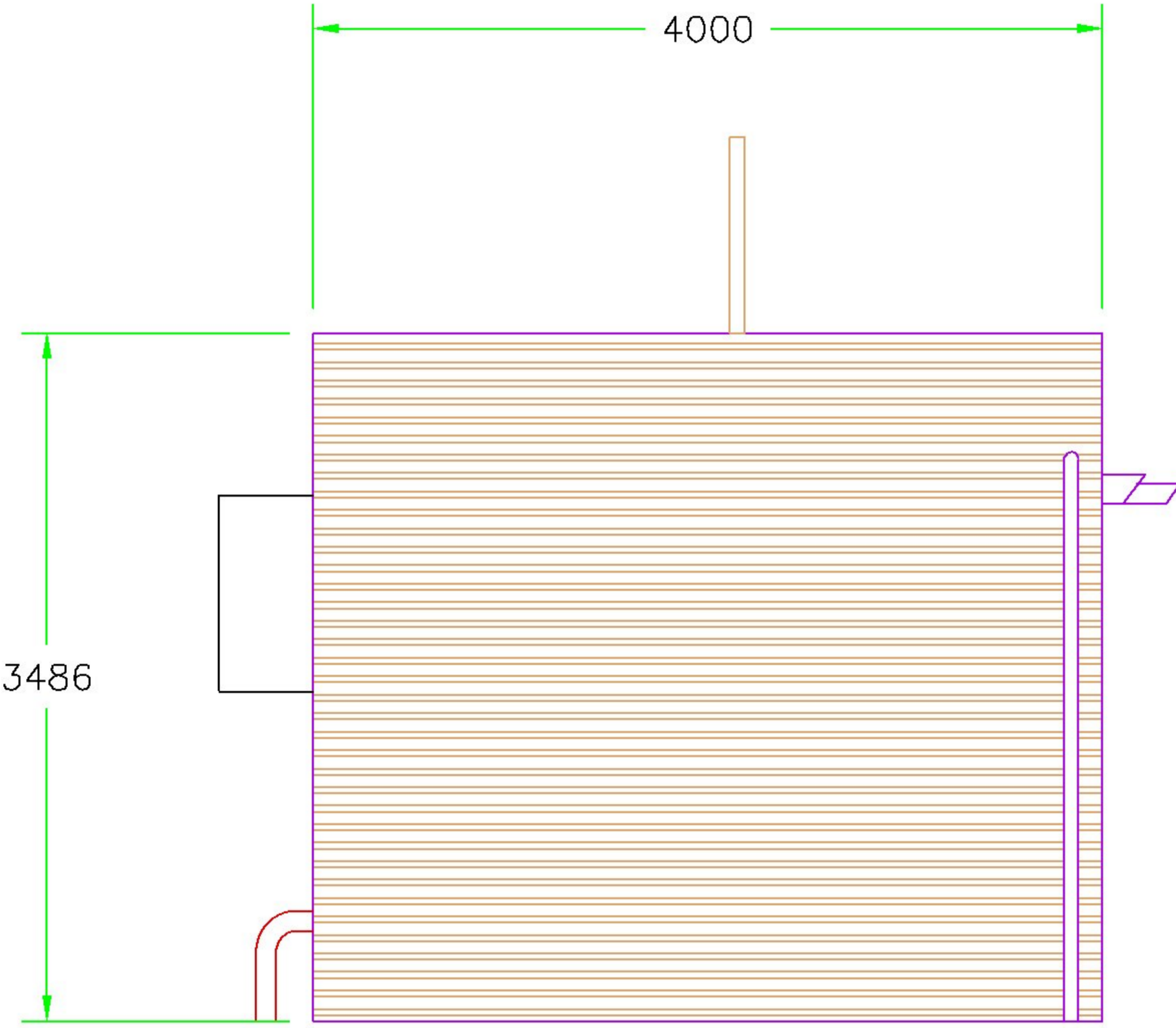
Standard CR32/1000 x 0.7mm profiled roof sheet with Plastisol finish. Weather roof flashings same material as roof sheet.

Painting

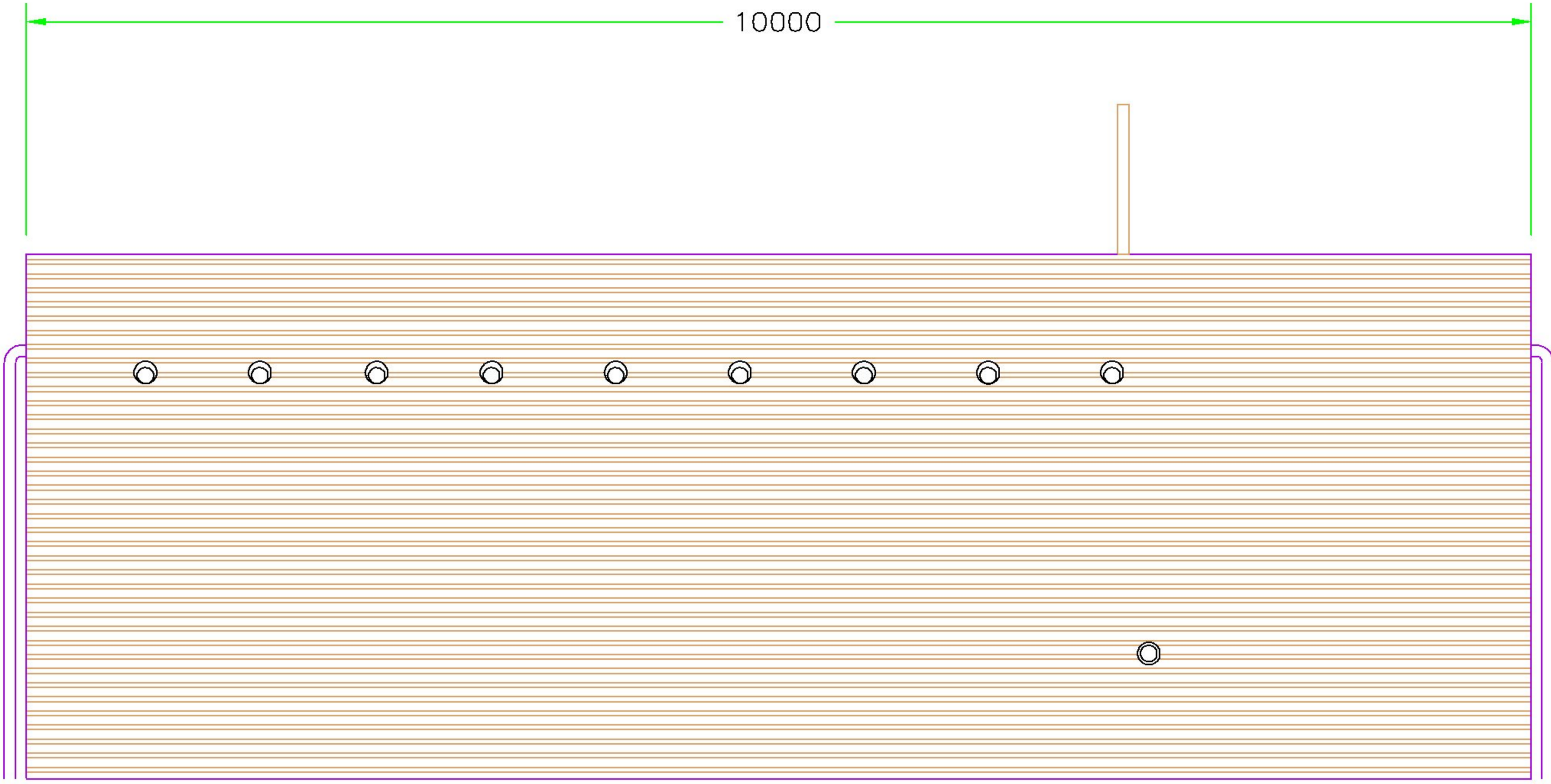
External surfaces of outer skin of wall panels and trims treated with powder coated paint to a colour of ones choice giving a high quality appearance and excellent durability.

Colour

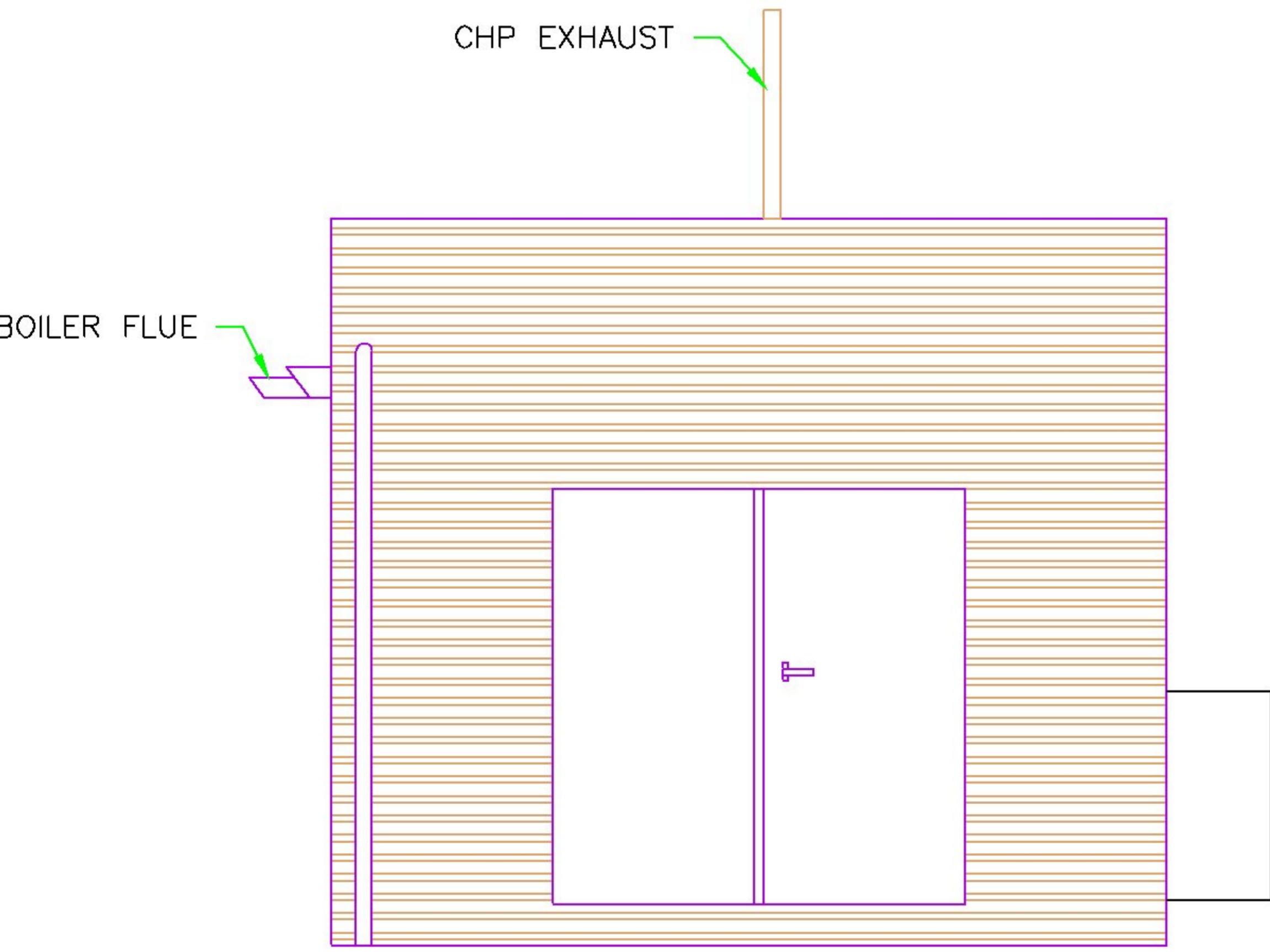
To be confirmed



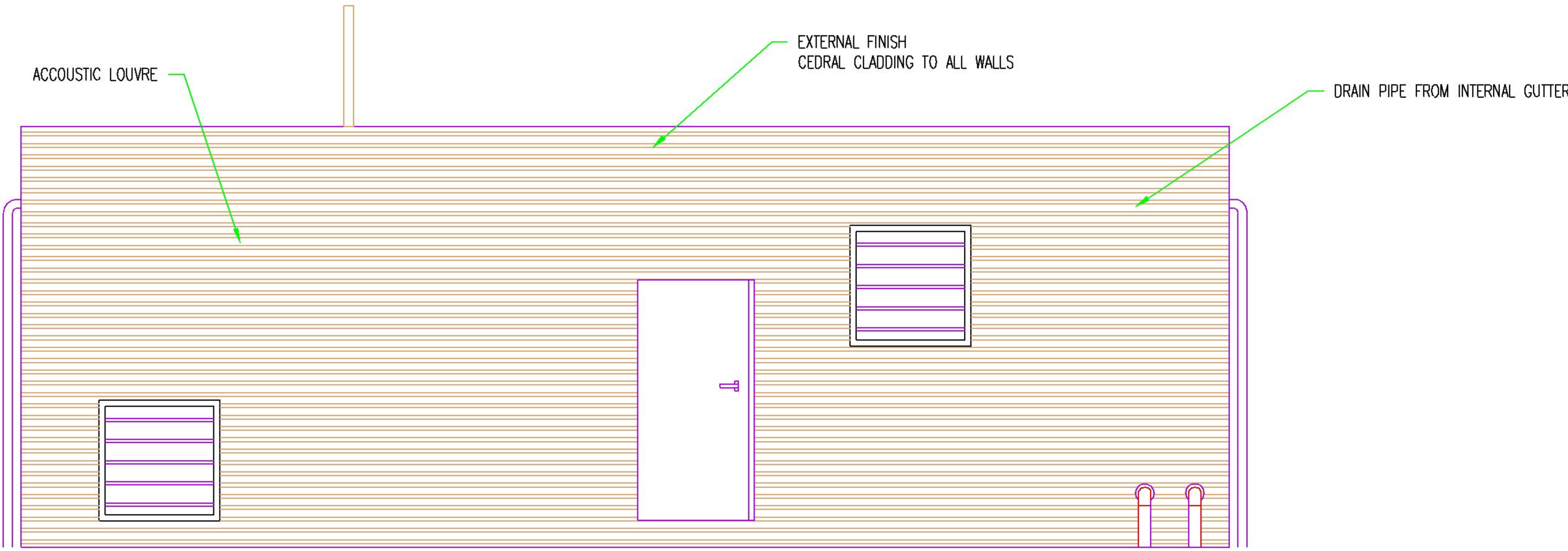
NORTH ELEVATION



WEST ELEVATION



SOUTH ELEVATION



EAST ELEVATION

Rev	Date			Subject	Project	<div><div><div>I</div><div>E</div><div>U</div></div><div>Middle Reach, Ridley Hill Kingswear, Devon TQ6 0BY. Tel 01803 752851 info@integratedenergyutilities.co.uk</div></div>	Scale	Drawn	Checked	Authorised	A2
A	15.06.21			ABERDEEN HEAT & POWER LTD	PACKAGE BOILER HOUSE		1:50	D.P.	W.R.		
					KINCORTH DISTRICT HEATING		Date	30.03.21	Date	30.03.21	
							Drawing Number 2424115				