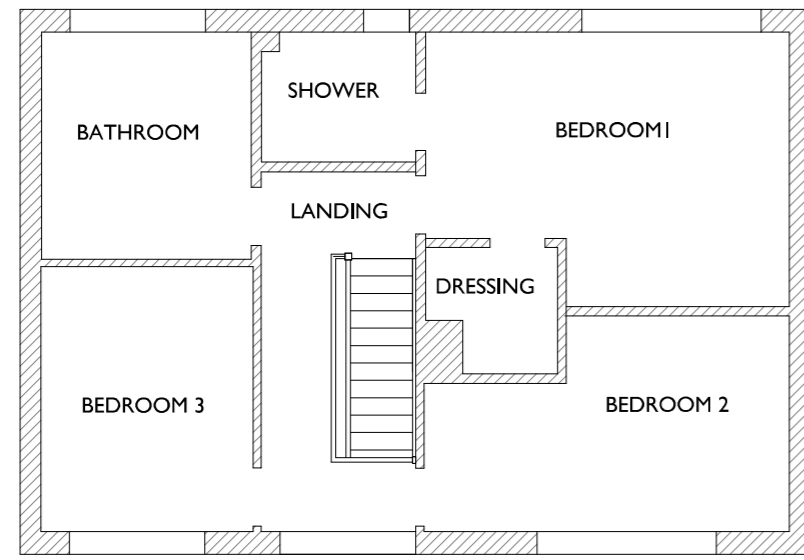
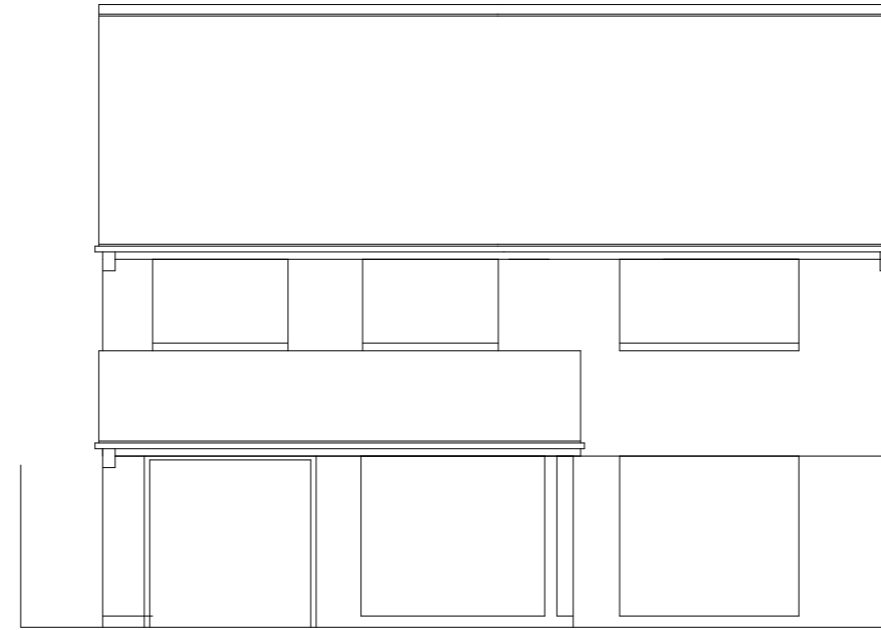


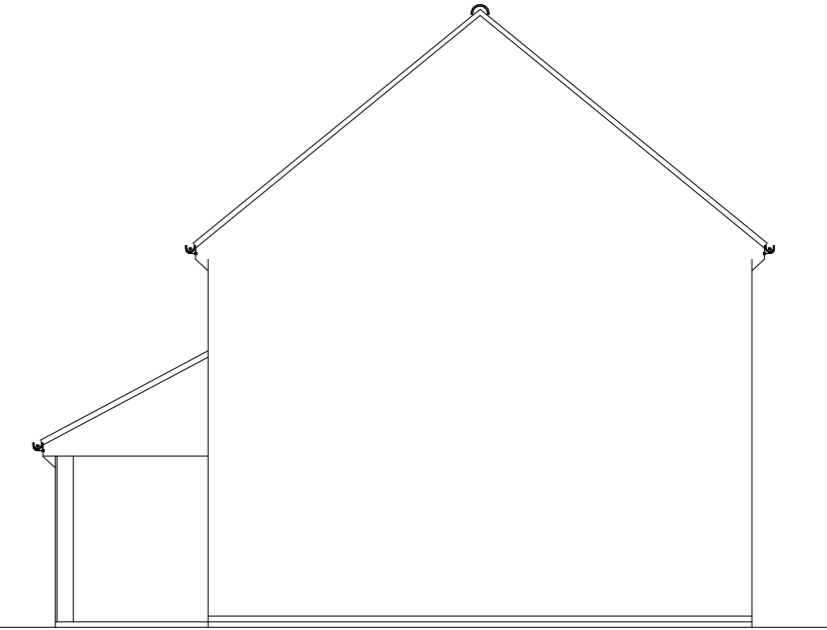
Pippins - Hale



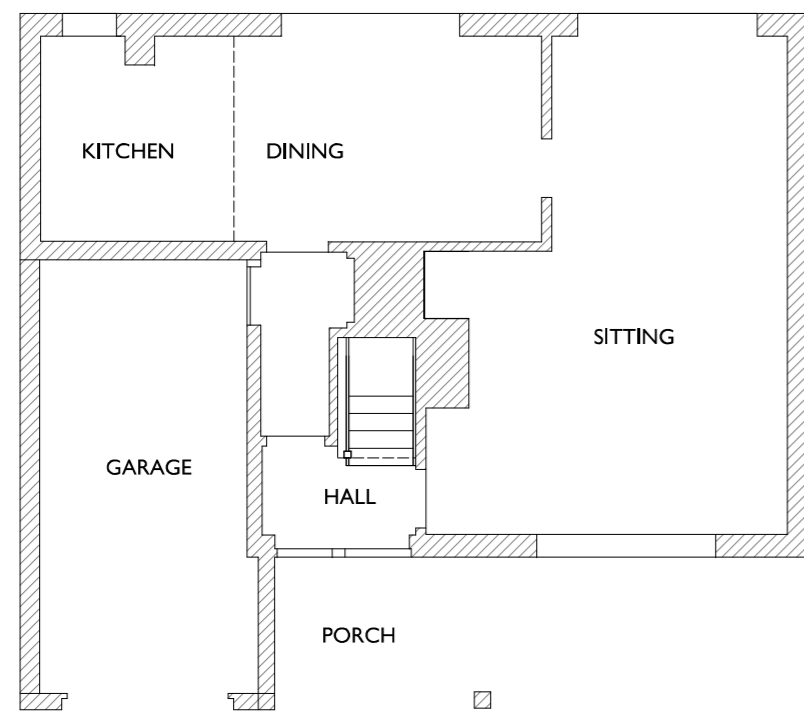
FIRST FLOOR



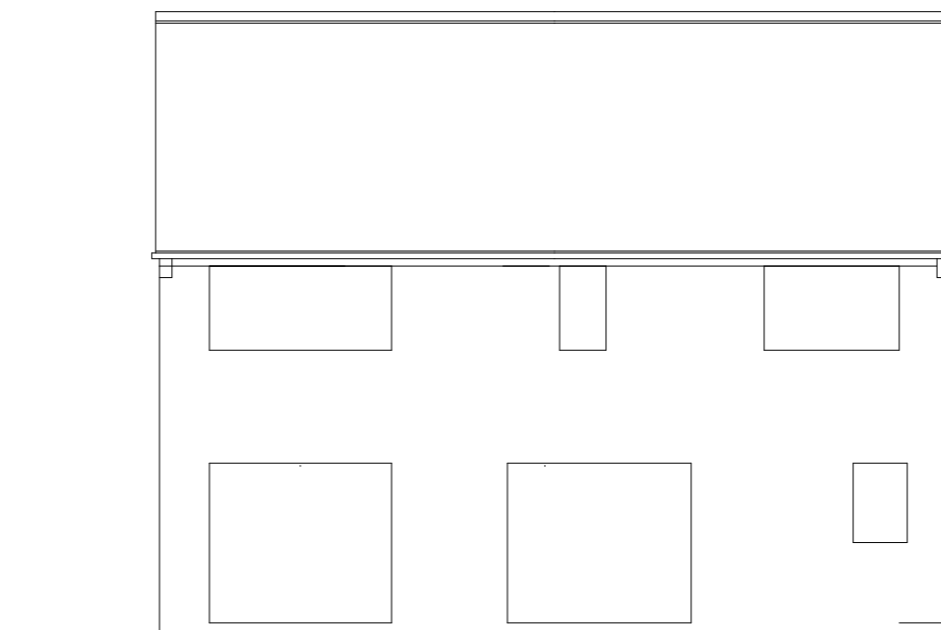
EAST ELEVATION



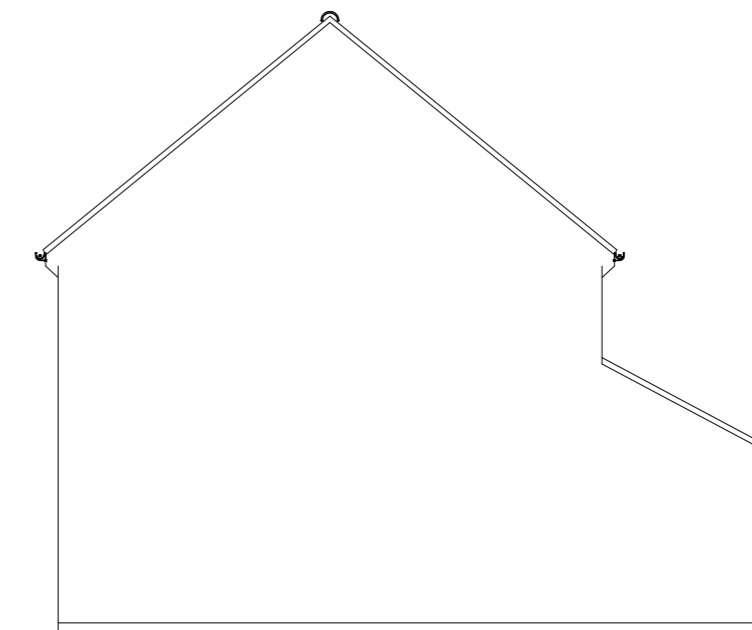
NORTH ELEVATION



GROUND FLOOR



WEST ELEVATION



SOUTH ELEVATION

Notes:

A2

REV A 17/06/21 DO NOT SCALE
REMOVED FROM COPYRIGHT NOTICE



METRES AT 1:100 SCALE

THIS DRAWING IS THE COPYRIGHT OF FAVONIUS ARCHITECTS IT MAY NOT BE COPIED, ALTERED OR REPRODUCED IN ANY WAY WITHOUT THEIR WRITTEN AUTHORITY.

PIPPINS - HALE
ENCLOSED PORCH AND
ALTERATIONS

PLANS AND ELEVATIONS
EXISTING

DWG No: 1061-20-02A

DATE JUNE 2021 SCALE: 1:100

FAVONIUS
ARCHITECTS

Tel: 01722 412 391 www.favonius.co.uk
Wyndham House, 65 The Close, Salisbury, Wiltshire SP1 2EN

PLANNING DRAWING