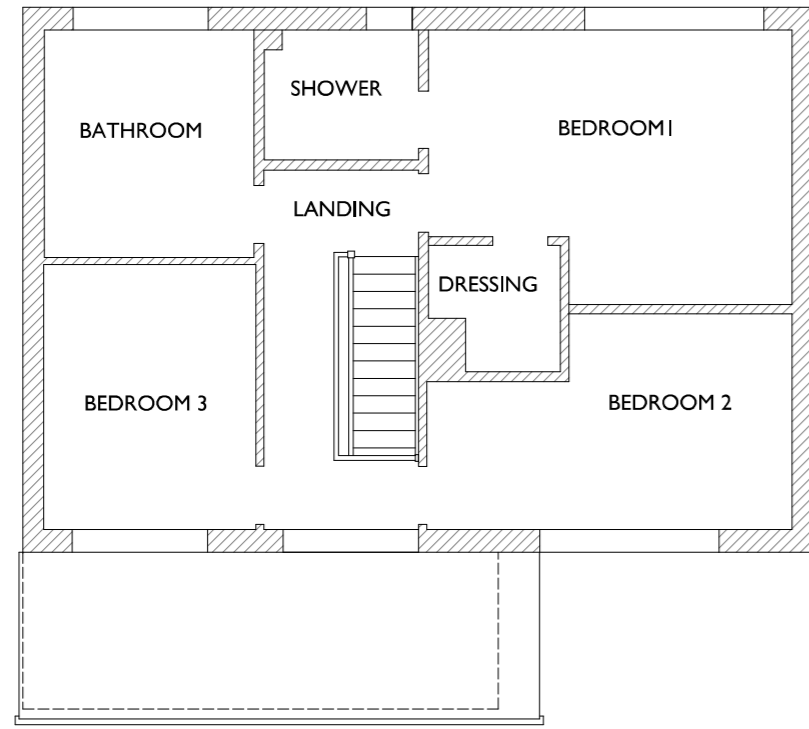
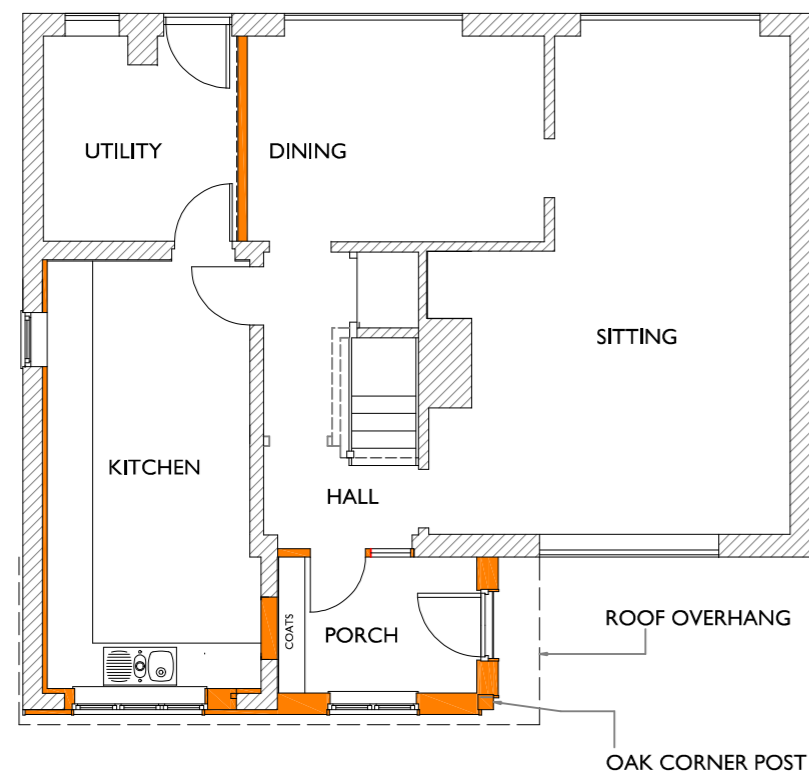


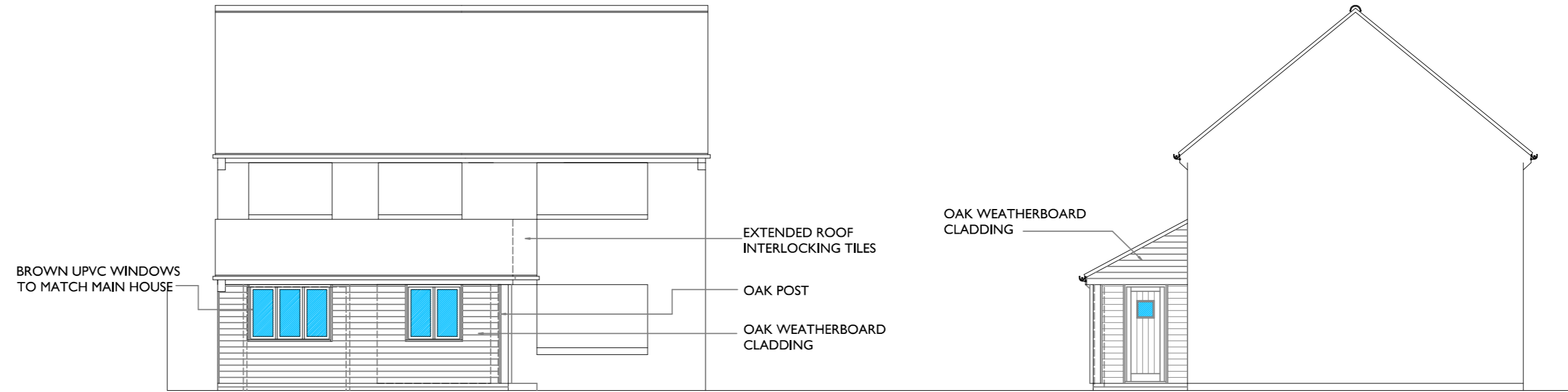
# Pippins - Hale



FIRST FLOOR

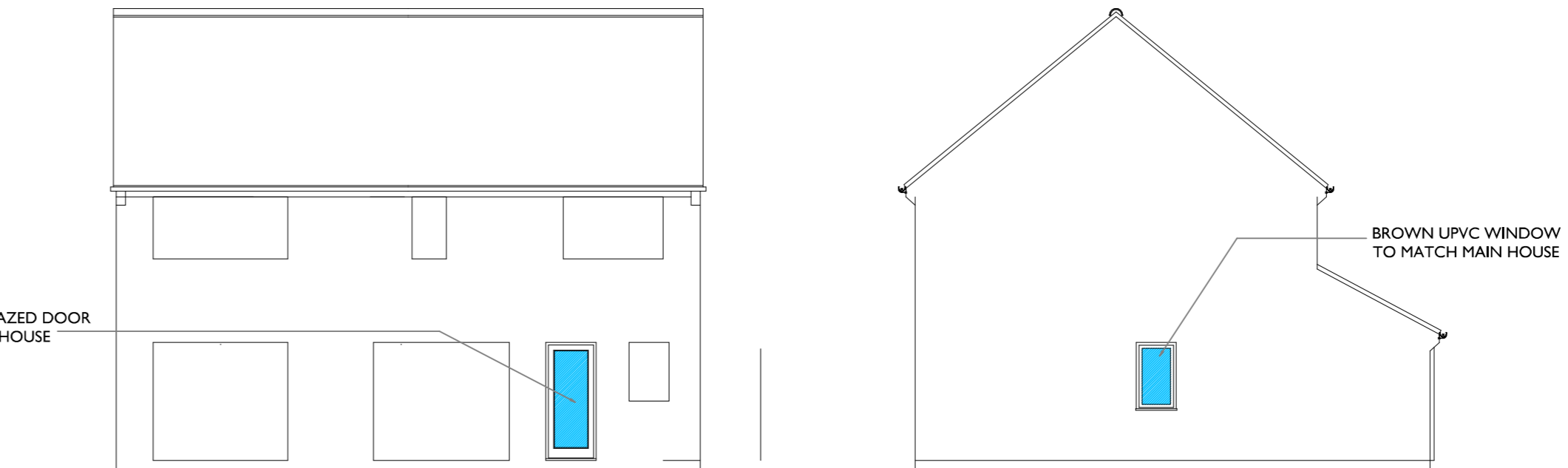


GROUND FLOOR



EAST ELEVATION

NORTH ELEVATION

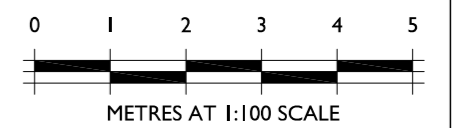


WEST ELEVATION

SOUTH ELEVATION

Notes: **A2**

REV A 17/06/21 DO NOT SCALE  
REMOVED FROM COPYRIGHT NOTICE



THIS DRAWING IS THE COPYRIGHT OF FAVONIUS ARCHITECTS. IT MAY NOT BE COPIED, ALTERED OR REPRODUCED IN ANY WAY WITHOUT THEIR WRITTEN AUTHORITY.

PIPPINS - HALE  
ENCLOSED PORCH AND  
ALTERATIONS

PLANS AND ELEVATIONS  
PROPOSED

DWG No: 1061-20-01A

DATE JUNE 21 SCALE: 1:100

**FAVONIUS**  
ARCHITECTS

Tel: 01722 412 391 www.favonius.co.uk  
Wyndham House, 65 The Close, Salisbury, Wiltshire SP1 2EN

PLANNING DRAWING