



# YORK ROAD, MAIDENHEAD

FIRE ESCAPE - DAS

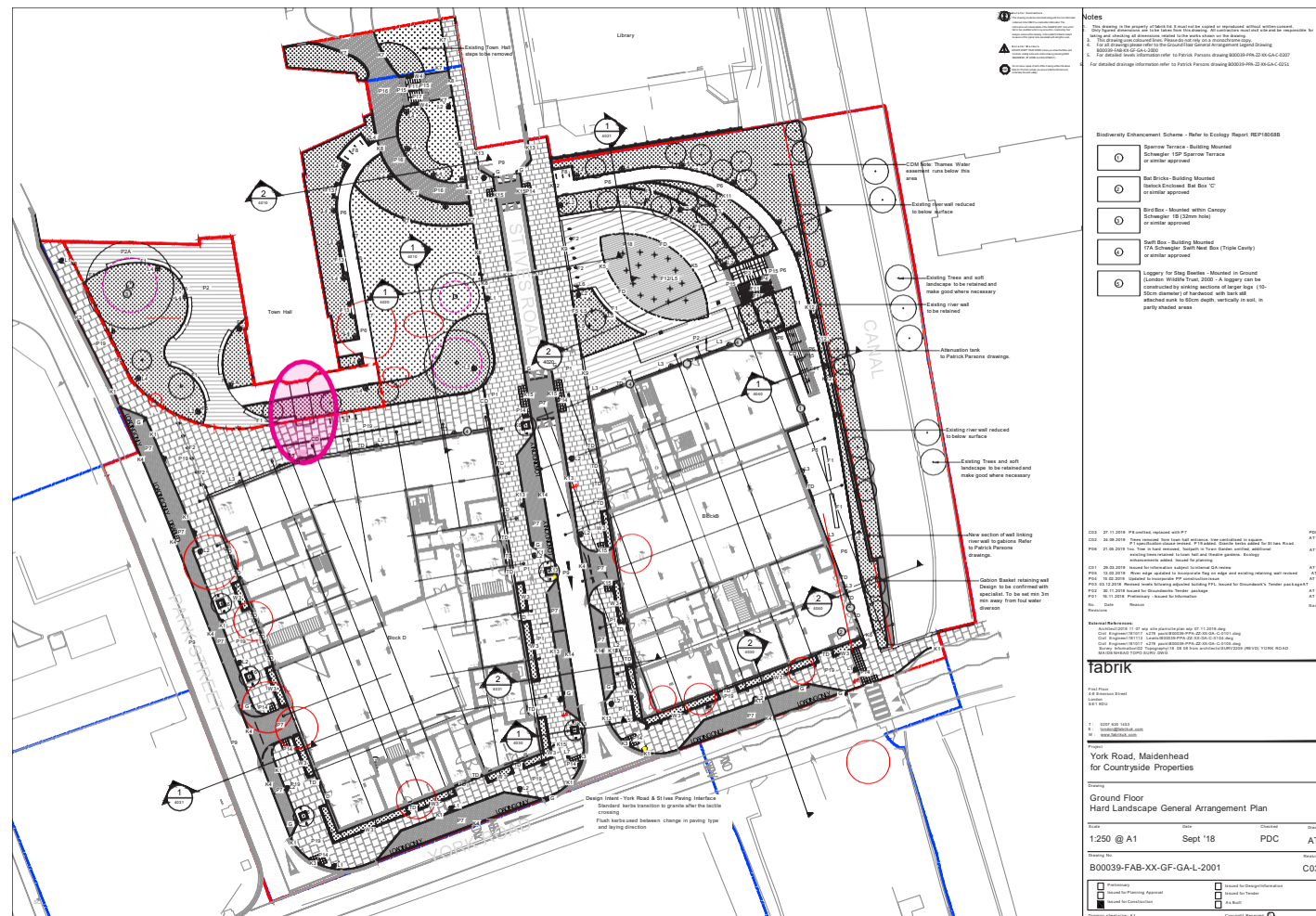
# CONTENTS

1.0 Existing Condition

2.0 Proposal

# 1.0 EXISTING CONDITION

The existing escape stair for the Town Hall lands level with the GF FFL, circa 28.200. It is approximately 2700mm wide and extends from the building line 6700mm. The lower enclosure is approximately 3000mm high.

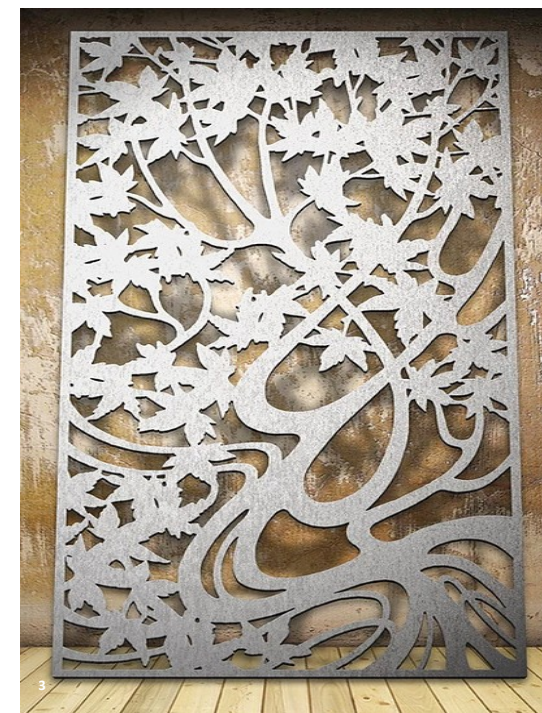
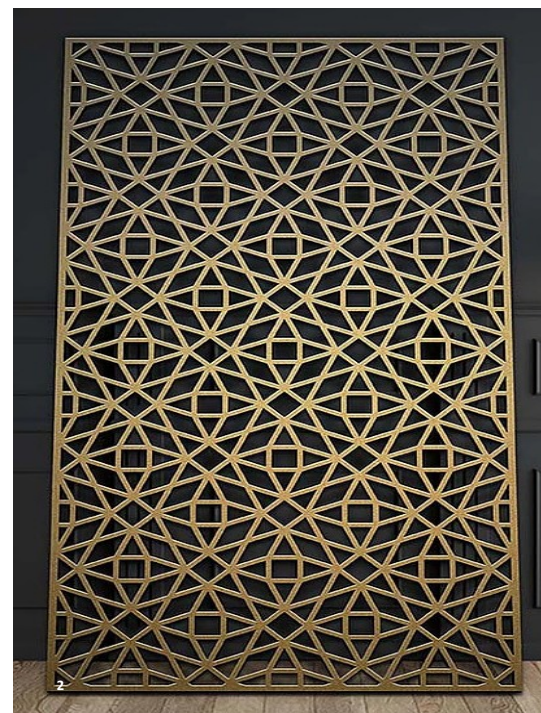
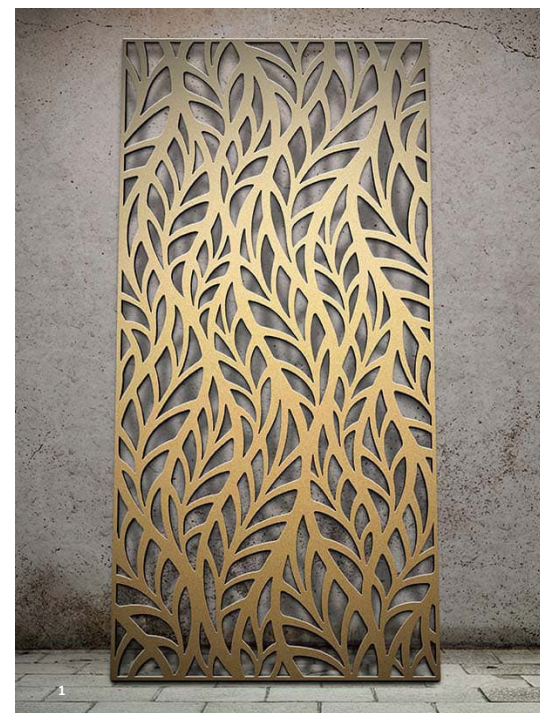
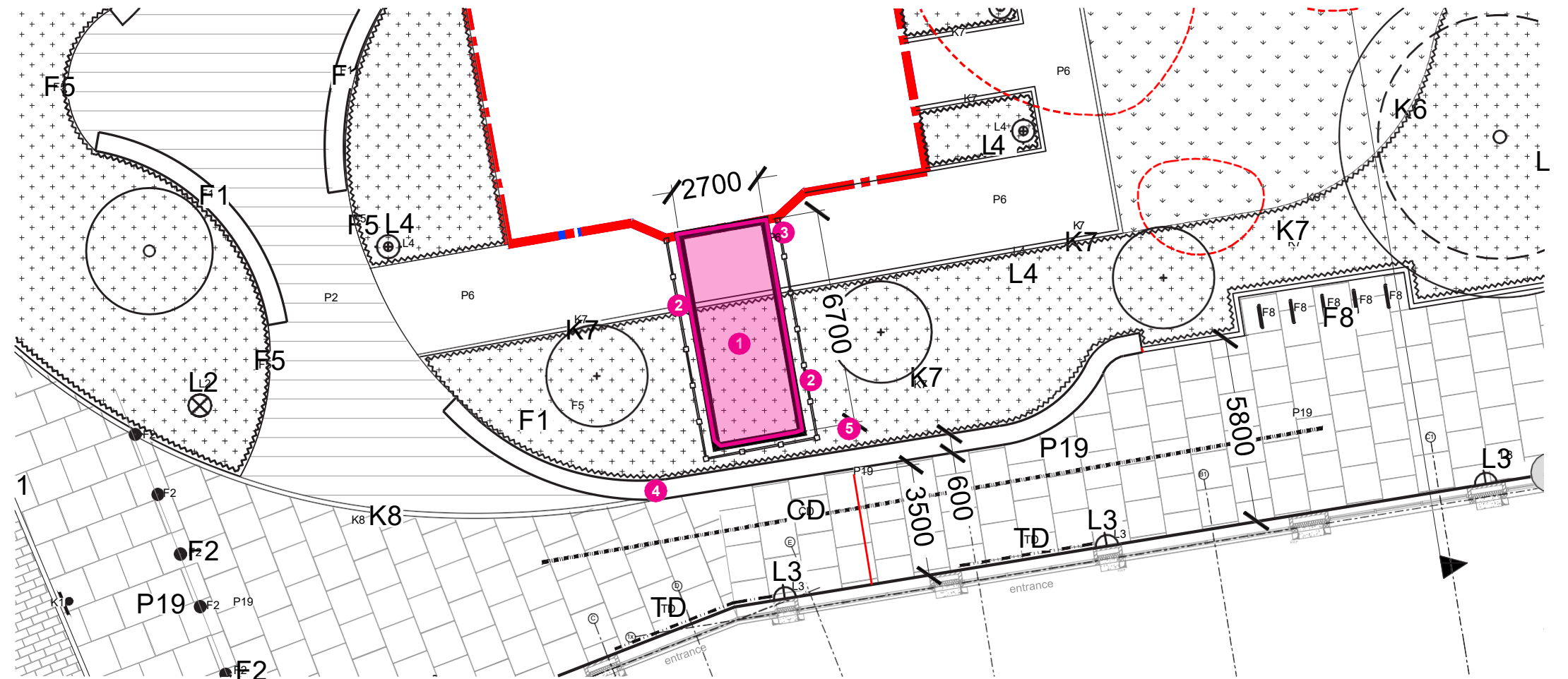


## 2.0

# Proposal

As an integral part of our proposed art strategy, the feature landscape screens could wrap around the stair case and sit harmoniously within the enhanced landscaped area.

Our developed idea illustrate how proposed art panels could transform the fire escape into an attractive public space for social interaction with immediate effect. The use of metal material is robust, durable and vandal resistant. The engraved laser cut design brings more visibility to the stair case, while lower maintenance cost in the long run makes this solution our preferred option in every aspect of analysis.



- 1 EXISTING FIRE ESCAPE
- 2 ART PANEL SCREEN
- 3 ACCESS POINT
- 4 SEATING WALL
- 5 EXTENDED PLANTING AREA

## DEVELOPED IDEA



FIGURE 4.1 A CONCRETE SEATING WALL THAT EMBRACES THE FIRE ESCAPE AND LANDSCAPED AREA COULD OVERCOME THE LEVEL DIFFERENCE AND CREATE A PUBLIC SPACE FOR SOCIAL INTERACTION. LANDSCAPING SUBJECT TO FURTHER APPLICATIONS

## DEVELOPED IDEA



FIGURE 4.2 ENHANCED WITH MORE CREATIVITY, THE LANDSCAPE SCREENS COULD SERVE AS A GALLERY PANEL SYSTEM AND MAKE THE FIRE ESCAPE AN INTEGRAL PART OF PUBLIC REALM ART STRATEGY. LANDSCAPING SUBJECT TO FURTHER APPLICATIONS

## DEVELOPED IDEA



FIGURE 4.3 ART PANEL SCREENS COULD BRING MORE TRANSPARENCY AND VISIBILITY TO THE FIRE ESCAPE. LANDSCAPING SUBJECT TO FURTHER APPLICATIONS

# DEVELOPED IDEA



FIGURE 4.4 THE PROPOSED DESIGN COULD TRANSFORM THE FIRE ESCAPE INTO AN ATTRACTIVE STREET ENVIRONMENT WHERE PEOPLE CAN ENJOY AND CULTIVATE FRIENDSHIP. LANDSCAPING SUBJECT TO FURTHER APPLICATIONS