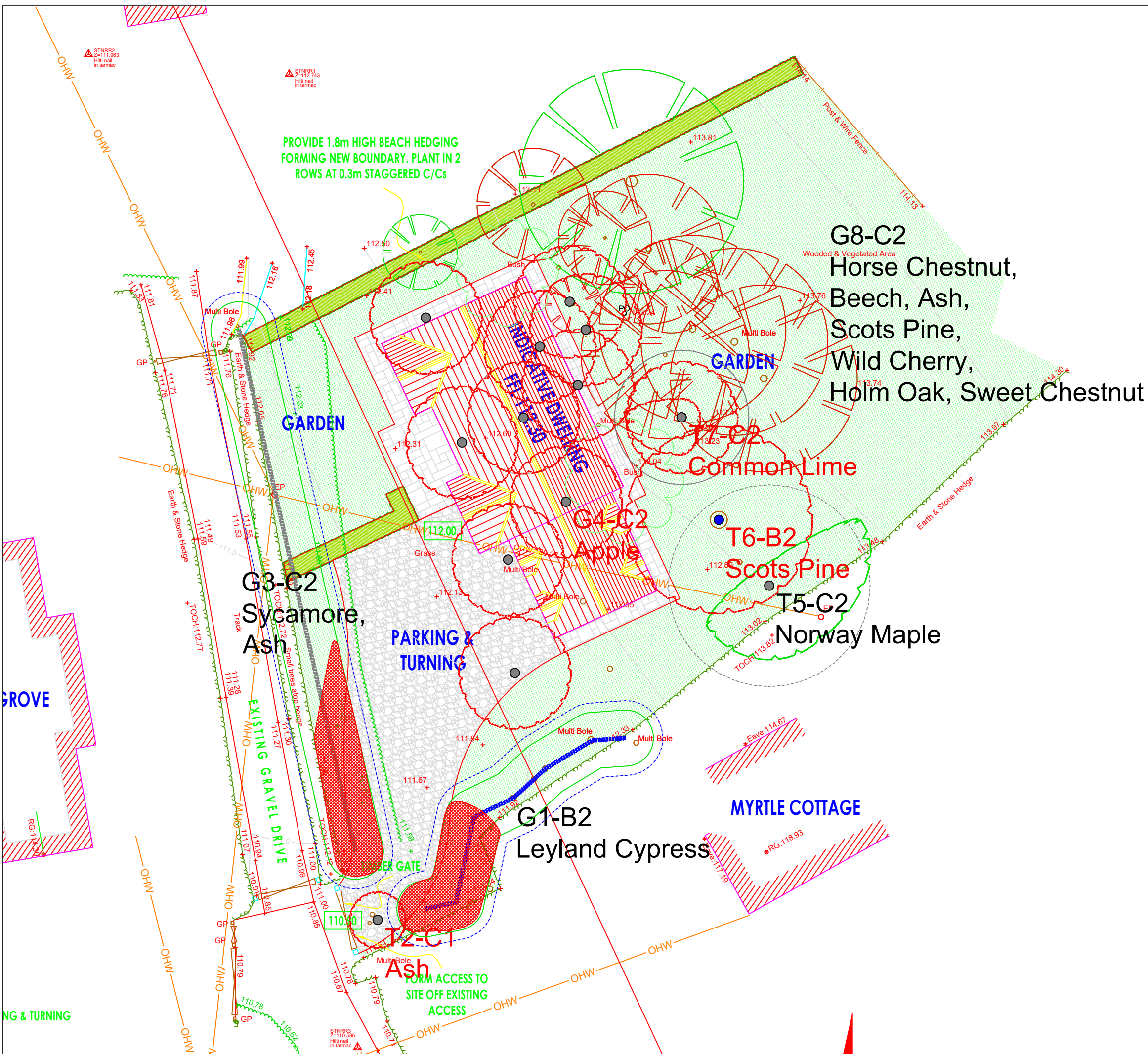


**Important:** Please note that this plan is to be viewed in colour and at the scale and size presented. It is likely to be difficult to read if presented in a smaller format. Important features of the plan are colour coded and the data processed, and conclusions drawn, may be difficult to assess if presented in black and white.

We have undertaken the survey in accordance with the recommendations in British Standard 5837:2012 Trees in relation to design, demolition & construction - Recommendations (BS 5837). The dimensions, spreads and root protection areas of groups are based on the largest trees within any group surveyed.



**G8-C2**  
 Horse Chestnut,  
 Beech, Ash,  
 Scots Pine,  
 Wild Cherry,  
 Holm Oak, Sweet Chestnut

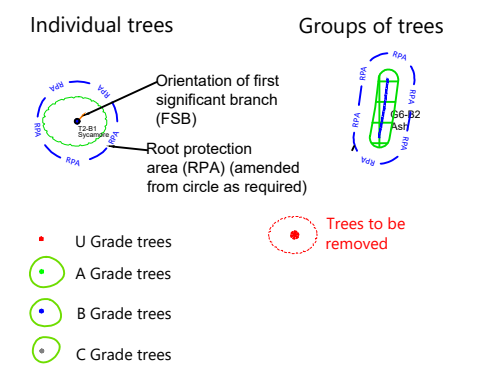
**T6-B2**  
 Scots Pine

**T5-C2**  
 Norway Maple

**G1-B2**  
 Leyland Cypress

**G3-C2**  
 Sycamore,  
 Ash

**G4-C2**  
 Apple



**evolve**  
 TREE CONSULTANCY  
 plan • develop • grow

8 Duke Street Truro Cornwall TR1 2QE  
 T 01872 276099 240026  
 E office@evoltrees.co.uk  
 W www.evoltrees.co.uk

Revision	Description	Date
Client: Mr R Buckland		
Project: Land at Grove Farm, Blackwater		
Drawing Title Tree Protection Plan		
Date: Dec 2020	Job Ref: 3746	
Drawn by: TSE	Scale 1:200 at A3	
Drawing number EV-3746-TPP-01-21		