

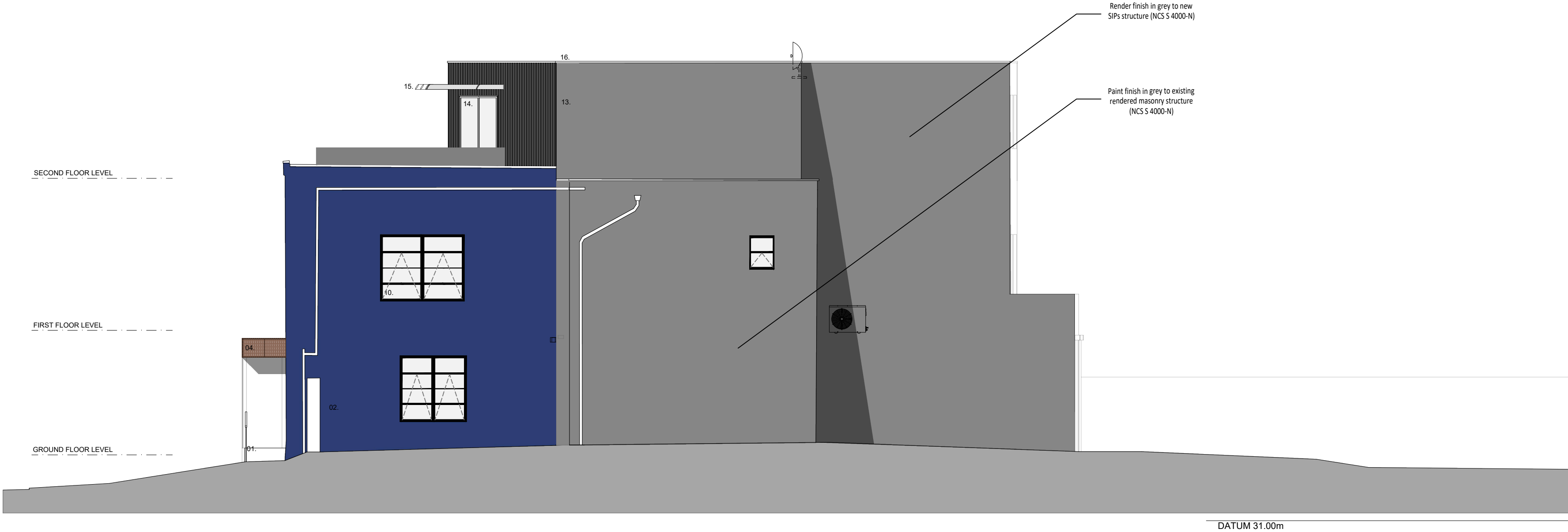
FOR PLANNING
PURPOSES ONLY
NOT FOR CONSTRUCTION



DATUM 31.00m
REAR ELEVATION - AS PROPOSED
SCALE @ 1:100 ON AN A1 SHEET

MATERIAL KEY

- 1 - Replacement balustrading in toughened glass with stainless steel handrail
- 2 - Existing rendered facade to receive external paint finish in blue to be agreed
- 3 - Existing glazed entrance door, retained
- 4 - Entrance canopy dressed in Corten steel, with laser-cut and backlit signage
- 5 - Existing tarmac surfacing
- 6 - Defensive planting to the perimeter of cycle parking area
- 7 - Existing steps
- 8 - Cycle parking - 'Sheffield Hoops'
- 9 - Existing brick wall
- 10 - Replacement windows in aluminium frames, finished in dark grey
- 11 - Existing light fittings retained
- 12 - Balustrading formed in timber with vertical hit and miss timber weatherboarding in black finish
- 13 - Vertical hit and miss timber weatherboarding in black finish
- 14 - New sliding doors in aluminium frames, finished in grey
- 15 - Brise soleil in metal with a galvanised finish



SIDE (NORTH EAST) ELEVATION - AS PROPOSED
SCALE @ 1:100 ON AN A1 SHEET

REV.	DATE.	BY.	AMENDMENT.	CHK.
B	08.06.21	SM	Materials revised	-
A	10.03.21	SM	Satellite dishes omitted	-

**VARIATION OF
CONDITION**

NOTES:
DO NOT SCALE OFF THIS DRAWING UNLESS FOR PLANNING PURPOSES.
CHECK ALL DIMENSIONS ON SITE BEFORE ANY WORK IS COMMENCED.
ALL GOODS MATERIALS AND WORKMANSHIP MUST CONFORM WITH CURRENT BUILDING REGULATIONS, BRITISH STANDARDS AND CODES OF PRACTICE.
COPYRIGHT OF THIS DRAWING IS RETAINED BY GEORGE BAXTER ASSOCIATES LTD. AND IT MUST NOT BE REPRODUCED WITHOUT WRITTEN CONSENT.



George Baxter Associates Ltd.
3 Lucastes Mews
Paddockhall Road
Haywards Heath
West Sussex
RH16 1HE
(01444) 847455
info@georgebaxterassociates.co.uk
www.georgebaxterassociates.co.uk

CLIENT. Star Property Investments
PROJECT. 255 Old Shoreham Road Hove, East Sussex BN3 7ED

DRAWING. Rear and Side (NE) Elevations As Proposed		
DATE. 08.06.21	SCALE AT A1. 1:100	DRAWN BY. SM CHECKED BY. -

JOB NO. H5349	DRAWING NO. VOC.06	REV. B
------------------	-----------------------	-----------