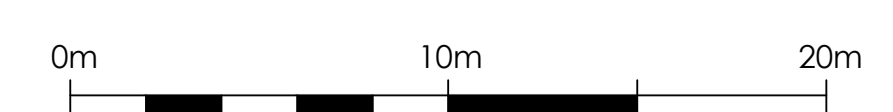
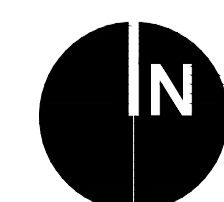
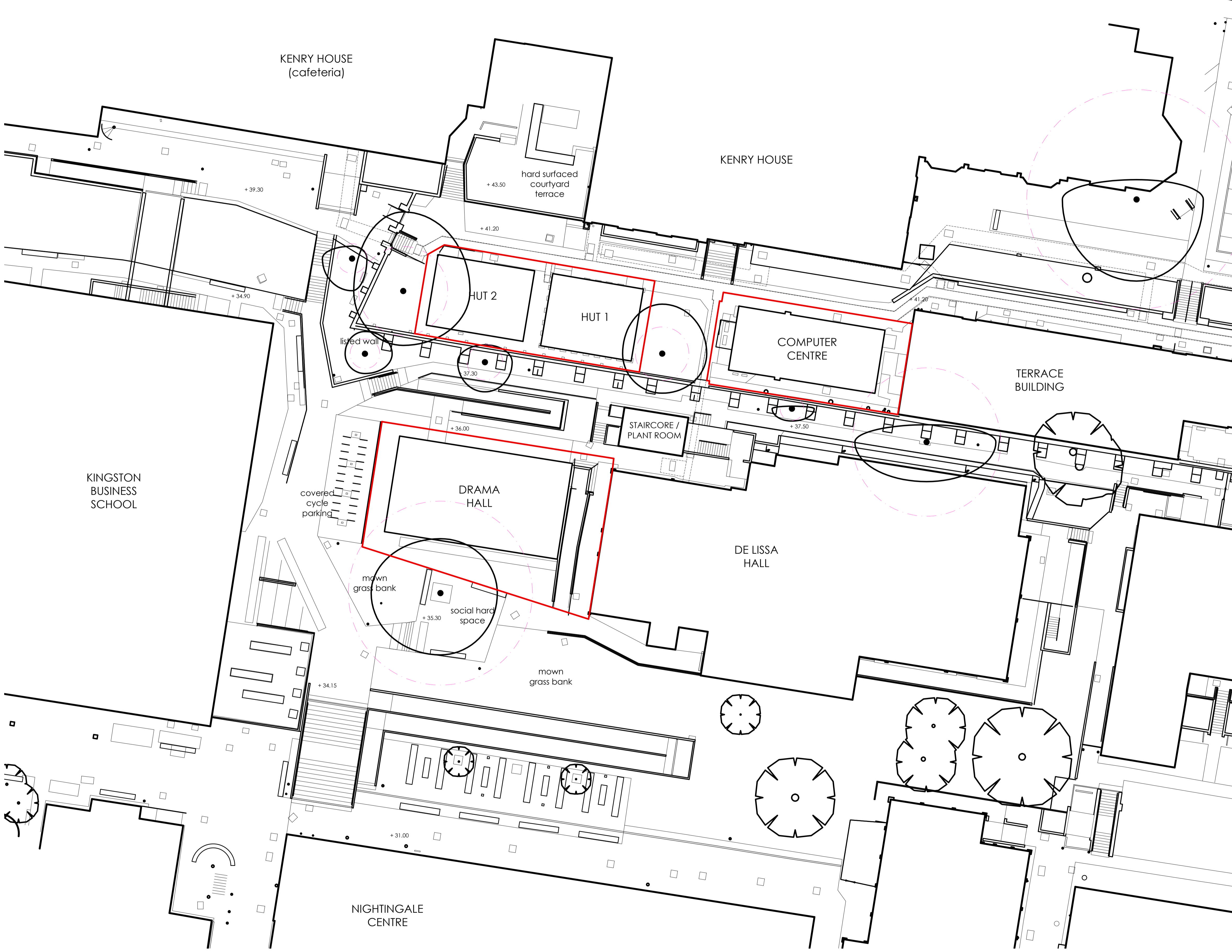


LEGEND

- Application boundary
- Existing tree with associated root protection area (RPA)



Robert Bray Associates
Sustainable Drainage Consultants + Landscape Architects

Project name: Kingston Hill University Campus

Drawing title: Existing Site Plan

Status: Planning Date: 18.05.2021

Drawing no: RBA-KHC-021 Sheet: - Rev: A

Scale: 1:200 @A1 Drawn by: MH Approved by: MH

Robert Bray Associates Ltd :: 9 New Mills Libbys Drive Stroud GL5 1RN
tel 01453 763116 :: info@robertbrayassociates.co.uk :: www.sustainable drainage.com

Copyright Robert Bray Associates Ltd. Robert Bray Associates accepts no liability for any use of this document other than for its original purpose, or by the original client, or following Robert Bray Associates express agreement to do such. No dimensions are to be scaled from this drawing, all measurements are to be checked on site. If in doubt please ask.