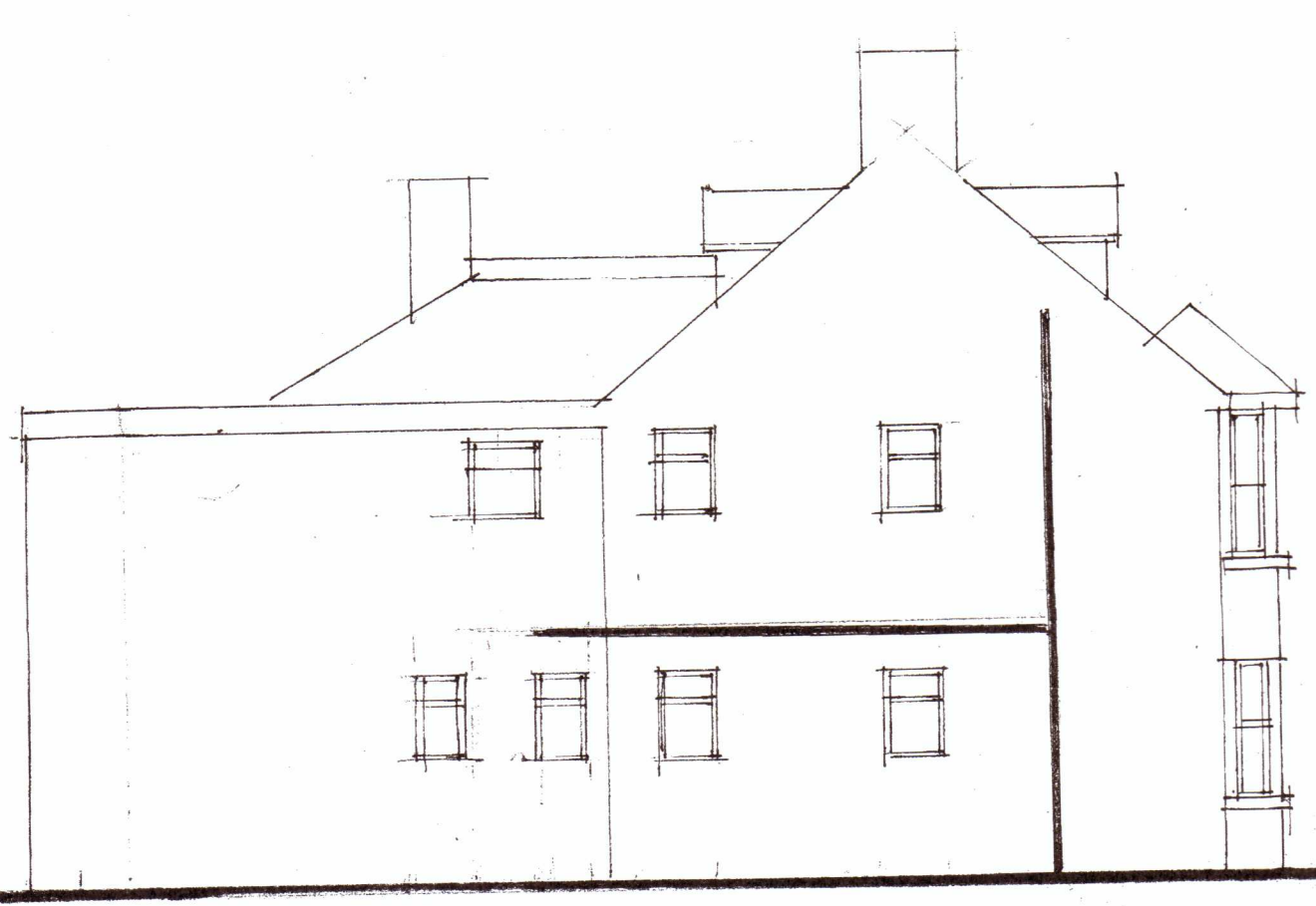
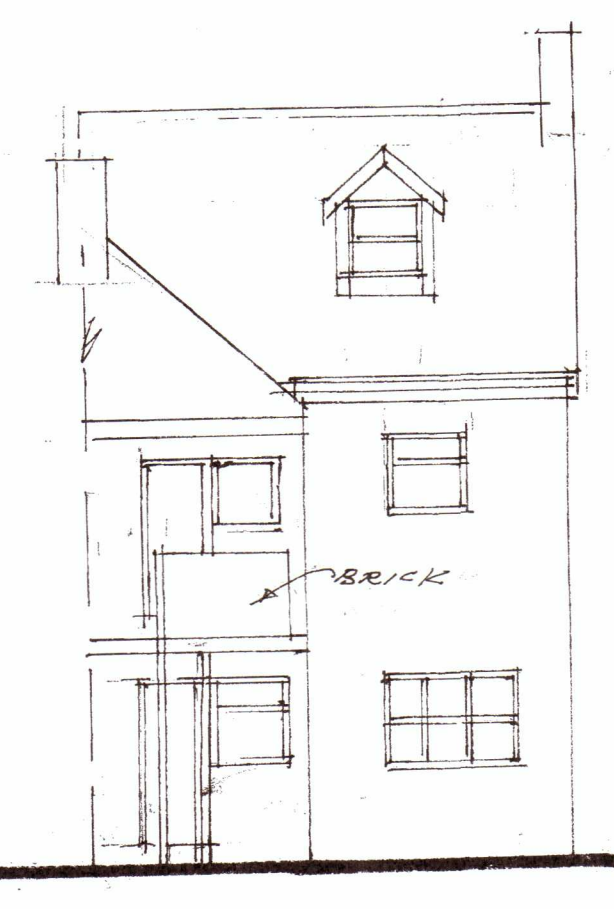




FRONT ELEVATION



SIDE ELEVATION



REAR ELEVATION

WINDOWS & DOORS TO BE P.V.C. FRAMES
 DOUBLE GLAZED UNITS WITH 20mm AIR SPACE BETWEEN
 PANELS IN LOW E GLASS ANY GLAZING BELOW 800mm
 ABOVE F.F.L AND ALL DOORS & SIDE PANELS TO BE
 1.2 SAFETY GLASS, WINDOWS TO BE EXPRESS TYPE
 TO HAVE MIN 450x450 CLEAR OPENINGS AND
 AT LEAST 0.33 M² CLEAR OPENING. MAXIMUM
 CILL HEIGHT OF 1.100 ABOVE F.F.L
 WINDOWS TO BE FITTED WITH TRICKLE VENTS
 EQUAL TO 8000 M³/H², WINDOWS TO BE FITTED
 WITH CHILD LOCKS,

ELECTRICAL: ALL ELECTRICAL WORKS TO BE CARRIED
 OUT TO THE CURRENT I.E.E REGS AND PART 17
 OF THE BUILDING REGS AND INSTALLED BY A
 MEMBER OF A COMPETENT PERSON SCHEME
 LIGHTING TO BE LOW WATTAGE TYPE WITH
 LUMINOUS EFFICIENCY GREATER THAN 45
 LUMENS PER CIRCUIT WATTS
 LIGHT SWITCHES TO BE 1.200 ABOVE F.F.L
 SOCKET OUTLETS TO BE 450mm ABOVE F.F.L

Ⓢ D SMOKE DETECTORS TO HAVE COMBINED
 EMERGENCY LIGHTS WITH BATTERY
 BACK UP (DESIGNED AND INSTALLED TO B.S 5839)

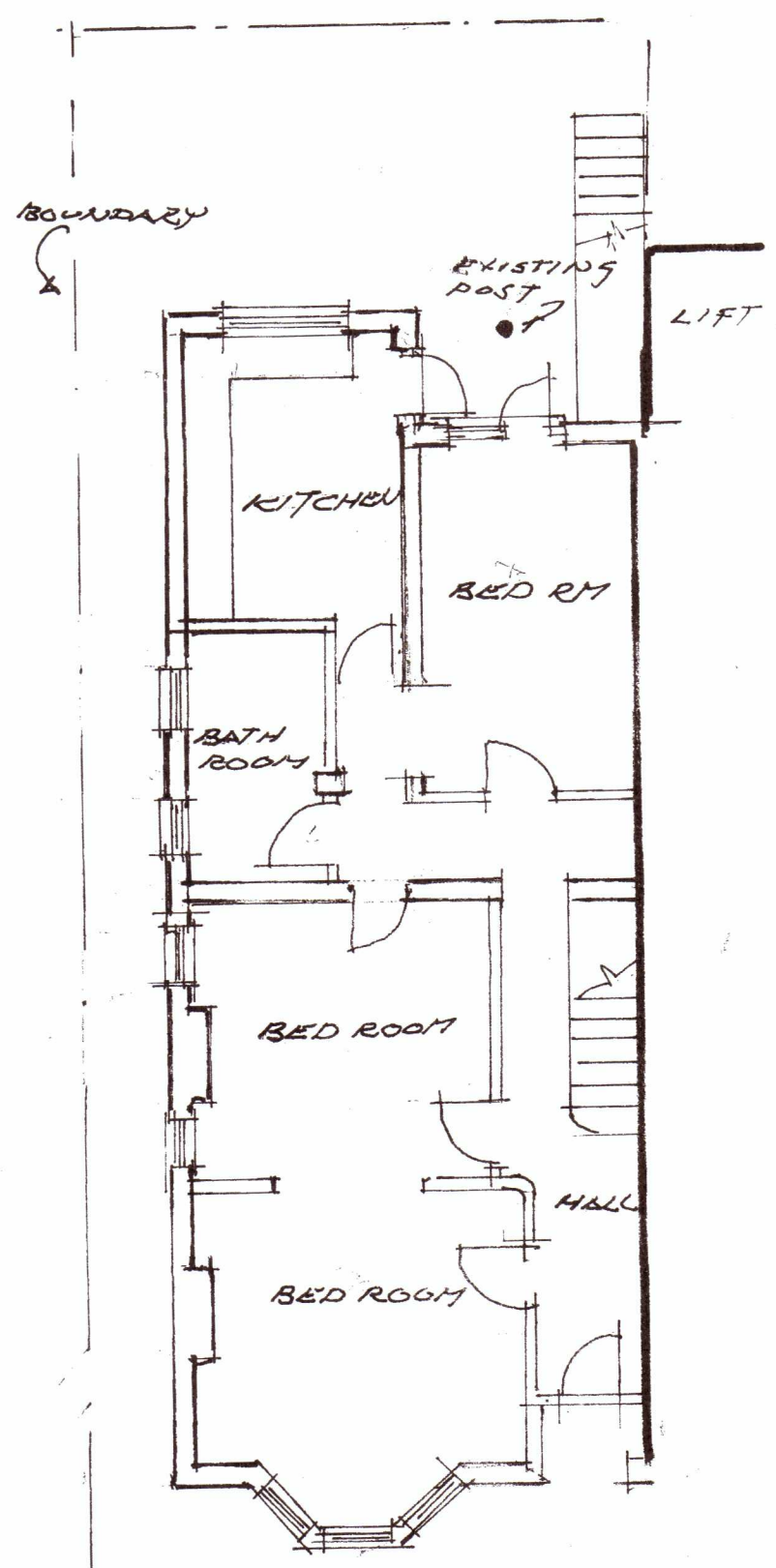
Ⓜ HEAT DETECTORS IN KITCHEN AND 600mm FROM
 ENTRANCE DOOR
 Ⓢ CARBON MONOXIDE ALARMS

EACH DETECTORS IN EACH FLAT TO BE LINKED
 TOGETHER (FIRE ALARM TO BE TESTED BY LANDROB WEEKLY
 SMOKE DETECTORS IN ENTRANCE HALL TO BE
 LINKED TOGETHER)

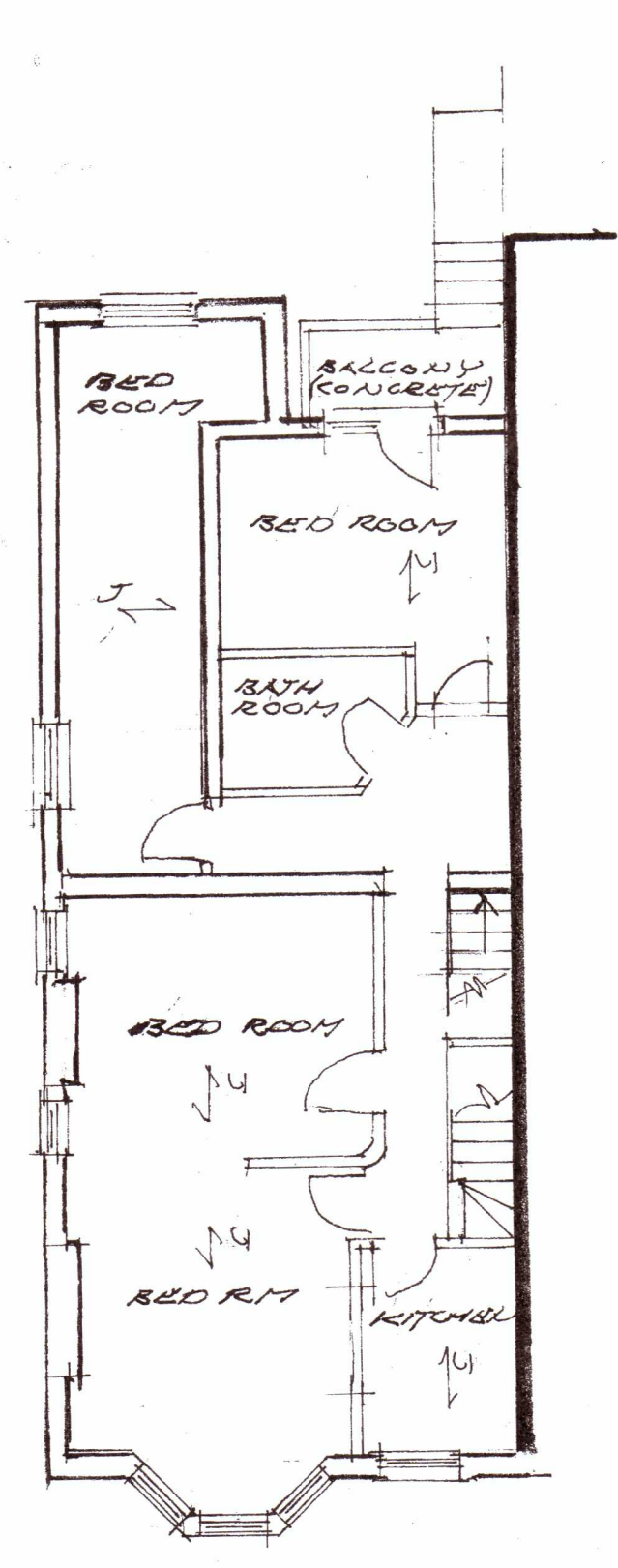
MECHANICAL VENTILATION VENTILATE KITCHENS
 WITH EXTRACTORS WORKINGS AT 60 LITRES PER
 SECOND BATH ROOMS TO HAVE EXTRACTORS
 WORKINGS AT 15 LITRES PER SECOND. EXTRACTORS
 TO HAVE 15 MIN OVERRUN AND DUCTED TO OUTSIDE
 DOORS TO THESE ROOMS TO HAVE 10mm GAP TO BOTTOM OF DOORS
 HEATING GAS BALANCED FLUE COMBI BOILERS
 WITH GLASS A RATINGS
 BOILERS TO BE CONNECTED TO ROOM STAIRS
 RADIATORS TO BE FITTED WITH T.R.V'S
 ALL PIPE WORKS TO BE INSULATED, ALL WORKS
 TO BE CARRIED OUT IN ACCORDANCE WITH
 DOMESTIC HEATING COMPLIANCE GUIDE
 HOT WATER TO BE SUPPLIED BY THE COMBI BOILER
 TO G3 OF THE BUILDING REGS
 WHOLESOME WATER SUPPLIED TO EACH
 FLAT IN ACCORDANCE WITH APPROVED
 DOCUMENTS 9.1

FIRE PROTECTION TO U.B'S 44x44 S.W FRAMING
 CLAD WITH 2 LAYERS OF 15.6 THICK PLASTER
 BOARD WITH STAGGERED JOINTS + SKIM COAT
 PLASTER
 FIRE BLANKET EACH KITCHEN TO BE FITTED WITH
 A FIRE BLANKET

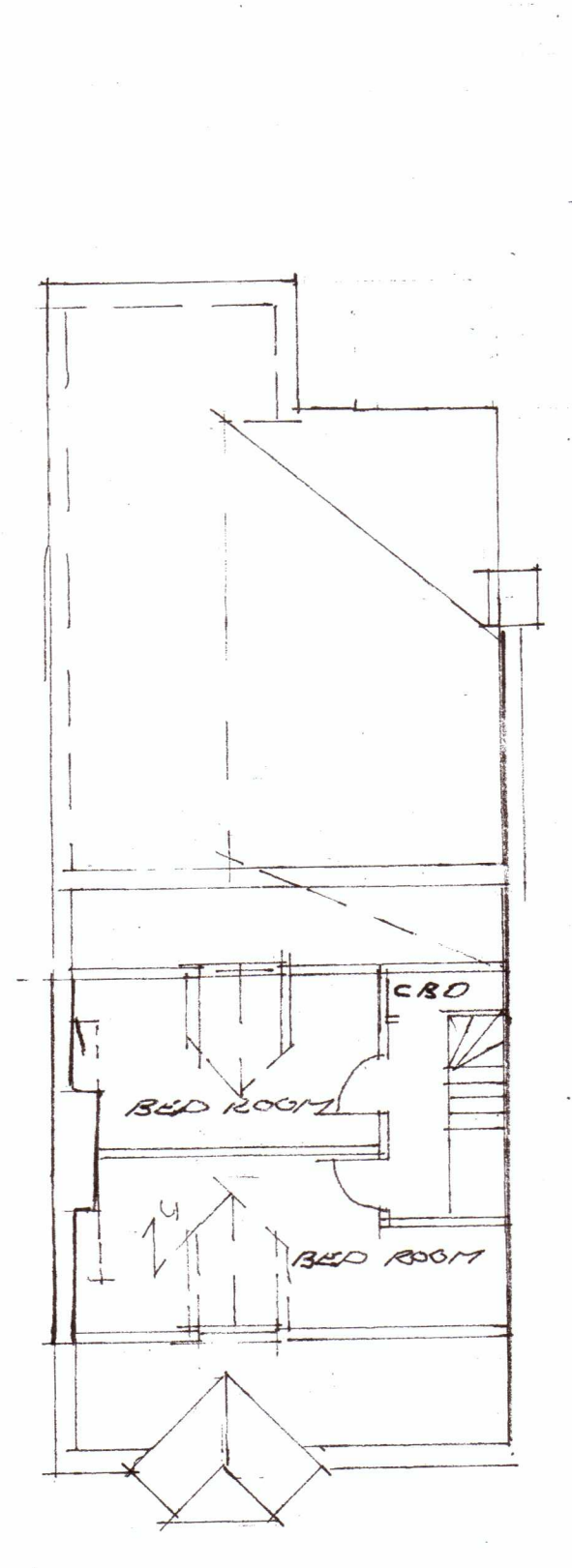
EMERGENCY LIGHTING INSTALLED IN
 ESCAPE ROUTES TO B.S 5266 PART 1



GROUND FLOOR PLAN

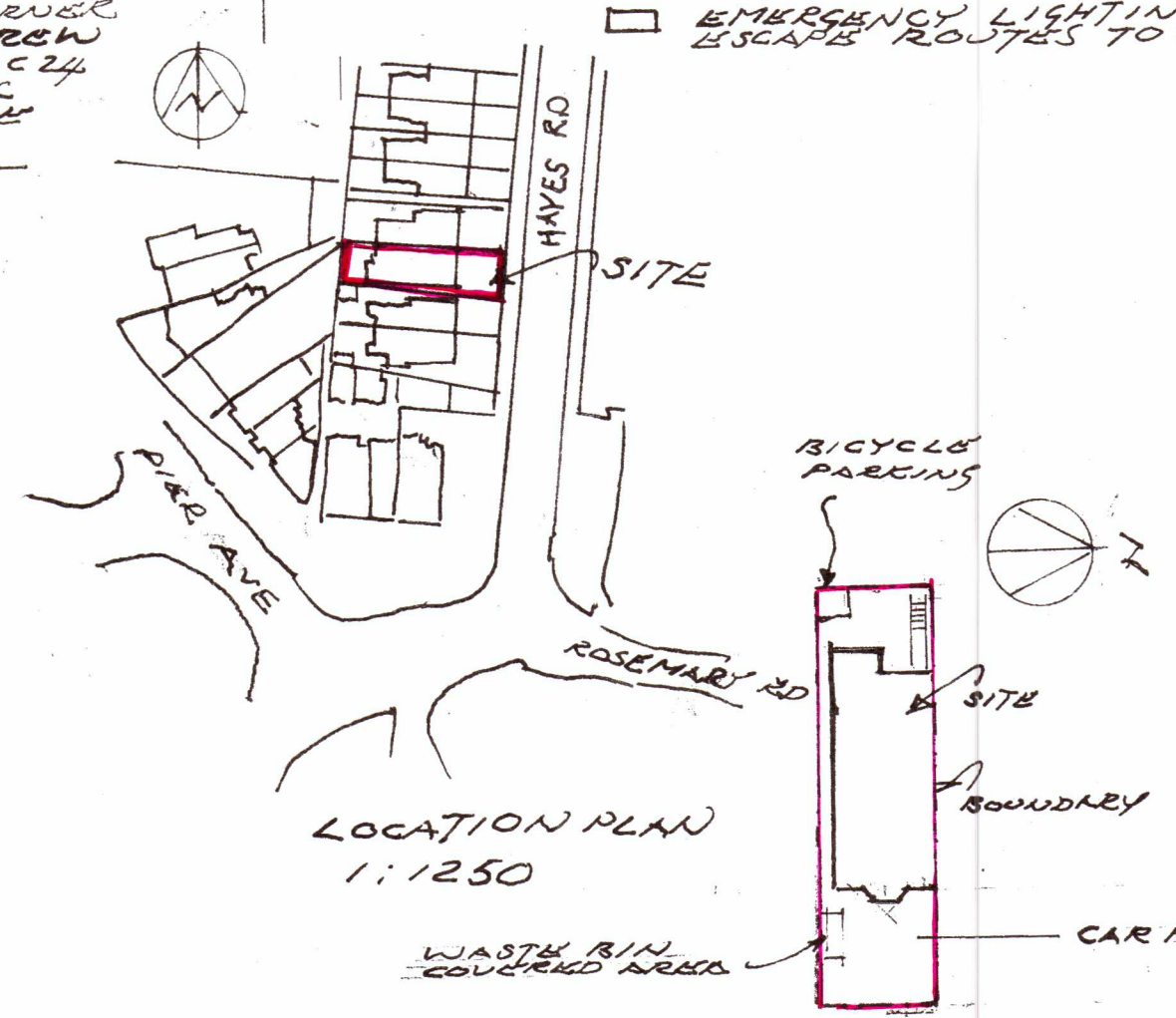


FIRST FLOOR PLAN



SECOND FLOOR PLAN

BEAM SCHEDULE	
(READ IN CONJUNCTION WITH ENGINEERS DETAILS.)	
A	2 NO CATNIC BHD 100 HEAVY DUTY LINTELS WITH 150mm END BEARINGS.
B	152x89x16 U.B S275 TO SIT ON 215x100x65 ENGINEERING BRICK PADSTONE BUILT INTO WALL, 97x97 C 24 POST IN STUD WALL CONNECTED TO U.B. AND TIMBER PLATE WITH 100x75x8 90 WIDE M.S ANGLE, TOP AND BOTTOM
C	2 NO CATNIC B.S.D 100 BOX LINTELS SIDE BY SIDE
D&E	72x122 C 24'S LET INTO 97x97 C 24 CORNER POSTS AND SCREW FIXED 45x95 C 24 JOISTS AT 400 C/C ALL TIMBER TO BE TREATED.



LOCATION PLAN 1:1250

SITE PLAN 1:500