

**MATERIAL SCHEDULE (D1 - COMMUNITY CENTRE)  
AS PLANNING PERMISSION 20 / 1469 / FUL  
& SUBMITTED APPROVED SAMPLES**

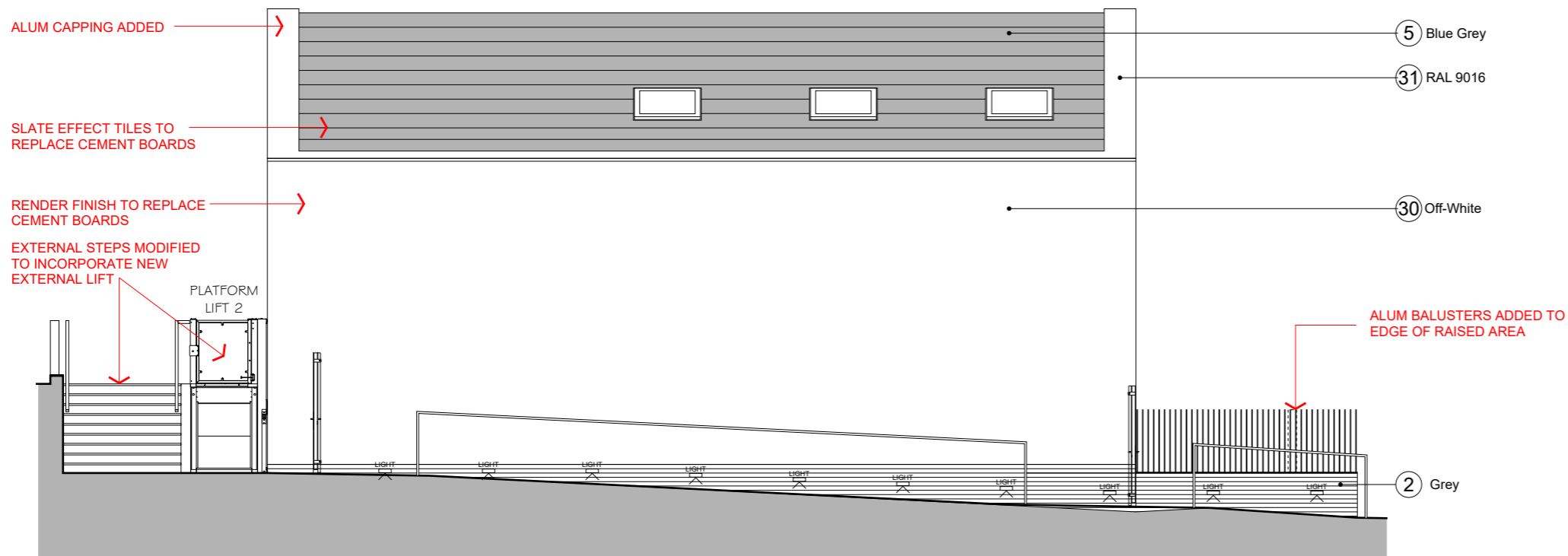
- 01. Buff Multi face stretcher bond brickwork/extruded brick pattern with Bathstone colour bucket handle mortar joints (Mystique by TBS)
- 02. Grey Multi face stretcher bond brickwork/extruded brick pattern with Bathstone colour bucket handle mortar joints (Grosvenor Grey Multi facing by Crest).
- 03. 215mm H Grey soldier course brickwork to top of windows (as spec 02)
- 04. (D1) Envelope Light Grey Fibre cement panel (max dim 3050mmx850mm). Equitone Natura, Quartz White or similar.
- 05. Eternit Birkdale 600x300mm blue/black fibre cement slate effect (main roof & ridge tiles)
- 06. Powder coated metal balustrade 450mm high with 10x100mm balustrades (RAL 7047) fixed above light grey brickwork along the perimeter .
- 10. Full height PPC metal privacy screen with vertical 10x100mm slats angled at 90° to (D1) main facade (RAL 9106)
- 12. Aluminium framed curtain wall (D1). External frame 200x50mm, mullions and transoms 200x50 mm (frame RAL 9106). Aluminium-cladded solid panels, colour matching the frame.
- 15. PPC metal gates and directly adjacent fencing to communal areas (RAL 7047)
- 27. PVC Composite perimeter fencing (RAL 7011)

- CURTAIN WALL REFERENCES**
- GLA. Aluminium-cladded solid panels, colour matching the frame (RAL 9106).
  - GLB. Double glazed unit with solar tint glazing
  - GLC. Double glazed unit with clear glazing (to internal CW)

**MATERIAL SCHEDULE (D1 - COMMUNITY CENTRE)  
PROPOSED NEW ALTERNATIVE MATERIALS**

- 30. Off white render finish
- 31. Aluminium PPC full width coping (RAL 9106)
- 05. Eternit Birkdale 600x300mm blue/black fibre cement slate effect (to match residential main roof)

D1 Community Centre  
APPROVED PLAN 20 / 1469 / FUL  
North West (Side) Elevation



D1 Community Centre  
PROPOSED MATERIAL CHANGE  
North West (Side) Elevation