

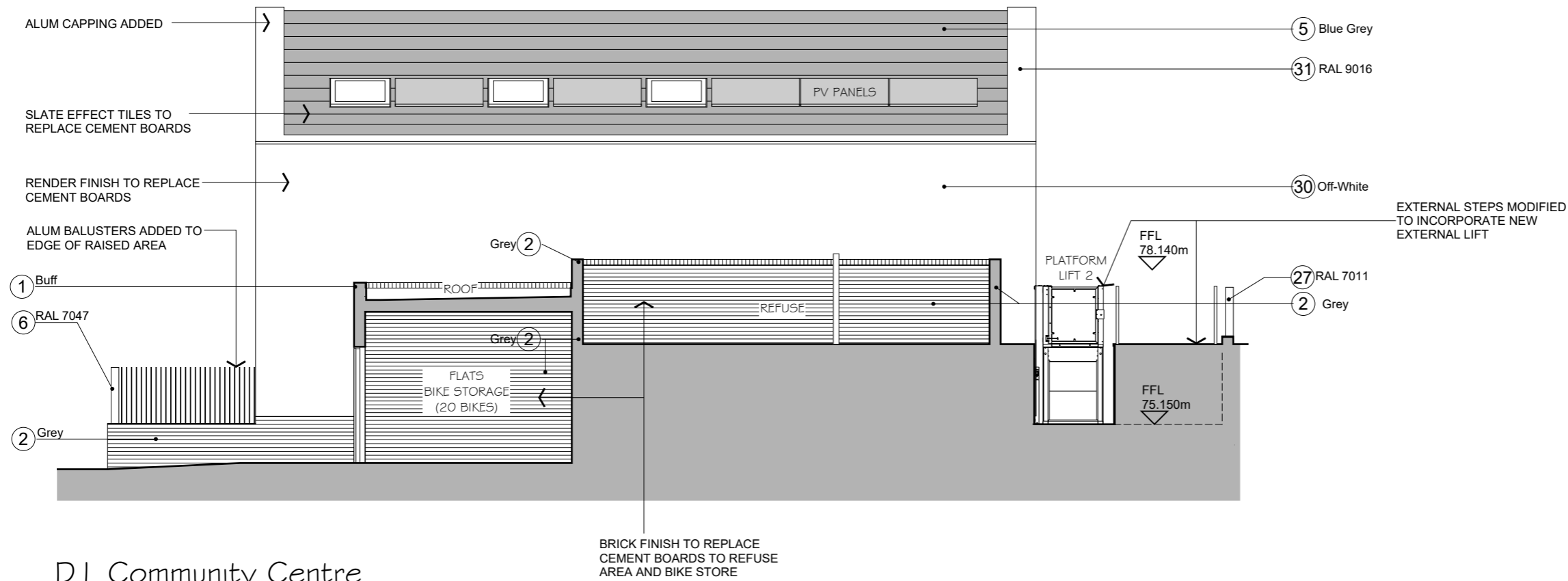
**MATERIAL SCHEDULE (D1 - COMMUNITY CENTRE)
AS PLANNING PERMISSION 20 / 1469 / FUL
& SUBMITTED APPROVED SAMPLES**

- 01. Buff Multi face stretcher bond brickwork/extruded brick pattern with Bathstone colour bucket handle mortar joints (Mystique by TBS)
- 02. Grey Multi face stretcher bond brickwork/extruded brick pattern with Bathstone colour bucket handle mortar joints (Grosvenor Grey Multi facing by Crest).
- 03. 215mm H Grey soldier course brickwork to top of windows (as spec 02)
- 04. (D1) Envelope Light Grey Fibre cement panel (max dim 3050mmx850mm). Equitone Natura, Quartz White or similar.
- 05. Eternit Birkdale 600x300mm blue/black fibre cement slate effect (main roof & ridge tiles)
- 06. Powder coated metal balustrade 450mm high with 10x100mm balustrades (RAL 7047) fixed above light grey brickwork along the perimeter .
- 10. Full height PPC metal privacy screen with vertical 10x100mm slats angled at 90° to (D1) main facade (RAL 9106)
- 12. Aluminium framed curtain wall (D1). External frame 200x50mm, mullions and transoms 200x50 mm (frame RAL 9106). Aluminium-cladded solid panels, colour matching the frame.
- 15. PPC metal gates and directly adjacent fencing to communal areas (RAL 7047)
- 27. PVC Composite perimeter fencing (RAL 7011)

- CURTAIN WALL REFERENCES**
- GLA. Aluminium-cladded solid panels, colour matching the frame (RAL 9106).
 - GLB. Double glazed unit with solar tint glazing
 - GLC. Double glazed unit with clear glazing (to internal CW)

**MATERIAL SCHEDULE (D1 - COMMUNITY CENTRE)
PROPOSED NEW ALTERNATIVE MATERIALS**

- 30. Off white render finish
- 31. Aluminium PPC full width coping (RAL 9106)
- 05. Eternit Birkdale 600x300mm blue/black fibre cement slate effect (to match residential main roof)



D1 Community Centre
PROPOSED MATERIAL CHANGE
South East (Side) Elevation



SLM ASSOCIATES		Project 66 Grove Rd Barnet EN4 9DF	
Unit 2.11 - Q West 1110 Great West Road London, TW8 0GP		Title Proposed (D1) Community Centre S-E Elevation Scale 1:100 @ A3	
Tel: +44 (0) 20 3735 7206 Mob: +44 (0) 7977 498777		Date Jun 2021	Drawn
		Project 2158	Drawing No. TP 14
		Revision	