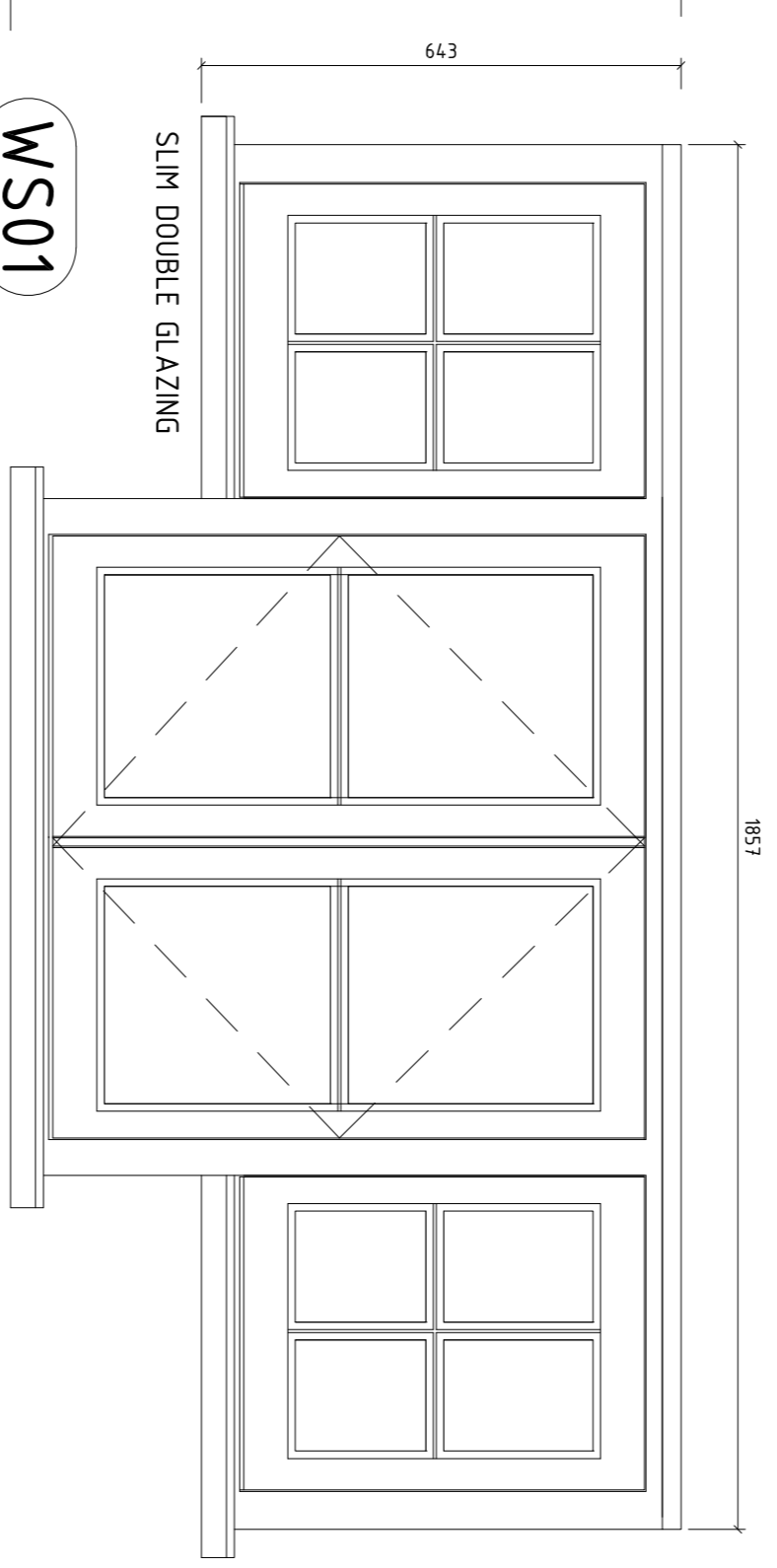
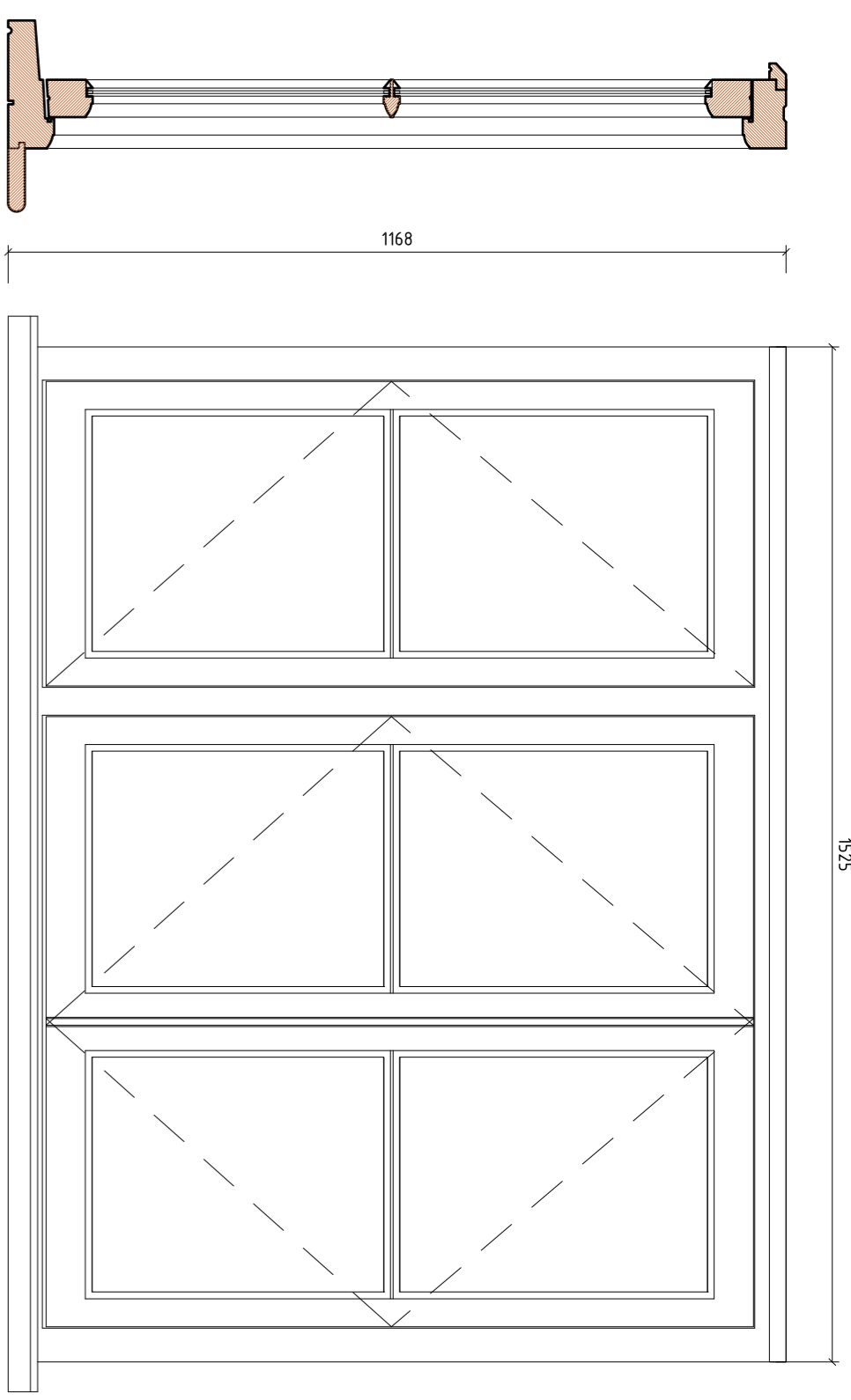


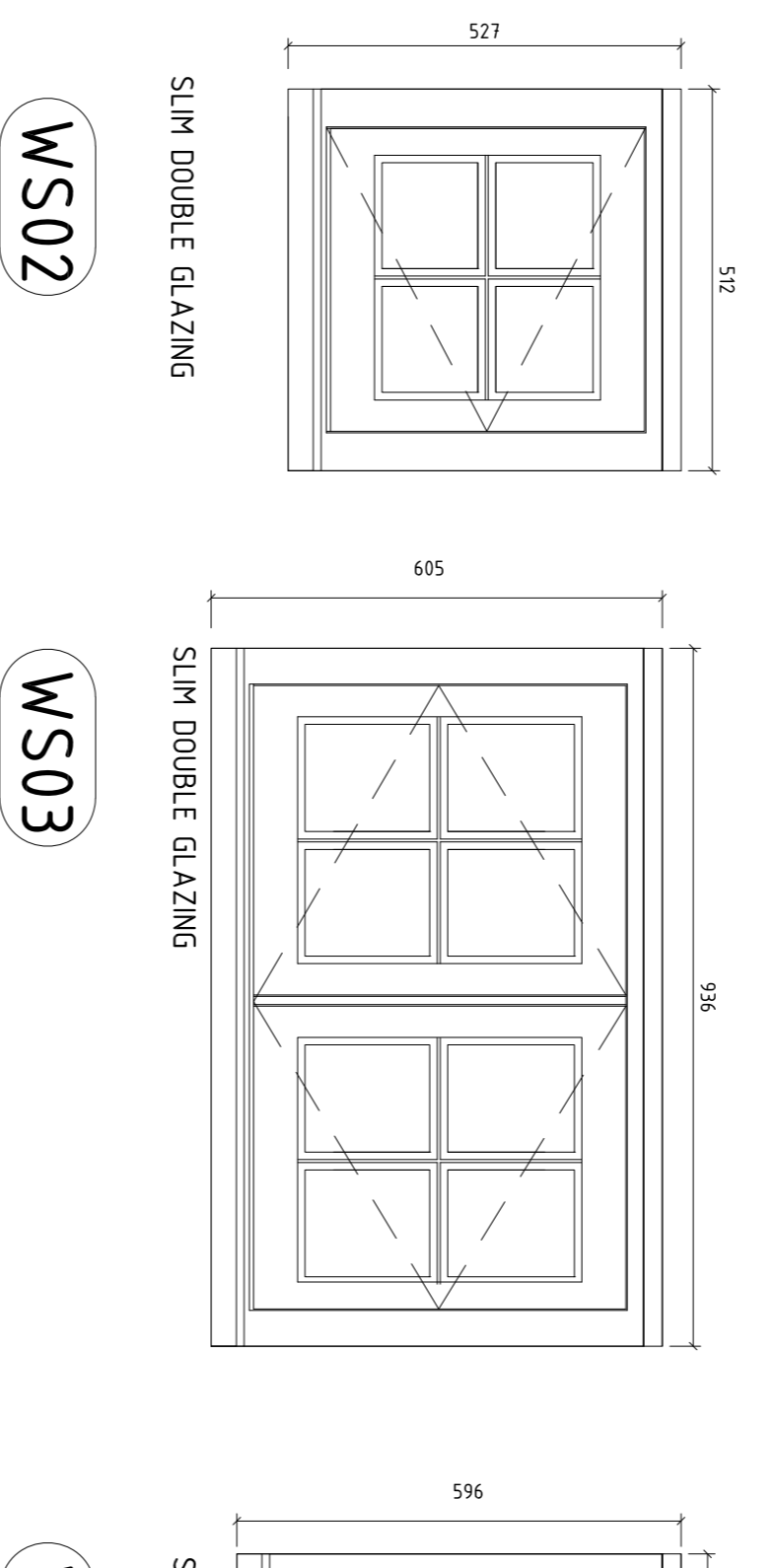
WG01



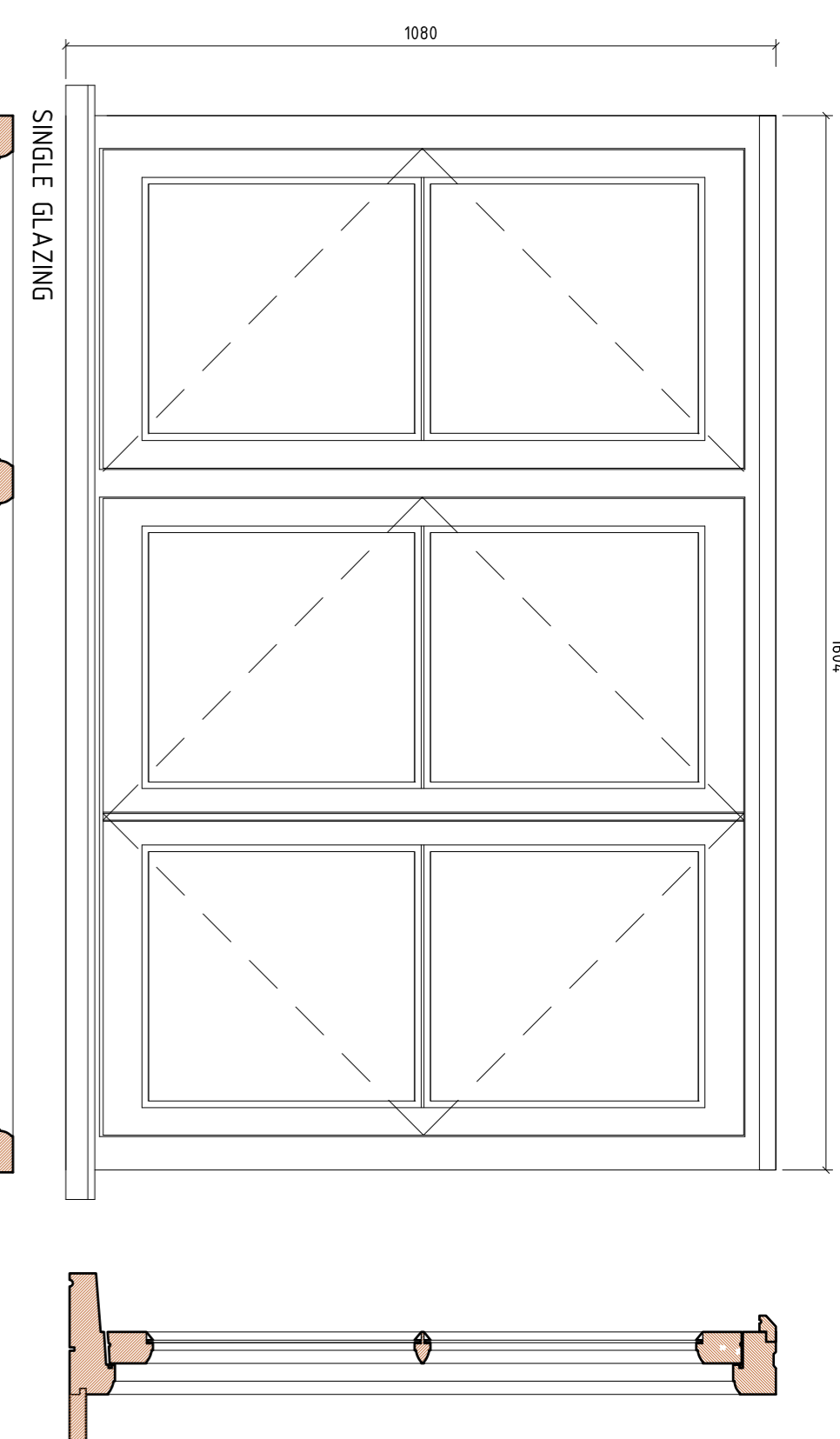
WS01



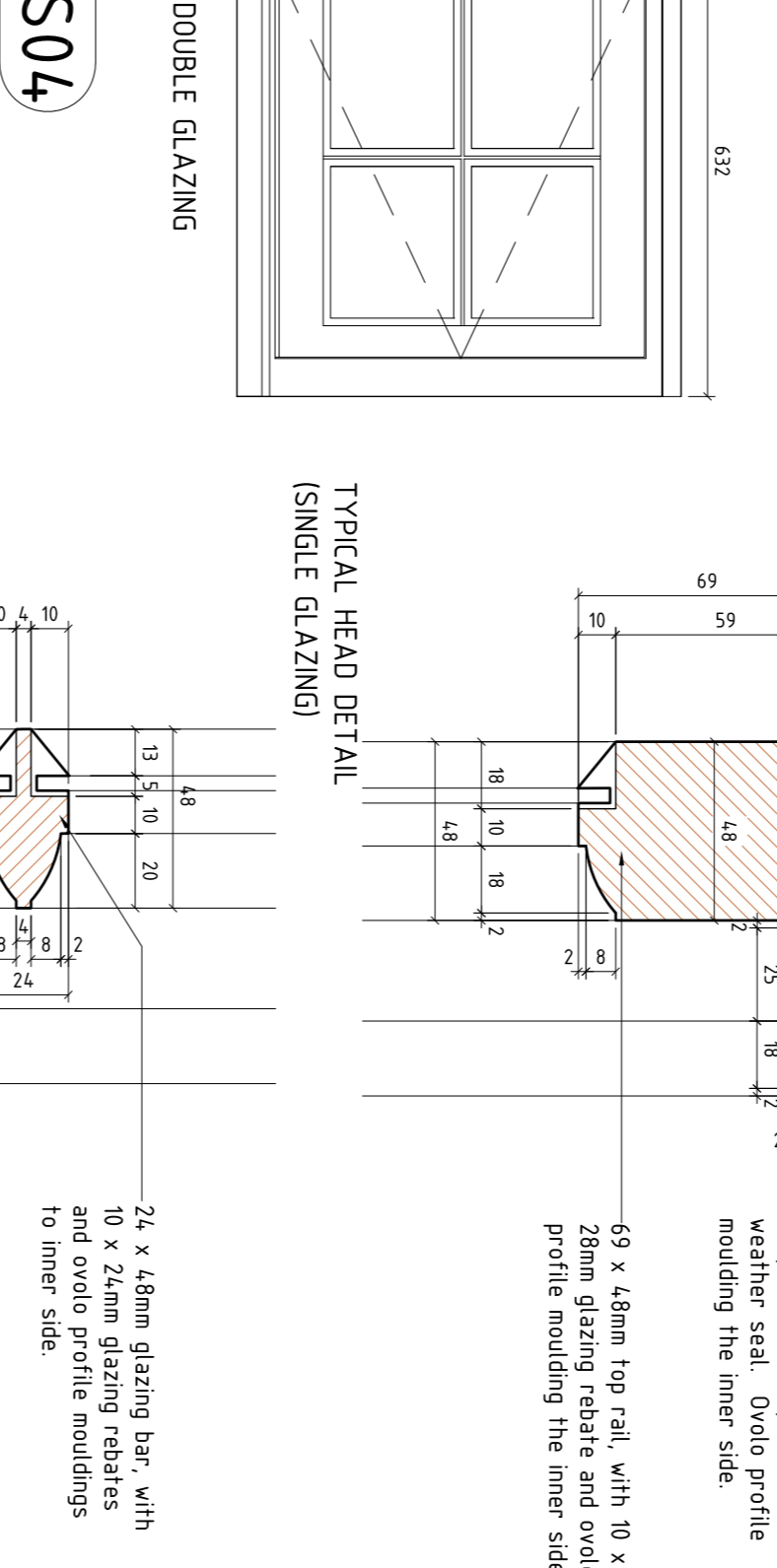
WG02



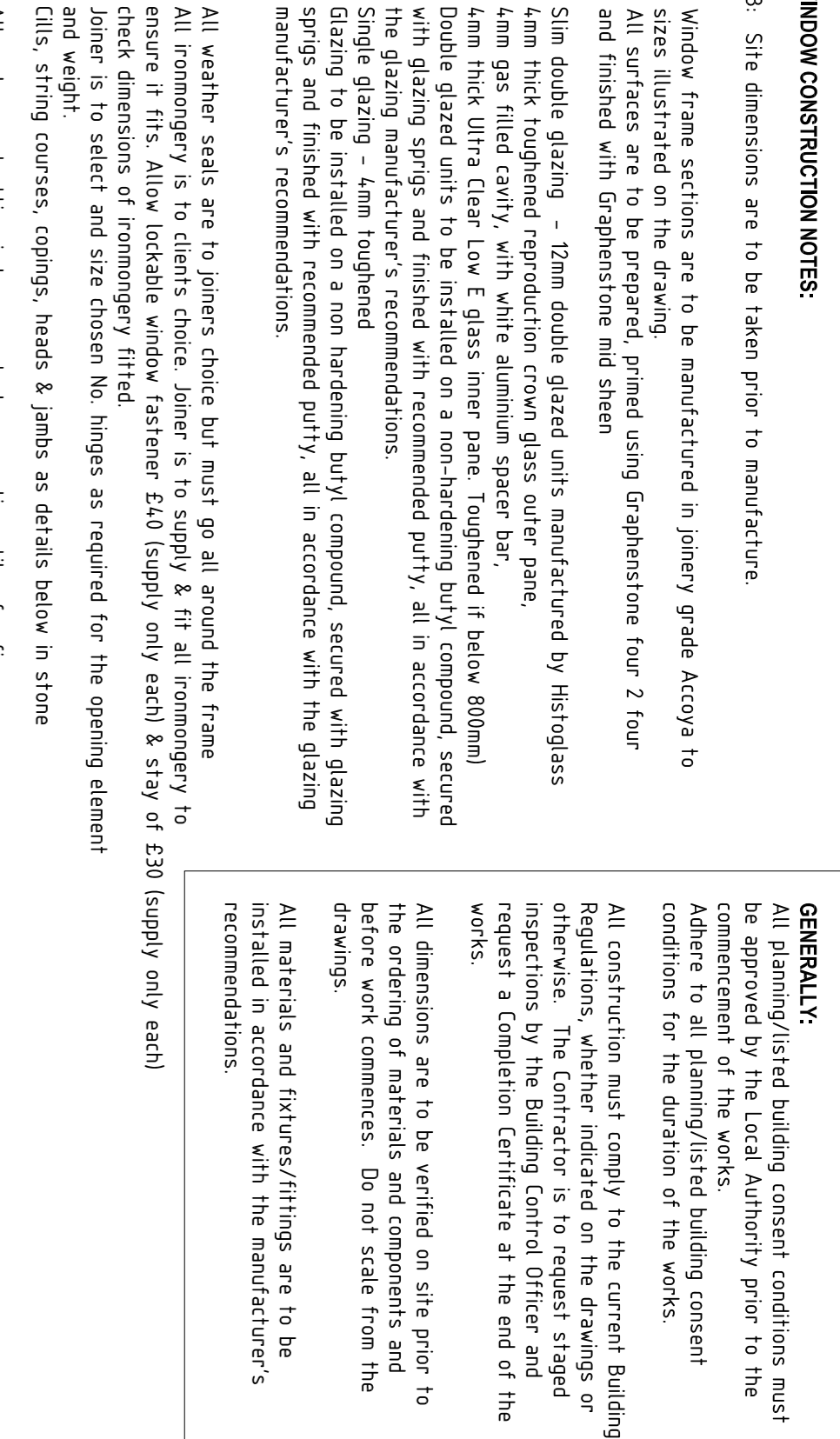
WS02



WG03



WS03



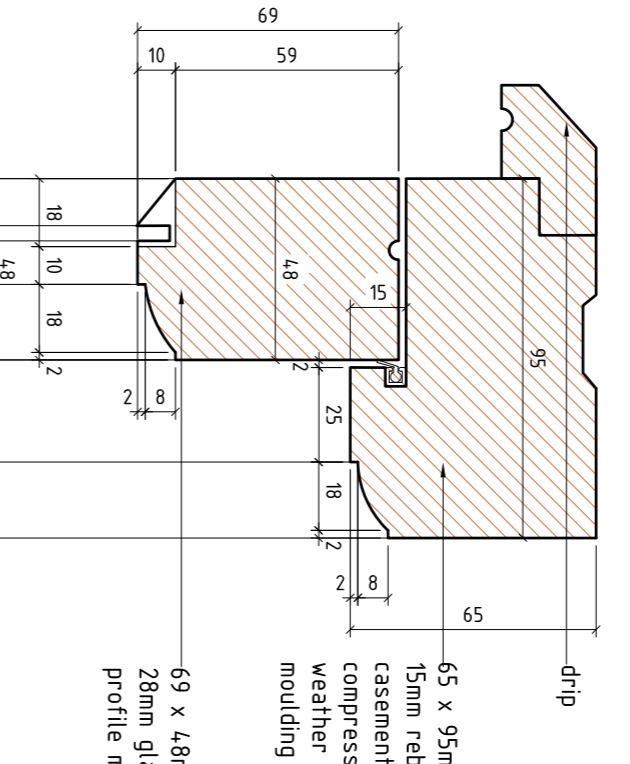
WS04

Note: all window sizes are approximate and openings must be measured on site prior to being made

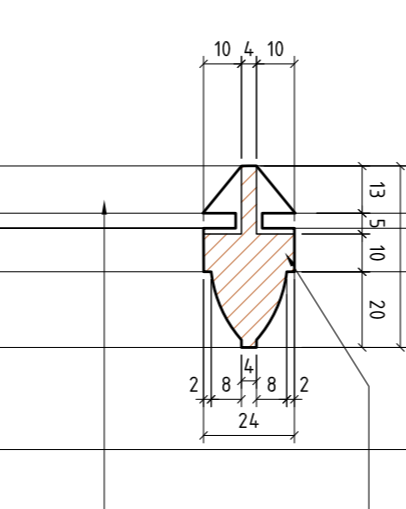
WINDOW CONSTRUCTION NOTES:

1. Window frame sections are to be manufactured in joinery grade Accoya to sizes illustrated on the drawing and prepared primed using Graphenstone four 2 four and finished with Graphenone mid sheen
2. Slim double glazing - 12mm double glazed units manufactured by histoglass 4mm thick toughened reproduction crown glass outer pane, 4mm gas filled cavity, with white aluminum spacer bar, 4mm thick ultra clear low E glass inner pane. Toughened if below 800mm Double glazed units to be installed on a non-hardening butyl compound, secured with glazing springs and finished with recommended putty, all in accordance with the glazing manufacturer's recommendations.
3. All weather seals are to joiners choice but must go all around the frame All ironmongery is to clients choice. Joiner is to supply & fit all ironmongery to ensure it fits. Allow lockable window fastener E50 (supply only each) & stay of E30 (supply only each) check dimensions of ironmongery fitted. Joiner is to select and size chosen No. hinges as required for the opening element and weight.
4. All replacement attic windows are to have meeting stiles for fire escape
5. All windows are to have drips around all frames and cills

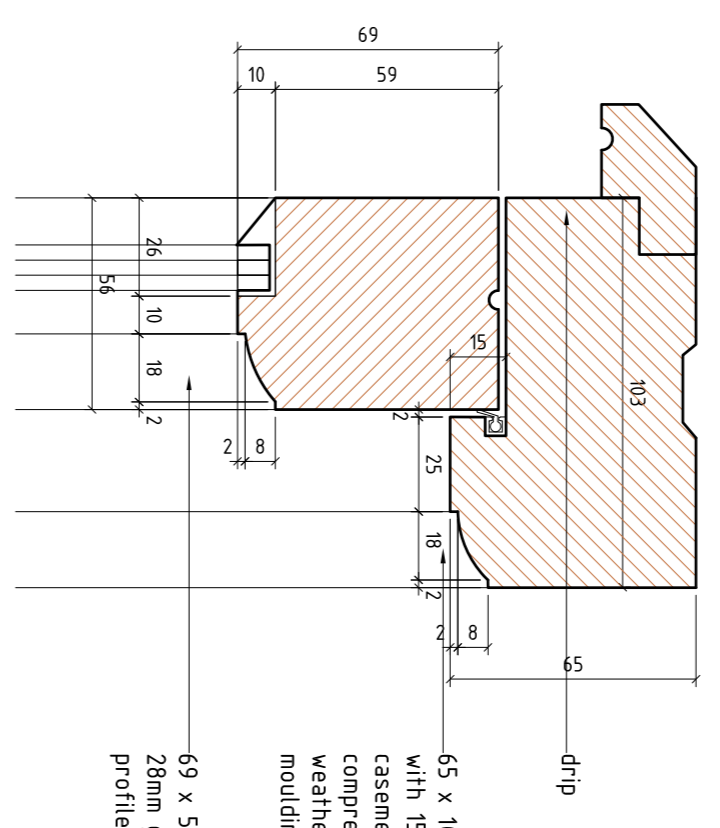
GENERALLY: All planning listed building consent conditions must be approved by the local authority prior to the commencement of the works. Adhere to all planning listed building consent conditions for the duration of the works. All construction must comply to the current Building Regulations, whether indicated on the drawings or otherwise. The contractor is to request staged inspections by the Building Control Officer and request a Completion Certificate at the end of the works. All dimensions are to be verified on site prior to the ordering of materials and components and before work commences. Do not scale from the drawings. All materials and fixtures/ fittings are to be installed in accordance with the manufacturer's recommendations.



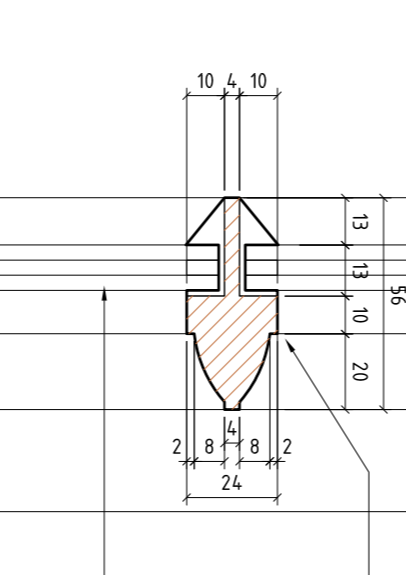
TYPICAL HEAD DETAIL (SINGLE GLAZING)



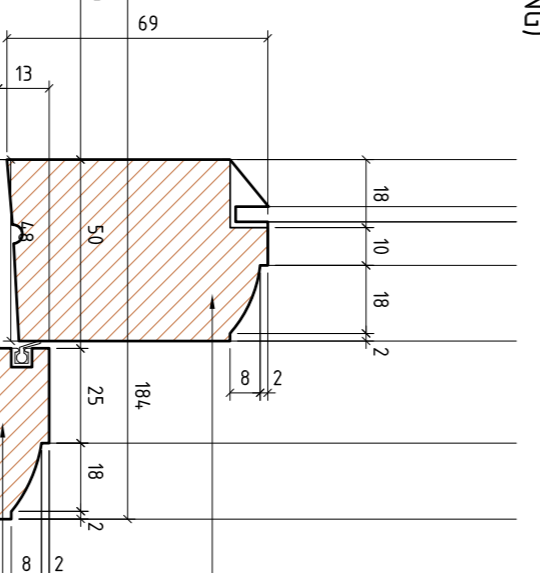
TYPICAL GLAZING BAR DETAIL (SINGLE GLAZING)



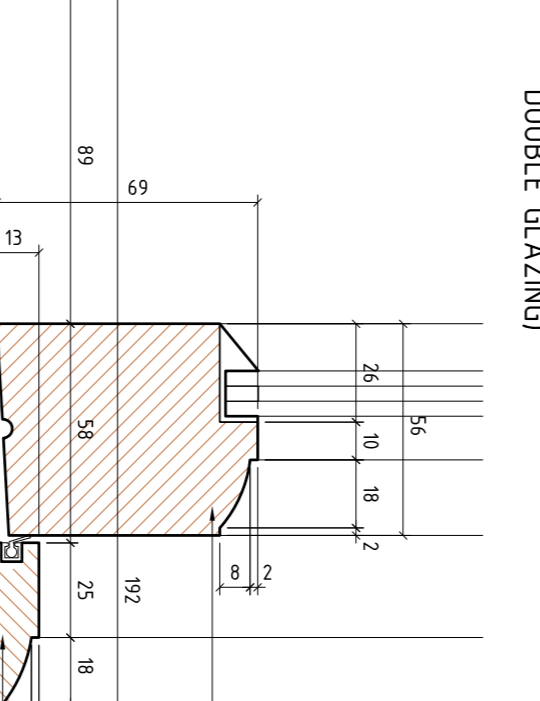
TYPICAL HEAD DETAIL (SLIM DOUBLE GLAZING)



TYPICAL GLAZING BAR DETAIL (SLIM DOUBLE GLAZING)



TYPICAL CILL DETAIL (SINGLE GLAZING)



TYPICAL CILL DETAIL (SLIM DOUBLE GLAZING)

12mm double glazed unit bedded in 1mm butyl all round, fixed with glazing springs and linsed oil putty.

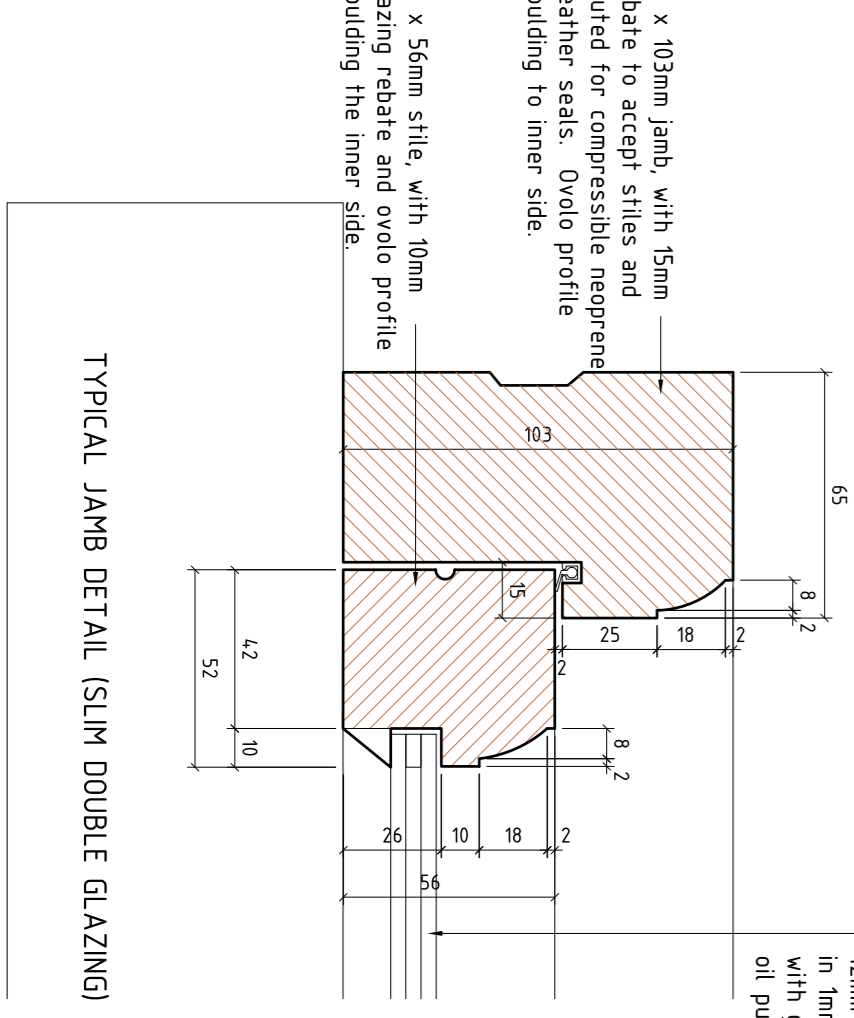
69 x 103mm stile, with 15mm rebates for stiles and routed for compressible neoprene weather seals. Ovoid profile mouldings to inner side.

56 x 64mm stile, with 12mm rebate to the meeting face and routed for compressible neoprene weather seal. 2mm wide shadow gap. 10mm wide rebate to accept double glazed unit. Ovoid profile moulding to inner side.

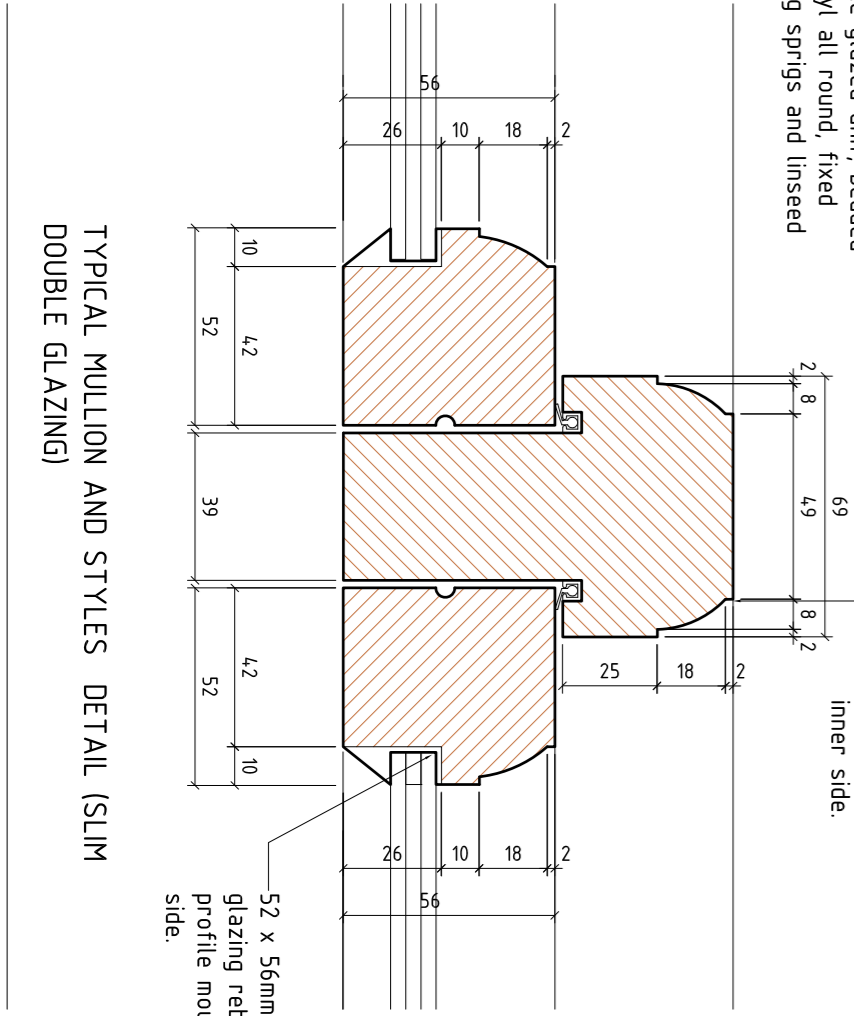
65 x 103mm jamb, with 15mm rebate to accept stiles and routed for compressible neoprene weather seals. Ovoid profile moulding to inner side.

69 x 148mm bottom rail, with 10 x 28mm glazing rebate and ovoid profile moulding the outer side. Underside sloped to the external face.

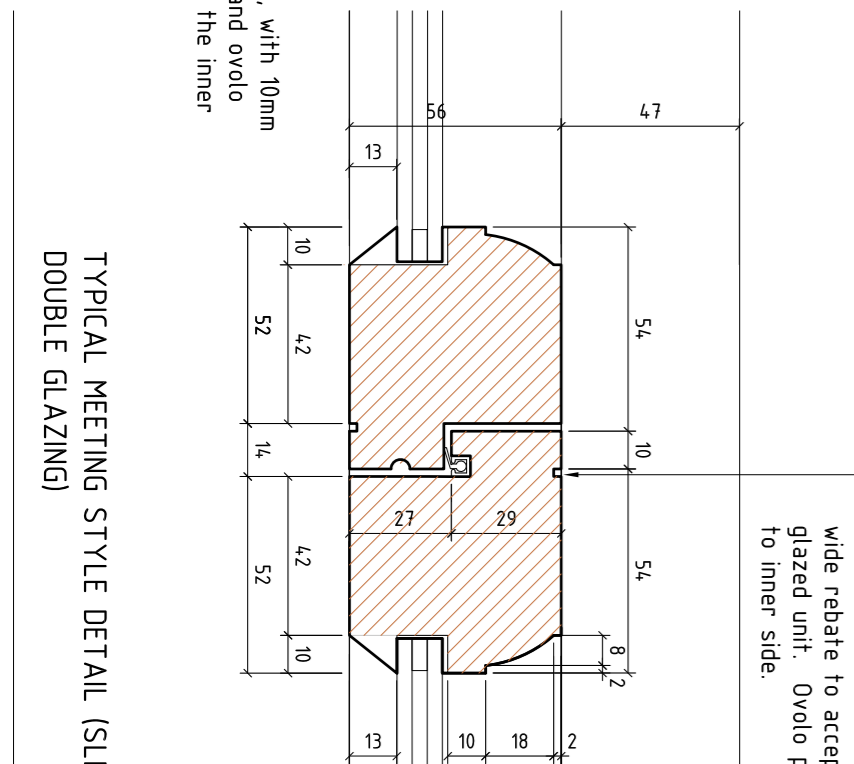
69 x 56mm bottom rail, with 10 x 28mm glazing rebate and ovoid profile moulding the outer side. Underside sloped to the external face.



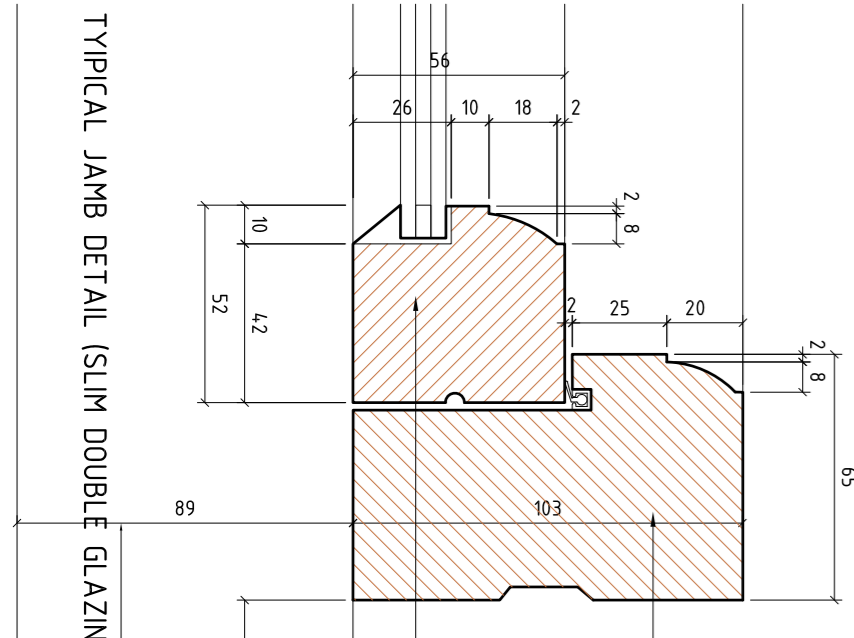
TYPICAL JAMB DETAIL (SLIM DOUBLE GLAZING)



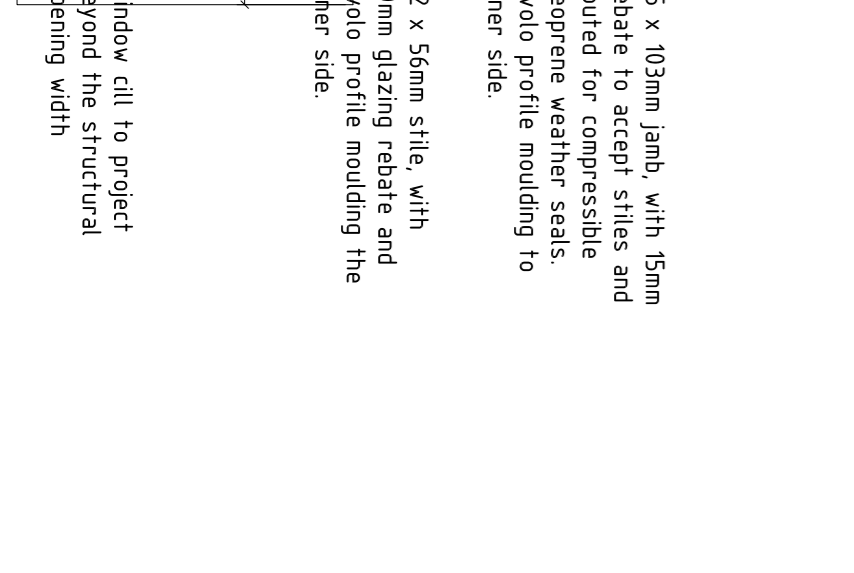
TYPICAL MULLION AND STYLES DETAIL (SLIM DOUBLE GLAZING)



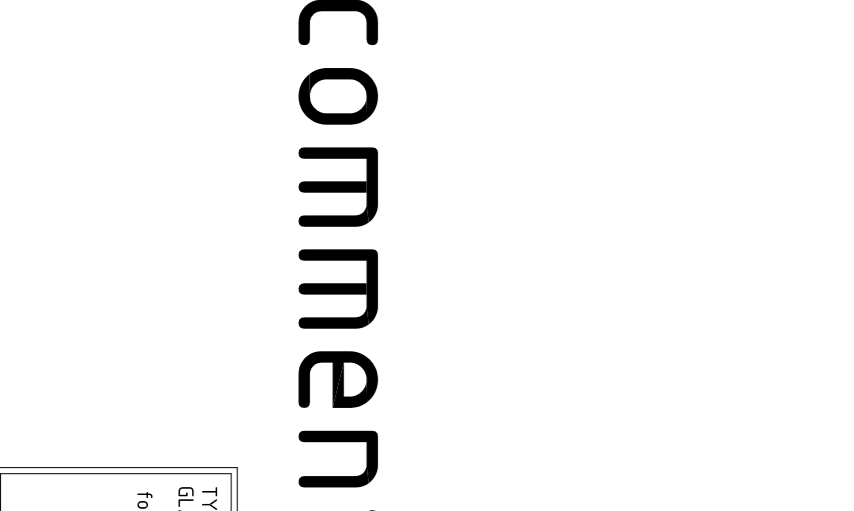
TYPICAL MEETING STYLE DETAIL (SLIM DOUBLE GLAZING)



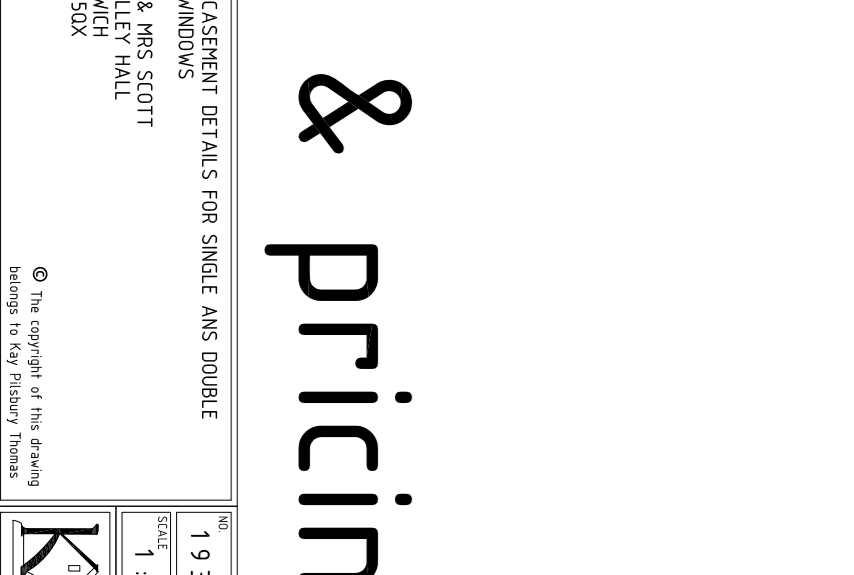
TYPICAL JAMB DETAIL (SLIM DOUBLE GLAZING)



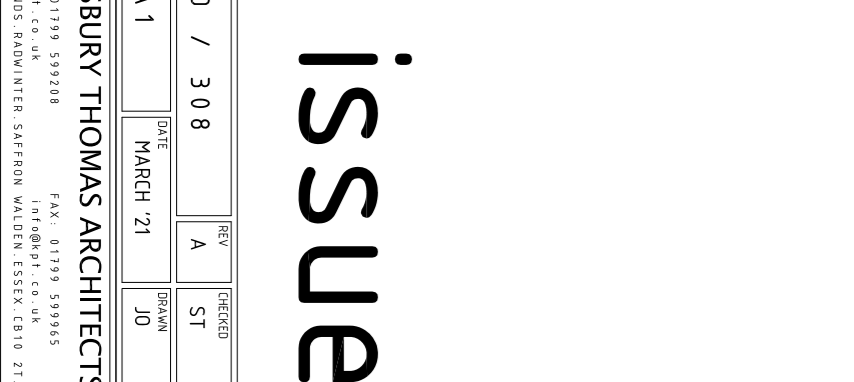
TYPICAL CILL DETAIL (SINGLE GLAZING)



TYPICAL GLAZING BAR DETAIL (SINGLE GLAZING)



TYPICAL HEAD DETAIL (SLIM DOUBLE GLAZING)



TYPICAL GLAZING BAR DETAIL (SLIM DOUBLE GLAZING)

comment & pricing issue

TYPICAL CASERMENT DETAILS FOR SINGLE AND DOUBLE GLAZED WINDOWS

1938	/	WD	/	308
1	:	20	@	A1
REV	DATE	BY	ISSUED	
A	21	A	ST	
10	MARCH	21	20	

for MR & MRS SCOTT
SHELLEY HALL
171 LANE STREET
P1 5SD

© The Right of the Drawings
KAV PISBURY THOMAS ARCHITECTS
15A LANE STREET
HARRINGTON NORTHAMPTON NN16 9JL
01603 252222