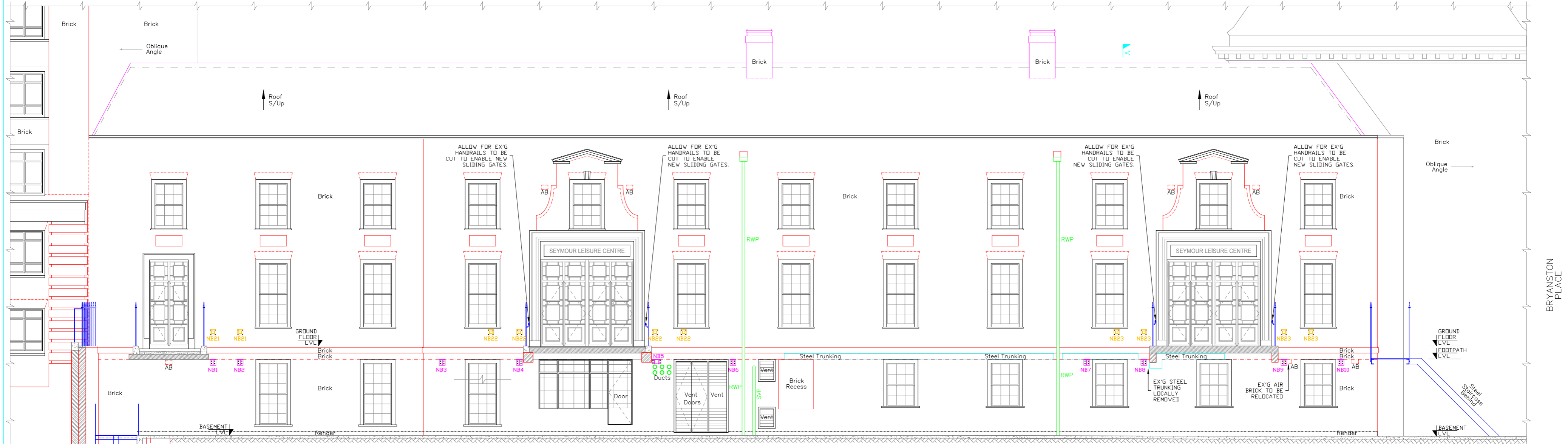


FRONT ELEVATION AS PROPOSED
(SCALE 1:100(A2), 1:200(A4))



ELEVATION B-B AS PROPOSED
(SCALE 1:100(A2), 1:200(A4))

GENERAL NOTES

- DO NOT SCALE THIS DRAWING. USE FIGURED DIMENSIONS ONLY. ANY ERRORS OR OMISSIONS ARE TO BE REPORTED TO THE ENGINEER IMMEDIATELY.
- ALL DIMENSIONS ARE IN MILLIMETERS UNLESS NOTED OTHERWISE.
- THIS DRAWING IS TO BE READ IN CONJUNCTION WITH ALL RELEVANT ENGINEERS DRAWINGS, SPECIFICATIONS AND SCHEDULE OF WORKS.
- TM=TELECOM MANHOLE; CB=CONTROL BOX; MH=MANHOLE; D=DRAIN; RWP=RAIN WATER PIPE; SWP=SOIL VENT PIPE; SV=SLUICE VALVE; RS=ROAD SIGN; LP=LAMP POST; ER=EARTHING ROD;

STEELWORK LEGEND:

NB1-NB10 - NEW PRIMARY SUPPORT STEEL BEAMS; RESIN ANCHOR FIXED BETWEEN MAIN FRONT WALL AND LIGHT WELL WALL VIA PSx.

NB11-NB15 - NEW SECONDARY SUPPORT STEEL BEAMS; BOLTED BETWEEN PRIMARY SUPPORT STEEL BEAMS.

NB21-23 - NEW STEEL BRACING BEAMS AT MIDDLE HIGH LEVEL; INSTALLED BETWEEN SUPPORT STEEL POSTS AND MAIN FRONT WALL. RESIN ANCHOR BOLT TO MAIN FRONT WALL; STEEL CONNECT TO SUPPORT STEEL POSTS.

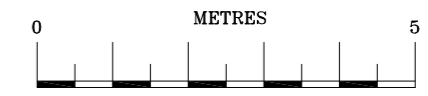
NB24-26 - NEW STEEL BRACING BEAMS AT HIGH LEVEL; STEEL CONNECTED BETWEEN SUPPORT STEEL POSTS.

PSx - NEW MASS CONCRETE PADSTONES; INSTALLED WITHIN THE LIGHT WELL WALL.

NOTES:

- ALL NEW STEELWORK TO BE GALVANISED; DOUBLE PRIMED AND PAINTED BLACK TO MATCH THE EX'G.
- HEIGHT OF EXISTING RAILING - 1550mm.
- HEIGHT OF PROPOSED RAILING GATES - 2300mm.

PLANNING ISSUE



CLIENT	WCC
PROJECT	SEYMOUR LEISURE CENTRE 35 SHOULDHAM STREET LONDON W1H 5FP
DRAWING TITLE	FRONT ELEVATION AT SHOULDHAM STREET SIDE & SECTION B-B AS PROPOSED.
DATE	APRIL '21
SCALE	AS SHOWN
DRAWN BY	21027
CHECKED BY	R.M.
APPROVED BY	P.A.B.