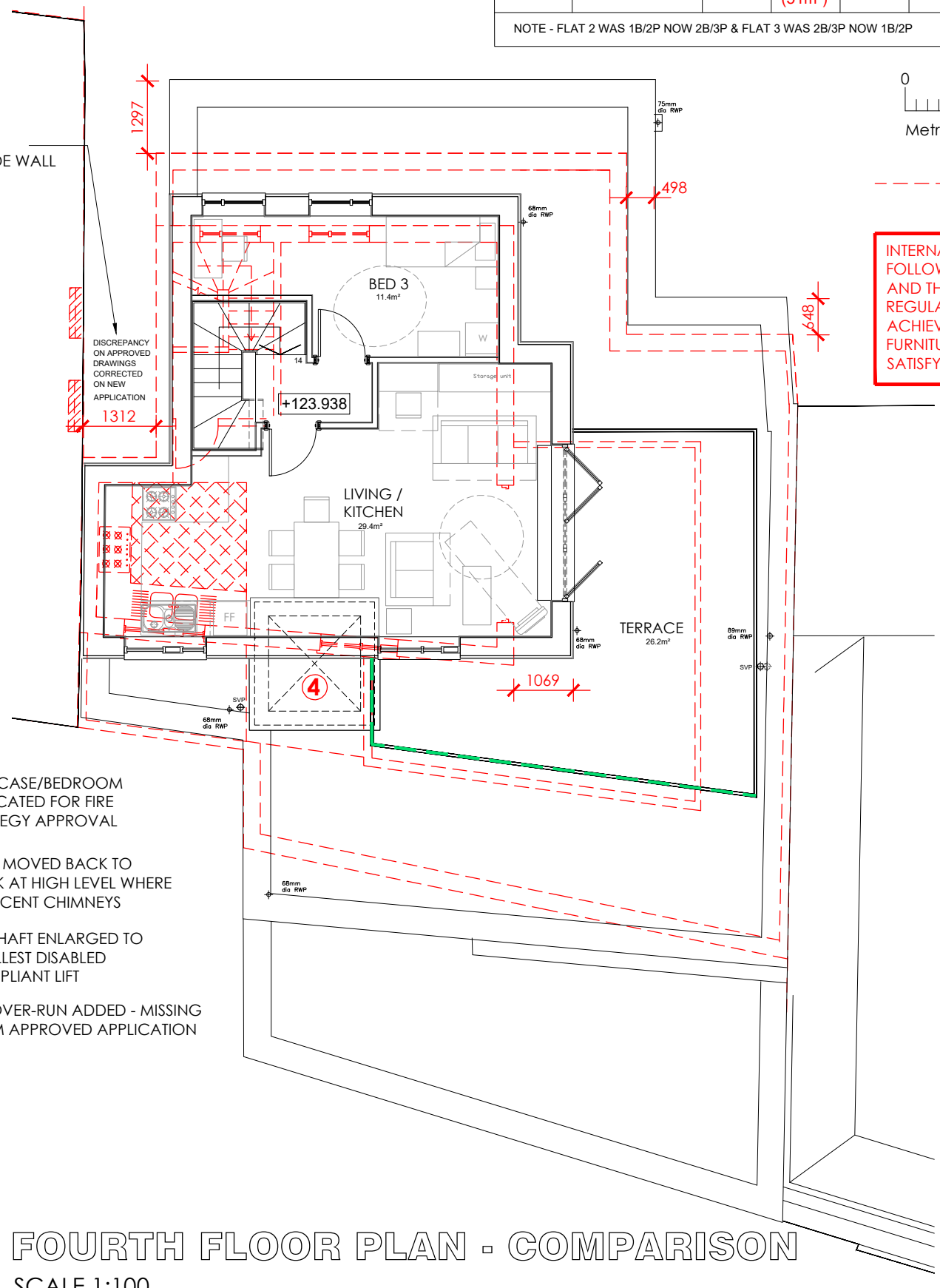
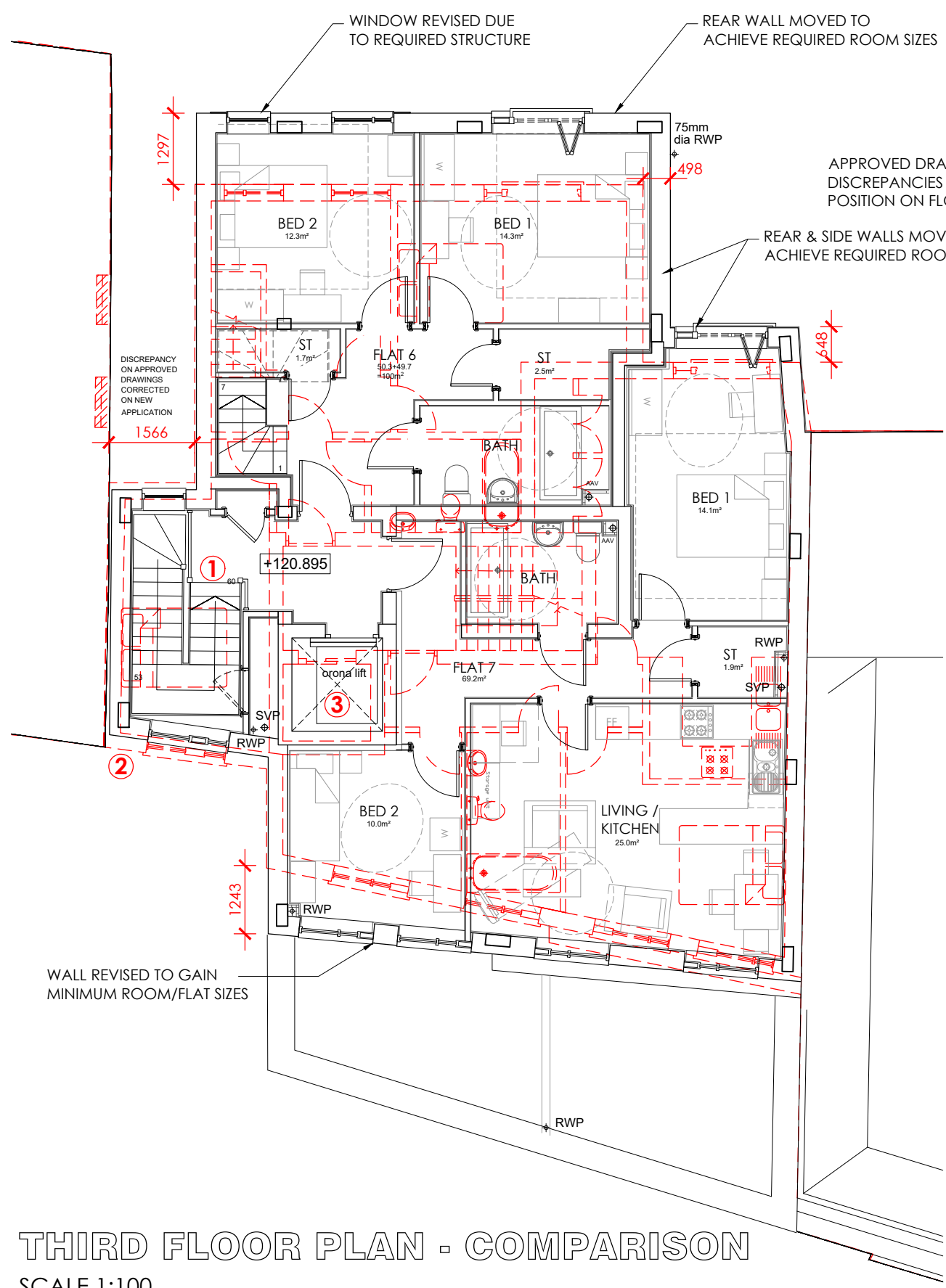
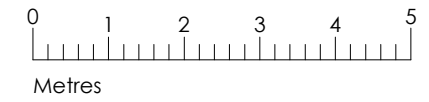


REFER TO DRAWING 7451-PD-202 FOR PROPOSED PLANS WITHOUT APPROVED SCHEME OVERLAY

| ACCOMMODATION SCHEDULE |                         |  |        |   |   |   |  |   |
|------------------------|-------------------------|--|--------|---|---|---|--|---|
|                        | LONDON PLAN REQUIREMENT | FLAT 1                                       | FLAT 2 | FLAT 3                                    | FLAT 4                                    | FLAT 5                                    | FLAT 6                                   | FLAT 7                                    |
| 3B/5P<br>TWO STOREY    | 93m <sup>2</sup>        | 107.8m <sup>2</sup><br>(96.5m <sup>2</sup> ) |        |   |   |   | 100m <sup>2</sup><br>(96m <sup>2</sup> ) |   |
| 1B/2P                  | 50m <sup>2</sup>        |  |        | 50m <sup>2</sup><br>(62m <sup>2</sup> )   | 50.3m <sup>2</sup><br>(51m <sup>2</sup> ) |   |  |   |
| 2B/3P                  | 61m <sup>2</sup>        |  |        | 62.3m <sup>2</sup><br>(51m <sup>2</sup> ) |   | 70.7m <sup>2</sup><br>(62m <sup>2</sup> ) |  | 69.2m <sup>2</sup><br>(61m <sup>2</sup> ) |

NOTE - FLAT 2 WAS 1B/2P NOW 2B/3P & FLAT 3 WAS 2B/3P NOW 1B/2P



- ① STAIRCASE/BEDROOM RELOCATED FOR FIRE STRATEGY APPROVAL
- ② WALL MOVED BACK TO WORK AT HIGH LEVEL WHERE ADJACENT CHIMNEYS
- ③ LIFT SHAFT ENLARGED TO SMALLEST DISABLED COMPLIANT LIFT
- ④ LIFT OVER-RUN ADDED - MISSING FROM APPROVED APPLICATION

THIRD FLOOR PLAN - COMPARISON  
SCALE 1:100

FOURTH FLOOR PLAN - COMPARISON  
SCALE 1:100

| Rev  | Date              | Comments    |
|--|-------------------|-------------|
| <b>PLANNING</b>  |                   |             |
| Client<br>AVF DEVELOPMENTS   |                   |             |
| Project<br>69-71 CHURCH ROAD<br>ANERLEY<br>CRYSTAL PALACE<br>SE19 2TA                    |                   |             |
| Title<br>PROPOSED PLANS<br>THIRD AND FOURTH<br>SHOWING COMPARISON WITH<br>APPROVED PLANS |                   |             |
| Project No.<br><b>7451</b>   | Date<br>JUNE 2021 |             |
| Drawing No.<br>7451-PD-212   | Revision          |             |
| Scale<br>1:100 @ A3  | Drawn<br>MN       | Check<br>RC |

Nepicor House, London Road, Waltham Heath, Kent, TN15 7RS  
 phone: 01732 753333  
 fax: 01732 753334  
 info@offsetarchitects.co.uk  
 www.offsetarchitects.co.uk