

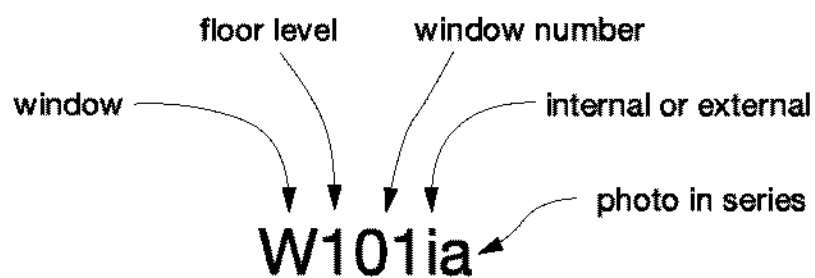
Building Recording - Ground Floor

External and Internal Windows

showing existing photos, noted location, frame condition, glass condition and proposed refurbishment works.

For the window location, please see the floor plans attached along with this building record.

Window Numbers:



Proposed External Windows

For the proposed replacement windows the following notes are to be taken into consideration

The previous estate manger (Bill) worked at glasbury house for over 30 years, in this time Bill note that all of the glazing in the building has been replaced apart from the top level of glass in the decorative window W108. Bill also noted that most of the windows in the house are not original, and in various states of condition.

A number of window noted for refurbishment only will have to be judge during the works to determine if the condition is such that they cannot be saved. It is also the intention to enable these windows to be openable again for ventilation and for a possible secondary fire escape option, which is not currently viable in the windows existing state of condition.

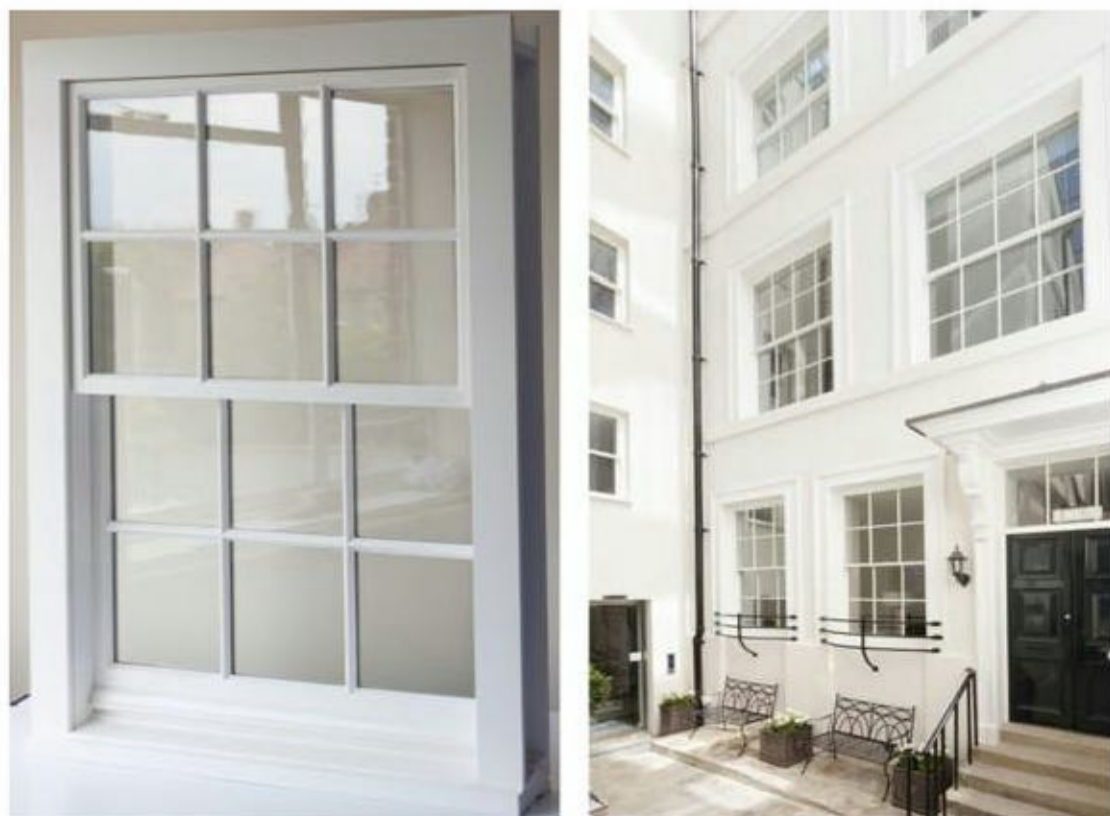
A third opinion has been sought from the window carpenter who has a significant experience in listed building works. They have also confirmed that the current set of windows are not original to the building and are not in a state to be simply refurbished. The fabricator has recommended the following proposed replacements.

The proposed glazing is to 14mm heritage slim cavity double glazing, which will look the same as the current single pane glazing.

The double glazing will be fire rated meaning that the glass will not need un attractive window films, the glass will also improve the security of the building and also increase the robustness of the building long in the future.

The other main advantage of the proposed glazing is that the energy usage and carbon foot print of the building will be greatly improved, helping with climate change and user comfort.

The proposed windows frames are to be painted timber sliding sash windows to match the existing, with 22mm bull nosed window bars and metal ironmongery.



Ground Floor External and Internal Windows



External Photo W001E



Internal Photo W001ia

Photo Location - South_Window Number **W001** - See floor plans for location



Frame Photo W001ib

Located with 1840's section of the building

Condition - Poor in need of refurbishment

Frame - Presumed Non Original

Glass - Presumed Non Original

Proposed works:

- Replacement window

it has been advised by a window restorer and fabricator that there is not enough good quality frame left to simply refurbish this window.

Ground Floor External and Internal Windows



External Photo W002E

Internal Photo W002ia

Photo Location - West_Window Number **W002** - See floor plans for location

Located with 1750's section of the building

Condition - Fair in need of refurbishment

Frame - Presumed Non Original

Glass - Presumed Non original

Proposed works:

· Replacement window

it has been advised by a window restorer and fabricator that there is not enough good quality frame left to simply refurbish this window.

19th of March 2021.

Ground Floor External and Internal Windows



External Photo W003E



Internal Photo W003ia

Photo Location - West_Window Number **W003** - See floor plans for location



Located with 1750's section of the building

Condition - Poor in need of refurbishment

Frame - Presumed Non Original

Glass - Presumed Non original

Proposed works:

· Replacement window

it has been advised by a window restorer and fabricator that there is not enough good quality frame left to simply refurbish this window.

Frame Photo W003ib

19th of March 2021.

Ground Floor External and Internal Windows



External Photo W004E



Internal Photo W004ia

Photo Location - West_Window Number **W004** - See floor plans for location



Frame Photo W004ib

Located with 1750's section of the building

Condition - fair in need of refurbishment

Frame - Presumed Non Original

Glass - Presumed Non Original

Proposed works:

· Replacement window

it has been advised by a window restorer and fabricator that there is not enough good quality frame left to simply refurbish this window.

19th of March 2021.

Ground Floor External and Internal Windows



External Photo W005Ea



Internal Photo W005Eb

Photo Location - East_Window Number **W005** - See floor plans for location



External Photo W005Ec

Continued on next page

Ground Floor External and Internal Windows



External Photo W005ia

Internal Photo W005ib

Photo Location - East_Window Number **W005** - See floor plans for location



Located with 1750's section of the building

Condition - fair in need of refurbishment

Frame - Presumed Non Original

Glass - Presumed Non Original

Proposed works:

- Refurbish and re paint only if possible

Frame Photo W005ic

19th of March 2021.

Ground Floor External and Internal Windows



External Photo W006Ea



Internal Photo W006Eb

Photo Location - East_Window Number **W006** - See floor plans for location



External Photo W006Ec

Continued on next page

Ground Floor External and Internal Windows



External Photo W006ia

Internal Photo W006ib

Photo Location - East_Window Number **W006** - See floor plans for location



Located with 1750's section of the building

Condition - fair in need of refurbishment

Frame - Presumed Non Original

Glass - Presumed Non Original

Proposed works:

- Refurbish and re paint only if possible

Frame Photo W006ic

19th of March 2021.

Ground Floor External and Internal Windows



External Photo W007E

Internal Photo W007ia

Photo Location - East_Window Number **W007** - See floor plans for location



Located with 1840's section of the building

Condition - Good

Frame - Presumed Non original

Glass - Presumed Non original

Proposed works:

- Refurbish and re paint, but this may need replacing if during the refurbishment that the window condition is too poor to enable refurbishment.

Frame Photo W007ib

19th of March 2021.

Ground Floor External and Internal Windows



External Photo W008E

Internal Photo W008i

Photo Location - East_Window Number **W008** - See floor plans for location

Located with 1990's section of the building

Condition - Good

Frame - Original

Glass - Original

Proposed works:

· Removed and replaced with a door way,
see proposed works pages.

Ground Floor External and Internal Windows



External Photo W009E

Internal Photo W009i

Photo Location - East_Window Number **W009** - See floor plans for location

Located with 1990's section of the building

Condition - Good

Frame - Original

Glass - Original

Proposed works:

- To be replaced in the future with more in keeping windows

Ground Floor External and Internal Windows



External Photo W010E

Internal Photo W010i

Photo Location - East_Window Number **W010** - See floor plans for location

Located with 1990's section of the building

Condition - Good

Frame - Original

Glass - Original

Proposed works:

· Removed and replaced with a door way, see proposed works pages.

Ground Floor External and Internal Windows



External Photo W011E

Internal Photo W011i

Photo Location - North_Window Number **W011** - See floor plans for location

Located with 1990's section of the building

Condition - Good

Frame - Original

Glass - Original

Proposed works:

- To be replaced in the future with more in keeping windows

Ground Floor External and Internal Windows



External Photo W012E

Internal Photo W012i

Photo Location - North_Window Number **W012** - See floor plans for location

Located with 1990's section of the building

Condition - Good

Frame - Original

Glass - Original

Proposed works:

- To be replaced in the future with more in keeping windows

Ground Floor External and Internal Windows



External Photo W013E

Internal Photo W013i

Photo Location - West_Window Number **W013** - See floor plans for location

Located with 1990's section of the building

Condition - Good

Frame - Original

Glass - Original

Proposed works:

- To be replaced in the future with more in keeping windows

Ground Floor External and Internal Windows



External Photo W014E



Internal Photo W014i

Photo Location - West_Window Number **W014** - See floor plans for location

Located with 1990's section of the building

Condition - Good

Frame - Original

Glass - Original

Proposed works:

- To be replaced in the future with more in keeping windows

Ground Floor External and Internal Windows



External Photo W015E

Internal Photo W015i

Photo Location - South_Window Number **W015** - See floor plans for location

Located with 1840's section of the building

Condition - Poor in need of refurbishment

Frame - Presumed Non Original

Glass - Insect mesh

Proposed works:

- Refurbish and re paint only if possible