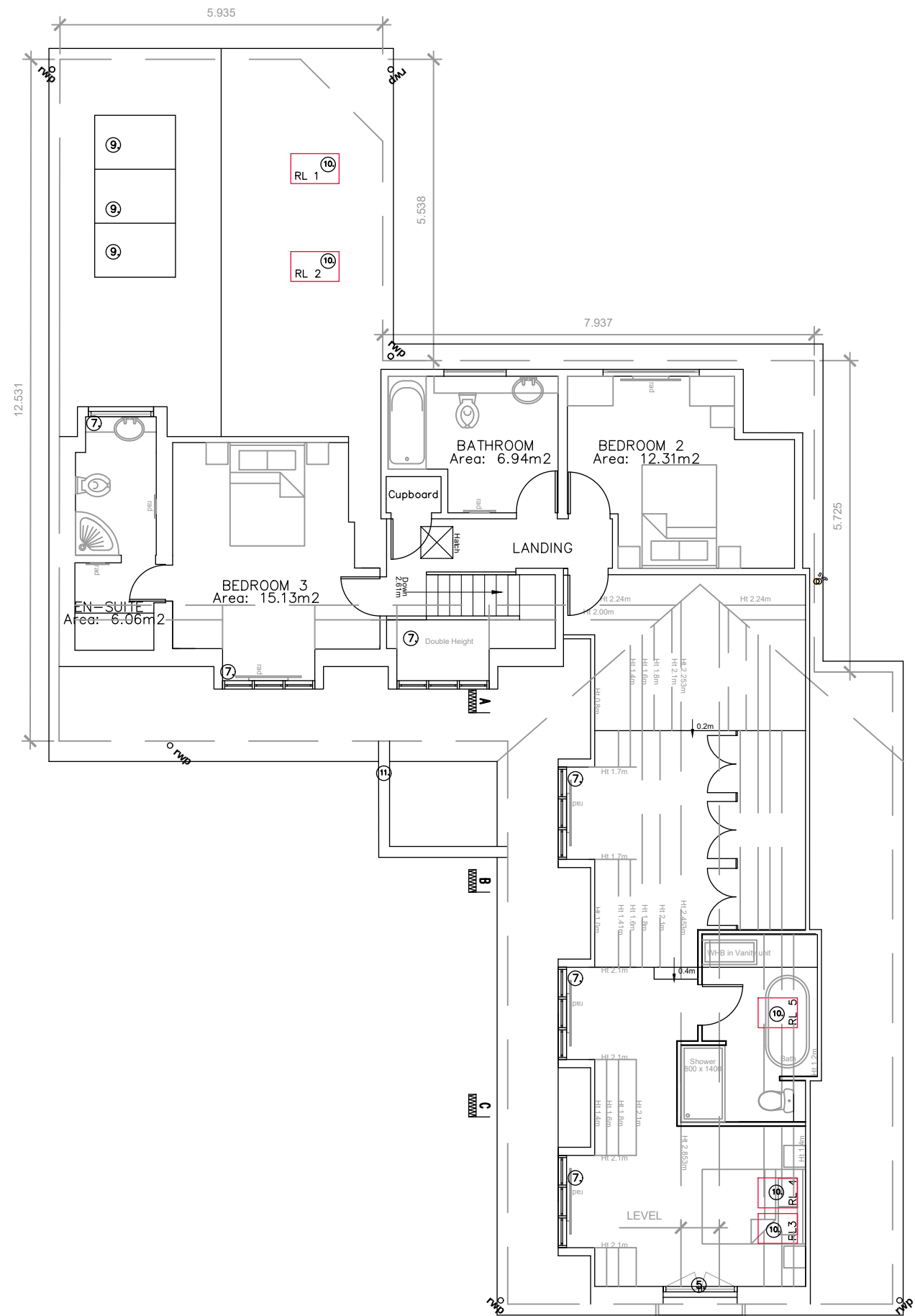


KEY FEATURES:

- 1.) REINSTATED BRICKWORK
(Colour: Dark Grey)
- 1a.) SOLDIER COURSE BRICK HEADER
(Colour: Dark Grey)
- 2.) RENDER
(Highly flexible silicone resin finish;
Colour: White
Product: ProRend Colourtex or similar approved)
- 3.) PAVED RAMP TO PORCH / REAR GARAGE DOOR
Aprox. level change of Porch 0.45 Garage Door 0.3
Pressed Concrete Slab
Dims: 750 x 600 x 50 mm
Supplier: Marshalls or similar approved
- 4.) TIMBER EFFECT CLADDING
(Colour: Beech effect
Supplier: HardiePlank or similar approved)
- 5.) JULIET BALCONY
(French balcony, 2-part complete set,
aluminium, mill finish;
Dims: 1370 x 2150 mm;
Frame Colour: Anthracite Grey)
- 6.) SINGLE GARAGE DOOR
Dims: 4000 x 2250
Colour: Dark Grey
Product: Sectional Garage Door
- 7.) DORMER WINDOWS
(PVC Flush Casement Windows;
Glass to be treated with solar reflective
film and to be coated with privacy film;
Dims: 1200 x 1050 mm;
Frame Colour: Anthracite Grey
Supplier: Modus or similar approved)
- 7a.) DORMER WINDOWS to include triangular apex
(PVC Flush Casement Windows;
Glass to be treated with solar reflective
film and to be coated with privacy film;
Dims: 1200 x 1050 mm;
Frame Colour: Anthracite Grey
Supplier: Modus or similar approved)
- 8.) ROOF TILE
(Dark Grey)
- 9.) SOLAR PV PANEL
(Monocrystalline Solar Panel 275 W 60 Cell;
Dims: 1640 x 992 mm;
Colour: Blue;
Supplier: Sandtoft or similar approved)
- 10.) ROOF LIGHT
(Centre-pivot roof window;
Dims: 550 x 980 mm;
Frame Colour: Anthracite Grey;
Obscure glazing to be provided for
Master Bedroom en-suite;
Supplier: Velux or similar approved)
- 11.) PARAPET WALL WITH STONE CAPPING
- 12a.) FRENCH DOOR
(UPVC Door,
Efficient 28mm Toughened Argon Filled Glass;
Frame Colour: Anthracite Grey;
Supplier: Modus or similar approved)
- 12b.) / 12.bb.) BI-FOLD DOOR (3 PANE)
(UPVC Bifold Door,
Efficient 28mm Toughened Argon Filled Glass;
Dims: b. 2857 x 2100 mm; bb. 2838 x 2100
Frame Colour: Anthracite Grey;
Supplier: Modus or similar approved)



Notes :

The Drawing must not be copied or reproduced in anyway whole or in part.

All work is to comply with current British Standard specifications Building Regulations and Statutory Authorities' regulations and particularly the requirements of the NHBC, whether specifically shown or not.

All units are in metres unless stated otherwise.

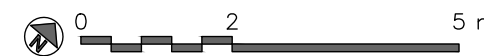
All RWP locations are indicative only and may therefore vary. Please ensure that site layout / handing is checked thoroughly on site.

All dimensions and levels must be checked on site and any discrepancies reported immediately. Written dimensions to be taken in preference to scaling.

This drawing is for Design intent / principles only at Planning stage. More detailed drawing and technical information will need to be co-ordinated prior to construction on site in conjunction with a specification, Structural Engineer's details and other specialists drawings required.

This drawing should be read in conjunction with all other drawings and documents submitted as part of this application.

PROPOSED FIRST FLOOR PLAN



D	Velux arrangement amended	30.06.21
C	Velux arrangement amended	04.01.21
B	Velux arrangement amended	02.01.21
A	Stairs amended	28.12.20
Rev.	Description	Date

22 Main Street, Kinoultou - Proposed First Floor Plan