

DAYLIGHT STUDY

3, BRICK KILN COTTAGES

BURY ROAD

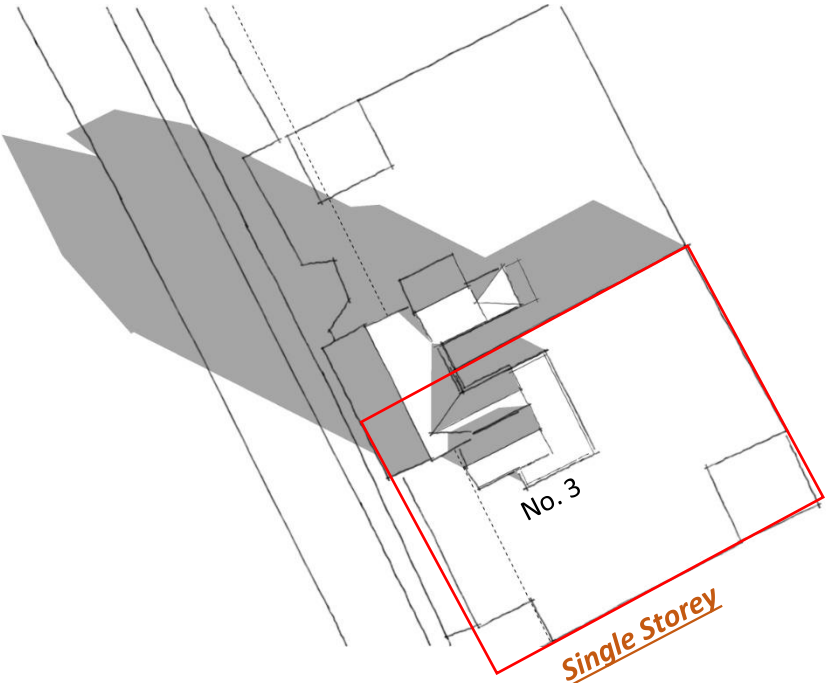
SICKLESMERE

BURY ST. EDMUNDS

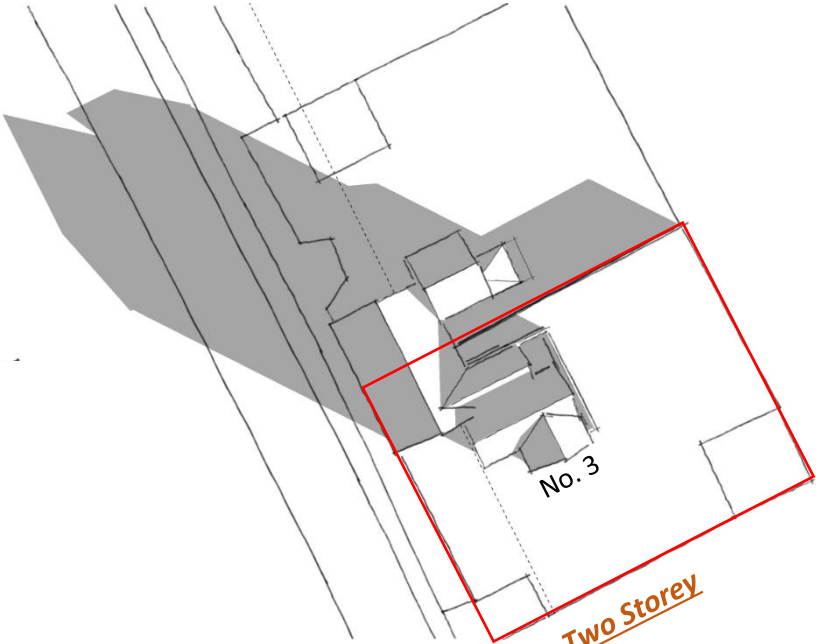
SUFFOLK, IP30 0BS

JUNE 2021

February 08:00



Single Storey



Two Storey

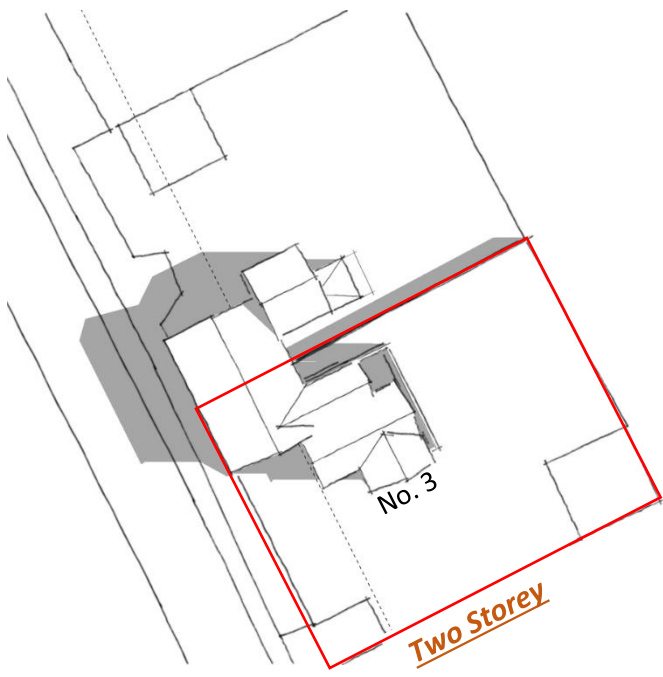
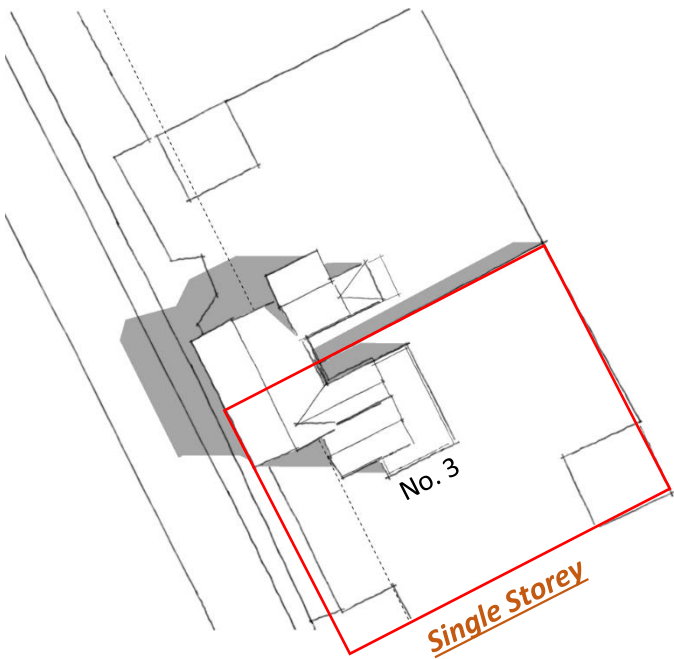
February 12:00



February 16:00



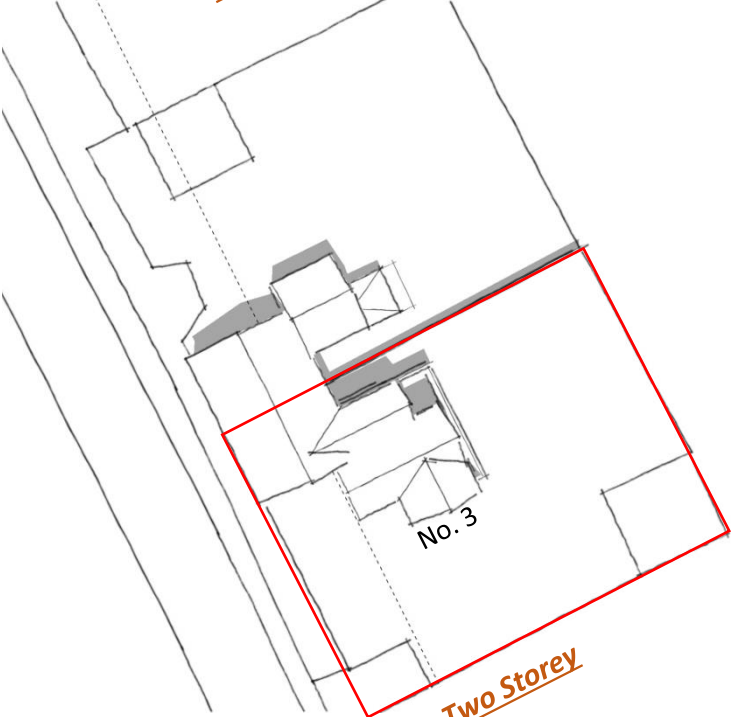
June 08:00



June 12:00

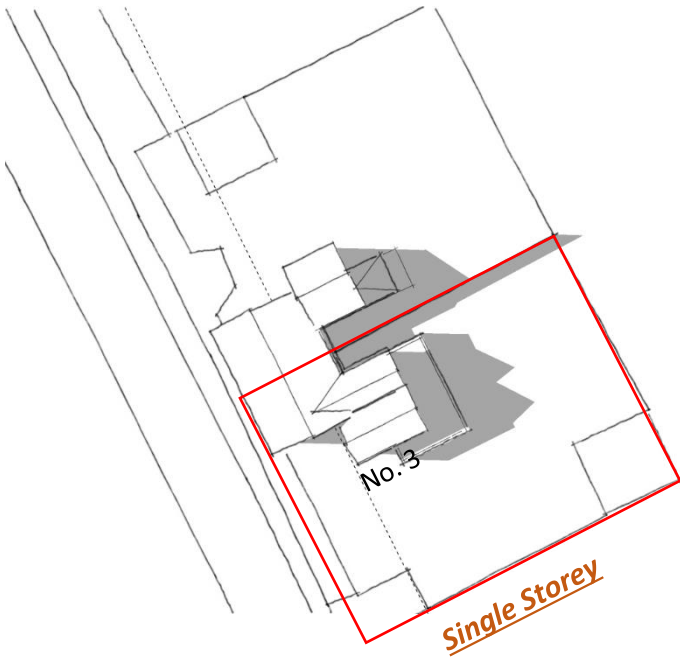


Single Storey



Two Storey

June 16:00



Single Storey



Two Storey

CONCLUSION :

The distance and set back from the adjoining property is substantial enough that the first storey has little to no impact. In each of the scenarios it is illustrated that no further shadows are created by the addition of the first storey.