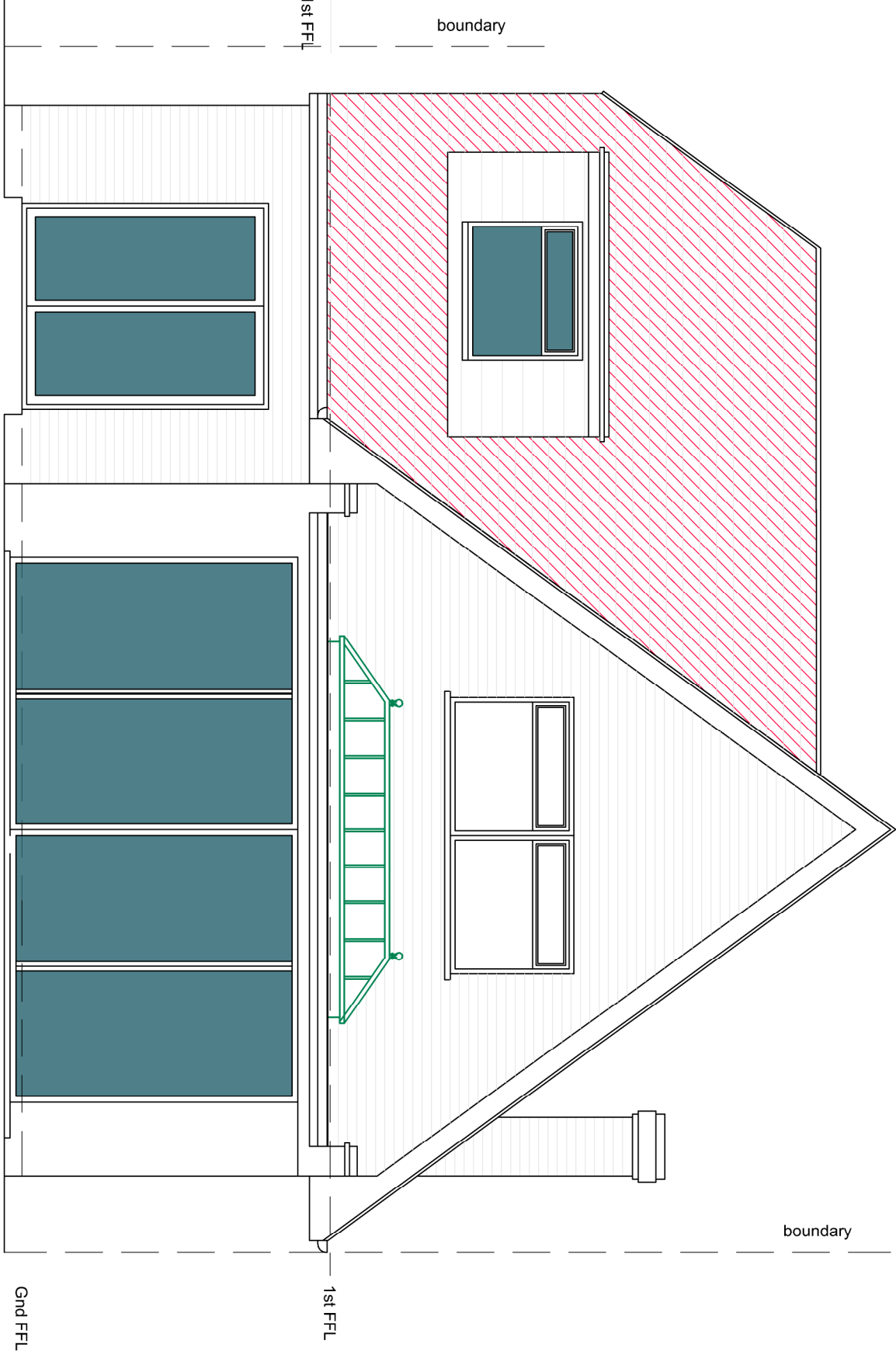
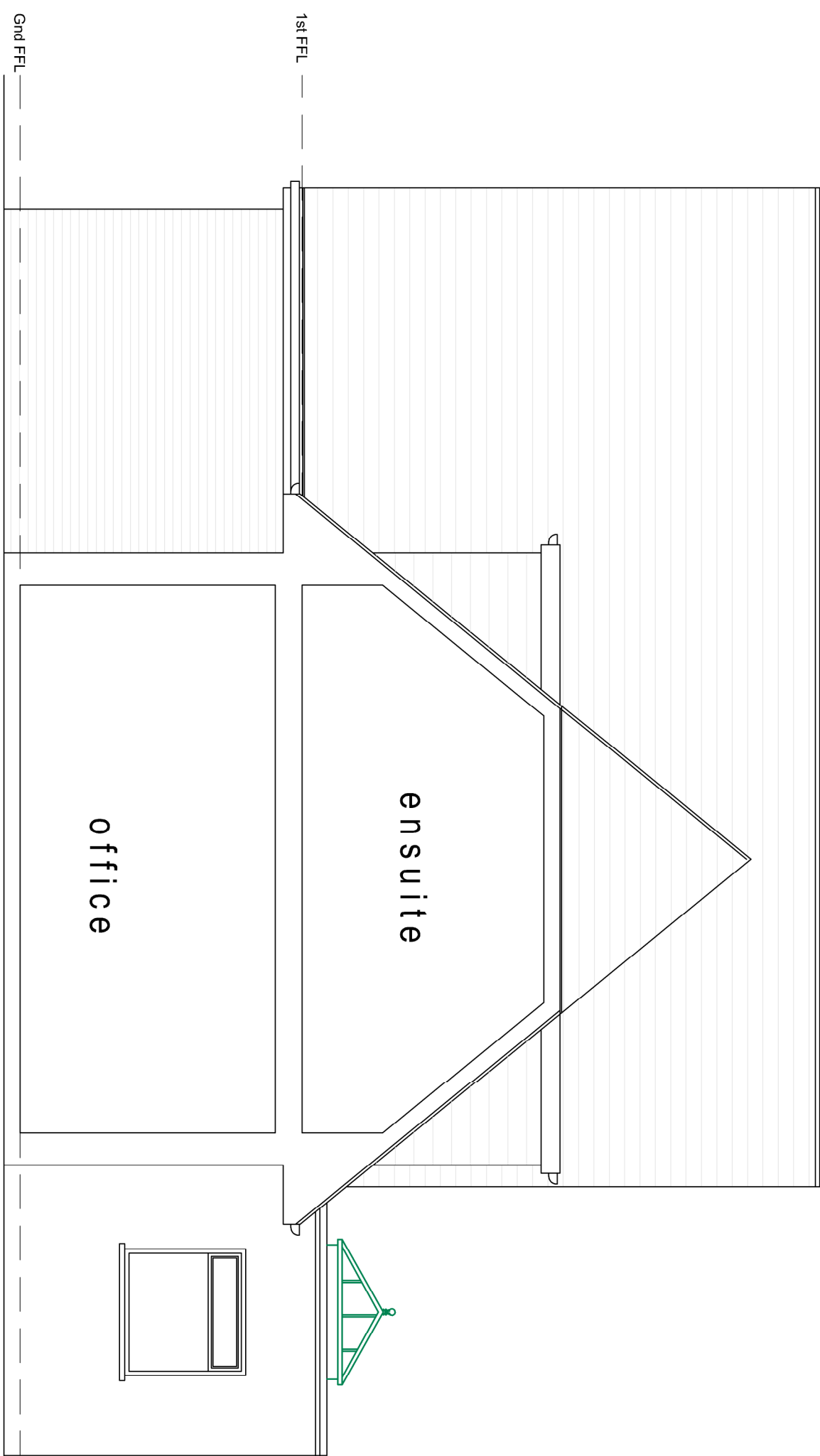
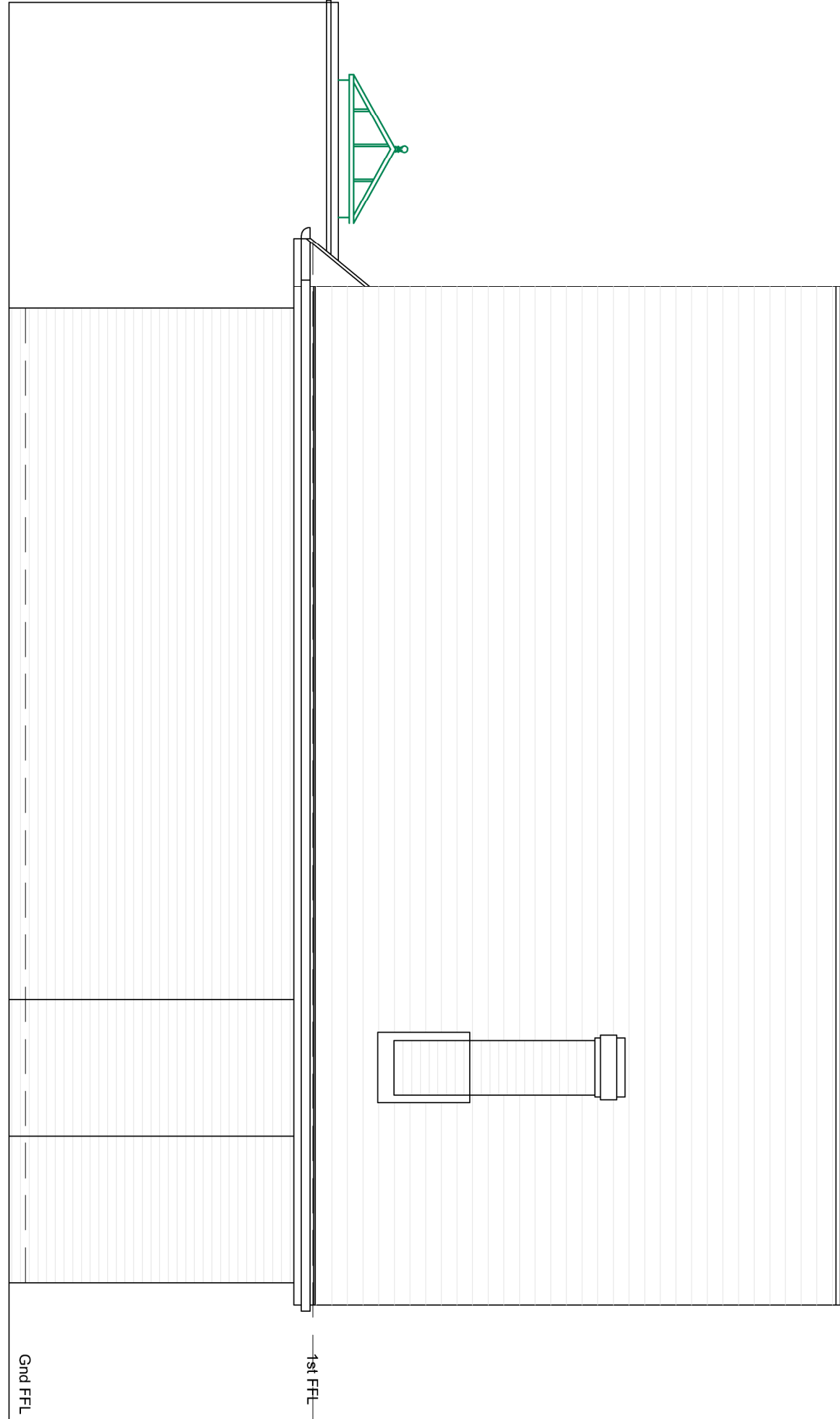
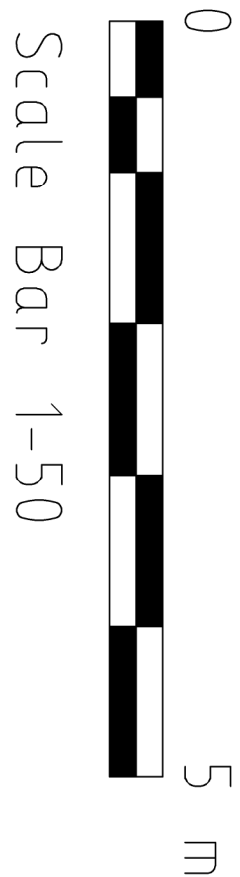
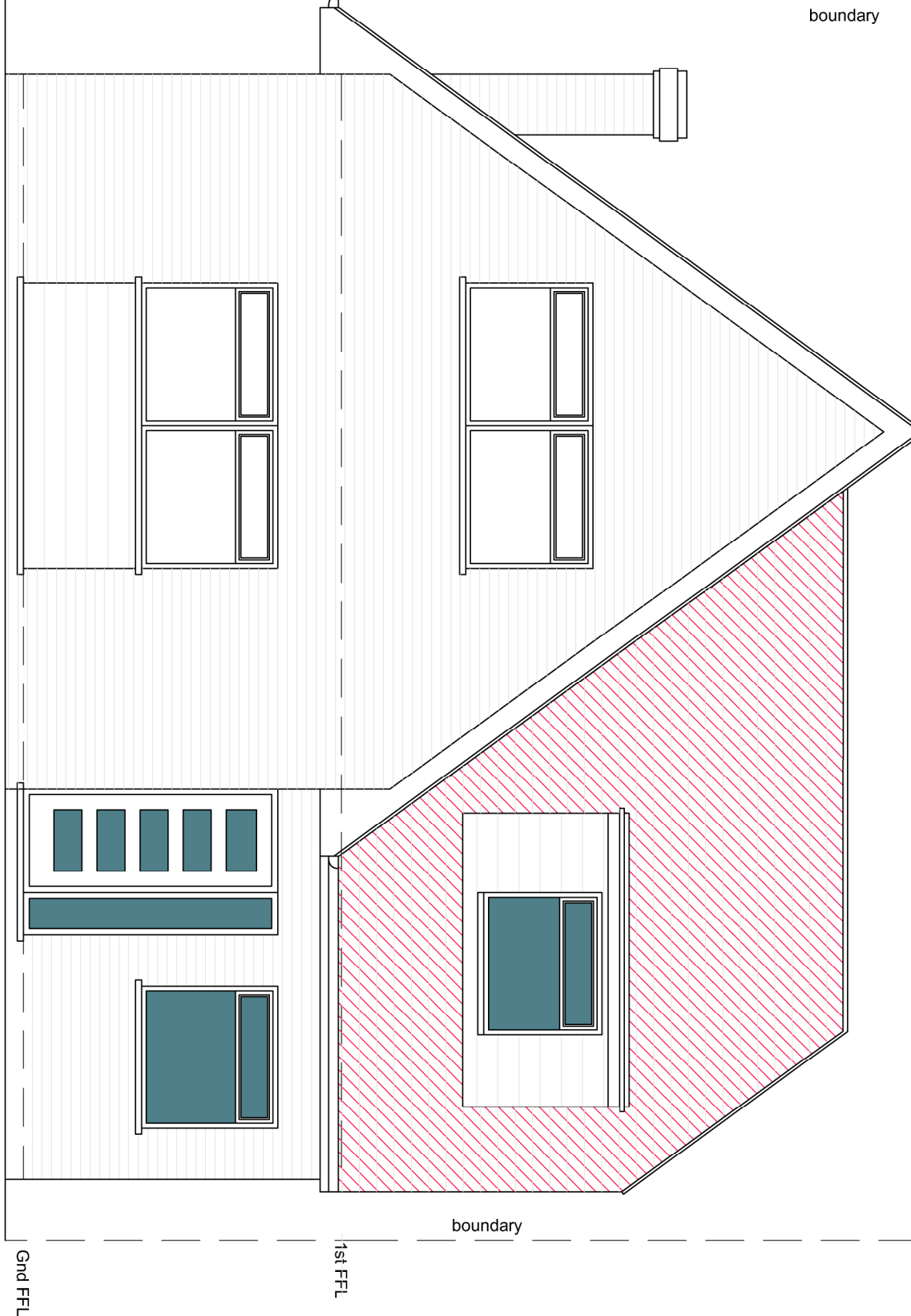
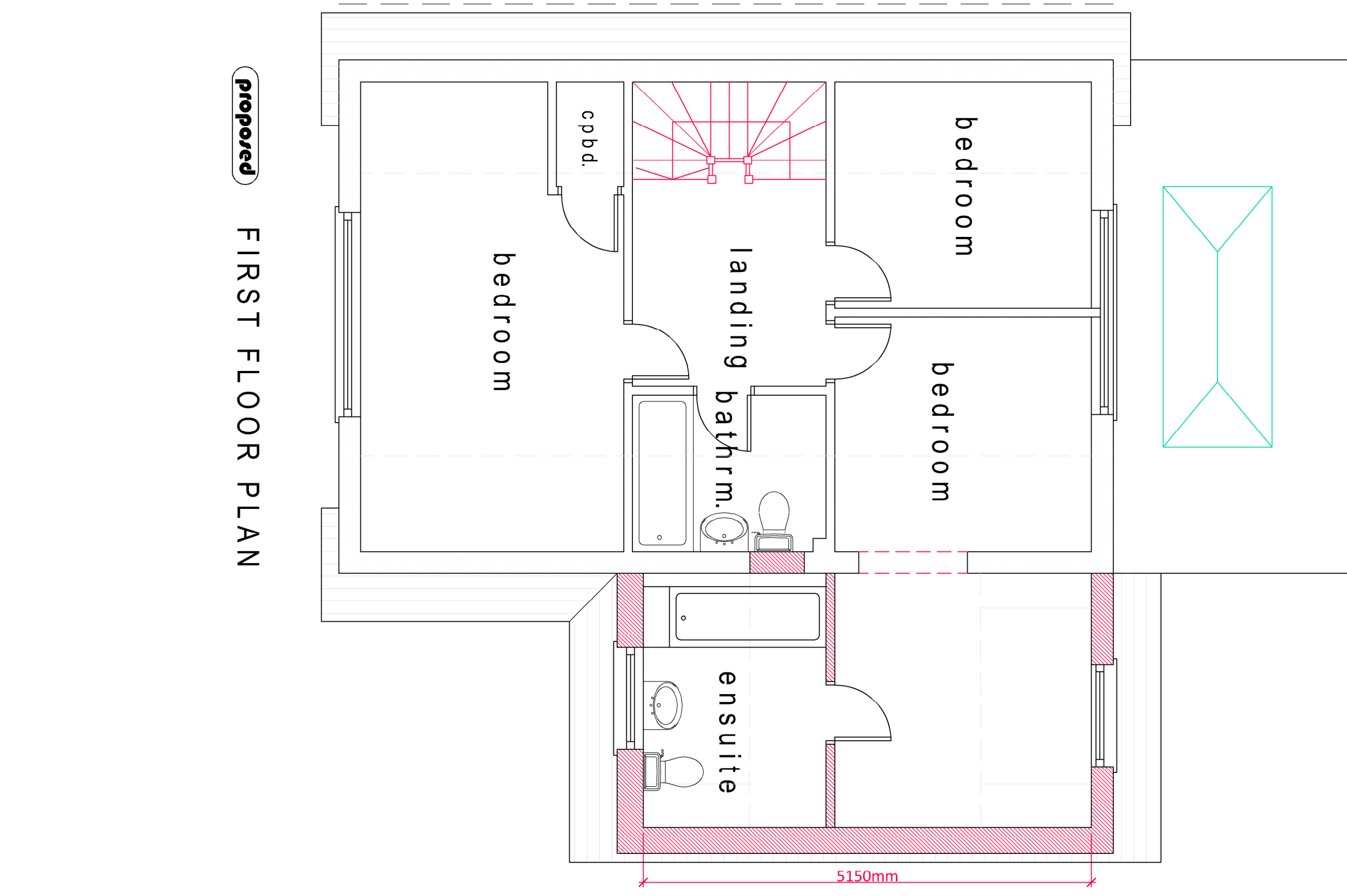
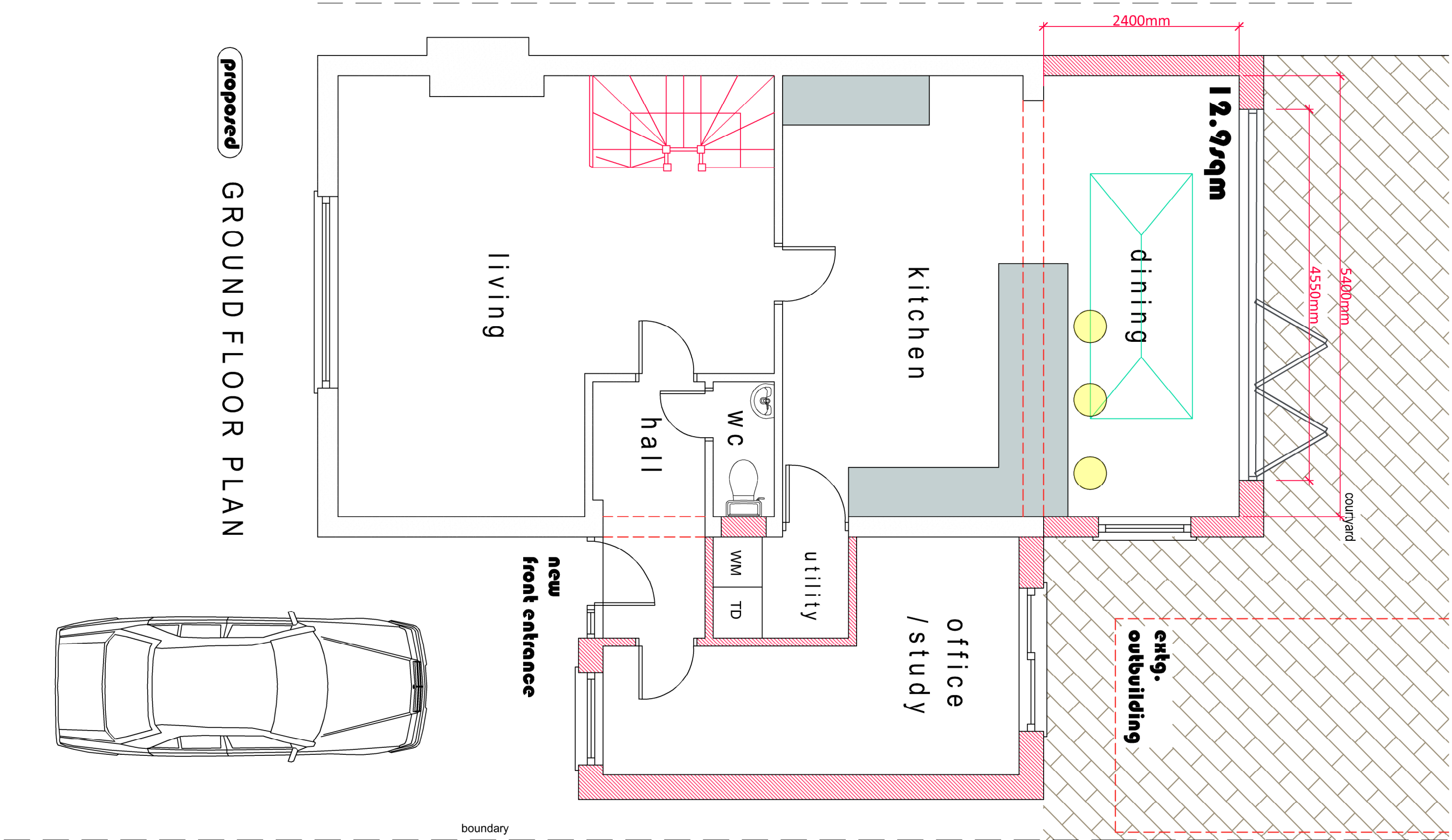


NOTE:  
THIS DRAWING HAS BEEN PRODUCED BY ELECTRONIC MEANS, SHOULD THE SCALE MEASUREMENTS BE TAKEN BY MEANS OTHER THAN ELECTRONIC (E.G. FROM A PRINTED COPY), THE FOLLOWING INFORMATION SHOULD BE TAKEN INTO CONSIDERATION:  
1. ENSURE THAT THE COPY HAS BEEN PRINTED/PLOTTED ON THE STATED SHEET SIZE AND THAT THE PRINTING/PLOTTING PROCESS HAS NOT INTRODUCED ANY UNWANTED DISTORTIONS.  
2. ENSURE THAT AN ADEQUATE ALLOWANCE (DEFENDANT ON THE STATED SCALE) IS MADE FOR THE INEVITABLE DISTORTIONS INTRODUCED BY PLOTTING/PRINTING AND COPYING PROCESSES.  
3. MARKED CRITICAL DIMENSIONS ARE TO BE REGARDED AS HAVING PRECEDENCE OVER THE SCALED VALUES.

Aluminium PGC 4 Door design  
Bi folding & sliding  
doors. Recess track mounted at  
base level. - colour to clients  
confirmation.  
2100mm high x 4450mm width  
(approx. - tbc by on site  
measurement)  
(N/A to fold or equal approved)  
Level entrance threshold  
required.  
Laminated toughened safety  
glass.



SIDE ELEVATION-SECTION

REAR ELEVATION

SIDE ELEVATION

FRONT ELEVATION