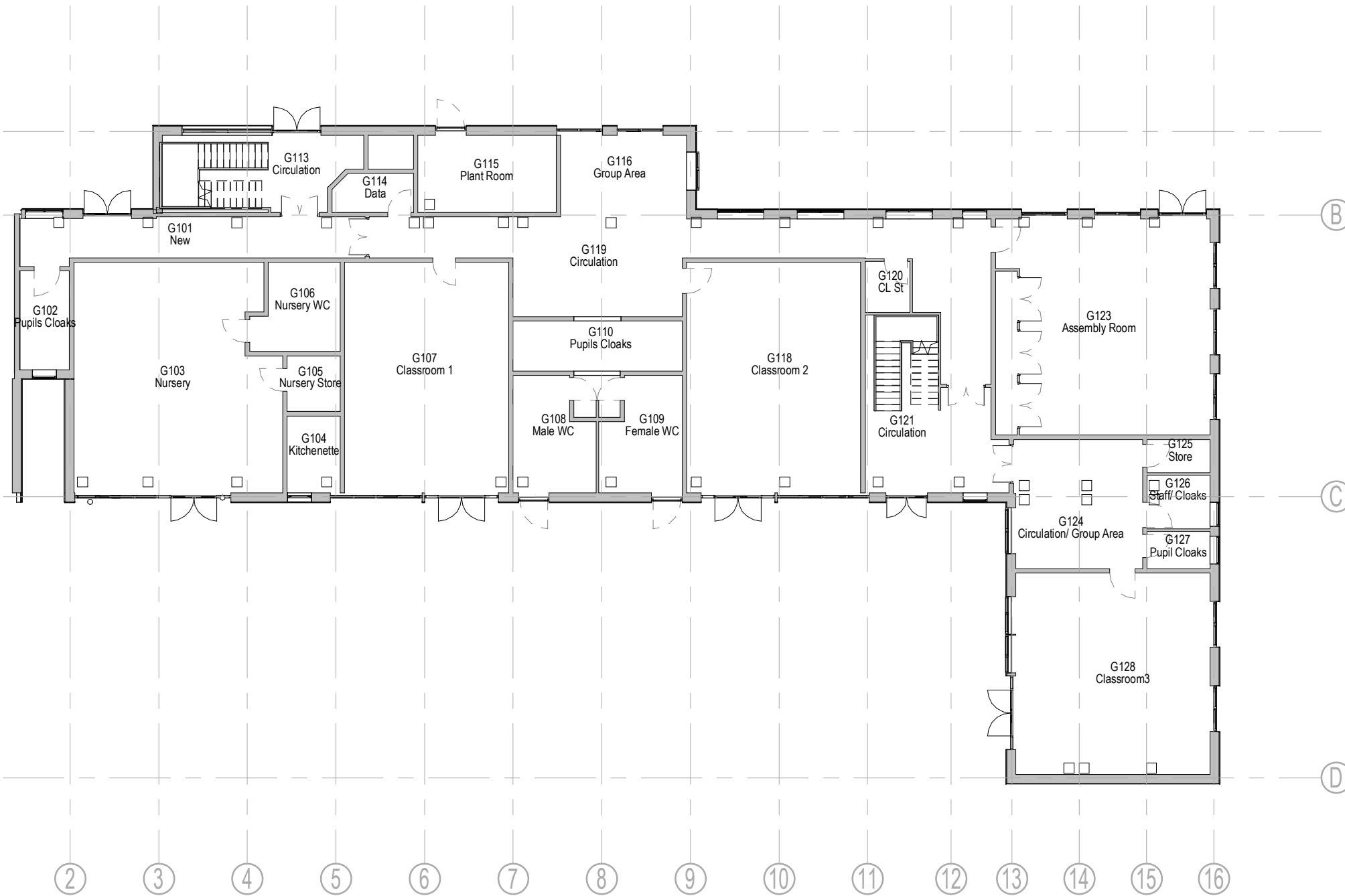


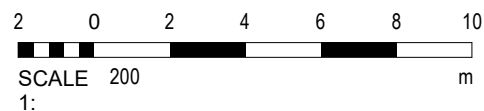
**NOTES**

Copyright: All rights reserved.  
 This drawing must not be reproduced without permission.  
 This drawing must not be scaled. Dimensions are in millimetres unless specified.



**1 | Level 00 Proposed**  
 1 : 200

P2	01.07.21	Amendments made in-line with comments from BJ Planning.	RM	EWA
P1	21.05.21	PLANNING	RM	EWA
REV	DATE	REVISION NOTE	BY	CHECK



Wellfield Chester Road Preston Brook WA7 3BA  
 T: +44 1928 752 200 E:info@ewa.co.uk

**SHEET SIZE: A3**

Orchid Vale Primary School- Re-Roofing

Level 00 - Proposed

2708\_ 10403

STATUS | PLANNING

DRAWN BY | OD

OV- EWA- ZZ- 00- DR- A- 10403

SCALE | 1 : 200

DATE | 07.05.21

REV P2