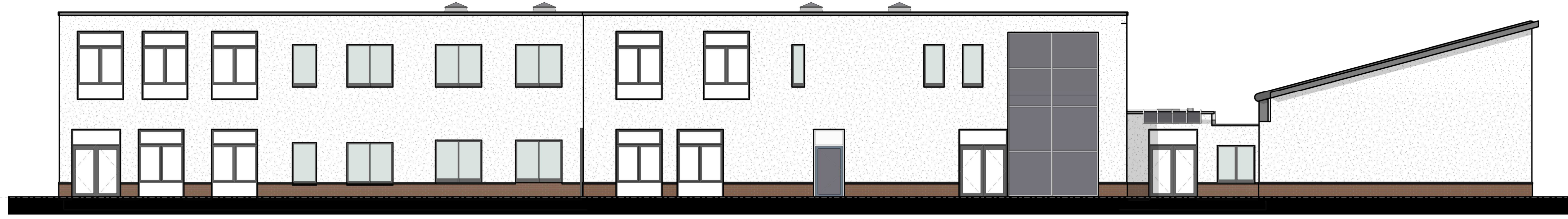
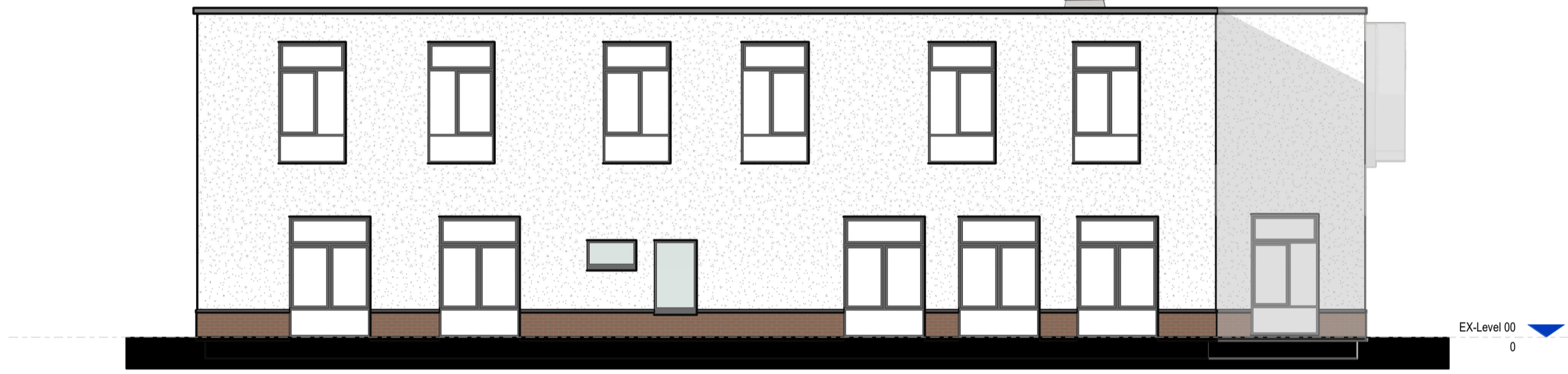


NOTES
 Copyright: All rights reserved.
 This drawing must not be reproduced without permission.
 This drawing must not be scaled. Dimensions are in millimetres unless specified.

1 Elevation - North
 1:100



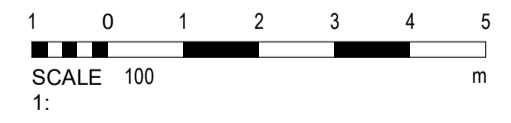
2 Elevation - South
 1:100



3 Elevation - East
 1:100



4 Elevation - West
 1:100



SHEET SIZE: A1

REV	DATE	REVISION NOTE	BY	CHECK

elliswilliams
 ARCHITECTS

Wellfield Chester Road Preston Brook WA7 3BA
 T: +44 1928 752 200 E: info@ewa.co.uk

Orchid Vale Primary School- Re-Roofing
 Existing Elevations
2708_10501 REV P2
 STATUS | PLANNING SCALE | 1:100
 DRAWN BY | 00 DATE | 07.05.21
 OV- EWA- ZZ- ZZ- EL- A- 10501