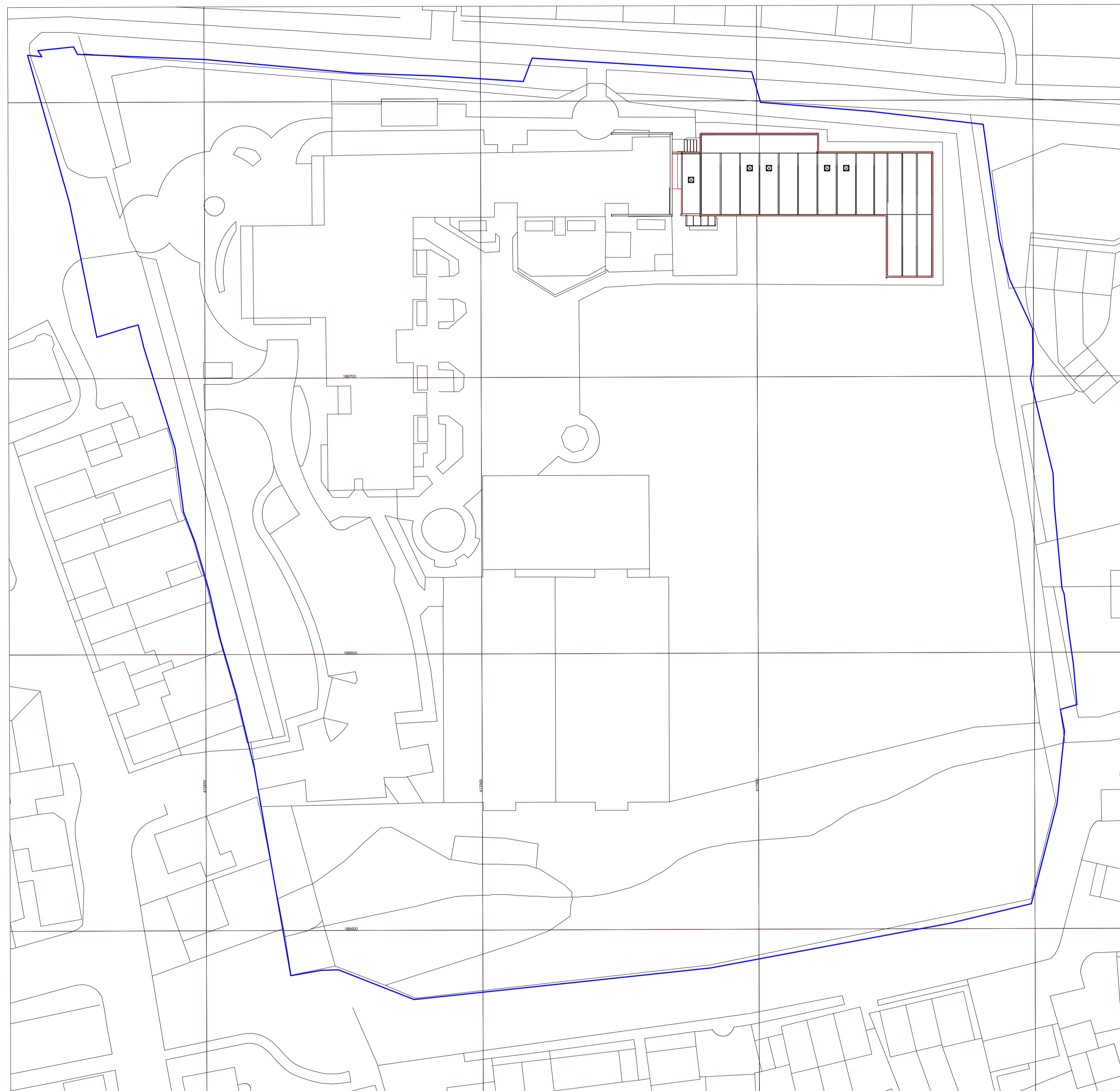


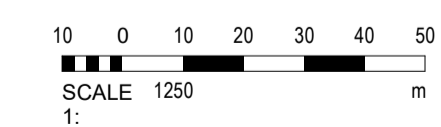
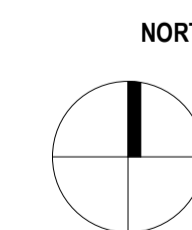
NOTES
 Copyright: All rights reserved.
 This drawing must not be reproduced without permission.
 This drawing must not be scaled. Dimensions are in millimetres unless specified.

KEY:

- EXTENT OF WORKS
- PROPERTY BOUNDARY



1 | Site Proposed
 1:500 @ A1



REV	DATE	REVISION NOTE	BY	CHECK
P2	01.07.21	Amendments made in line with comments from B1 Planning	RM	EWA
P1	21.05.21	PLANNING	RM	EWA

elliswilliams
 ARCHITECTS

Wellfield Chester Road Preston Brook WAT 3BA
 T: +44 1928 752 200 E: info@ewa.co.uk

Orchid Vale Primary School- Re-Roofing
 Proposed Site Plan
 2708_19001
 STATUS | PLANNING
 DRAWN BY | 00
 SCALE | As indicated
 DATE | 07.05.21

REV P2

OV- EWA- ZZ- ZZ- DR- A- 19001