

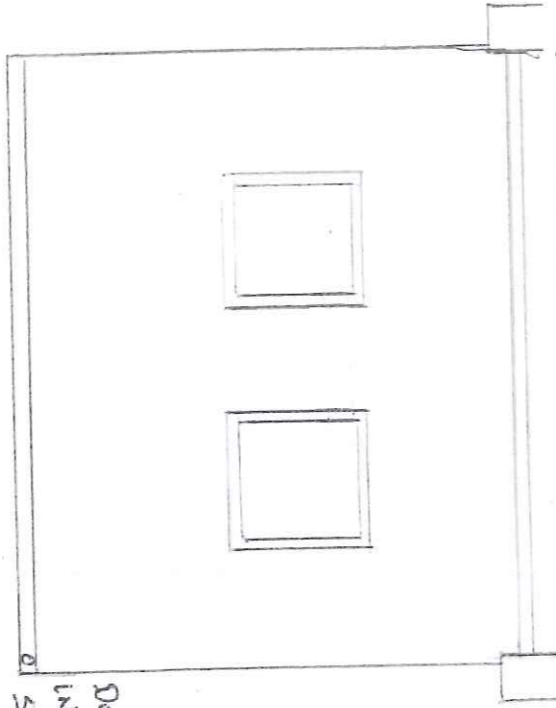
Letter out Casework  
Site.

WINDOW FEATURES

GREY EXT./GREY INT.

AT THESE WALLS SEAL OFF WITH 2 COATS OF LIQUID BITUMEN TO SATISFACTION OR SURETY TO ELIMINATE ANY WATER INTRUSION MAINTAIN THE CASING.

REMOVE EXISTING  
RAV + PLUMB.  
REMOVE EXISTING  
RAVIAZOR.



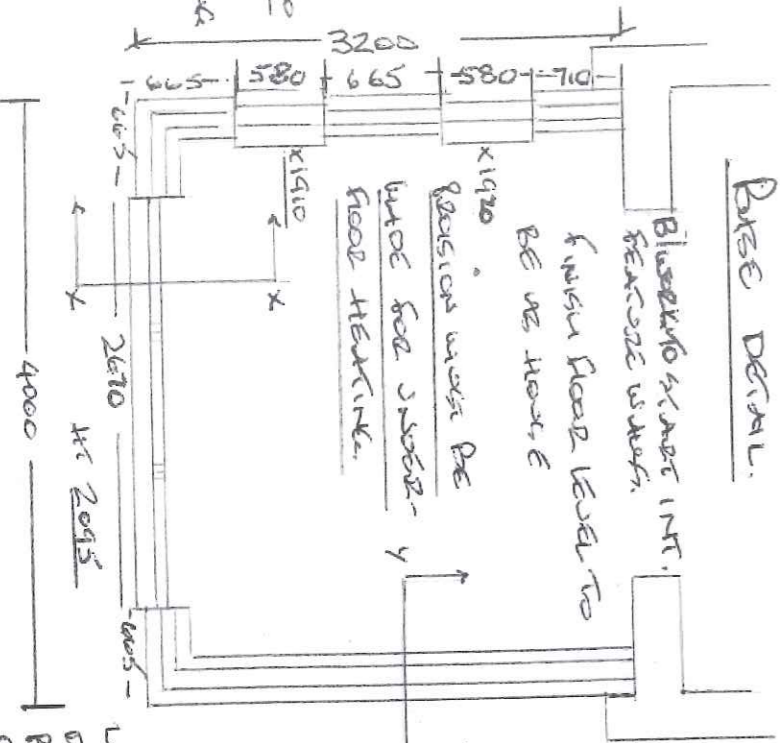
BOARD + SKIM UNDER  
225 PLYWOOD INT. CUTS  
SUFFICIENT TO BE ATTACHED  
ON-SITE

DRAIN AT GUT SIDE  
INTO WATER BUT OR  
SEPARATELY TO BE SORTED  
ON-SITE

FLOOR LEVEL  
SHOW 44

BASE DETAIL.

WINDOW + B.S.F.S.D  
DOOR 5.025 TO BE  
JER. S.F.S.D ON-SITE  
R + S.F.S.D 4.025.



BLASTING START INT.  
REMOVE WALLS.  
FINISH FLOOR LEVEL TO  
BE ON THIS.  
POSITION WALL BE  
INTO FOR UNDER-  
FLOOR HEATING.

LIFT + STEEL PARTS  
AS NECESSARY FOR  
BASE WORKS.

REMOVE WATER CURT + SUGGEST USE

REMOVE FENCE AS NECESSARY

LOAD CARRIERS REMAIN WHEN TO BE  
DELETED, CARRIERS TO BE PULLED  
BACK AND PLACED ON-SITE. DO NOT  
REMOVE WHEN

WINDOW 1900  
CB 90 CURTAINS 0.562  
WINDOWS X 2, 150 BOARD  
EVAL 6.10E.

CON  
FLOOR  
100 W  
CONCRETE  
75mm  
WATER  
150mm  
+ CURT  
PDRIVE