

architraves and some C18 doors, etc.

Listing NGR: TQ2891381348

Selected Sources

Legacy Record - This information may be included in the List Entry Details

National Grid Reference: TQ 28913 81348

Map



© Crown Copyright and database right 2018. All rights reserved. Ordnance Survey Licence number 100024900.
© British Crown and SeaZone Solutions Limited 2018. All rights reserved. Licence number 102006.006.
Use of this data is subject to [Terms and Conditions \(https://historicengland.org.uk/terms/website-terms-conditions/\)](https://historicengland.org.uk/terms/website-terms-conditions/).

The above map is for quick reference purposes only and may not be to scale.
For a copy of the full scale map, please see the attached PDF - [1210035 .pdf](#)
(http://mapservices.HistoricEngland.org.uk/printwebservicehle/StatutoryPrint.svc?194321/HLE_A4L_Grade|HLE_A3L_Grade.pdf)

The PDF will be generated from our live systems and may take a few minutes to download depending on how busy our servers are. We apologise for this delay.

This copy shows the entry on 01-Mar-2018 at 03:27:05.

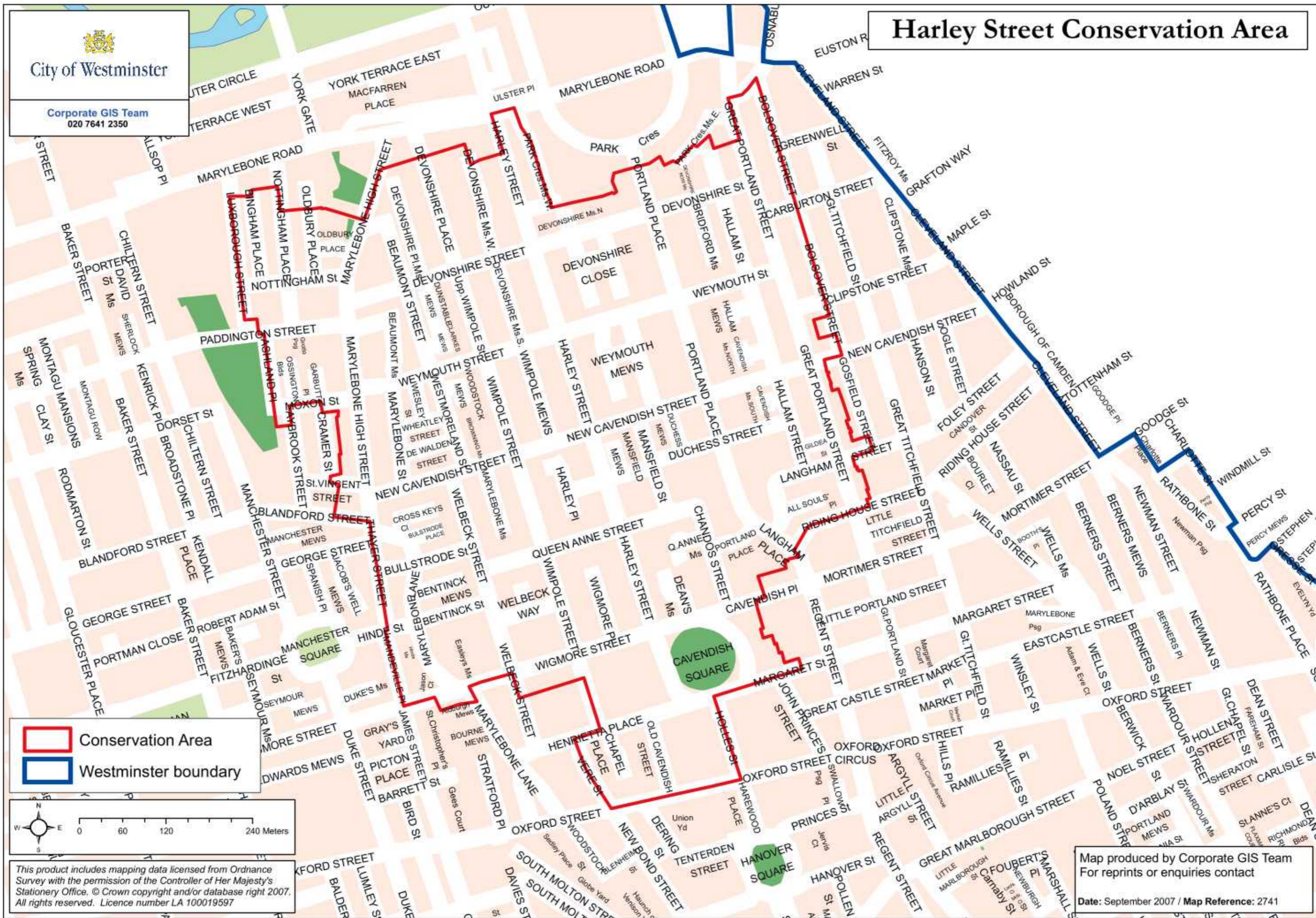
End of official listing

// 1 CAVENDISH SQUARE, MARYLEBONE, LONDON W1G 6LA

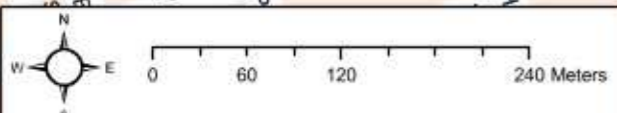


APPENDIX 2: Harley Street Conservation Area

Harley Street Conservation Area



 Conservation Area
 Westminster boundary



This product includes mapping data licensed from Ordnance Survey with the permission of the Controller of Her Majesty's Stationery Office. © Crown copyright and/or database right 2007. All rights reserved. Licence number LA 100019597

Map produced by Corporate GIS Team
For reprints or enquiries contact

Date: September 2007 / Map Reference: 2741

// 1 CAVENDISH SQUARE, MARYLEBONE, LONDON W1G 6LA

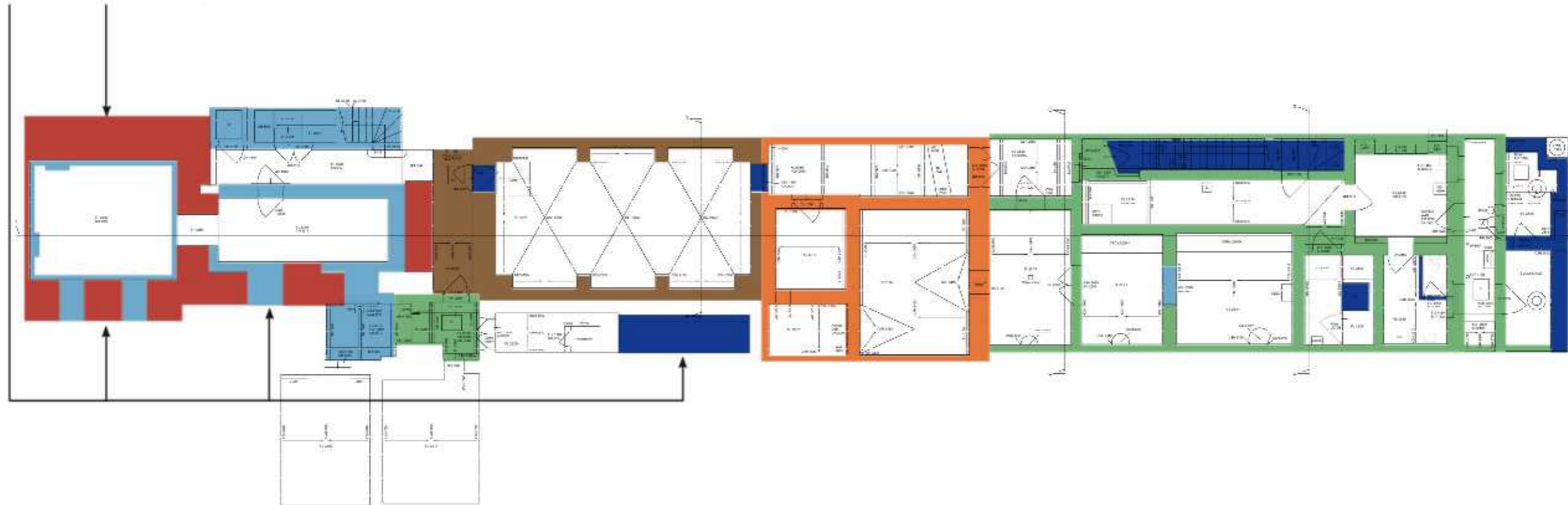


APPENDIX 3: Phasing Plans

Based on survey drawings provided by Osel

- BASEMENT**
- 1720-1724
 - 1760
 - 1826-1827
 - Generally 1827 with some later C20 alterations
 - 1873
 - 1927
 - Late C20 / Unknown

Walls shown indicatively as not included on survey drawings



Location:
1 Cavendish Square, London

Date:
March 2018

Scale:
NOT TO SCALE

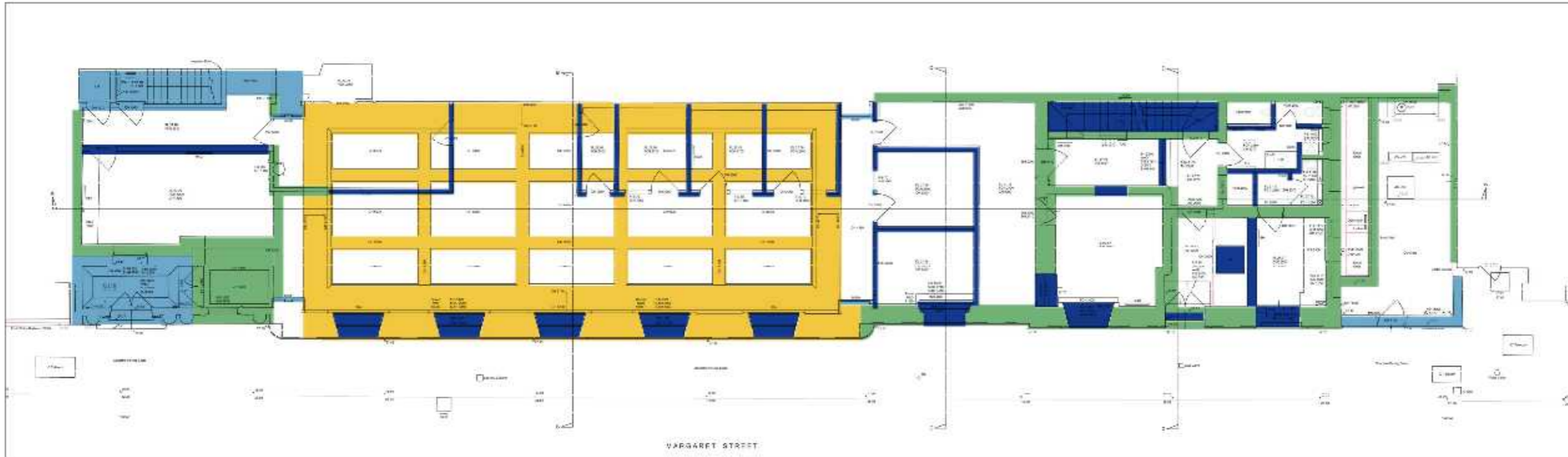
Figure:

▲ North

Based on survey drawings provided by Osel

GROUND FLOOR

- 1720-1724
- 1760
- 1826-1827
- Generally 1827 with some later C20 alterations
- 1873
- 1927
- Late C20 / Unknown



Location:
1 Cavendish Square, London

Date:
March 2018

Scale:
NOT TO SCALE

Figure:

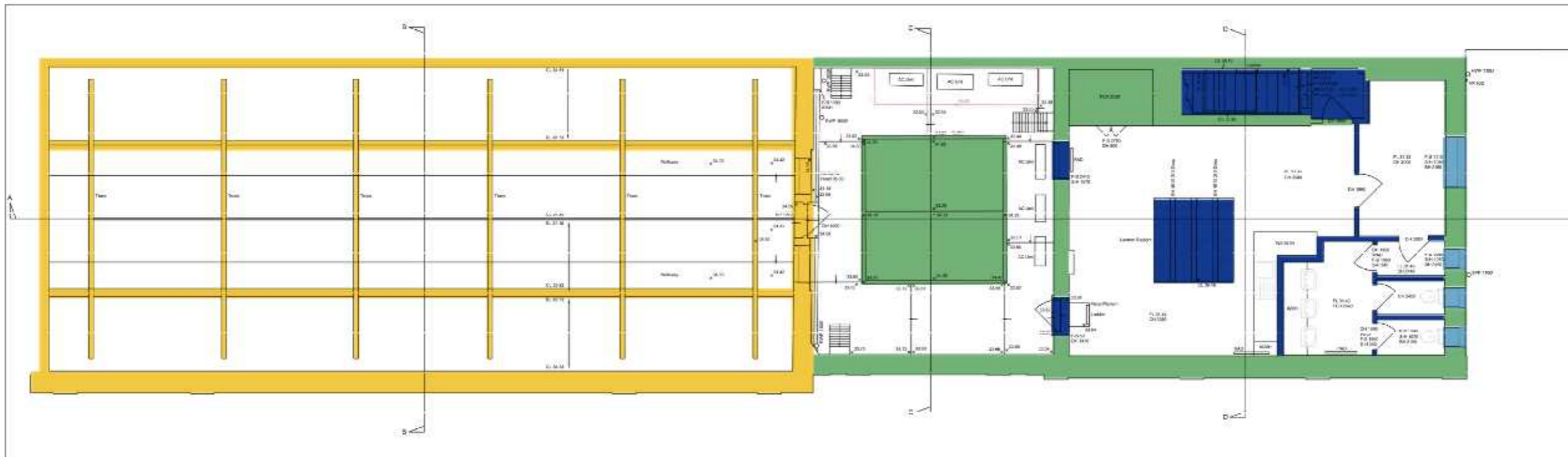
▲ North

**MONTAGU
EVANS**

CHARTERED SURVEYORS
5 BOLTON STREET, LONDON W1J 8BA
T: 020 7493 4002
F: 020 7312 7548
www.montagu-evans.co.uk

Based on survey drawings provided by Osel

- FIRST FLOOR**
- 1720-1724
 - 1760
 - 1826-1827
 - Generally 1827 with some later C20 alterations
 - 1873
 - 1927
 - Late C20 / Unknown



Location:
1 Cavendish Square, London

Date:
March 2018

Scale:
NOT TO SCALE

Figure:

▲ North

Based on survey drawings provided by Osel

ELEVATION

- 1720-1724
- 1760
- 1826-1827
- Generally 1827 with some later C20 alterations
- 1873
- 1927
- Late C20 / Unknown



Location:
1 Cavendish Square, London

Date:
March 2018

Scale:
NOT TO SCALE

Figure:

▲ North

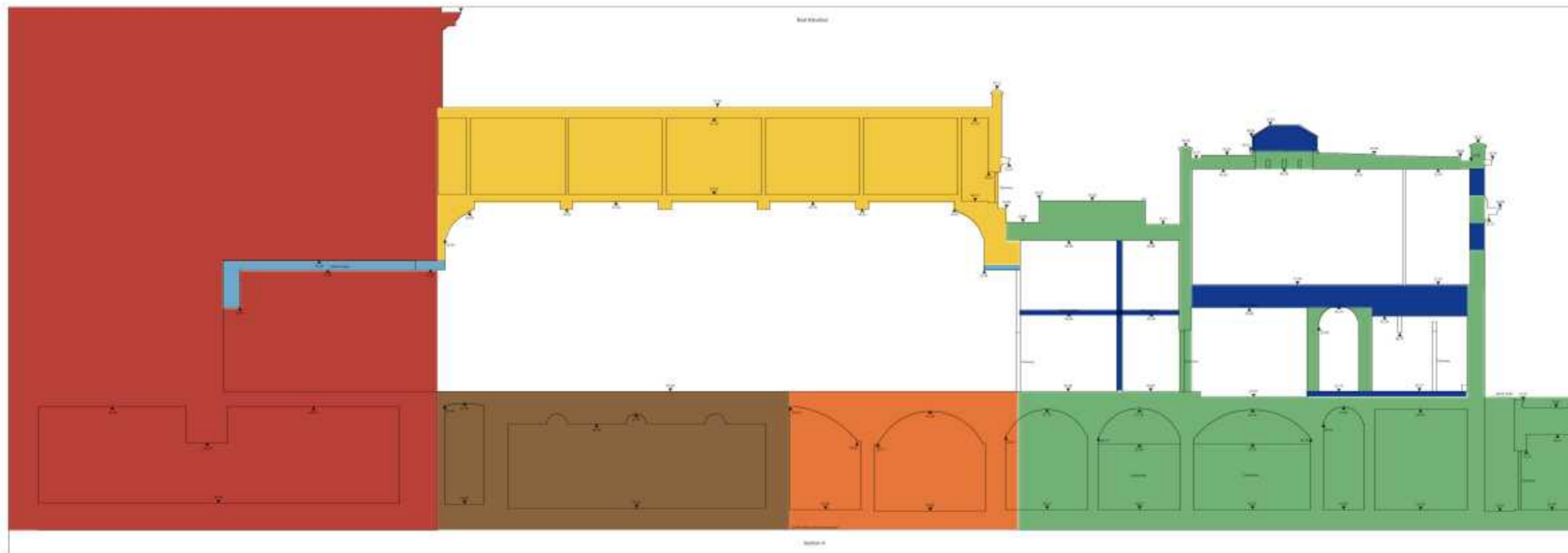
**MONTAGU
EVANS**

CHARTERED SURVEYORS
5 BOLTON STREET, LONDON W1J 8BA
T: 020 7493 4002
F: 020 7312 7548
www.montagu-evans.co.uk

Based on survey drawings provided by Osel

SECTION

- 1720-1724
- 1760
- 1826-1827
- Generally 1827 with some later C20 alterations
- 1873
- 1927
- Late C20 / Unknown



Location:
1 Cavendish Square, London

Date:
March 2018

Scale:
NOT TO SCALE

Figure:

▲ North

**MONTAGU
EVANS**

CHARTERED SURVEYORS
5 BOLTON STREET, LONDON W1J 8BA
T: 020 7493 4002
F: 020 7312 7548
www.montagu-evans.co.uk

