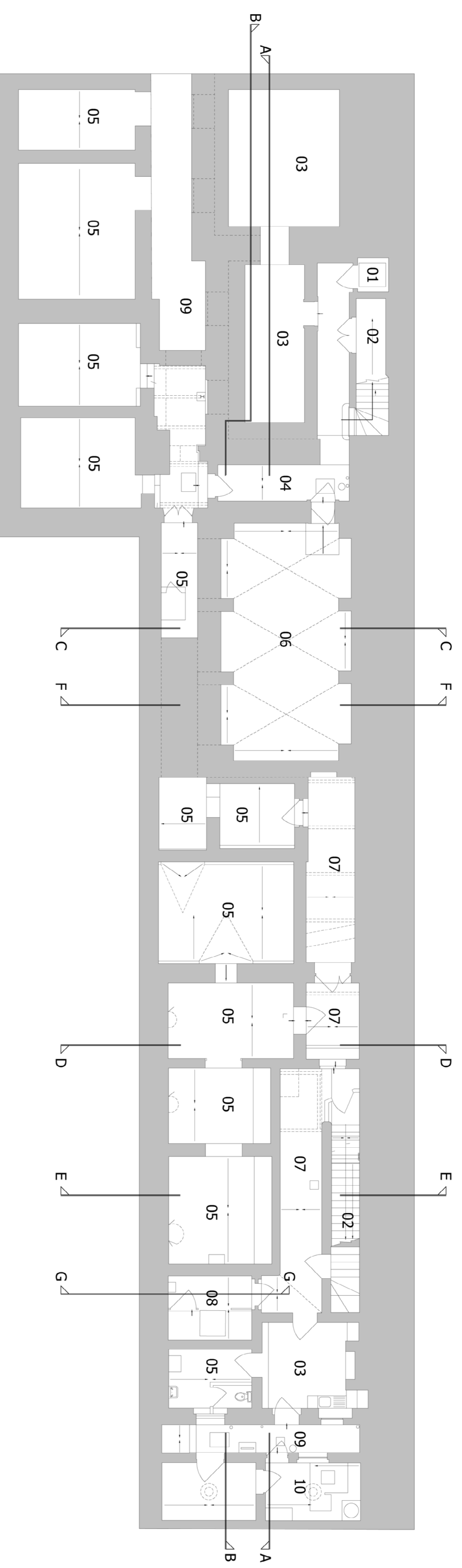


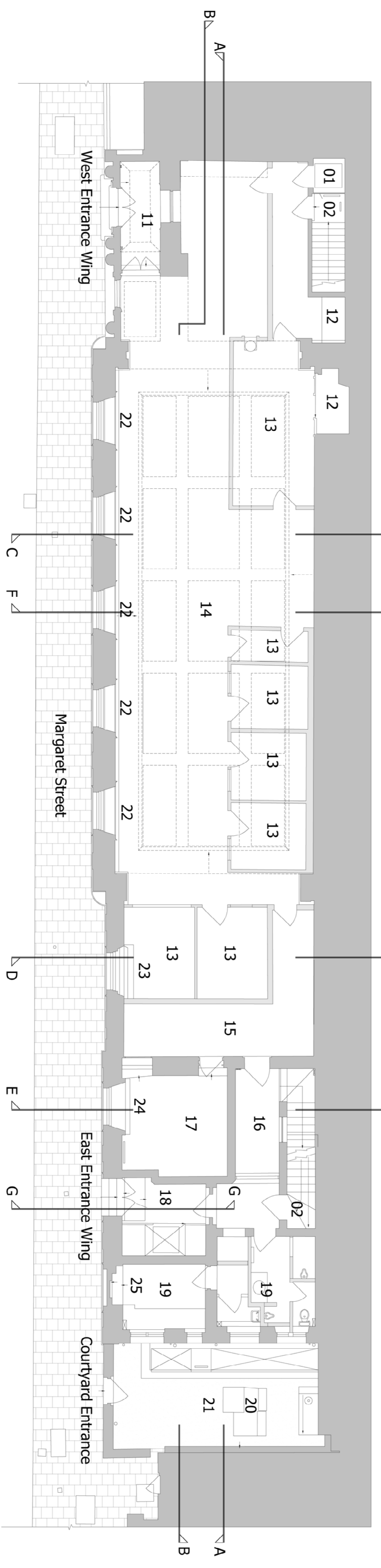
THE OPERATOR MUST VERIFY ALL DIMENSIONS ON SITE BEFORE MAKING
SHP DRAWINGS OR ANY MEASUREMENTS OF ANY KIND

REV.	DATE	REVISION
A	22.02.18	Updated to Survey



Existing Basement 1.200 @ A3

- Key
- 01 Services lift
 - 02 Stairs up/down with cupboard space
 - 03 Cellar with flat ceiling
 - 04 Circulation space
 - 05 Vaulted cellar
 - 06 Double barrel vaulted cellar
 - 07 Vaulted area with services platform
 - 08 Vaulted cellar with void cut out rising to ground floor
 - 09 Lightwell
 - 10 Plant
 - 11 West Entrance Porch (1927)
 - 12 Cupboard Space
 - 13 Bank Offices
 - 14 Main Hall with double height ceiling space
 - 15 Back of house office areas
 - 16 Circulation area with arched door openings
 - 17 Office areas with lowered floor slab
 - 18 Lift area and fire secondary exit
 - 19 WC/ Services
 - 20 Plant/ Extraction Ducts
 - 21 External Courtyard
 - 22 Double height arched window/architrave detail; shutters and wooden boxing below
 - 23 Double height arch window truncated by ceiling; no shutters; no architrave; white painted wooden box radiator below
 - 24 Double height arch window truncated by ceiling; shutters; Different architrave detail and no boxing
 - 25 Blind arch window



Existing Ground Floor 1.200 @ A3

FOR INFORMATION

NB:
Drawings as per ABA measured survey received on
06.12.17

Osel
architects and
development consultants

PROJECT:
1 Cavendish Square
London, W1G 0UA

CLIENT:
development consultants

DRAWING:
Existing
Basement and Ground Floor Plans

DRAWING No.: **E17-011 EXP001** REV: **A**

SCALE: 1:200 @ A3

DRAWN: RC DATE: 22.01.18

CHECKED: WTM DATE: 22.01.18

26 Oldbury Place, London W1U 9PL Tel: (020) 7224 2447 Fax: (020) 7224 2997
Email: admin@osel.co.uk Web: www.oselarchitects.co.uk
© COPYRIGHT EXISTS IN THE DESIGN AND INFORMATION SHOWN ON THIS DRAWING