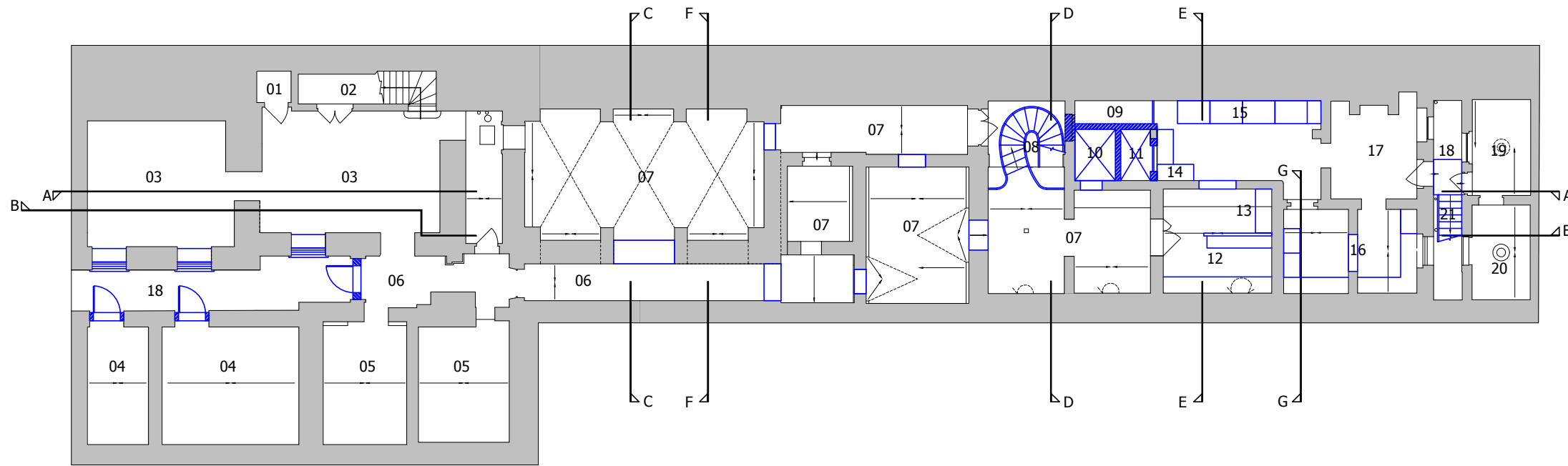


REV.	DATE	REVISION
A	19.07.18	Kitchen Extract removed
B	22.08.18	Amendments to Planning Officer Comments

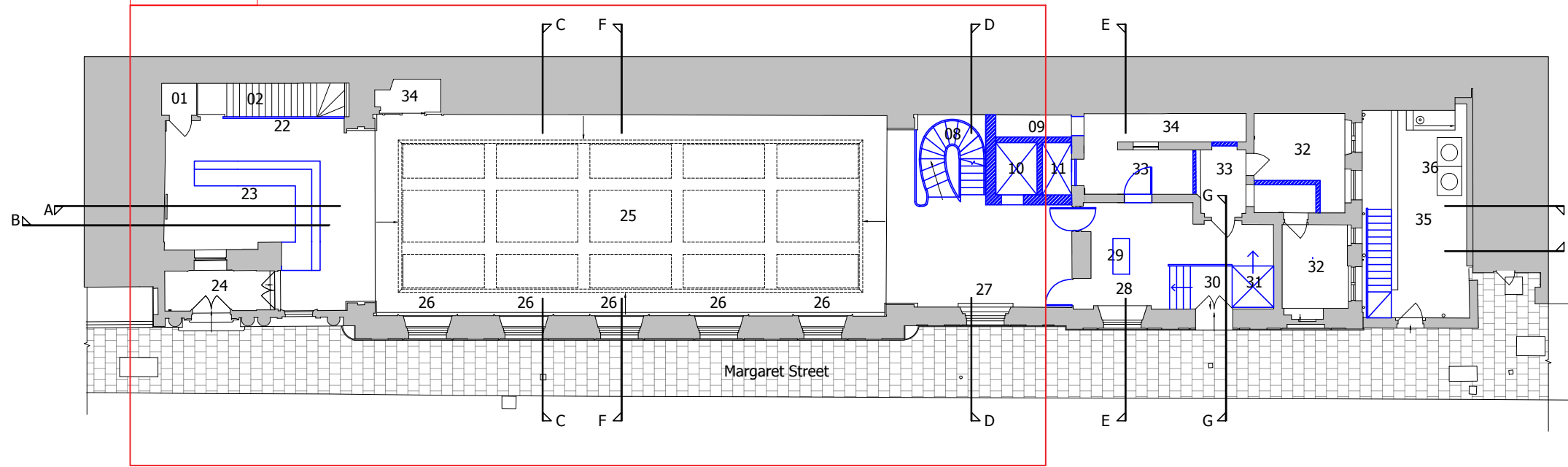


Basement Proposals
 1.200 @ A3

Key

- 01 Redundant lift removed and area used as store
- 02 Stairs and handrail to be retained and restored
- 03 Cellar with flat ceiling to be retained and restored as bar with historic glazed openings in external facade to be restored
- 04 M+E Plant/ Store areas
- 05 New WC within vaulted cellar space
- 06 Circulation Space restored (former lightwell)
- 07 Vaulted area to be retained and restored with new opening to former lightwell
- 08 New feature stair
- 09 Mechanical Services Extract Riser
- 10 Lift
- 11 Dumb waiter
- 12 Kitchen Wash and equipment store area
- 13 Kitchen Dry store/prep areas
- 14 Kitchen Pass
- 15 Kitchen cooking stations
- 16 Kitchen prep stations
- 17 Kitchen stores/ fridges
- 18 Lightwell as existing
- 19 Staff areas
- 20 Staff lockers/ WC
- 21 Deliveries and fire stair
- 22 New glass balustrade to establish feature stair
- 23 New bar area
- 24 West wing porch entrance to be retained and restored
- 25 Restaurant seating area
- 26 Double height arched window with architrave detail, shutters and wooden boxing to be retained and restored
- 27 Double height arched window and architrave detail to be retained and restored. New shutters and boxing added to match those in main hall
- 28 Double height arched window architrave detail and shutters to be retained and restored. New wooden boxing added to match those in main hall
- 29 Vestibule
- 30 New level entrance to street level
- 31 New platform lift to general floor level
- 32 WC
- 33 Lobby areas
- 34 M+E Services
- 35 Deliveries Courtyard
- 36 VRF Units to replace existing AC units

PRP003



Ground Floor Proposals
 1.200 @ A3

FOR APPROVAL

Osel architects and development consultants

PROJECT:
 1 Cavendish Square
 London, W1G 0LA
 CLIENT:

DRAWING:
 Proposed Plans
 Basement and Ground Floor Plans

DRAWING No.: E17-011 PRP001 REV: B

SCALE: 1.200 @ A3
 DRAWN: RC DATE: 15.01.18
 CHECKED: WTM DATE: 15.01.18