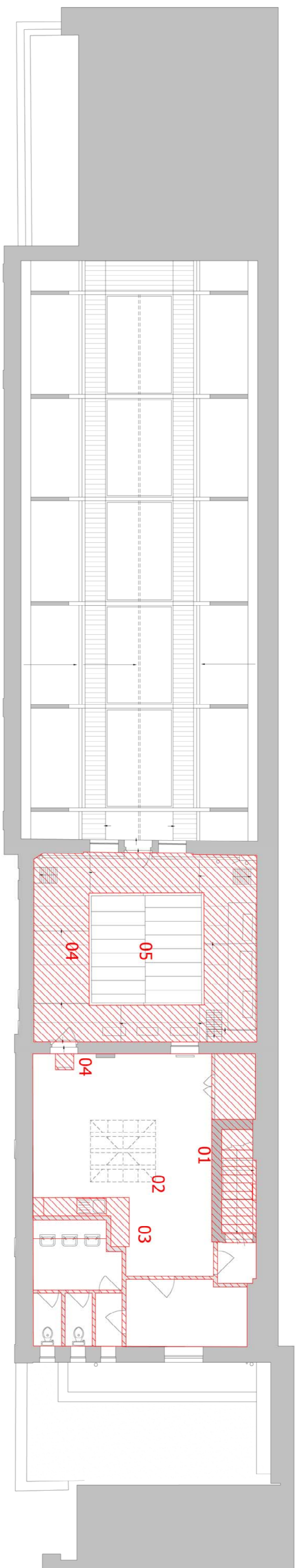
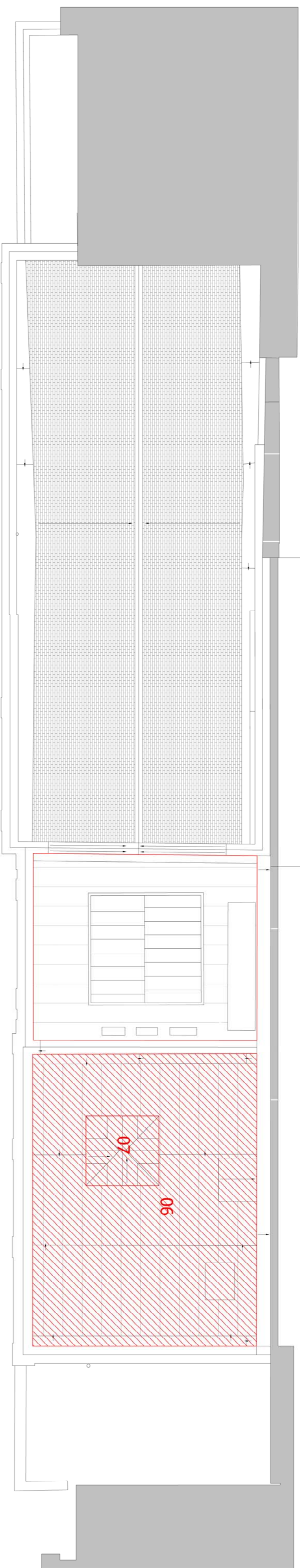


Key

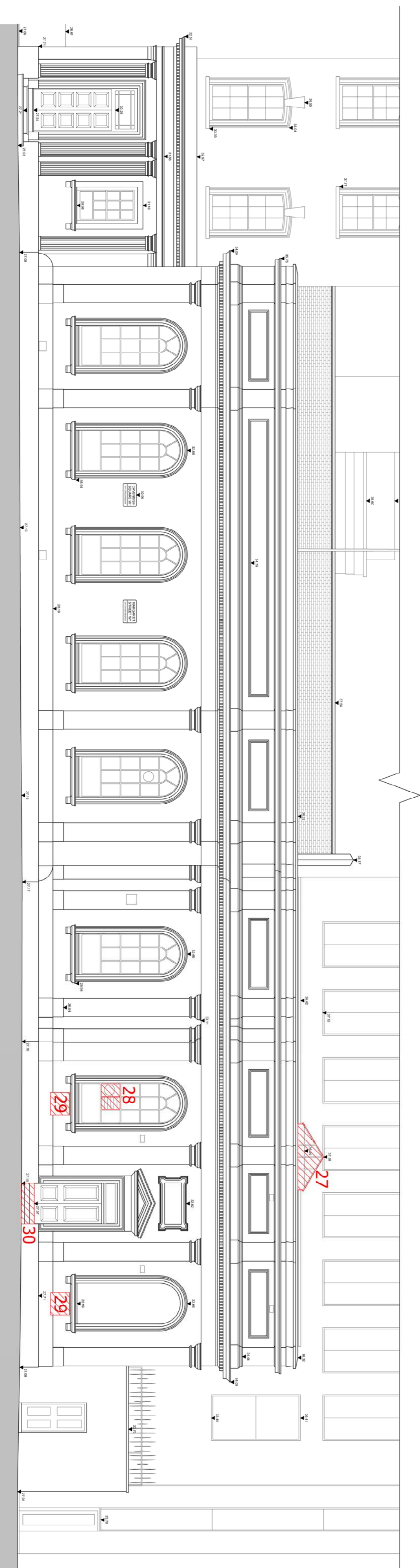
- 01. Remove redundant staff stair and modern partitions. See DEM 1.19
- 02. Remove floor slab. (note not hatched for clarity) See DEM 1.19 and DEM 1.20
- 03. Remove modern partitions, toilets and staff kitchenette. See DEM 1.20
- 04. Remove Services ladder. See DEM 1.20
- 05 Remove roof slab and all redundant services and air con units. See DEM 1.21
- 06. Retain and relocate existing concealed skylight to new roof level. See DEM 1.21
- 07. Remove roof and all services. See DEM 1.22
- 08. Remove skylight. See DEM 1.22
- 09. Remove later added ventilation grilles from window. Refer to PRE 001
- 10. Remove modern cash points. Refer to PRE 001
- 11. Remove steps and lower floor level to allow for level access into building to meet modern building regulations. See DEM 1.16



First Floor Demolitions
 1.200 @ A3



Roof Demolitions
 1.200 @ A3



Front Elevation
 1.200 @ A3

Demolitions should be read in conjunction with 'Photographic and Demolition Schedule' document and DEM003/004/005 drawings which relate specifically to each detailed alteration

FOR APPROVAL



PROJECT: development consultants

CLIENT: 1 Cavendish Square
 London, W1G 0UA

DRAWING: Proposed Demolitions
 First Floor, Roof and Front Elevation

DRAWING No.: E17-011 DEM002
 SCALE: 1.200 @ A3

DRAWN: RC DATE: 15.01.18
 CHECKED: WTM DATE: 15.01.18
 26 Oldbury Place, London W1U 9PE Tel: (020) 7224 2447 Fax: (020) 7224 2997
 Email: info@oselarch.co.uk Web: www.oselarch.co.uk
 © COPYRIGHT EXISTS IN THE DESIGN AND INFORMATION SHOWN ON THIS DRAWING