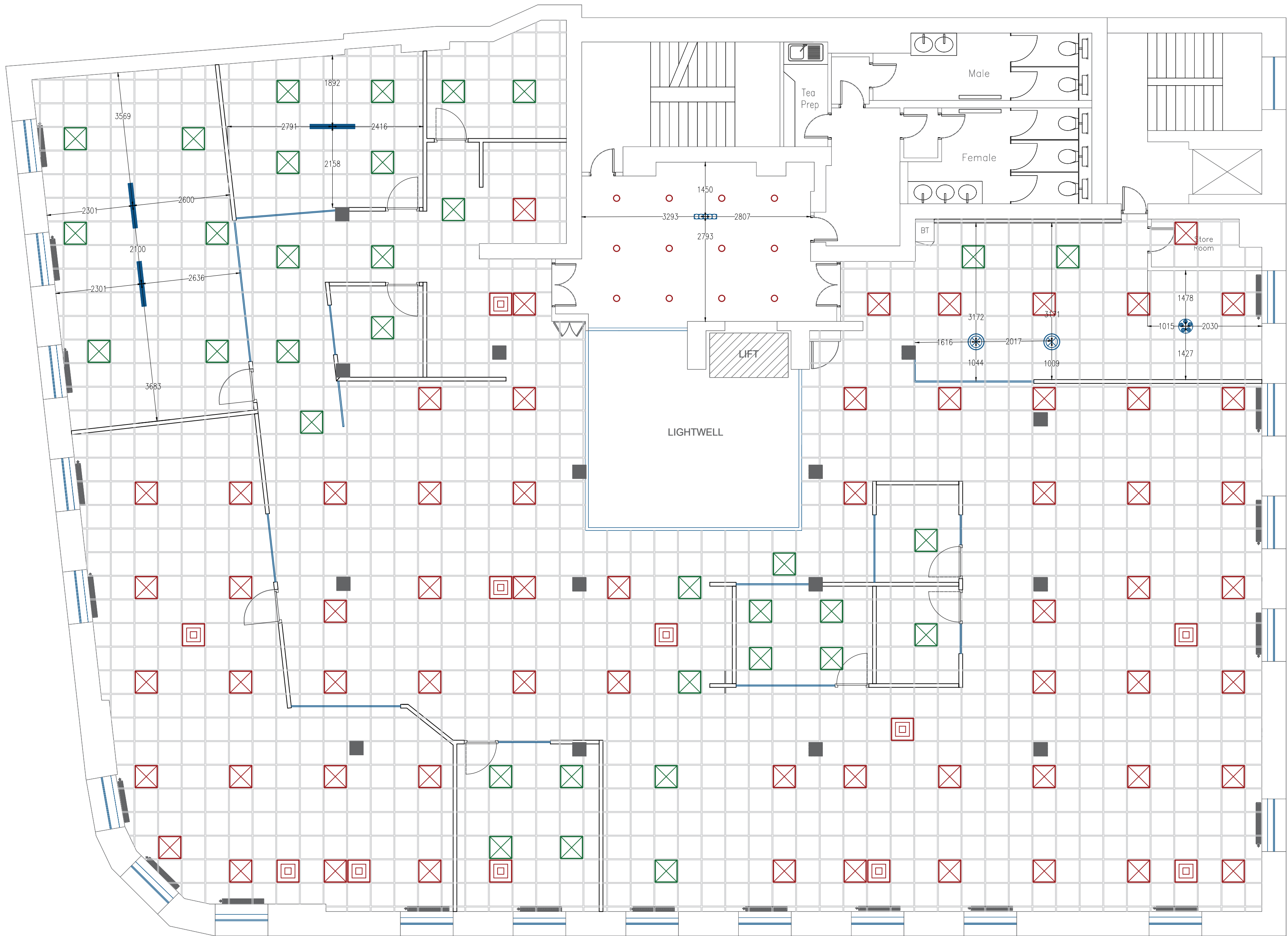



PLAN VIEW


Scale: 1:75 @ A1

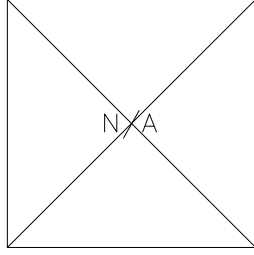



2ND FLOOR

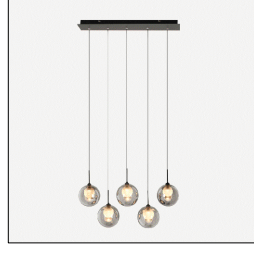
LEGEND:


- 


LT_001
EXISTING 600 MM X 600 MM LED GRID LIGHTS
- 

LT_002
EXISTING 600 MM X 600 MM LED GRID LIGHTS - RELOCATED TO SUIT NEW LAYOUT
- 

LT_003
EXISTING LED RECESSED SPOTLIGHTS IN WHITE FINISH. DIMENSIONS TBC ON SITE - TO REMAIN IN SITU
- 

LT_004
1200 MM X LED LINEAR PENDANT LIGHT IN BLACK FINISH. 4000 K, 3500 LUMENS, 120 DEGREE BEAM ANGLE - APPROX. 1700 MM FFL, DESIGN TBC
- 

LT_005
X6 DIA 130 MM CLEAR BULB PENDANT LIGHTS ON 600 MM X 120 MM CEILING MOUNTED TRACK - APPROX. 1700 MM FFL, DESIGN TBC
- 

LT_006
DIA 430 MM RETRO LARGE ROUND PENDANT LIGHT IN PEWTER FINISH - APPROX. 1750 FFL, DESIGN TBC
- 

LT_007
X6 DIA 100 MM CLEAR BULB PENDANT LIGHTS ON 350 MM X 350 MM CEILING MOUNTED TRACK - APPROX. 1700 MM FFL, DESIGN TBC

PLEASE NOTE:
POSITIONING OF EXISTING CEILING GRID, GRID LIGHTS AND SPOTLIGHTS TBC ON SITE.

EXISTING LIGHTS TO REMAIN IN-SITU - RELOCATED WHERE NEEDED ONLY.

APPROVED

I APPROVE THIS DRAWING SUBJECT TO THOSE AREAS CLEARLY OUTLINED IN RED

NAME:

SIGNED:

DATE:

C1	LAYOUT UPDATE	NP / CO	15.04.21
C1	FIRST ISSUE	NP / CO	05.03.21
REV	DESCRIPTION	CHECKED	DATE



Unit 6, 17 Whitestone Way, Purley Way, Croydon CR0 4WF
E enquiries@mdcgroup.co.uk
T +44 (0)20-7928 9000 F +44 (0)20-7928 9003

NOTE: CONTRACTORS MUST CHECK ALL DIMENSIONS ON SITE PRIOR TO MANUFACTURE OR INSTALLATION.

CLIENT	Davies		
PROJECT	RWF House, Glasgow		
TITLE	RCP - Lighting		
LEVEL	Second Floor	SCALE	1:75@A1
DRAWN	NP	CHKD BY	CO
		DATE	15.04.2021
DWG NO.	MDC.0614.02.100		
	REVISION NO.	C1	

THIS DRAWING REMAINS COPYRIGHT OF METRO DESIGN CONSULTANTS LTD AND MAY NOT BE REPRODUCED IN FULL OR PART THEREOF WITHOUT WRITTEN PERMISSION.