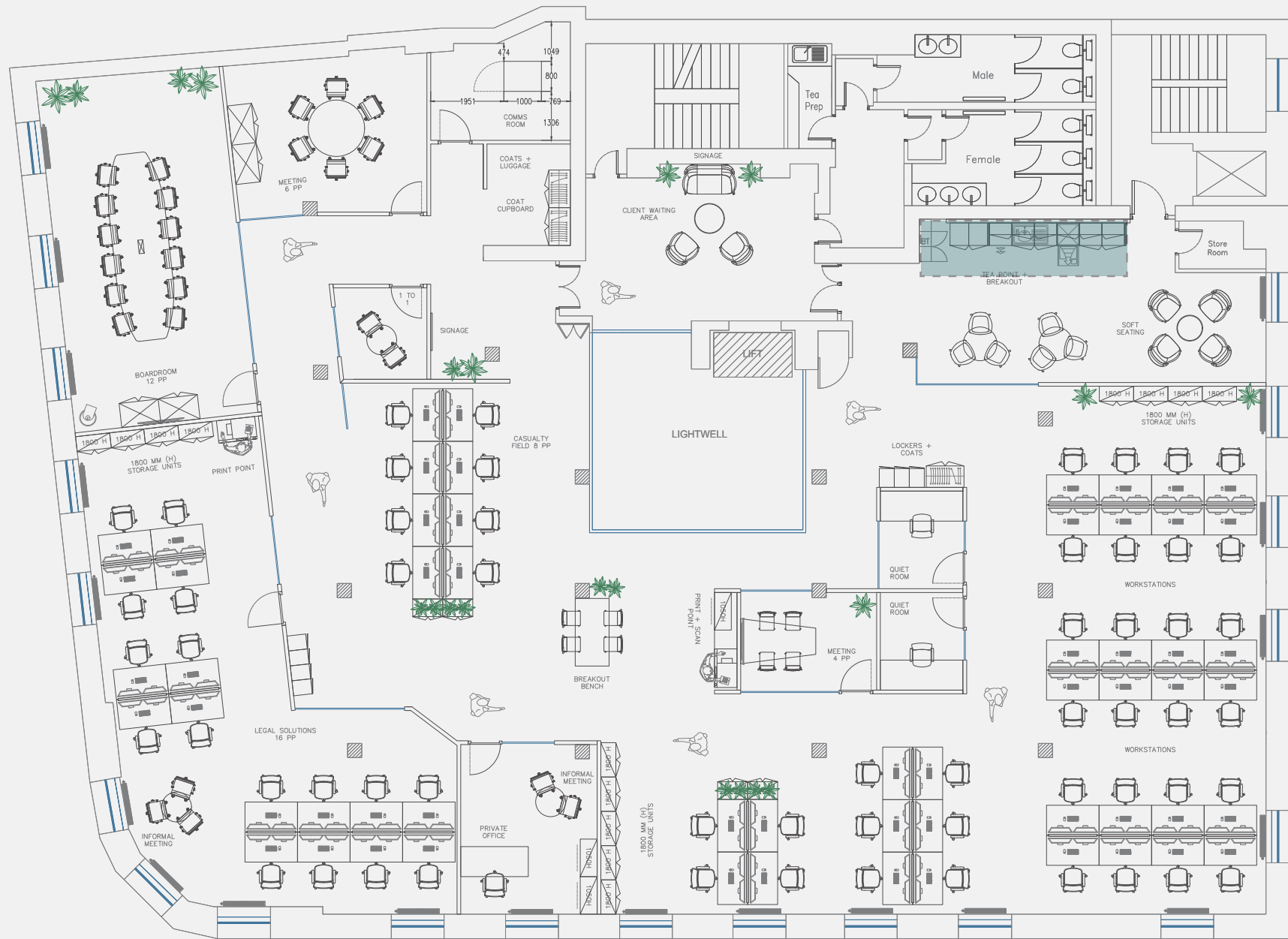


# Tea Point

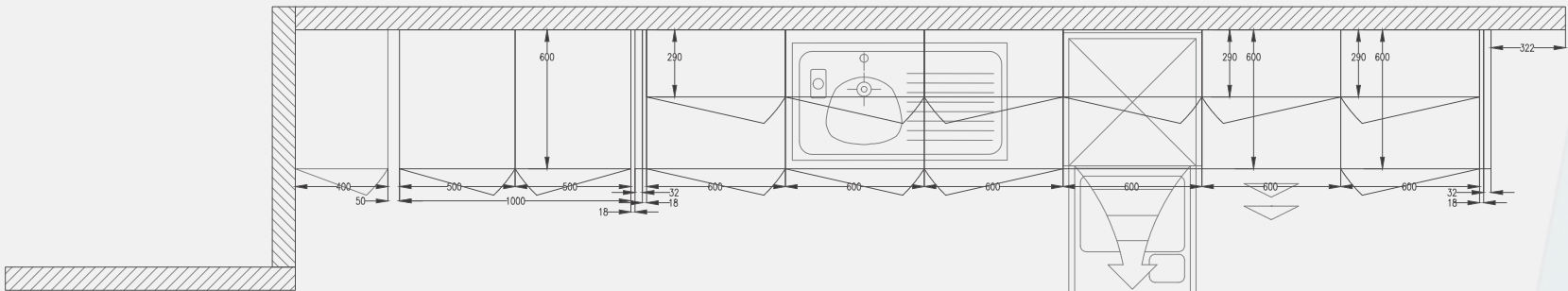
Plan View



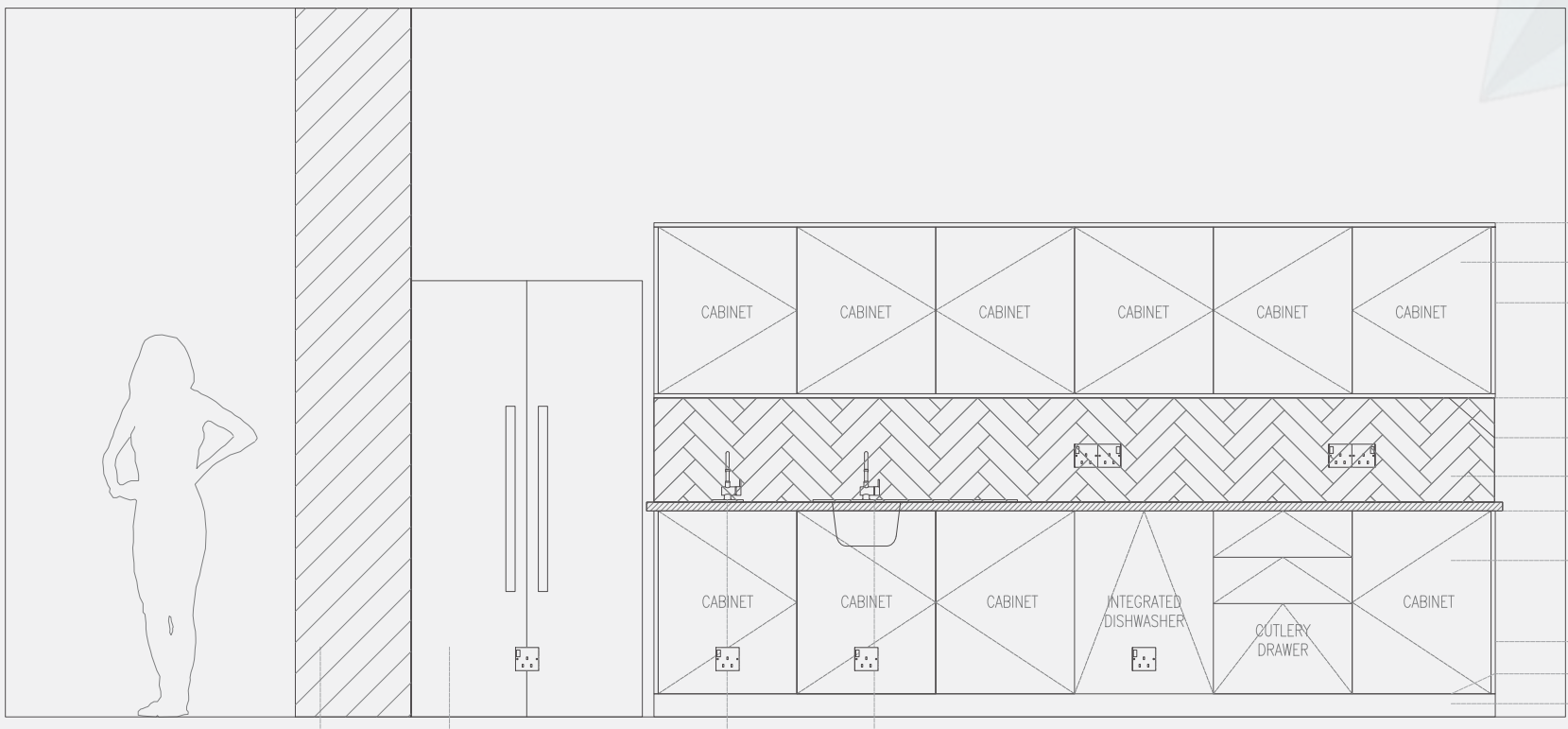
# Tea Point

Proposed Elevation and Finishes

PLAN VIEW  
Scale: 1:15 @ A1



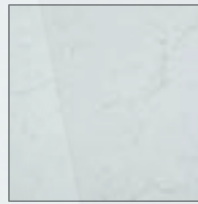
FRONT ELEVATION  
Scale: 1:15 @ A1



FINISHES  
Scale: N/A



**TP\_001**  
HOWDENS CLERKENWELL  
HANDLE-LESS HIGH  
GLOSS SLATE GREY  
UNITS



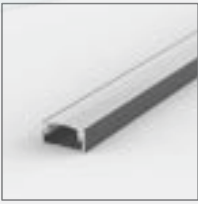
**TP\_002**  
HOWDENS 38 MM  
SQAURE EDGE  
WHITE/GREY MARBLE  
EFFECT LAMINATE  
WORKTOP (WHT1587)



**TP\_003**  
HOWDENS LAMONA  
CALAGGIO MATT  
BLACK MONO MIXER  
TAP (TAP3650)



**TP\_004**  
HOWDENS LAMONA  
SINGLE BOWL INSET  
COMPOSITE BLACK  
KITCHEN SINK  
(SNK2012)



**TP\_005**  
LED STRIP LIGHT  
INSTALLED  
UNDERNEATH WALL  
MOUNTED CABINETS  
AND ABOVE PLINTH,  
ALL TBC



**TP\_006**  
FLAT RECTANGULAR  
MATT WHITE  
SPLASHBACK TILES  
LIED IN HERRINGBONE  
PATTERN,  
ANTHRACITE GROUT

EXISTING BT  
CABINET TBC ON  
SITE

FREE-STANDING TALL AMERICAN  
STYLE FRIDGE IN STAINLESS  
STEEL FINISH

INSTANT HOT AND  
CHILLED WATER TAP

MINIMAL SWAN NECK TAP  
IN MATT BLACK FINISH  
AND SINK IN MATT BLACK  
FINISH

HOWDENS CLERKENWELL HIGH GLOSS SLATE  
GREY 18 MM TOP PANEL  
HOWDENS CLERKENWELL HANDLE-LESS HIGH  
GLOSS SLATE GREY WALL MOUNTED CABINETS  
HOWDENS CLERKENWELL HIGH GLOSS SLATE  
GREY 18 MM END PANEL

HOWDENS CLERKENWELL HIGH GLOSS SLATE  
GREY 18 MM BOTTOM PANEL  
LED STRIP LIGHT UNDERNEATH WALL MOUNTED  
CABINETS  
FLAT RECTANGULAR MATT WHITE SPLASHBACK TILES  
LIED IN HERRINGBONE STYLE, CHARCOAL GROUT

HOWDENS 38MM SQUARE EDGE WHITE/GREY  
MARBLE EFFECT LAMINATE WORKTOP (WHT1367)

HOWDENS CLERKENWELL HANDLE-LESS HIGH  
GLOSS SLATE GREY BASE CABINETS

HOWDENS CLERKENWELL HIGH GLOSS SLATE  
GREY 18 MM END PANEL  
LED STRIP LIGHT ABOVE PLINTH  
HOWDENS CLERKENWELL HIGH GLOSS SLATE  
GREY PLINTH

HOWDENS CLERKENWELL HIGH GLOSS SLATE  
GREY 18 MM END PANEL








LED STRIP LIGHT ABOVE PLINTH

HOWDENS CLERKENWELL HIGH GLOSS SLATE  
GREY PLINTH

# Floor Finishes

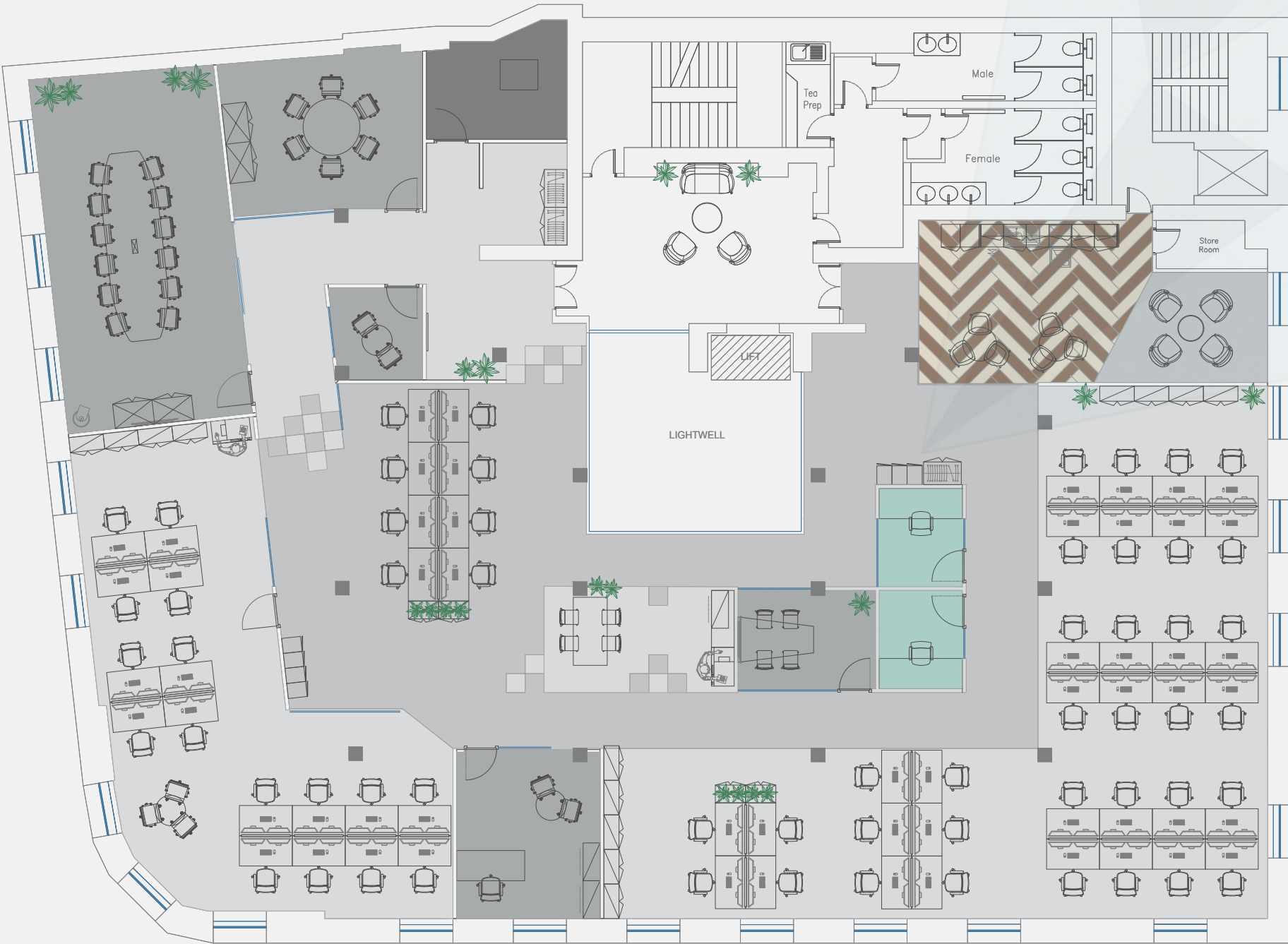
Proposed Layout










LEGEND	
 <b>FL_001</b> Carpet Tile 250 mm x 500 mm 6.5 mm thick 2001 MAGNETIC FLUX 180 sqm (no waste included)	 <b>FL_002</b> Carpet Tile 250 mm x 500 mm 6.5 mm thick 2002 PARADIGM SHIRT 180 sqm (no waste included)
 <b>FL_003</b> Carpet Tile 250 mm x 500 mm 6.5 mm thick 2003 BLACK FLAME 278 sqm (no waste included)	 <b>FL_004</b> Carpet Tile 250 mm x 500 mm 6.5 mm thick 2015 ARCTIC VOYAGE 12 sqm (no waste included)
 <b>FL_005</b> Vinyl Tile 1500 mm x 280 mm 2.5-2.2 mm thick 60300087/60300085 whitened oak 12.8 sqm (no waste included)	 <b>FL_006</b> Vinyl Tile 1500 mm x 280 mm 2.5-2.2 mm thick 60300087/60300085 central oak 12.8 sqm (no waste included)
 <b>FL_007</b> Acoustic Vinyl Tile 500 mm x 500 mm 2.5-2.2 mm thick 63460087/63460085 light blue concrete 11 sqm (no waste included)	

# Floor Finishes

Proposed Layout inc. Furniture

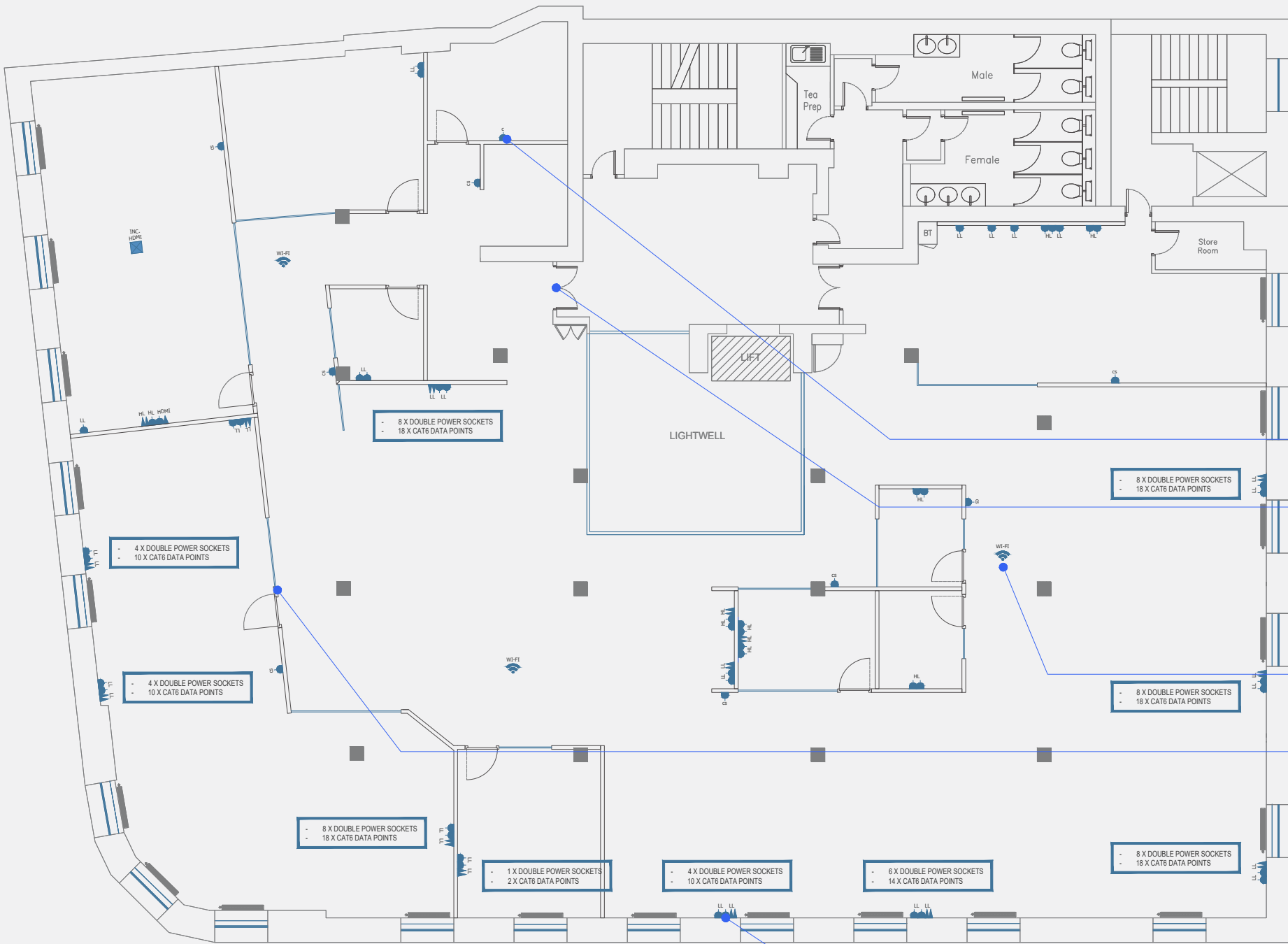


LEGEND	
 <b>FL_001</b> Carpet Tile 250 mm x 500 mm 6.5 mm thick 2001 MAGNETIC FLUX 180 sqm (no waste included)	 <b>FL_002</b> Carpet Tile 250 mm x 500 mm 6.5 mm thick 2002 PARADIGM SHIRT 180 sqm (no waste included)
 <b>FL_003</b> Carpet Tile 250 mm x 500 mm 6.5 mm thick 2003 BLACK FLAME 278 sqm (no waste included)	 <b>FL_004</b> Carpet Tile 250 mm x 500 mm 6.5 mm thick 2015 ARCTIC VOYAGE 12 sqm (no waste included)
 <b>FL_005</b> Vinyl Tile 1500 mm x 280 mm 2.5-2.2 mm thick 60300087/60300085 whitened oak 12.8 sqm (no waste included)	 <b>FL_006</b> Vinyl Tile 1500 mm x 280 mm 2.5-2.2 mm thick 60300087/60300085 central oak 12.8 sqm (no waste included)
 <b>FL_007</b> Acoustic Vinyl Tile 500 mm x 500 mm 2.5-2.2 mm thick 63460087/63460085 light blue concrete 11 sqm (no waste included)	



# Power and Data Layout

Proposed Layout



NEW POWER & DATA LEGEND	
	NEW FLOOR BOX WITH 2 X DOUBLE POWER SOCKETS AND 2 X DOUBLE DATA POINTS AND HDMI CONNECTION
	NEW RCD PROTECTED HIGH LEVEL DOUBLE POWER SOCKET (APPROX. 1600 MM FFL)
	NEW RCD PROTECTED LOW LEVEL DOUBLE POWER SOCKET (APPROX. 450 MM FFL)
	NEW RCD PROTECTED LOW LEVEL SINGLE POWER SOCKET (APPROX. 450 MM FFL)
	NEW RCD PROTECTED LOW LEVEL SINGLE CLEANER SOCKET (APPROX. 450 MM FFL)
	NEW COMMANDO SOCKET FOR COMMS ROOM ONLY (APPROX. 450 MM FFL)
	NEW HIGH LEVEL CAT6 DATA POWER POINT (APPROX. 1600 MM FFL)
	NEW LOW LEVEL CAT6 DATA POWER POINT (APPROX. 450 MM FFL)
	NEW HIGH LEVEL HDMI CONNECTION (APPROX. 1600 MM FFL)
	NEW WI-FI BOX TO THE EXISTING CEILING, LOCATION TBC ON SITE

**PLEASE NOTE:**  
1 X DOUBLE POWER + 2 X CAT6 DATA PER USER  
+ 2 X SPARE CAT6 DATA PER EACH BANK

Commando socket location  
TBC on site

Access control system with 2x controlled door with a top mounted mag lock to door and frame, 1 x desktop reader to load fobs, 1 x memory stick with operating programme loaded and 59 user tokens loaded onto system

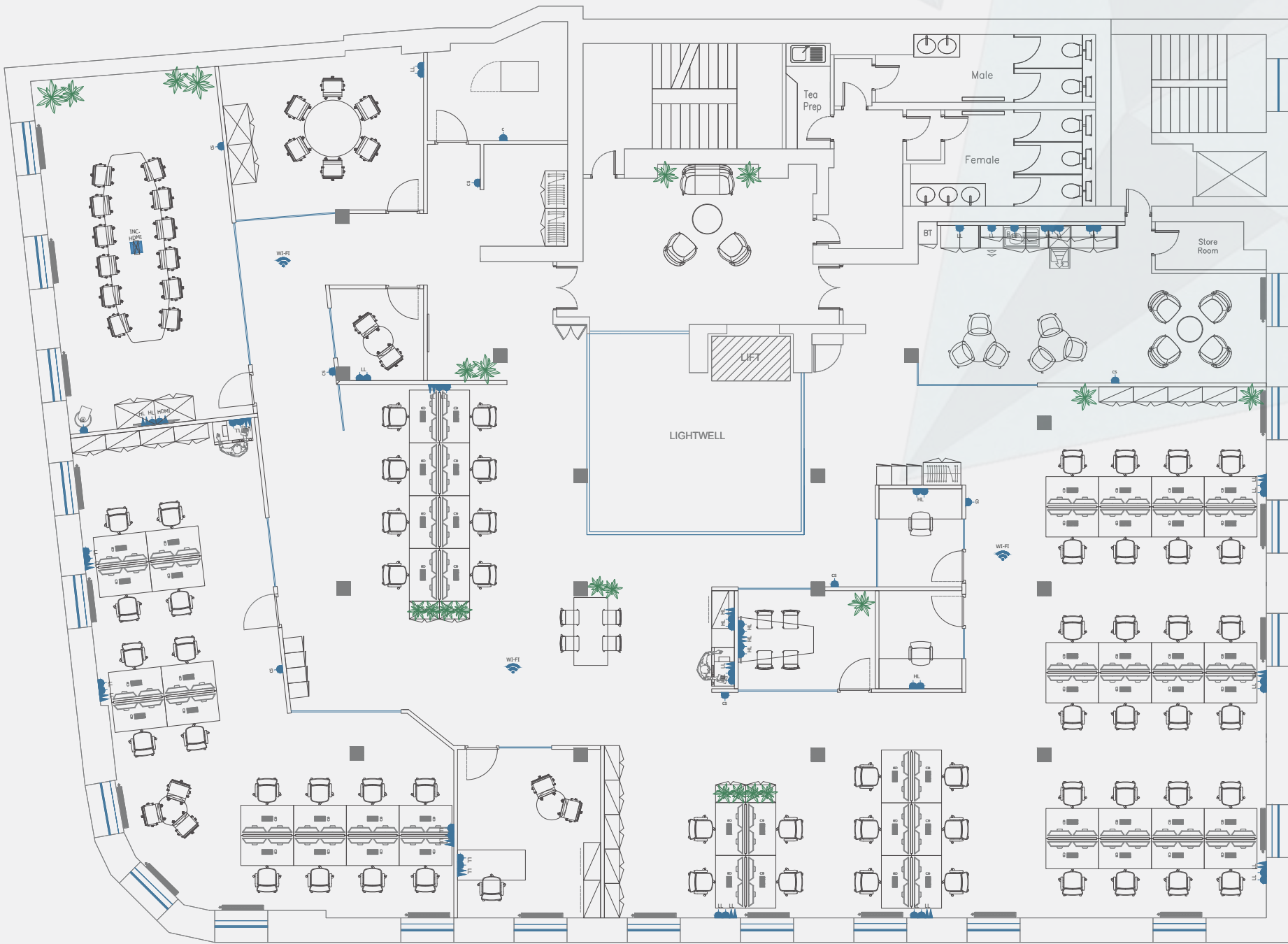
Ceiling mounted Wi-Fi box location TBC on site

Paxton access control to Legal Solutions area

Socket outlets flush mounted on walls adjacent to desk positions

# Power and Data Layout

Proposed Layout inc. Furniture

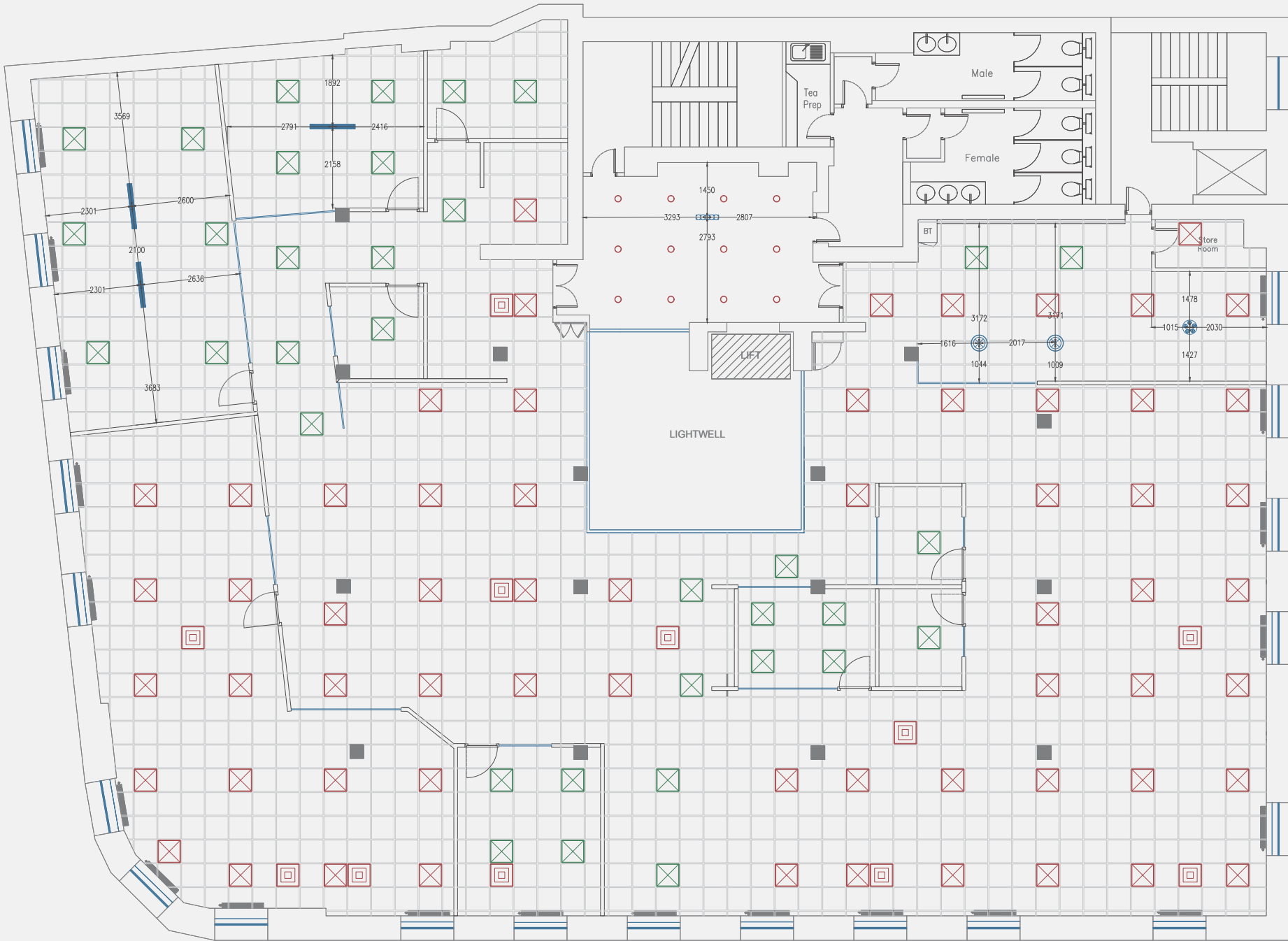


NEW POWER & DATA LEGEND	
	NEW FLOOR BOX WITH 2 X DOUBLE POWER SOCKETS AND 2 X DOUBLE DATA POINTS AND HDMI CONNECTION
	NEW RCD PROTECTED HIGH LEVEL DOUBLE POWER SOCKET (APPROX. 1600 MM FFL)
	NEW RCD PROTECTED LOW LEVEL DOUBLE POWER SOCKET (APPROX. 450 MM FFL)
	NEW RCD PROTECTED LOW LEVEL SINGLE POWER SOCKET (APPROX. 450 MM FFL)
	NEW RCD PROTECTED LOW LEVEL SINGLE CLEANER SOCKET (APPROX. 450 MM FFL)
	NEW COMMANDO SOCKET FOR COMMS ROOM ONLY (APPROX. 450 MM FFL)
	NEW HIGH LEVEL CAT6 DATA POWER POINT (APPROX. 1600 MM FFL)
	NEW LOW LEVEL CAT6 DATA POWER POINT (APPROX. 450 MM FFL)
	NEW HIGH LEVEL HDMI CONNECTION (APPROX. 1600 MM FFL)
	NEW WI-FI BOX TO THE EXISTING CEILING, LOCATION TBC ON SITE

**PLEASE NOTE:**  
1 X DOUBLE POWER + 2 X CAT6 DATA PER USER  
+ 2 X SPARE CAT6 DATA PER EACH BANK

# Lighting Layout

Proposed Layout



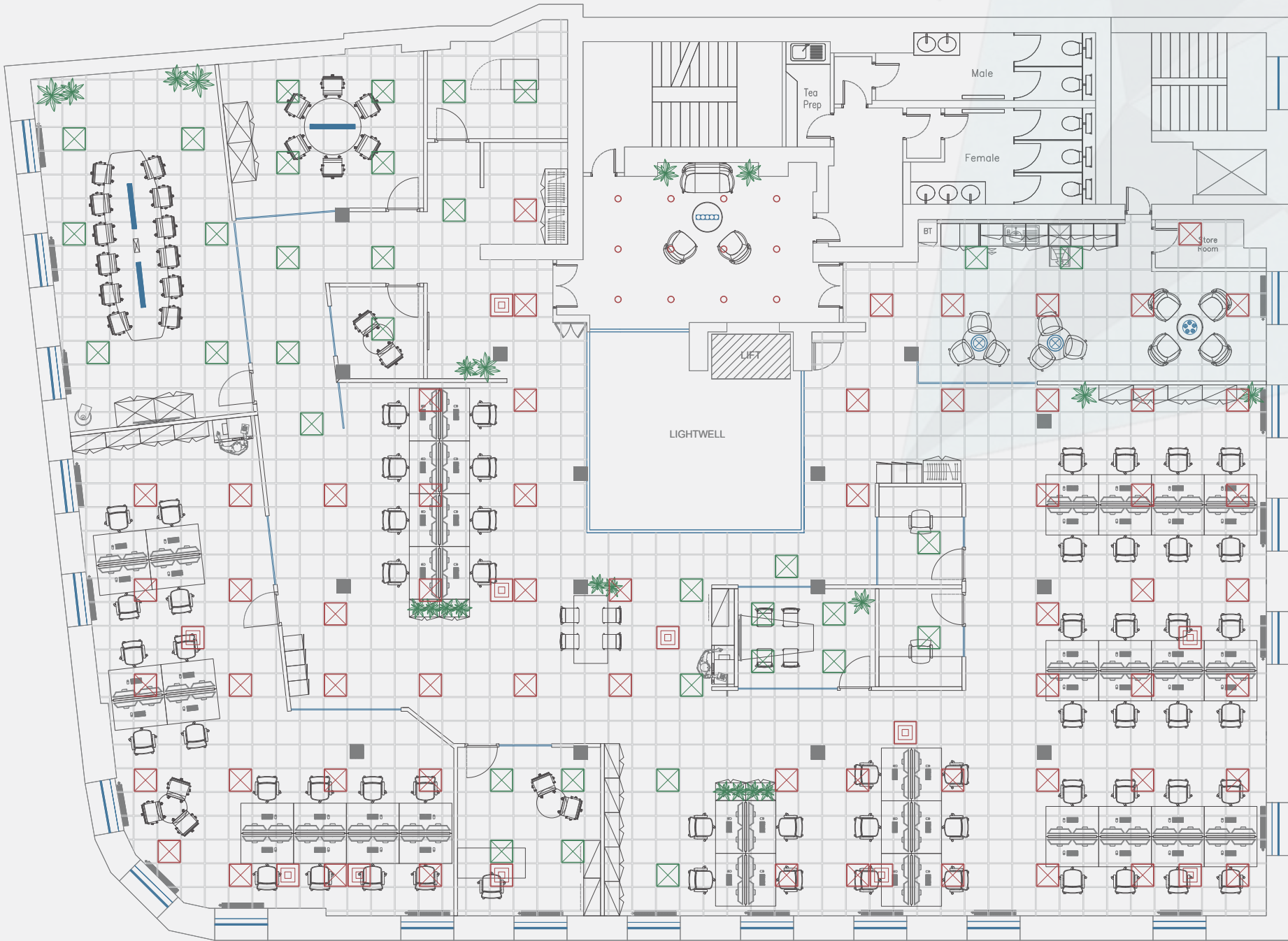
LEGEND:

- LT\_001**  
EXISTING 600 MM X 600 MM LED GRID LIGHTS
- LT\_002**  
EXISTING 600 MM X 600 MM LED GRID LIGHTS - RELOCATED TO BEST NEW LAYOUT
- LT\_003**  
EXISTING LED RECESSED SPOTLIGHTS IN WHITE FINISH, OVERHEADS TBC ON SITE - TO REMAIN IN-SITU
- LT\_004**  
1200 MM X LED LINEAR PENDANT LIGHT IN BLACK FINISH, 4000 K, 300 LUMENS, 120 DEGREE BEAM ANGLE, APPROX. 1700 MM PFL, DESIGN TBC
- LT\_005**  
XS DIA 130 MM CLEAR BULB PENDANT LIGHTS ON 600 MM X 100 MM CEILING, APPROX. 1700 MM PFL, DESIGN TBC
- LT\_006**  
Ø14 800 MM RETRO LARGE ROUND PENDANT LIGHT IN PEWTER FINISH, APPROX. 1700 MM PFL, DESIGN TBC
- LT\_007**  
XS DIA 100 MM CLEAR BULB PENDANT LIGHTS ON 300 MM X 300 MM CEILING, APPROX. 1700 MM PFL, DESIGN TBC

PLEASE NOTE:  
POSITIONING OF EXISTING CEILING GRID, GRID LIGHTS AND SPOTLIGHTS TBC ON SITE.  
EXISTING LIGHTS TO REMAIN IN-SITU - RELOCATED WHERE NEEDED ONLY.

# Lighting Layout

Proposed Layout inc. Furniture



LEGEND:

- LT\_001**  
EXISTING 600 MM X 600 MM LED GRID LIGHTS
- LT\_002**  
EXISTING 600 MM X 600 MM LED GRID LIGHTS - RELOCATED TO BEST NEW LAYOUT
- LT\_003**  
EXISTING LED RECESSED SPOTLIGHTS IN WHITE FINISH, OVERHEADS TBC ON SITE - TO REMAIN IN-SITU
- LT\_004**  
1200 MM X LED LINEAR PENDANT LIGHT IN BLACK FINISH, 4000 K, 300 LUMENS, 120 DEGREE BEAM ANGLE, APPROX. 1700 MM PFL, DESIGN TBC
- LT\_005**  
XS DIA 130 MM CLEAR BULB PENDANT LIGHTS ON 600 MM X 100 MM CEILING, APPROX. 1700 MM PFL, DESIGN TBC
- LT\_006**  
Ø14 800 MM RETRO LARGE ROUND PENDANT LIGHT IN PEWTER FINISH, APPROX. 1700 MM PFL, DESIGN TBC
- LT\_007**  
XS DIA 100 MM CLEAR BULB PENDANT LIGHTS ON 300 MM X 300 MM CEILING, APPROX. 1700 MM PFL, DESIGN TBC

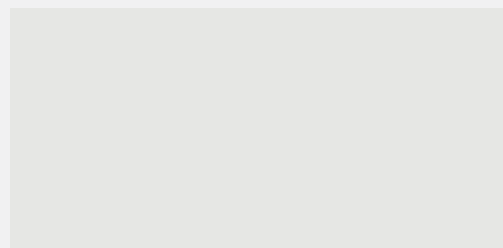
PLEASE NOTE:  
POSITIONING OF EXISTING CEILING GRID, GRID LIGHTS AND SPOTLIGHTS TBC ON SITE.  
EXISTING LIGHTS TO REMAIN IN-SITU - RELOCATED WHERE NEEDED ONLY.



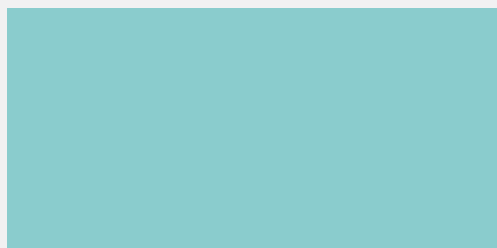
# Finishes

Proposed Finishes Schedule

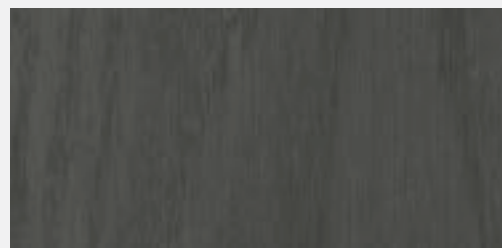
001



002



003



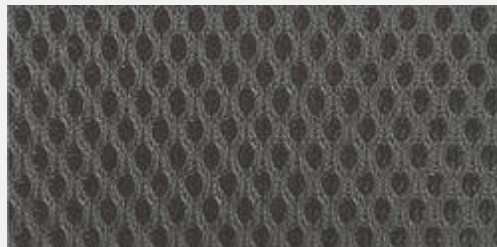
004



005



006



007



008



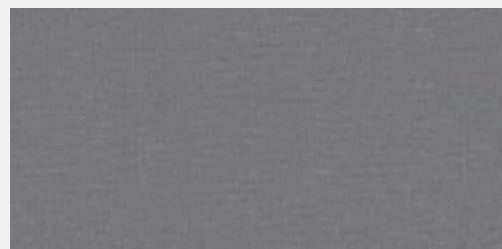
009



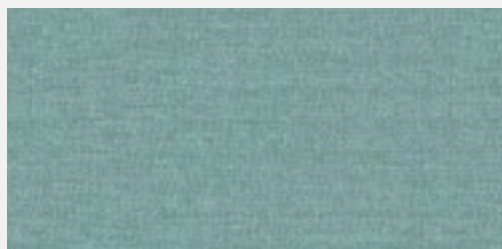
010



011



012



013



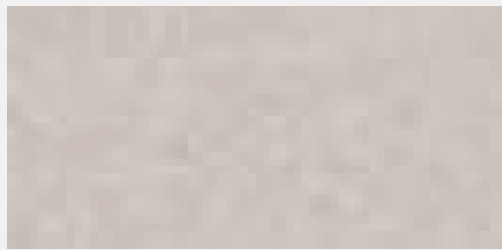
014



015



016



# Finishes

Proposed Finishes Schedule

001

lobby area  
white signage

002

lobby area  
teal wall (RAL TBC)

003

lobby area  
black oak detailing

004

boardroom + meeting rooms  
oak table edges + credenzas

005

meeting chairs  
black faux leather upholstery

006

task chairs - back  
black mesh back

007

task chairs - seat  
grey seat fabric

008

open plan + Legal Solutions  
anthracite desk frames

009

lockers  
salmon doors

010

lockers  
grey doors

011

stools - fabric  
dark grey fabric

012

stools - fabric  
teal fabric

013

stools - fabric  
salmon fabric

014

floor lamp  
black + brass

015

acoustic panels fabric  
light blue fabric

016

acoustic panels fabric  
light beige fabric

# Methodology for how we partner with your team throughout the design process.

## Early Consultation.

Our initial meetings centered around defining the project brief to grasp and a clear understanding of your business. We ensure that we know how people work within your organisation, interact with one another, how much space they require and the future needs of your organisation as it grows. In effect this will allow us to design your workplace specifically suited to meet your needs.

This in-depth background research is then coupled with a building analysis. We investigate the building infrastructure and services so that we can offer you expert advice on how our design will be fully coordinated with the existing building services infrastructure.

## Space Planning.

The concept of dividing the office space in different areas is what set our designs apart.

The creative use of glass divisions, or furniture, all are used in such a manner that creates a better circulation, better work flow, and a better sense of community.

## Design.

Our designer will then take a brief from your project leader and impart this information to our highly skilled design team. Once we have gathered this information and have analysed an assessment of 'consultation and building evaluation' the design process can truly commence.

Design schemes are presented using top of the range computer-generated visualisations and we provide design options for key areas of the fit-out. Once we know that you are completely happy with the visuals provided, we can then proceed with our work.

Our design team strive to be innovative when developing a scheme in order to create a unique working environment specifically for your business. However, we also take a practical approach when considering design implications on the cost of the fit-out, the characteristics of the building and the environmental impact of the project.

## Mood Boards & Finishes.

Mood boards are an easy way for us to communicate to one another what can often seem incommunicable. They provide us with an accurate gauge of the type of environment, workplace aspirations and all aspects of your vision. This includes soft furnishings, textures, colour palette and materials. Therefore, we provide you with coordinated visual examples of the products you have specified.

## Design Detail.

Construction details are an equally important part of the design process. Examples of build details, sketches and construction drawings, such as those featured, are designed as an aid for visualising construction. These details will help you further understand some key details including: Tea point, high level services, low level power, elevation details, reception, joinery and coordinated services plans to enable you to make effective decisions in relation to your space.

## Visuals.

Our creative ideas are then brought to life as they are transformed into 3 Dimensional computer models. The finished interior has a 'life like' affect to give you a more accurate idea of how your space will look, even before any physical construction has begun to take place. The completed example demonstrates the sheer accuracy of the concept 3D visual.

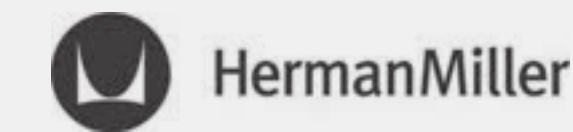
Our design team then continue building the visual image of your space by brainstorming ideas using sketches and notations. This then allows us to generate and develop creative practical solutions based on your specifications, whilst leaving space for any changes you might want to make. These general ideas are then turned into specific features relative to your space.

## Furniture.

We believe that furniture adds character and a unique touch to any space. Therefore having a wide range of furniture manufactures for you to choose from is essential. As a well-established office interior design business that has been successfully running in this sector for over 20 years, we have established fantastic relationships with furniture manufacturers across the world.

As a result, we can provide you with a broad spectrum of furniture products to choose from; from some of the world's best manufacturers, at the best possible prices.

## Meet some of our clients.







MDC Group  
Unit 6  
17 Whitestone Way  
Purley Way  
Croydon  
CR0 4WF

T +44 (0)20 7928 9000

[www.mdcgroup.co.uk](http://www.mdcgroup.co.uk)