

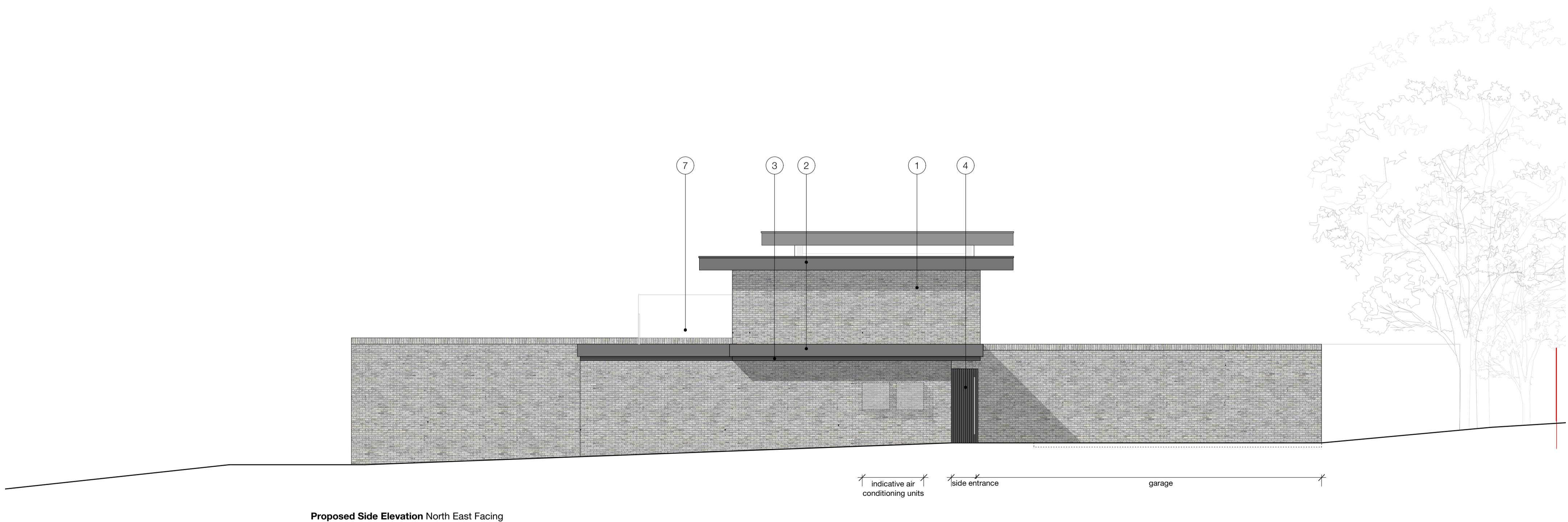
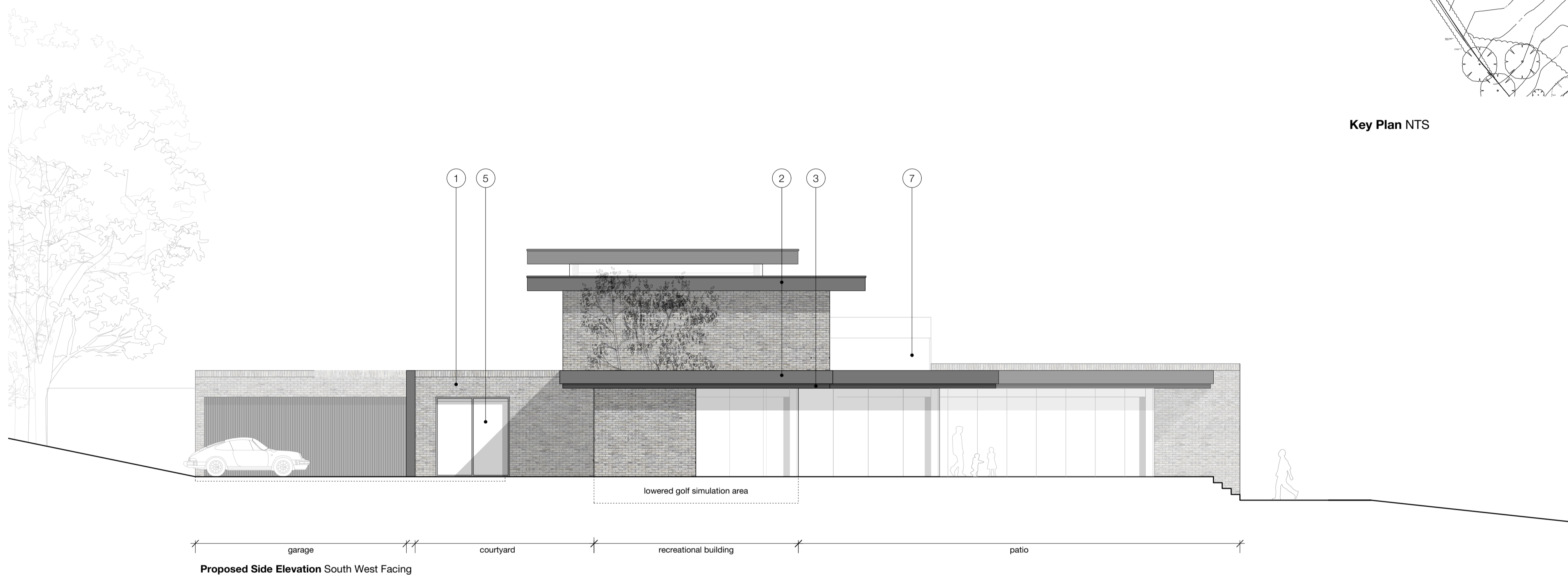
Key Plan NTS

- General Notes:
- PLEASE DO NOT SCALE FROM DRAWINGS.
  - Figured dimensions are in millimeters, levels in metres and are to be checked on site prior to all contractors commencing their works.
  - Areas are in metres. Any areas indicated are approximate and indicative only.
  - Any discrepancies to be reported to the Architect in writing prior to any works being carried out.
  - Drawing only to be used for the purpose specified.

Specific Notes

NOTE: Landscape indicative only, please refer to accompanying proposals prepared by Studio31

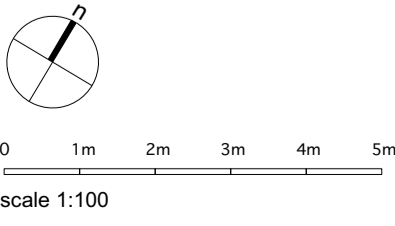
- Material Key
- Facing brickwork (grey multi)
  - Zinc banding (dark grey)
  - Dark timber cladding / soffit detail
  - Dark timber door/gate to match cladding
  - Aluminium slimline window/door system (colour to match Zinc colour)
  - Glazed balustrade
  - 1800mm high opaque screen



Revision	Date	By	Chkd
- Issued for Planning	15/7/21		

**TYE ARCHITECTS**  
 poplar house limbersey lane maulden bedfordshire mk45 2ea  
 t: +44(0)1525 406677 e: info@tyearchitects.com  
 w: www.tyearchitects.com

Project: Holmside, Barnet Road, EN5 3JZ  
 Title: **Proposed Side Elevations**  
 Purpose: PLANNING Dwg No: 2050\_304  
 Scale: 1:100 @ A1 Revision: -



© Confidential copyright Tye Architects under license & universal copyright convention. Information contained within this drawing is the sole copyright of Tye Architects and is not to be reproduced without their express permission. This document must not be copied without written permission and the contents must not be applied to a third party nor be used for any unauthorised purpose.