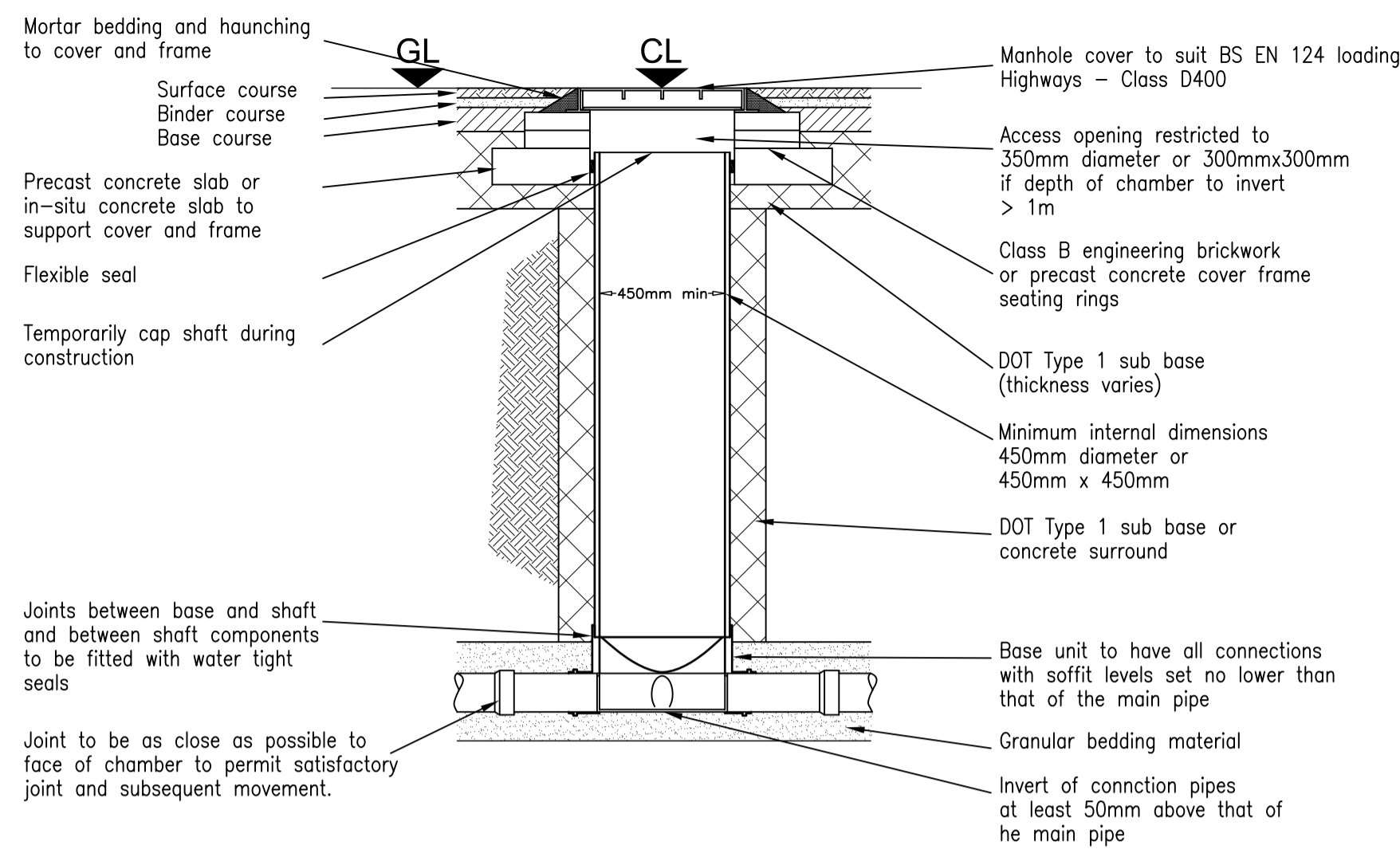
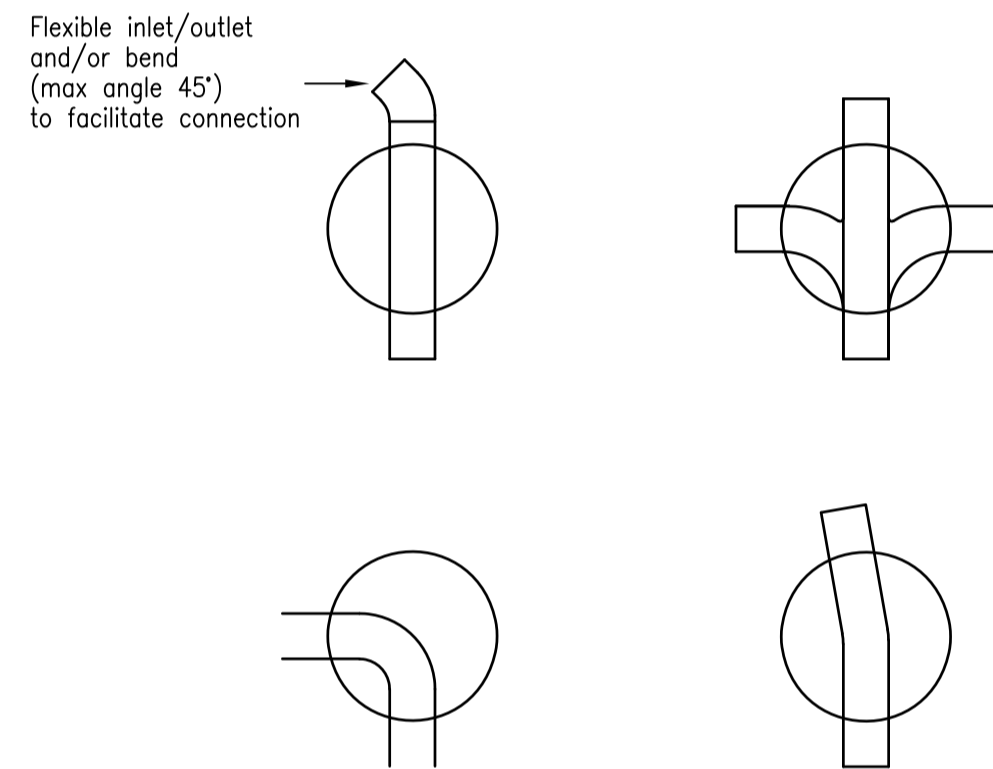


Note: Opening to be located centrally over 900mm shafts and offset approx. 200mm for 1200mm diameter shaft with ladder

**Type 1A - Depth 3.0m - 6.0m Cover-Soffit**  
(N.T.S.)



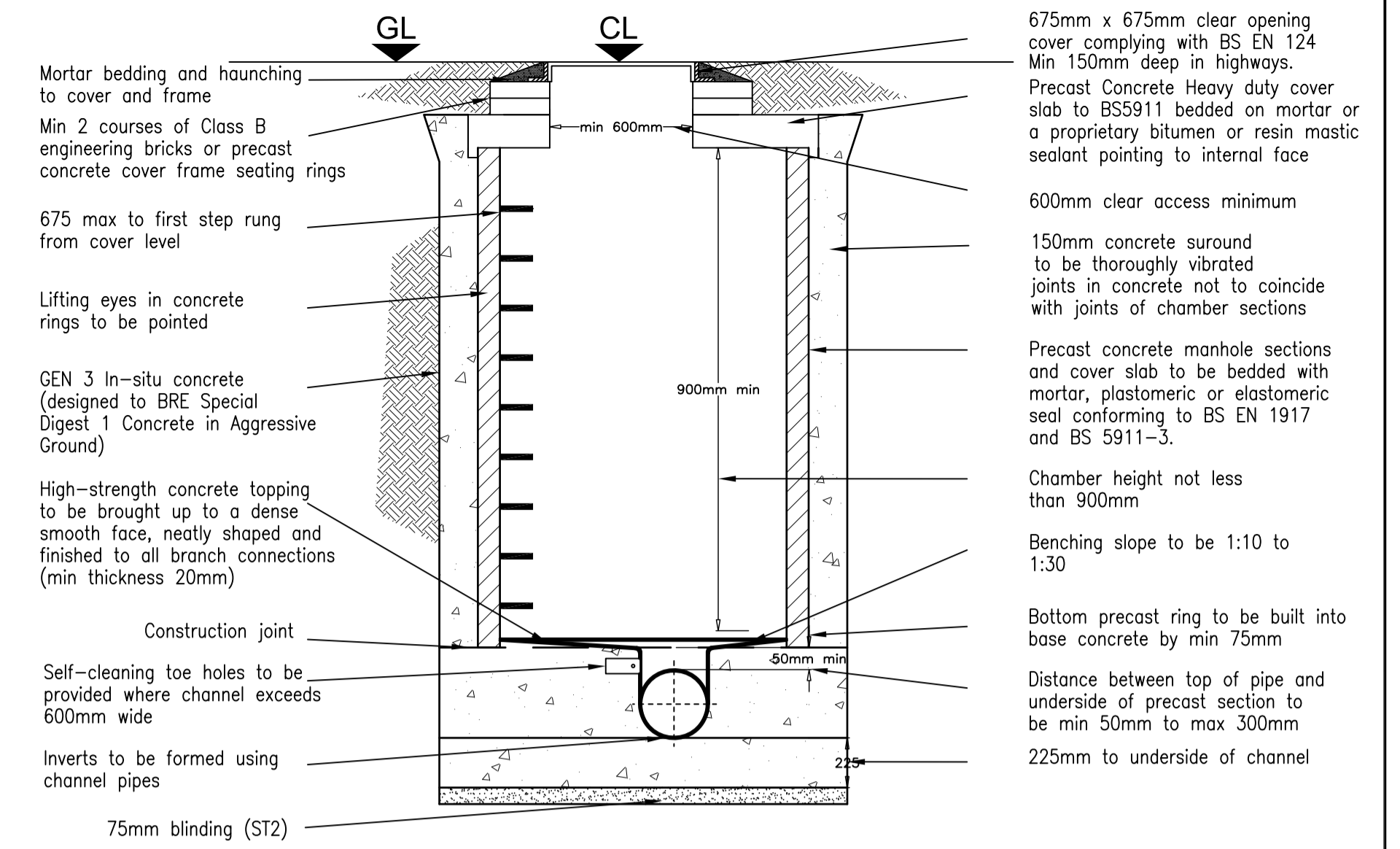
**Type 3 - Max Depth 3.0m Cover-Soffit**  
(Flexible Material - Vehicle Loading - Non entry - N.T.S.)



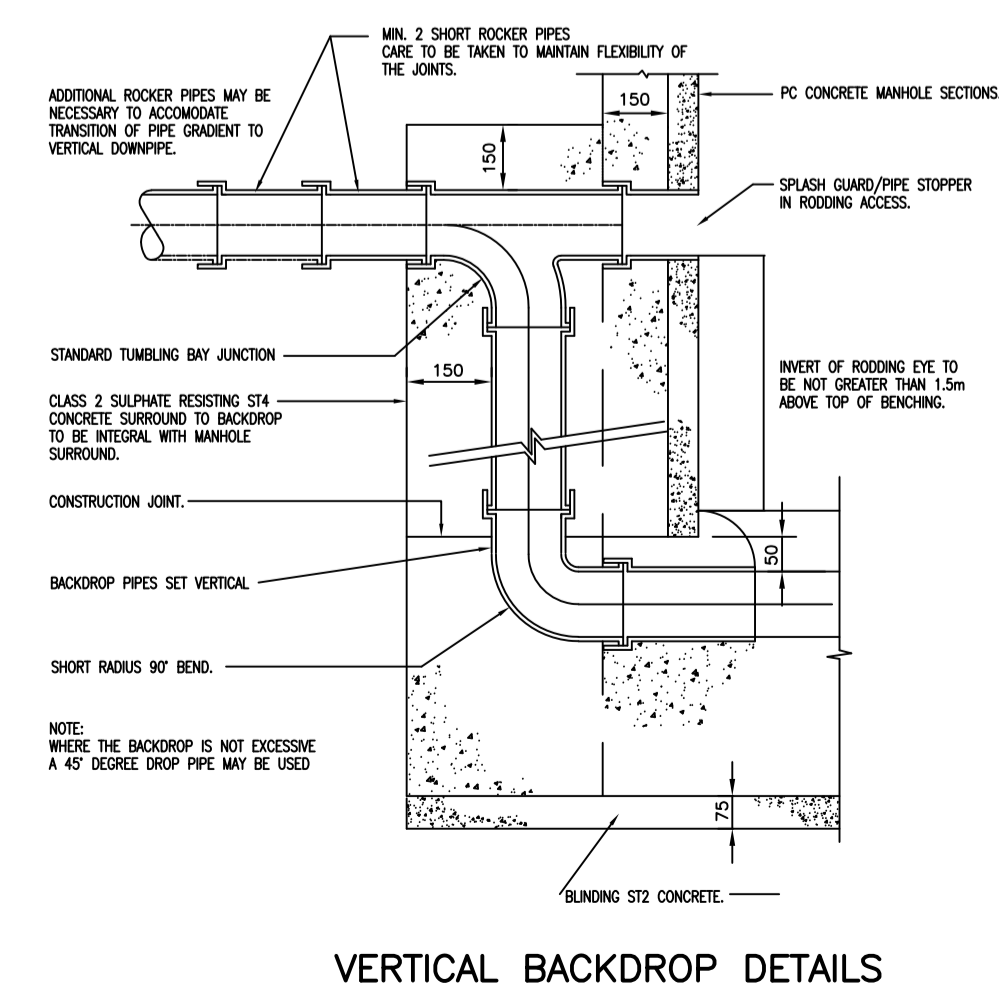
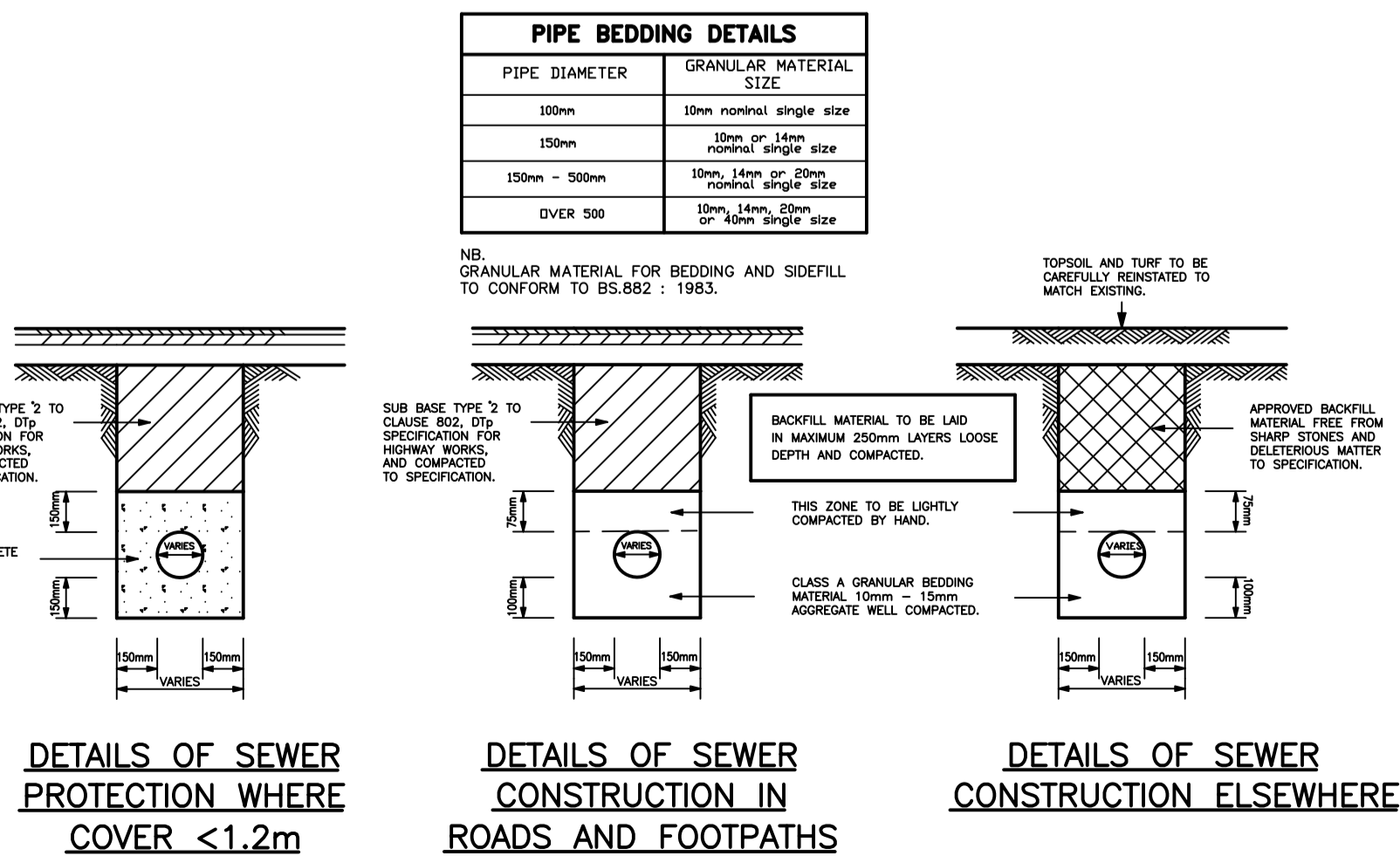
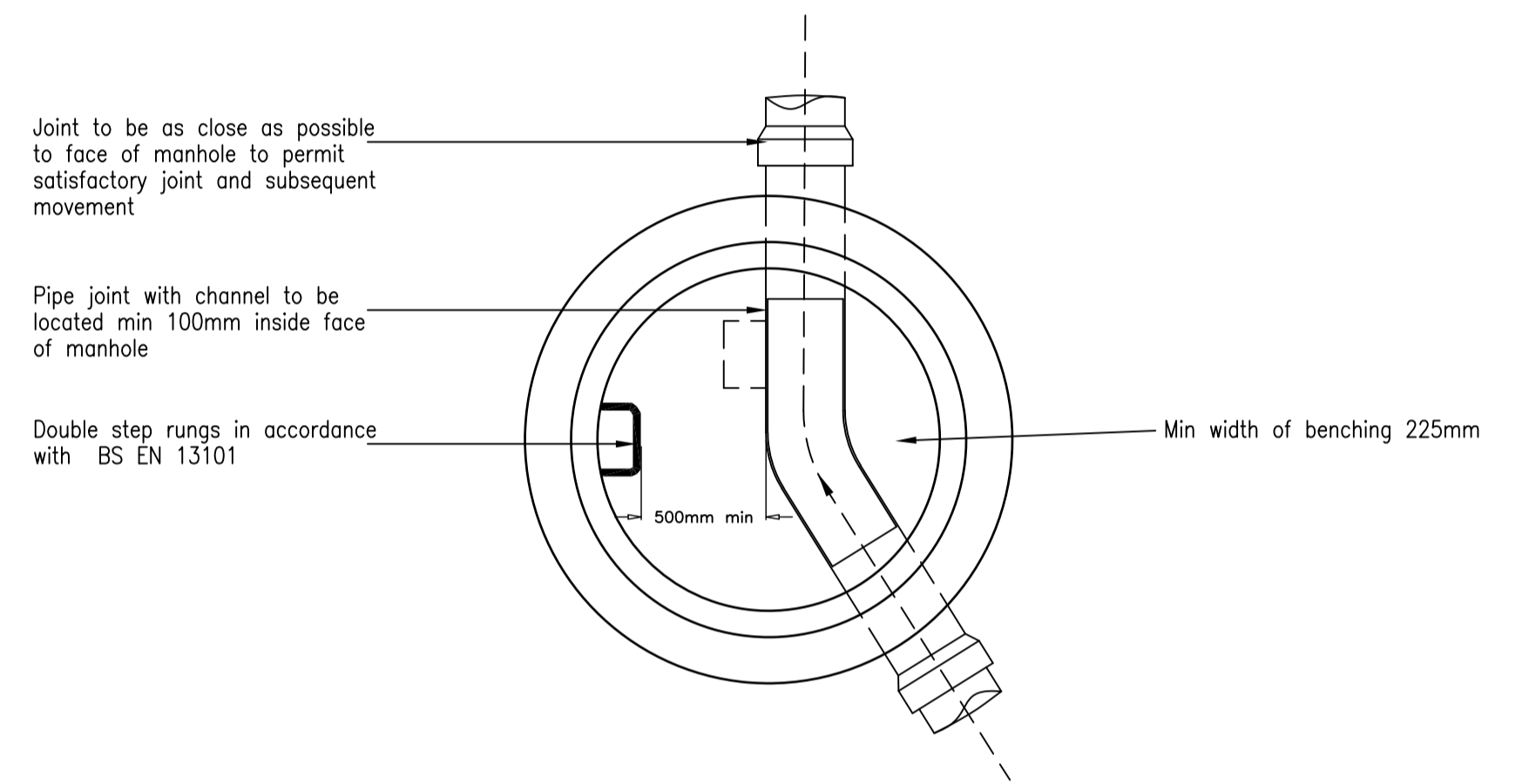
Where chambers are positioned on 90° corners, always using the main channel by fitting a 45° bend on inlet and outlet

Where a bend is used immediately outside the chamber, this may be used as the rocker pipe

**Arrangement of Pipe Junctions Within Type 3 Chambers**  
(N.T.S.)



**Type 2 - Max Depth 3.0m Cover-Soffit**  
(N.T.S.)



Rev	Drawn	Check	Issue	Date
-	-	-	-	-

Client: **Butler Wall Homes**

Project: **Llandewi Hall, Llandewi**

Title: **Drainage Construction Details**

**blackburn griffiths Ltd**  
Consulting Civil & Structural Engineers  
Unit 3, Evans Business Centre, Western Ind. Est. Coerphilly, CF83 1BE  
T: 02921 052 750 E: info@blackburngriffiths.co.uk

Drawn	Checked	Approved	Date	Scales @ A1	Project Ref.	Drawing No.	Rev.
HG	NG	NG	Nov '20	NTS	3172	231	-