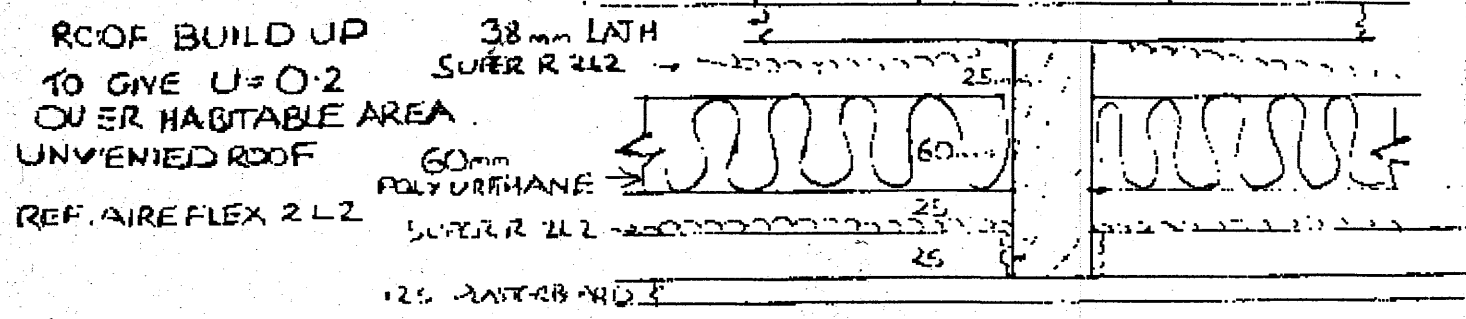
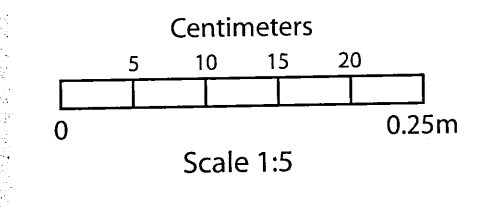
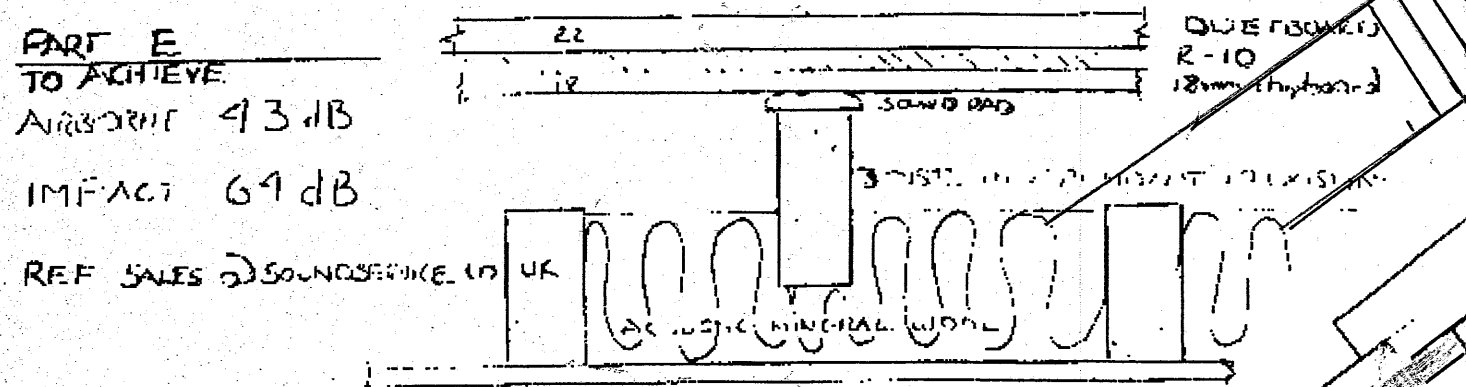


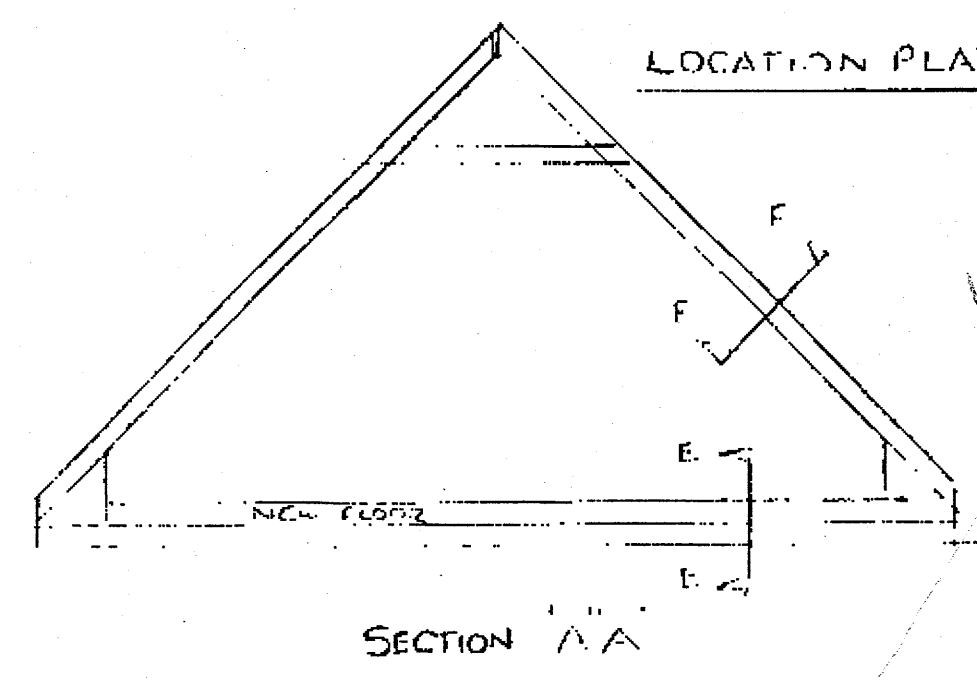
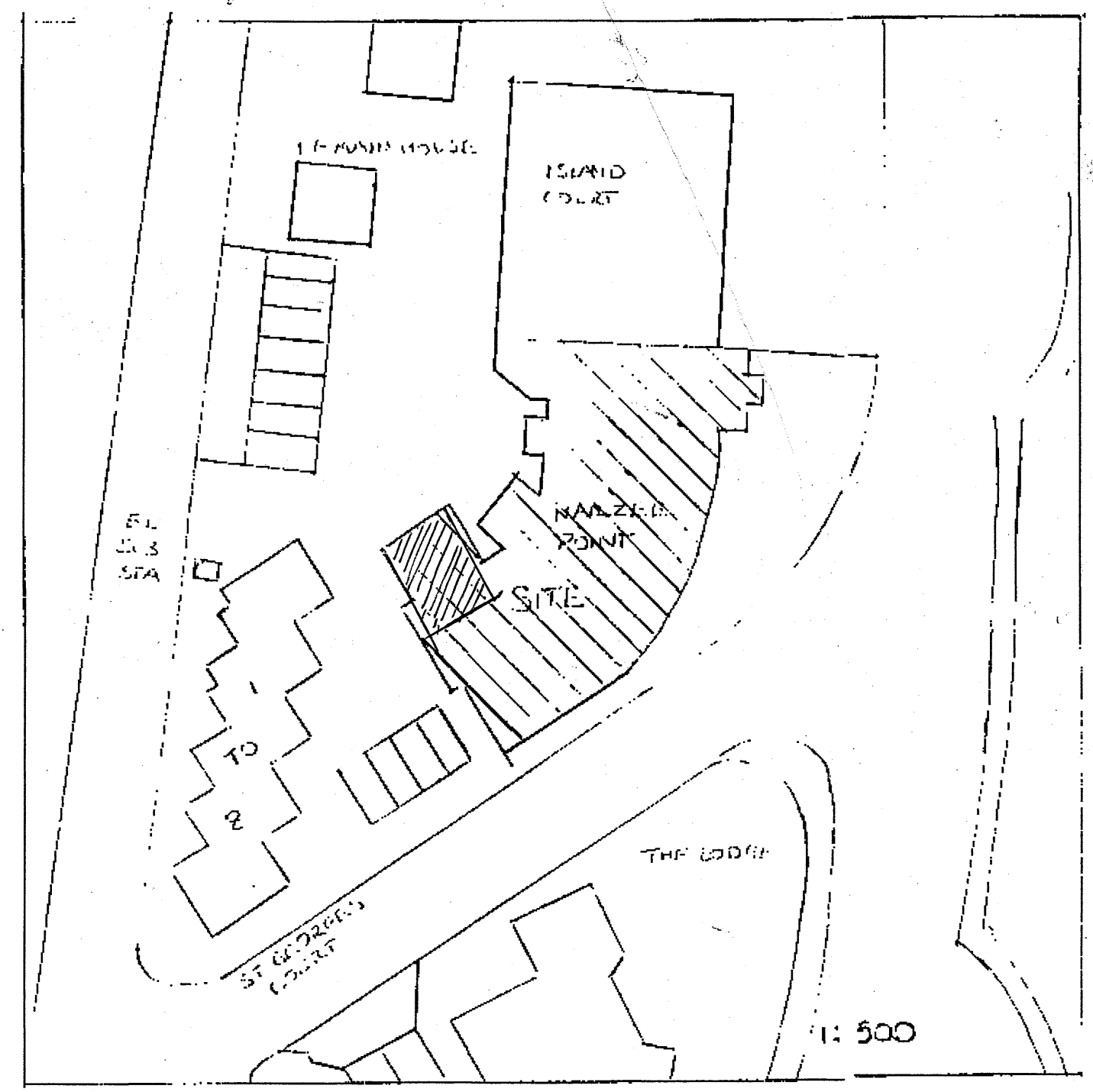
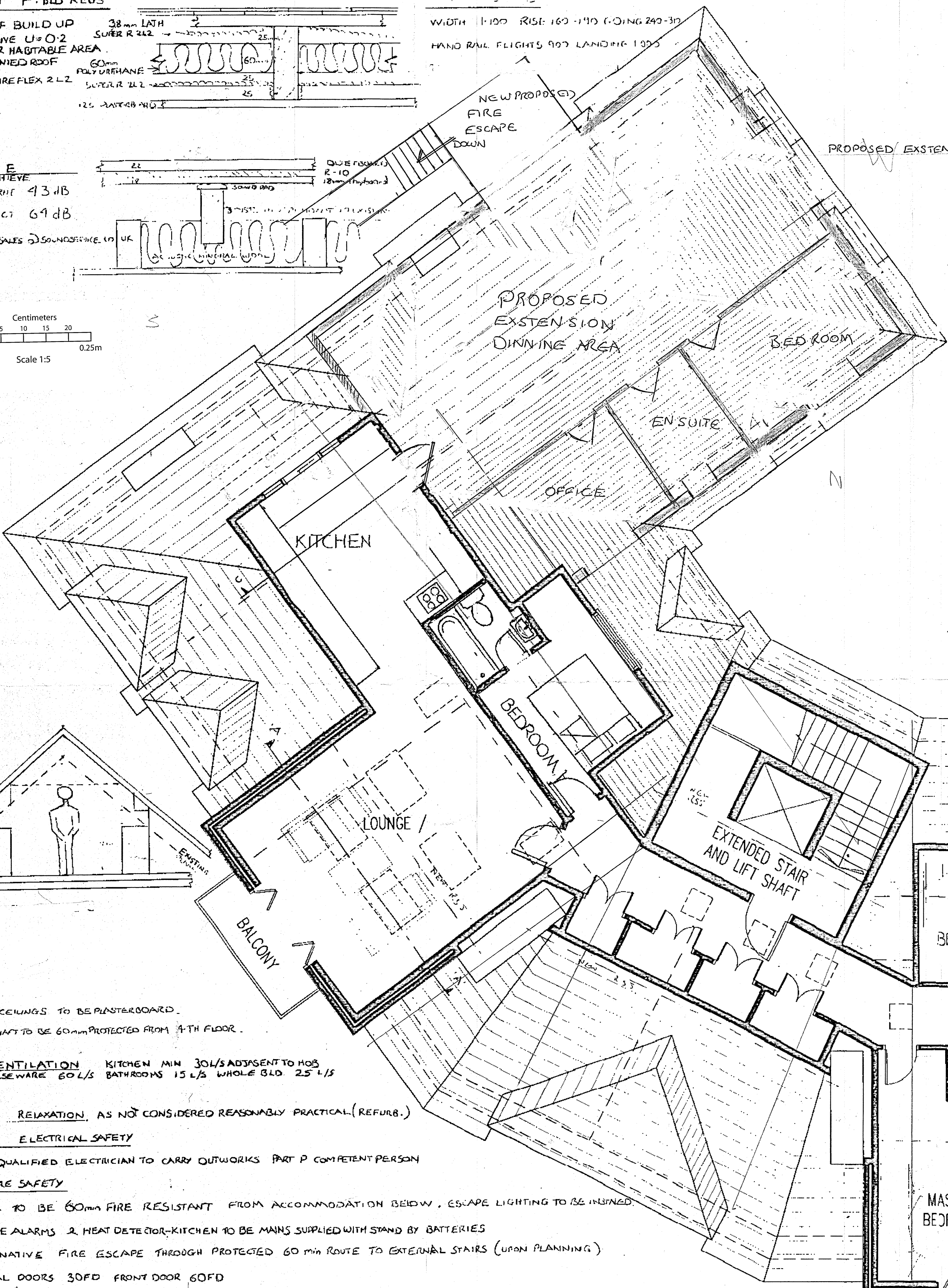
PART F. BLD REVS



1:5

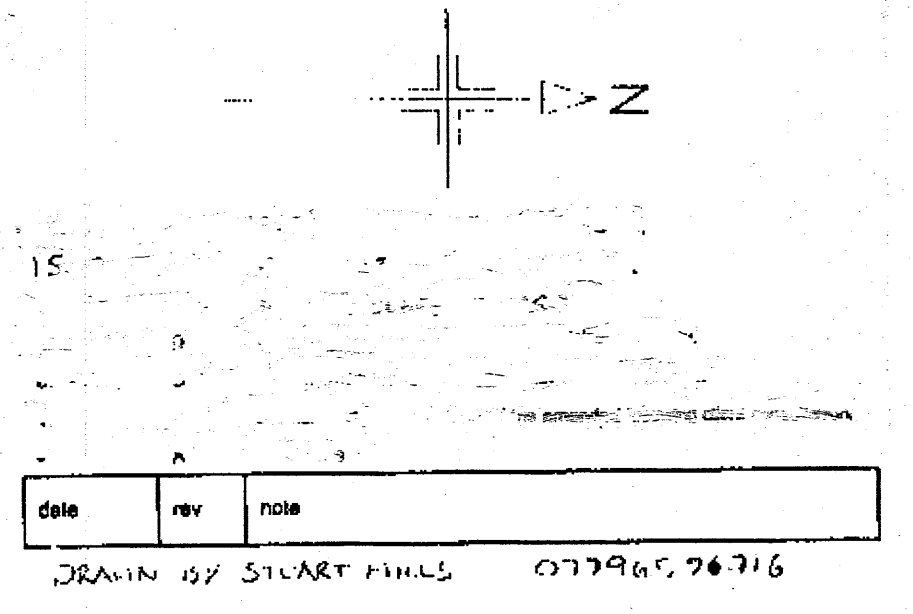


WIDTH 11.100 RISE 1.60-1.10 GOING 240-310  
HAND RAIL FLIGHTS 900 LANDING 1300



NOTES:- 24 JUN 2021

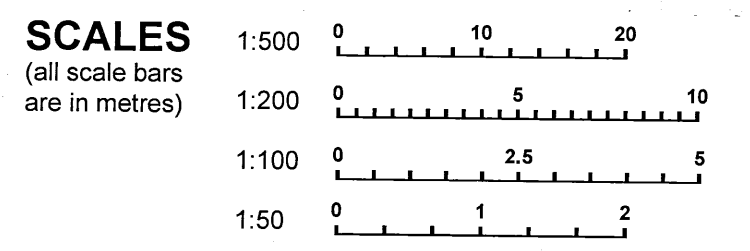
This drawing is for information purposes only and dimensions should not be scaled. All dimensions must be checked onsite, if exact dimensions are required.



PROJECT  
Nailzee Point Flats  
Marine Drive, West Looe, LOOE  
For MR AND MRS. S. MILLS.

DRAWING TITLE  
Proposed Loft Plan

DWG NUMBER PA21/Q5539 SCALE 1:50 DATE 21/6/21



PART B3.2  
WALLS CEILINGS TO BE PLASTERBOARD.  
STAIRS SHANT TO BE 60mm PROTECTED FROM 4TH FLOOR.

PART F. VENTILATION KITCHEN MIN 30L/S ADJASANT TO HOOD ELSEWHERE 60L/S BATHROOMS 15 L/S WHOLE BLD. 25 L/S

PART M1. RELAXATION AS NOT CONSIDERED REASONABLY PRACTICAL (REFURB.)

PART P. ELECTRICAL SAFETY  
I.E. QUALIFIED ELECTRICIAN TO CARRY OUTWORKS PART P COMPETENT PERSON

PART B FIRE SAFETY  
FLOOR TO BE 60mm FIRE RESISTANT FROM ACCOMMODATION BELOW. ESCAPE LIGHTING TO BE INSURED.  
SMOKE ALARMS & HEAT DETECTOR-KITCHEN TO BE MAINS SUPPLIED WITH STAND BY BATTERIES  
ALTERNATIVE FIRE ESCAPE THROUGH PROTECTED 60 min ROUTE TO EXTERNAL STAIRS (UPON PLANNING)  
INTERNAL DOORS 30FD FRONT DOOR 60FD

PART L1A  
CONDENSING GAS BOILER FOR HEATING.

COMPARTMENT WALL LINE