

18th June 2021

Planning Department
The Woolwich Centre
35 Wellington Street
London
SE18 6HQ

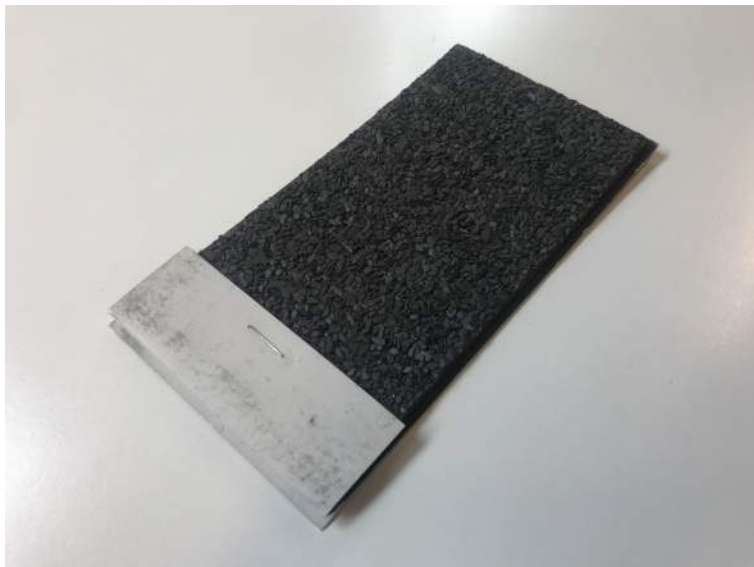
Dear Royal Borough of Greenwich Planning Department,

Planning Permission Ref 20/1556/F at The Moorings Social Club, Arnott Close, Thamesmead SE28 8BG – Condition 3.

I am writing to provide information requested in Condition 3 relating to new exterior materials proposed at The Moorings Social Club in planning application 20/1556/F. Where samples are not available we have provided images, finishes and RAL colours. Details are as follows:

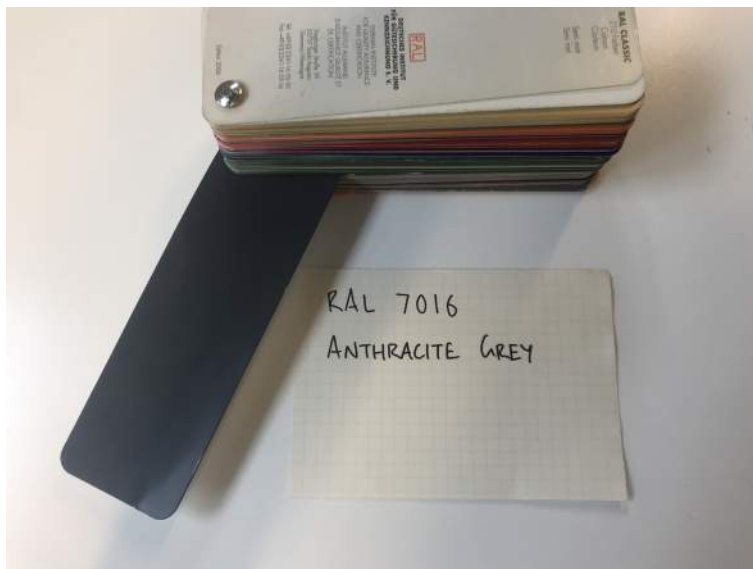
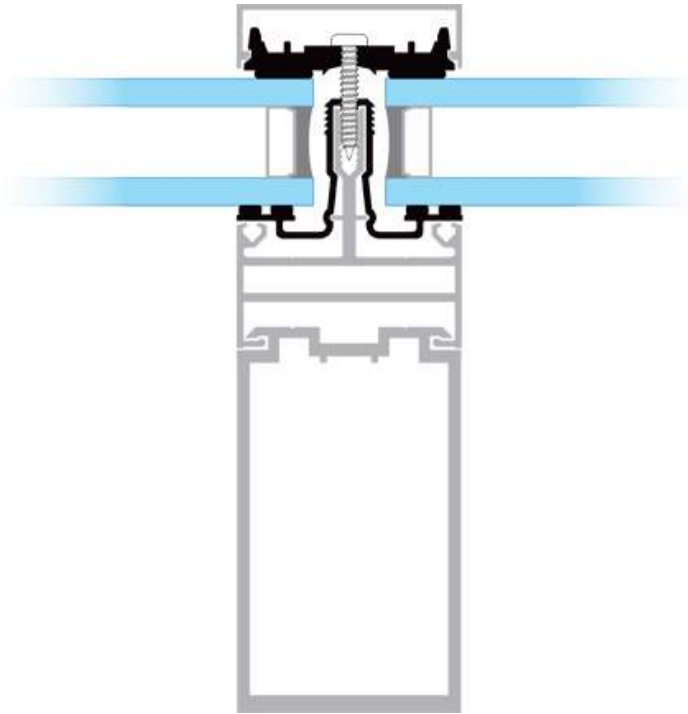
1 Roof Covering

Material: Bituminous roof covering
Product: IKO Goldseal
Finish: N/A
Colour: Black
Image: Photograph below



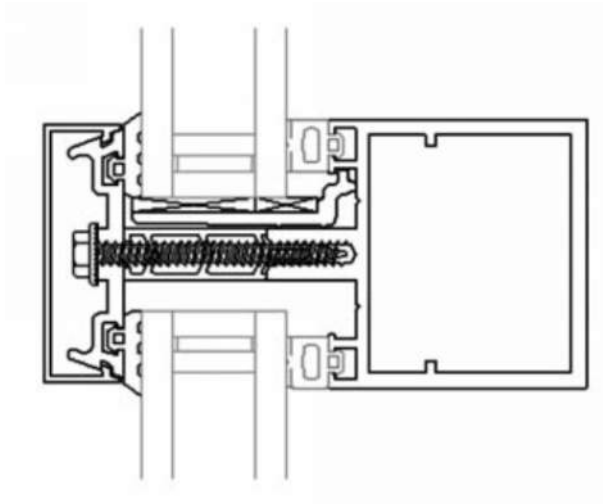
2 Patent Glazing

Material: Aluminium rooflight system
Product: Lonsdale ThermGard TG50
Finish: Polyester powder coated
Colour: RAL 7016 Anthracite Grey
Image: Section below
Photograph of RAL swatch below (applies to items 2, 3, 4, 5 and 6)



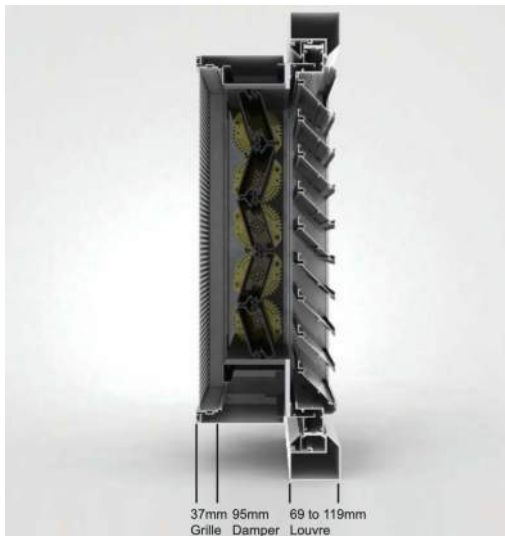
3 Curtain Walling

Material: Aluminium framed curtain walling system
Product: Senior Architectural Systems SF52 Curtain Walling
Finish: Polyester powder coated - Matt (30% Gloss)
Colour: RAL 7016 Anthracite Grey (as shown in item 2)
Image: Section below



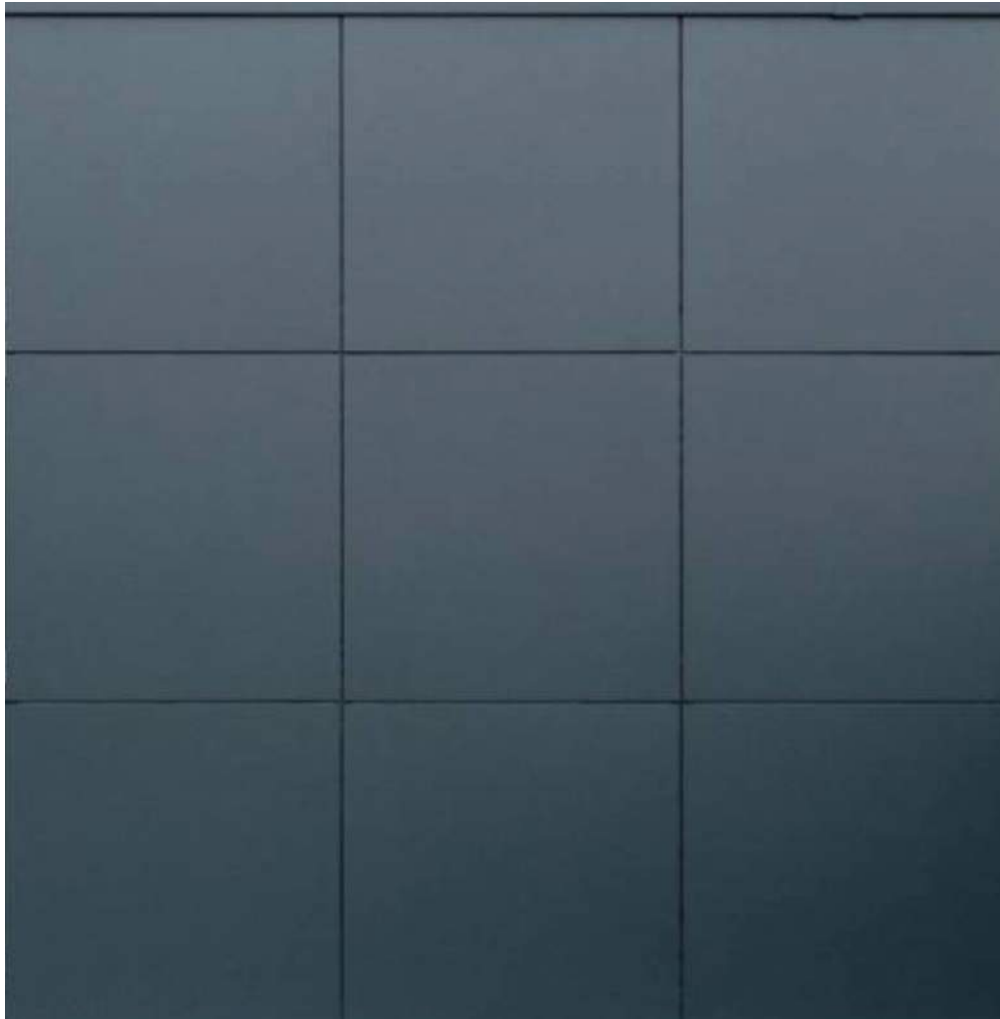
4 Ventilation Louvres

Material: Aluminium louvres
Product: Gilberts Mistrale 75
Finish: Polyester powder coated
Colour: RAL 7016 Anthracite Grey (as shown in item 2)
Image: Section below



5 Fascia Over Louvres (P220 Elevation A)

Material: Aluminium cladding panels
Product: Trespa Meteon
Finish: Polyester powder coated
Colour: RAL 7016 Anthracite Grey (as shown in item 2)
Image: Photograph below



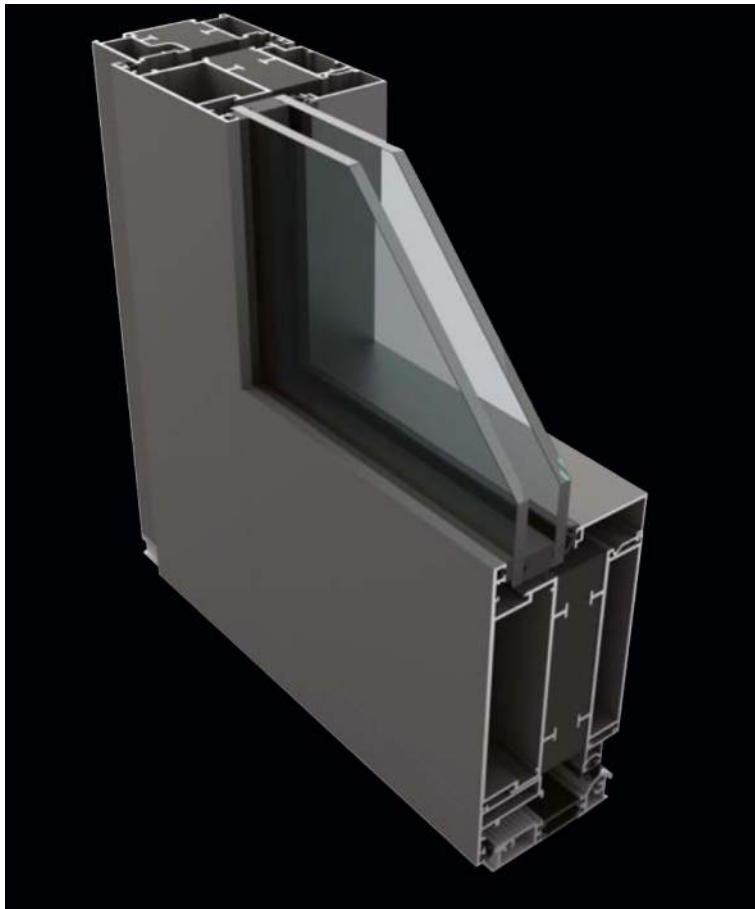
6 Windows in brickwork

Material: Aluminium framed windows
Product: Raynaers CS77 Window System
Finish: Polyester powder coated – Matt (30% Gloss)
Colour: RAL 7016 Anthracite Grey (as shown in item 2)
Image: Photograph below



6 Doors in curtain walling

Material: Aluminium framed doors
Product: Senior Architectural Systems PRe Commercial door
Finish: Polyester powder coated
Colour: RAL 7016 Anthracite Grey (as shown in item 2)
Image: Image below



Yours sincerely

Joseph Paget
Architect