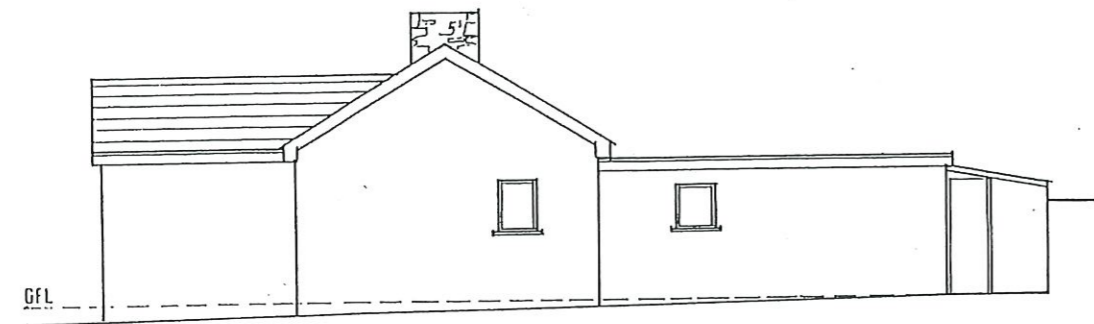
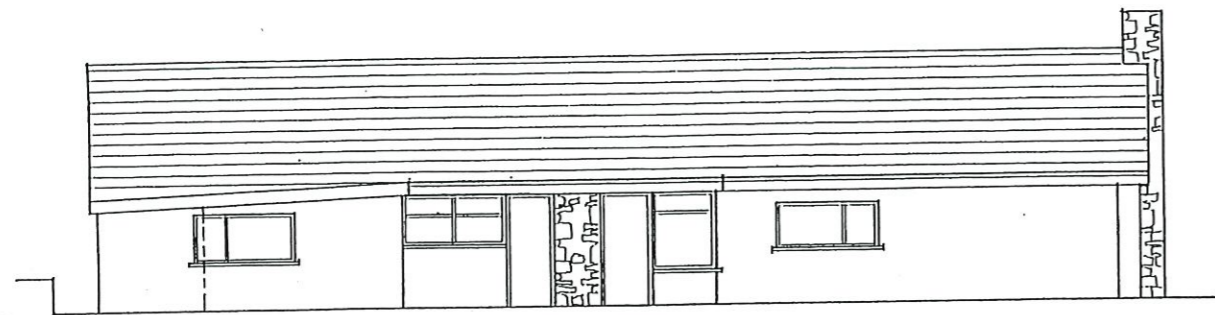
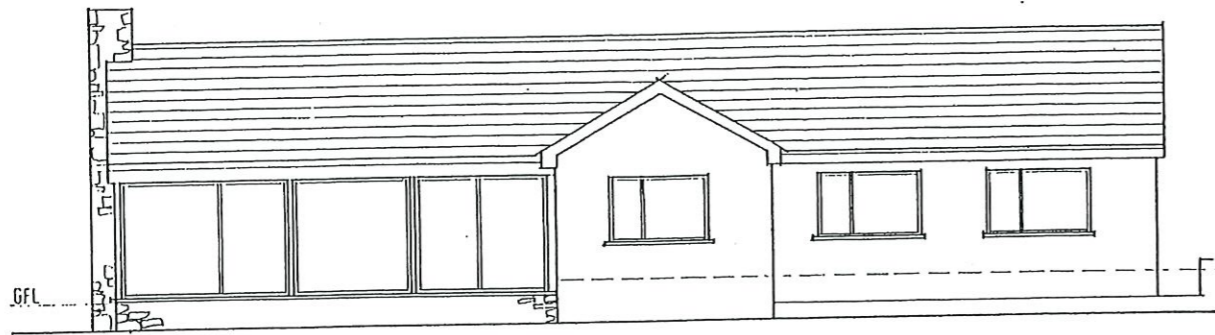
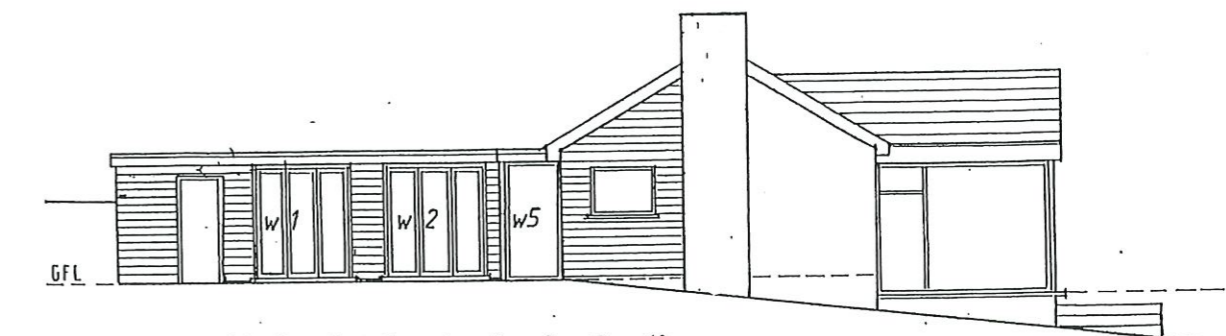
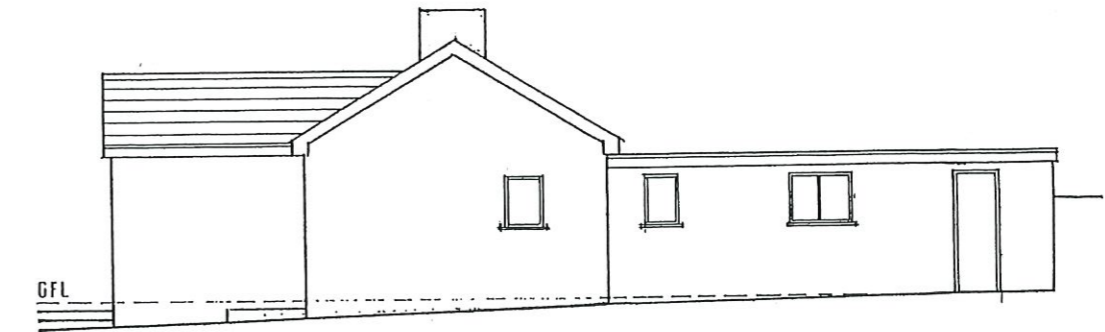
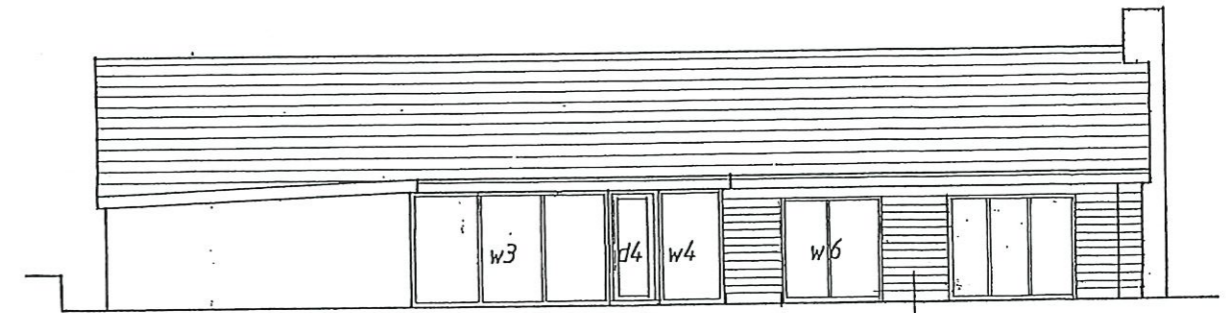


EXISTING



PROPOSED



EAST

WEST

NORTH

SOUTH

Marley Eternit Operal cladding OP12 lavender blue

0 1 2 3 4 5 6 7 8 9 10m.

CLINTON · WEST BAY · MAENPORTH ROAD · FALMOUTH

Scale  
A2 at 1:100  
North

Drawing Number  
16 · 32 · 4  
Revision

**Bartram Deakin Associates**  
CHARTERED ARCHITECTS  
Lisandra House, Fore Street, East Looe, Cornwall PL13 1AD  
Telephone and Facsimile : 01503 262571  
e-mail : bdarch@btconnect.com