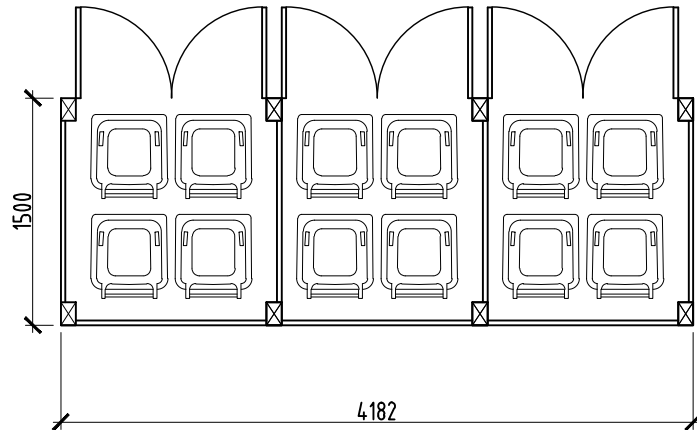
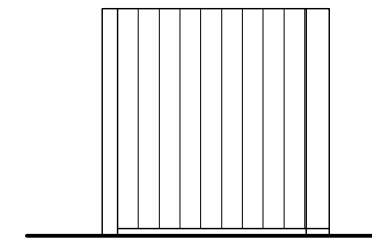


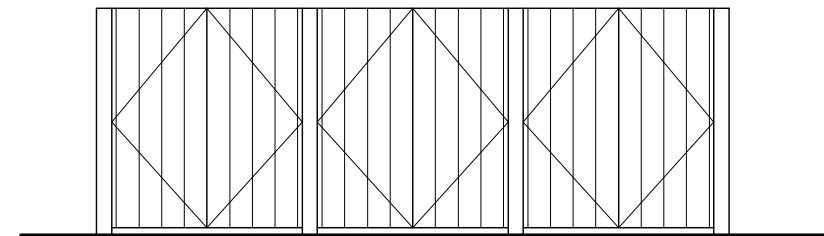
TEMP BIN STORE PLAN 1:50  
8no bins  
(construction same as main store)



BIN STORE PLAN 1:50  
16no bins



SIDE ELEVATION  
1:50



FRONT ELEVATION  
1:50

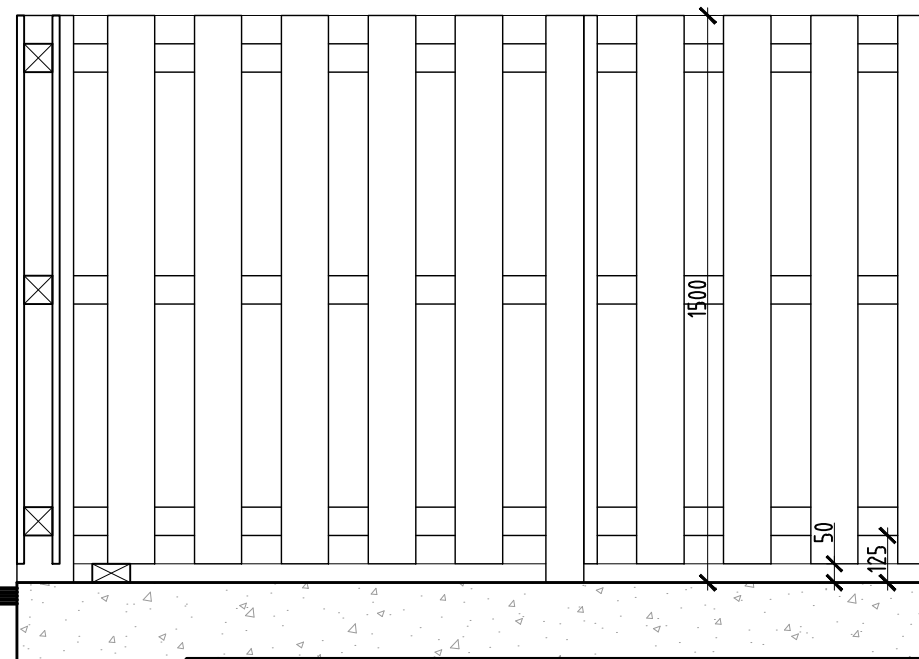
- C Drawing updated following planners advice. 13.05.21
- B Updated after meeting & advice, from planner, highways & waste teams. 03.03.21
- A Drawing updated following highways comments / swepth path dwg. 04.01.20

| REV    | DESCRIPTION | DATE            | INIT | CHKD |
|--------|-------------|-----------------|------|------|
| STATUS |             | FOR INFORMATION |      |      |

1100 litre Eurobin.

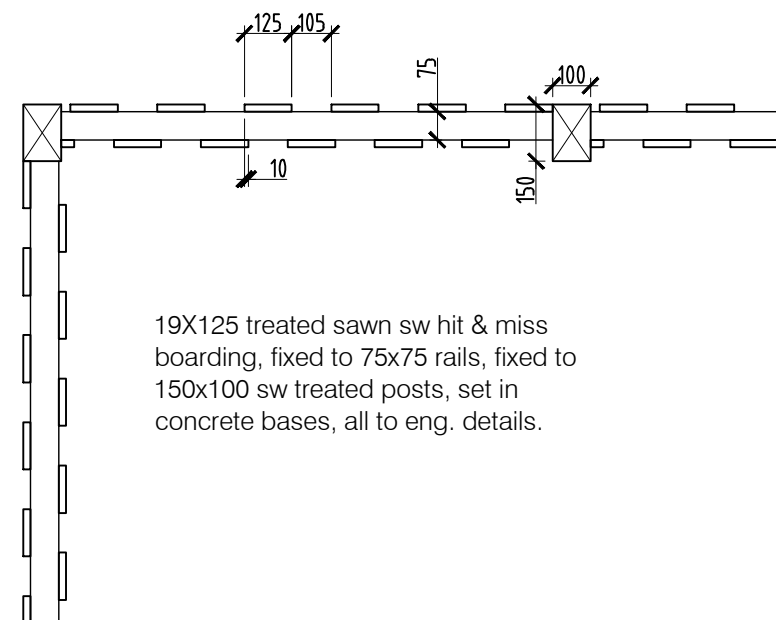
19X125 treated sawn sw hit & miss boarding, fixed to 75x75 rails, fixed to 150x100 sw treated posts, set in concrete bases, all to eng. details.

150x50mm treated timber plate bolted to concrete base to prevent bins from bumping into fence.



In situ concrete floor slab, with light brush finish, laid to fall to gully, all to eng. details.

Secton 1:20



19X125 treated sawn sw hit & miss boarding, fixed to 75x75 rails, fixed to 150x100 sw treated posts, set in concrete bases, all to eng. details.

Part Plan 1:20

Client  
**Mr J Kennard**

Project  
**83 Colyers Lane, Erith,  
Kent. DA8 3NG**

Title  
**Proposed Refuse Store**

| Scale       | Date        | Drawn    | Checked |
|-------------|-------------|----------|---------|
| As Noted@A3 | 13.07.20    | N/A      | N/A     |
| Project No: | Drawing No. | Revision |         |
| 2019-111    | 007         | C        |         |