

The Aldingham

Ground Floor

Kitchen/breakfast area (max.)

4.33m x 3.02m 14' 2" x 9' 9"

Dining room

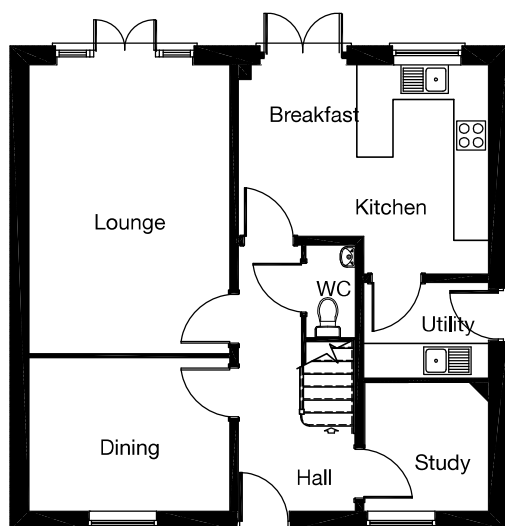
3.47m x 2.65m 11' 4" x 8' 8"

Lounge

3.47m x 4.99m 11' 4" x 16' 4"

Study

2.16m x 2.23m 7' 1" x 7' 4"



First Floor

Bedroom 1

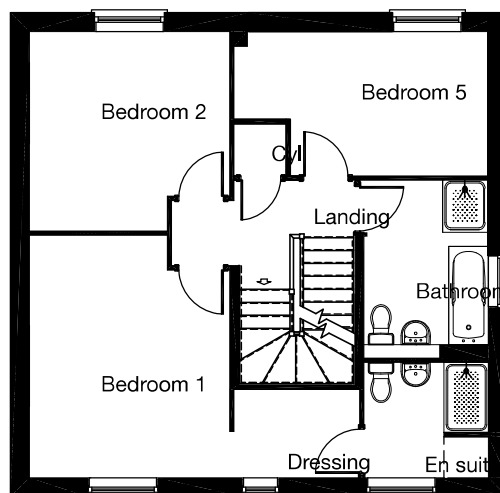
3.47m x 4.19m 11' 4" x 13' 9"

Bedroom 2

3.45m x 3.47m 11' 4" x 11' 4"

Bedroom 5 (max.)

2.50m x 4.40m 8' 2" x 14' 5"



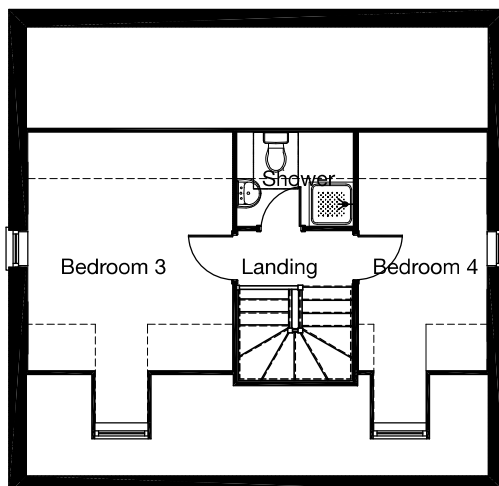
Second Floor

Bedroom 3 (min.)

4.13m x 3.54m 13' 6" x 11' 7"

Bedroom 4 (min.)

4.13m x 2.23m 13' 6" x 7' 4"



Please note: Some plots may or may not have windows where marked (*). Please liaise with your Sales Executive for further details.

The floor plans depict a typical layout of this house type. For exact plot specification, details of external and internal finishes, dimensions and floor plan differences consult your Sales Executive. All dimensions are + or - 50mm and floor plans are not shown to scale. 17110/APRIL 2013.