

Sussex

Published 1932 - 1933

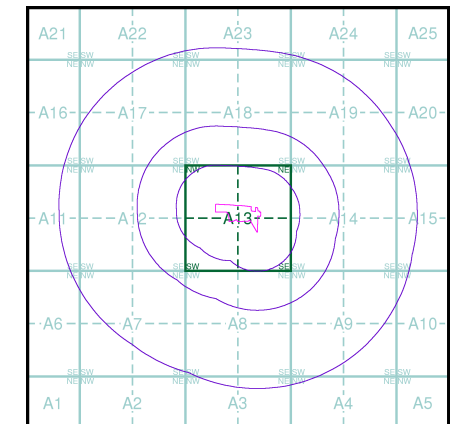
Source map scale - 1:10,560

The historical maps shown were reproduced from maps predominantly held at the scale adopted for England, Wales and Scotland in the 1840's. In 1854 the 1:2,500 scale was adopted for mapping urban areas; these maps were used to update the 1:10,560 maps. The published date given therefore is often some years later than the surveyed date. Before 1938, all OS maps were based on the Cassini Projection, with independent surveys of a single county or group of counties, giving rise to significant inaccuracies in outlying areas. In the late 1940's, a Provisional Edition was produced, which updated the 1:10,560 mapping from a number of sources. The maps appear unfinished - with all military camps and other strategic sites removed. These maps were initially overprinted with the National Grid. In 1970, the first 1:10,000 maps were produced using the Transverse Mercator Projection. The revision process continued until recently, with new editions appearing every 10 years or so for urban areas.

Map Name(s) and Date(s)

065NE	1933
1:10,560	
065SE	1932
1:10,560	

Historical Map - Slice A

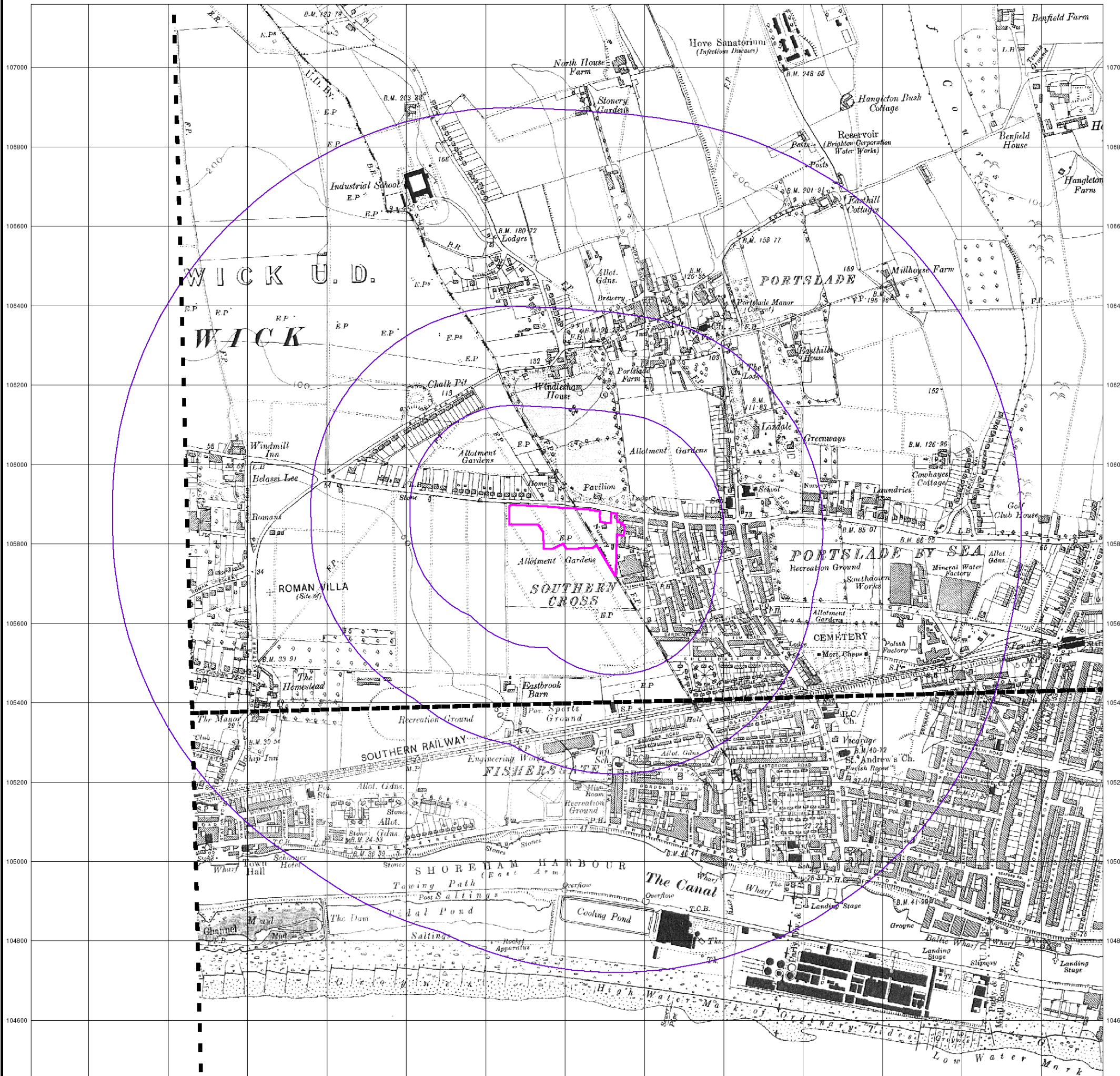


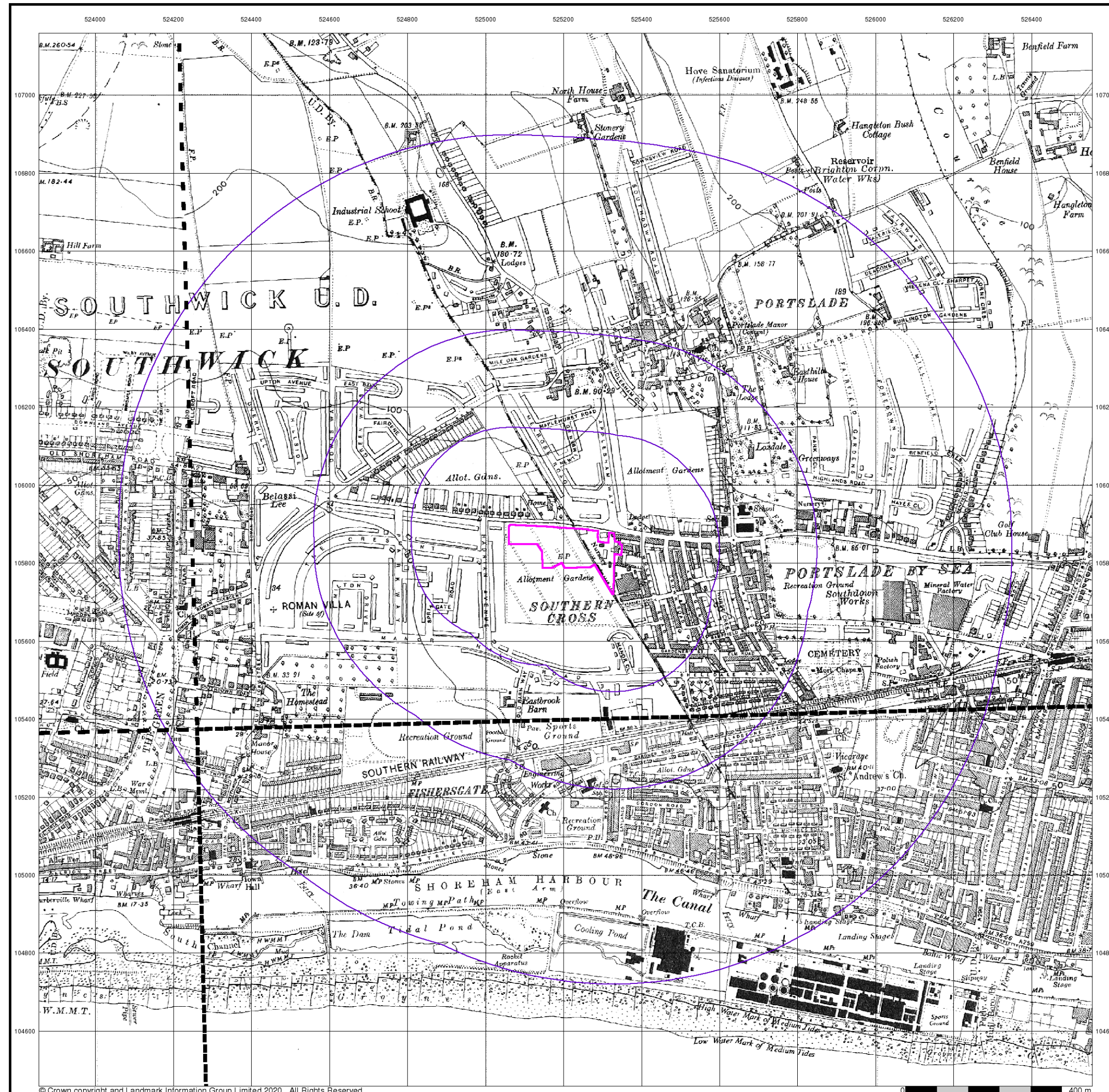
Order Details

Order Number: 250711794_1_1
 Customer Ref: 66163.527
 National Grid Reference: 525210, 105830
 Slice: A
 Site Area (Ha): 2.36
 Search Buffer (m): 1000

Site Details

Mayberry Development, Old Shoreham Road, Portslade, Brighton, BN41 1SP





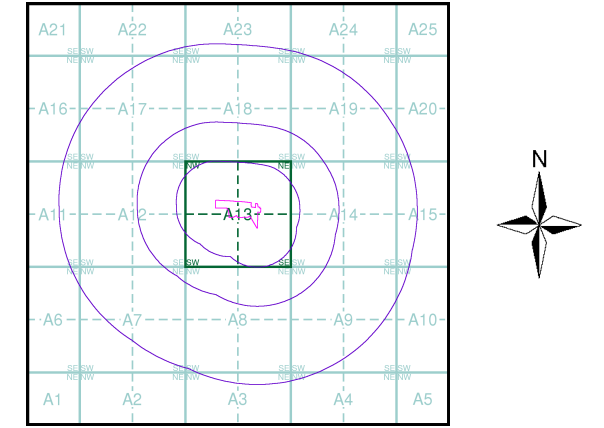
Sussex
Published 1938 - 1948
Source map scale - 1:10,560

The historical maps shown were reproduced from maps predominantly held at the scale adopted for England, Wales and Scotland in the 1840's. In 1854 the 1:2,500 scale was adopted for mapping urban areas; these maps were used to update the 1:10,560 maps. The published date given therefore is often some years later than the surveyed date. Before 1938, all OS maps were based on the Cassini Projection, with independent surveys of a single county or group of counties, giving rise to significant inaccuracies in outlying areas. In the late 1940's, a Provisional Edition was produced, which updated the 1:10,560 mapping from a number of sources. The maps appear unfinished - with all military camps and other strategic sites removed. These maps were initially overprinted with the National Grid. In 1970, the first 1:10,000 maps were produced using the Transverse Mercator Projection. The revision process continued until recently, with new editions appearing every 10 years or so for urban areas.

Map Name(s) and Date(s)

065NW 1947 1:10,560	065NE 1938 1:10,560
065SW 1948 1:10,560	065SE 1940 1:10,560

Historical Map - Slice A



Order Details
Order Number: 250711794_1_1
Customer Ref: 66163.527
National Grid Reference: 525210, 105830
Slice: A
Site Area (Ha): 2.36
Search Buffer (m): 1000

Site Details
Mayberry Development, Old Shoreham Road, Portslade,
Brighton, BN41 1SP

524000 524200 524400 524600 524800 525000 525200 525400 525600 525800 526000 526200 526400



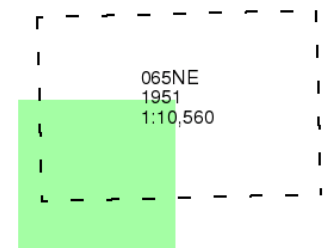
Sussex

Published 1951

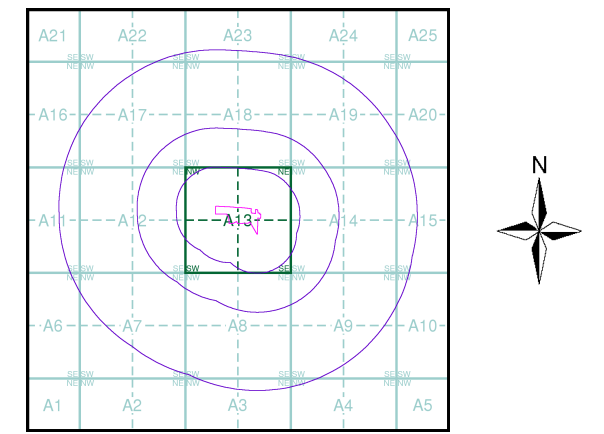
Source map scale - 1:10,560

The historical maps shown were reproduced from maps predominantly held at the scale adopted for England, Wales and Scotland in the 1840's. In 1854 the 1:2,500 scale was adopted for mapping urban areas; these maps were used to update the 1:10,560 maps. The published date given therefore is often some years later than the surveyed date. Before 1938, all OS maps were based on the Cassini Projection, with independent surveys of a single county or group of counties, giving rise to significant inaccuracies in outlying areas. In the late 1940's, a Provisional Edition was produced, which updated the 1:10,560 mapping from a number of sources. The maps appear unfinished - with all military camps and other strategic sites removed. These maps were initially overprinted with the National Grid. In 1970, the first 1:10,000 maps were produced using the Transverse Mercator Projection. The revision process continued until recently, with new editions appearing every 10 years or so for urban areas.

Map Name(s) and Date(s)



Historical Map - Slice A



Order Details

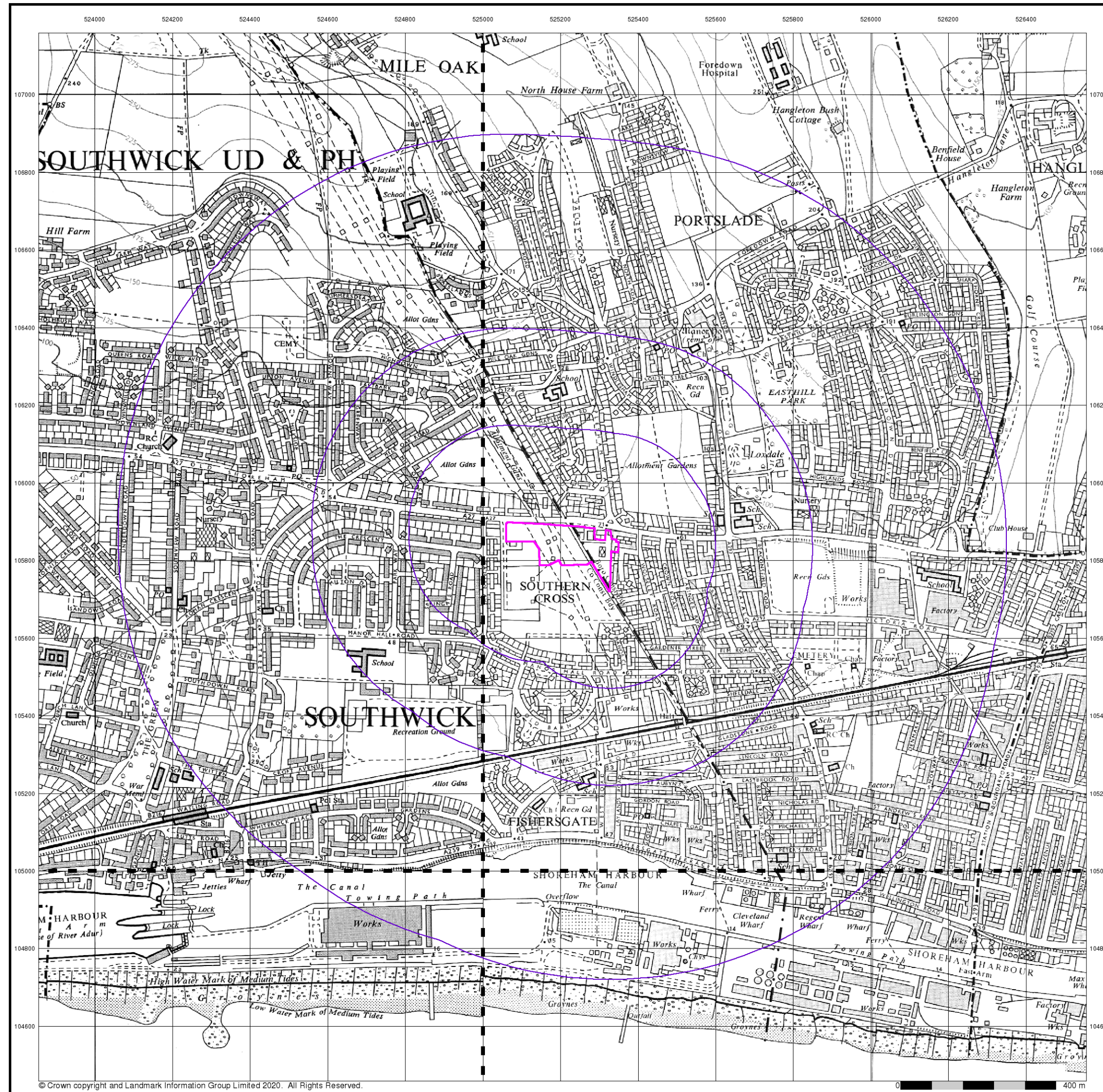
Order Number: 250711794_1_1
 Customer Ref: 66163.527
 National Grid Reference: 525210, 105830
 Slice: A
 Site Area (Ha): 2.36
 Search Buffer (m): 1000

Site Details

Mayberry Development, Old Shoreham Road, Portslade, Brighton, BN41 1SP



Tel: 0844 844 9952
 Fax: 0844 844 9951
 Web: www.envirocheck.co.uk



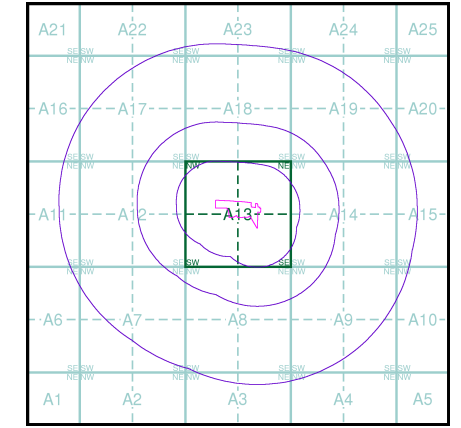
Ordnance Survey Plan
Published 1963
Source map scale - 1:10,000

The historical maps shown were reproduced from maps predominantly held at the scale adopted for England, Wales and Scotland in the 1840's. In 1854 the 1:2,500 scale was adopted for mapping urban areas; these maps were used to update the 1:10,560 maps. The published date given therefore is often some years later than the surveyed date. Before 1938, all OS maps were based on the Cassini Projection, with independent surveys of a single county or group of counties, giving rise to significant inaccuracies in outlying areas. In the late 1940's, a Provisional Edition was produced, which updated the 1:10,560 mapping from a number of sources. The maps appear unfinished - with all military camps and other strategic sites removed. These maps were initially overprinted with the National Grid. In 1970, the first 1:10,000 maps were produced using the Transverse Mercator Projection. The revision process continued until recently, with new editions appearing every 10 years or so for urban areas.

Map Name(s) and Date(s)

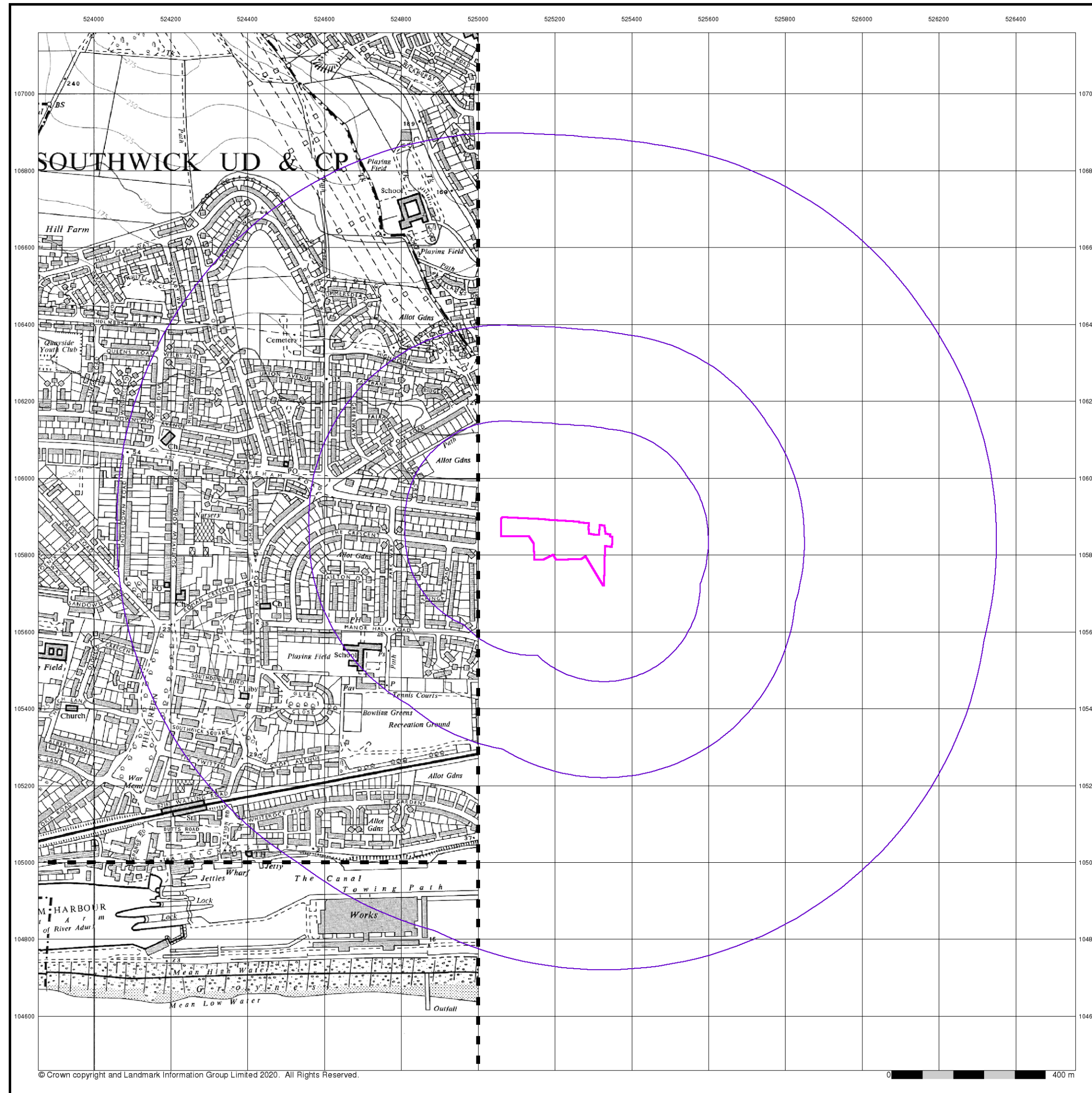
TQ20NW	TQ20NE
1963	1963
1:10,560	1:10,560
TQ20SW	TQ20SE
1963	1963
1:10,560	1:10,560

Historical Map - Slice A



Order Details
 Order Number: 250711794_1_1
 Customer Ref: 66163.527
 National Grid Reference: 525210, 105830
 Slice: A
 Site Area (Ha): 2.36
 Search Buffer (m): 1000

Site Details
 Mayberry Development, Old Shoreham Road, Portslade,
 Brighton, BN41 1SP



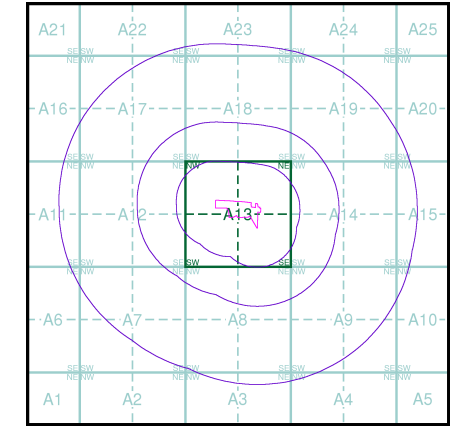
Ordnance Survey Plan
Published 1968
Source map scale - 1:10,000

The historical maps shown were reproduced from maps predominantly held at the scale adopted for England, Wales and Scotland in the 1840's. In 1854 the 1:2,500 scale was adopted for mapping urban areas; these maps were used to update the 1:10,560 maps. The published date given therefore is often some years later than the surveyed date. Before 1938, all OS maps were based on the Cassini Projection, with independent surveys of a single county or group of counties, giving rise to significant inaccuracies in outlying areas. In the late 1940's, a Provisional Edition was produced, which updated the 1:10,560 mapping from a number of sources. The maps appear unfinished - with all military camps and other strategic sites removed. These maps were initially overprinted with the National Grid. In 1970, the first 1:10,000 maps were produced using the Transverse Mercator Projection. The revision process continued until recently, with new editions appearing every 10 years or so for urban areas.

Map Name(s) and Date(s)

TQ20NW	1968	1:10,560
TQ20SW	1968	1:10,560

Historical Map - Slice A



Order Details

Order Number: 250711794_1_1
 Customer Ref: 66163.527
 National Grid Reference: 525210, 105830
 Slice: A
 Site Area (Ha): 2.36
 Search Buffer (m): 1000

Site Details

Mayberry Development, Old Shoreham Road, Portslade, Brighton, BN41 1SP



Tel: 0844 844 9952
 Fax: 0844 844 9951
 Web: www.envirocheck.co.uk